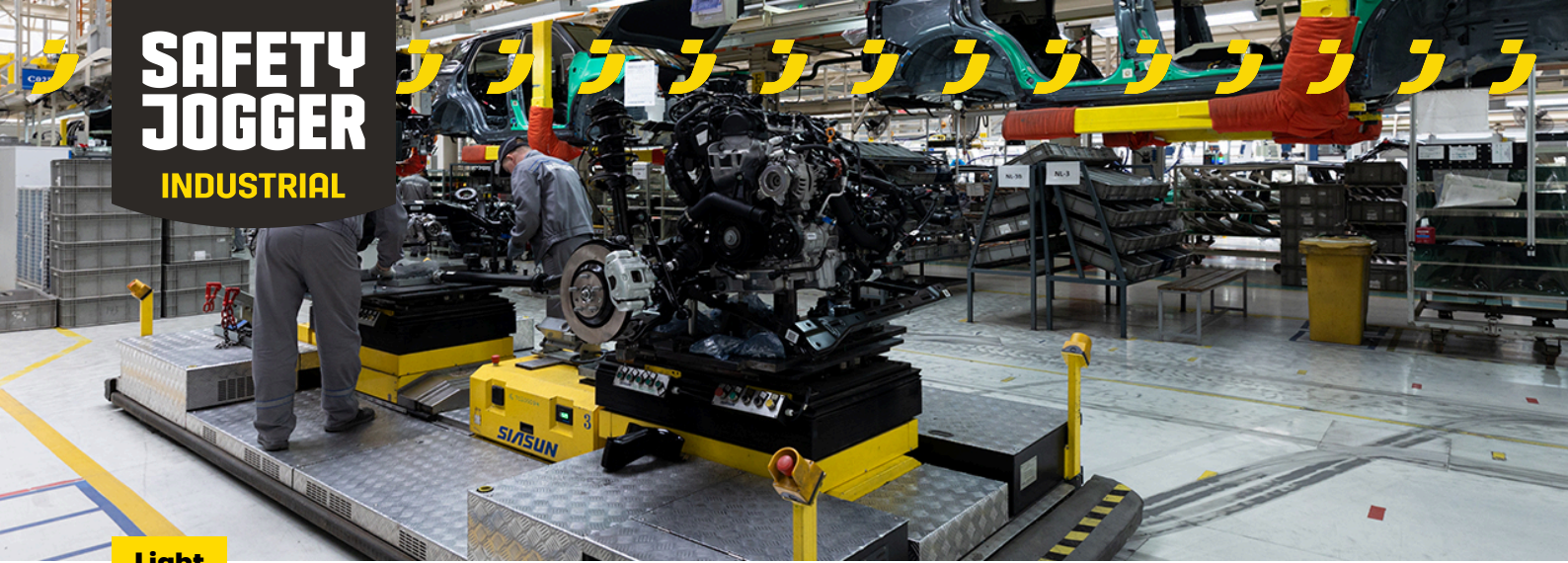


SAFETY JOGGER

INDUSTRIAL



Light

LOBI S1P LOW TLS S1 PS

LOBIS1PLT

Wide-fitting trainer like safety shoe

Upper	Synthetic
Lining	Mesh
Footbed	SJ foam footbed
Midsole	Anti-puncture Textile
Outsole	Phylon/Rubber
Toecap	Composite
Safety standard	S1 PS / ESD, FO, HRO, SR
Size range	EU 35-48 / UK 3.0-13.0 / US 3.0-13.5 JPN 21.5-31.5 / KOR 230-315
Sample weight	0.499 kg
Norms	ASTM F2413:2018 EN ISO 20345:2022



ORA



BLK



GRN



Composite toecap

Metalfree and lightweight, no thermal or electrical conductivity



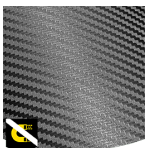
Heel energy absorption

Heel energy absorption reduces the impact of jumps or running on the body of the wearer.



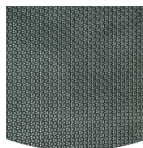
Slip resistance (SR)

Replaces the previously used term of SRA+SRB=SRC. SR means the slip test has been executed on tiles contaminated with soap and with oil.



Metal free

Metal free safety shoes are in general lighter than regular safety shoes. They are also very beneficial for professionals who have to pass through metal detectors several times a day.



Rubber outsole

Rubber outsoles provide versatile functions that make them suitable for many areas of application: excellent cut resistance, heat and cold resistance, high flexibility at cold temperatures, resistance against oil, fuel and many chemicals.

Industries:

Assembly, Automotive, Industry, Logistics

Environments:

Dry environment, Uneven surfaces

Maintenance instructions:

To extend the life of your shoes, we recommend to clean them regularly and to protect them with adequate products. Do not dry your shoes on a radiator, nor nearby a heat source.

	Description	Measure unit	Result	EN ISO 20345
Upper	Synthetic			
	Upper: permeability to water vapor	mg/cm ² /h	1.2	≥ 0.8
	Upper: water vapor coefficient	mg/cm ²	21	≥ 15
Lining	Mesh			
	Lining: permeability to water vapor	mg/cm ² /h	34.59	≥ 2
	Lining: water vapor coefficient	mg/cm ²	277	≥ 20
Footbed	SJ foam footbed			
	Footbed: abrasion resistance (dry/wet) (cycles)	cycles	Dry 25600 cycles/Wet 12800 cycles	25600/12800
Outsole	Phylon/Rubber			
	Outsole abrasion resistance (volume loss)	mm ³	119.4mm ³ (Density:1.3)	≤ 150
	Outsole slip resistance SRA: heel	friction	0.32	≥ 0.28
	Outsole slip resistance SRA: flat	friction	0.40	≥ 0.32
	Outsole slip resistance SRB: heel	friction	0.18	≥ 0.13
	Outsole slip resistance SRB: flat	friction	0.21	≥ 0.18
	Antistatic value	MegaOhm	215	0.1 - 1000
	ESD value	MegaOhm	75	0.1 - 100
	Heel energy absorption	J	25	≥ 20
Toecap	Composite			
	Impact resistance toecap (clearance after impact 100J)	mm	NA	N/A
	Compression resistance toecap (clearance after compression 10kN)	mm	NA	N/A
	Impact resistance toecap (clearance after impact 200J)	mm	16	≥ 14
	Compression resistance toecap (clearance after compression 15kN)	mm	17	≥ 14

Sample size: 42

Our shoes are constantly evolving, the technical data above may change. All product names and brand Safety Jogger, are registered and may not be used or reproduced in any format, without written consent from us.