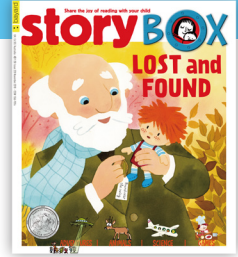


LOST and FOUND



STORYTIME

brand new (adj) completely new 全新 | 全新

cosy (adj) comfortable and nice 溫馨 | 溫馨

disappointed (adj) unhappy because things are not as good as you have hoped 感到失望 | 感到失望

fetch (v) to go and get something 取來 | 取來

flutter (v) to move quickly up and down, or from side to side 飄動 | 飄動

groan (v) to speak something unhappily 不高興地說 | 不高興地說

immediately (adj) in no time 立刻 | 立刻

knot (v) a join made by tying pieces of string together 結 | 結

manage (v) to succeed in doing something 勝任 | 勝任

mist (v) to cover something with tiny drops of water

被水汽覆蓋 | 被水汽覆蓋

musical instrument (n) a tool for playing music, such as a piano or a violin
樂器 | 樂器

mutter (v) to speak in a low voice 嘀咕 | 嘀咕

pavement (n) a path at the side of a road for people to walk on
人行道 | 人行道

recognise (v) to know who someone is 認出 | 認出

stir (v) to move something around in a container 攪拌 | 攪拌

stove (n) a tool that gives out heat for cooking 爐子 | 爐子

tangle (v) to make something into an untidy mass 使亂作一團 | 使亂作一團

tight (adv) firmly or closely 緊緊地 | 緊緊地

undo (v) to untie something 解開 | 解開

waft (v) to move gently through the air 飄盪 | 飄盪

whisper (v) to speak softly 輕聲說 | 輕聲說

windowsill (n) a shelf below a window 窗沿 | 窗沿

wrist (n) the body part which is between the hand and the lower arm
手腕 | 手腕

WONDER WITH WHIZKID

engine (n) the part of a car or an aeroplane that produces movement 引擎 | 引擎

powerful (adj) strong 強而有力 | 強而有力

runway (n) a long strip of surface for aircraft to take off and land
跑道 | 跑道

ANIMAL WORLD

- blend in** (phr v) to look the same as the surrounding 融入 | 融入
- bramble** (n) a bush with thorns 有刺灌木 | 有刺灌木
- coat** (n) the fur or hair on an animal 皮毛 | 皮毛
- forest** (n) a large area of land covered with plants and trees 森林 | 森林
- roe deer** (n) a kind of small deer 麝 | 麝
- scent** (n) a smell produced by an animal 氣味 | 氣味
- spring** (v) to jump forwards or upwards quickly and suddenly 躍起 | 躍起
- territory** (n) an area that an animal tries to control 地盤 | 地盤
- thorn** (n) a sharp point on the stem of a plant 刺 | 刺
- wood** (n) an area of land covered with plants and trees 樹林 | 樹林
- zigzag** (n) to take a series of sharp turns while you move
沿之字線移動 | 沿之字线移动

THE JOLLY FAMILY

- bow** (n) a knot with two curved parts and two loose ends 點名 | 点名
- fringe** (n) the hair that hangs over your forehead 劉海 | 刘海
- mane** (n) the long hair along the top and sides of the neck of certain mammals 鬃毛 | 鬃毛
- nit** (n) the egg of a louse 蝨卵 | 虱卵
- play** (v) to pretend to be someone else 假裝 | 假装
- raggedy** (adj) dirty and untidy 髒亂 | 脏乱
- snip** (v) to cut something with scissors in small, quick cuts 剪斷 | 剪断
- tuft** (n) a small amount of hair growing together 一簇 | 一簇

SAMSAM

- bossy** (adj) always telling people what to do 專橫 | 专横
- disturb** (v) to stop someone from what they are doing and upset them
打擾 | 打扰

LITTLE BROWN BEAR

- sleepless** (adj) without sleep 失眠 | 失眠
- What's up?** (phr) What has happened? 怎麼了? | 怎么了?