

BMW M3/M4 F8X & M2 Competition F87

Part Number: MPI-BMM3F8-BS

This product is intended for use off road and race track use only. This product may not comply with some State, Federal, Provincial and/or Local laws, ordinances, regulation or emissions. By purchasing this product the buyer acknowledges that MODE has made him or her aware that these products are intended for off road & track use only and takes full responsibility in ensuring that his or her vehicle is compliant with all State, Federal, Provincial and/or Local laws, ordinances, regulation or emissions

Air+ Intake Kit Contents:

- 1x Air+ Intake Primary Pipe w. MODE Logo
- 1x Air+ Intake Secondary Pipe
- 2x Black 90 Degree Silicone Hoses
- 4x 75-90mm Stainless Steel Hose Clamps
- 2x Velocity Stacks
- 2x Stainless Steel Mesh Air+ Filters
- 2x Large Stainless Steel Hose Clamps for Air Filters
- 4x MAF Screws
- 2x Air+ Pre Filter Black

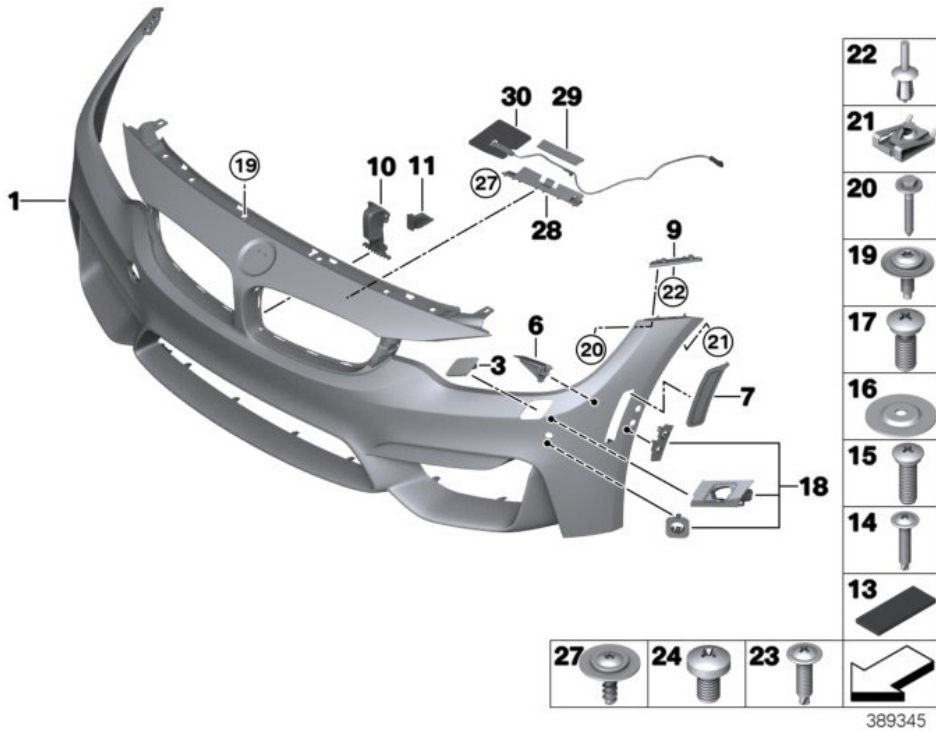
Charge Pipe Kit (Optional):

- 2x Charge Pipes
- 2x Silicone Hose
- 4x Stainless Steel Hose Clamps



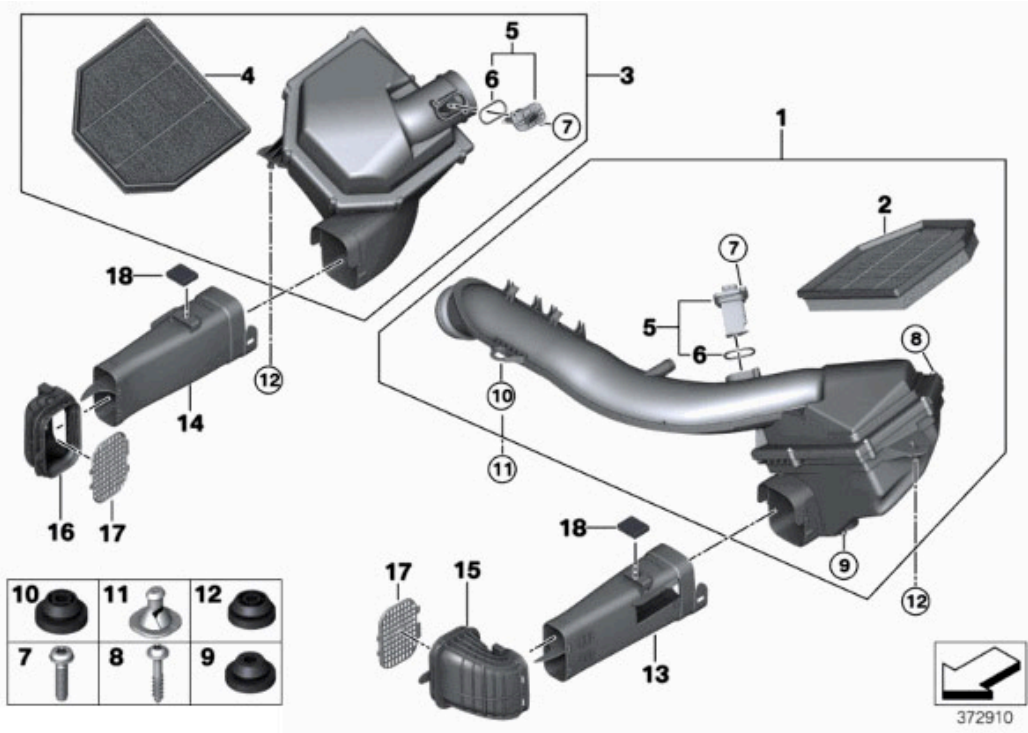
STEP 1

Lift Rubber strip on top of front bumper to locate screws #19, remove to gain access inside the bumper and to backside of kidney grilles. Carefully release tabs on backside of kidney grilles to release both Left and Right Kidney Grilles.



STEP 2

Completely remove carbon strut brace, stock air intake tube #10, air boxes #12, Intake Ducts #13 & #14, Rubber elbows #15 & #16 and mesh covers #17.



STEP 3

Spray inside of MODE silicone elbows with silicone based spray for lubrication and carefully install into kidney vent/duct area as pictured. Once inserted adjust for elbow to sit in desired position with enough exposed silicone to allow MODE Velocity stack to be inserted and clamped into place.



STEP 4

Install MODE Air+ Filter onto Velocity Stack and loosely fasten clamp.

Optional: Fit MODE Air+ Pre Filter onto MODE Air+ Filter



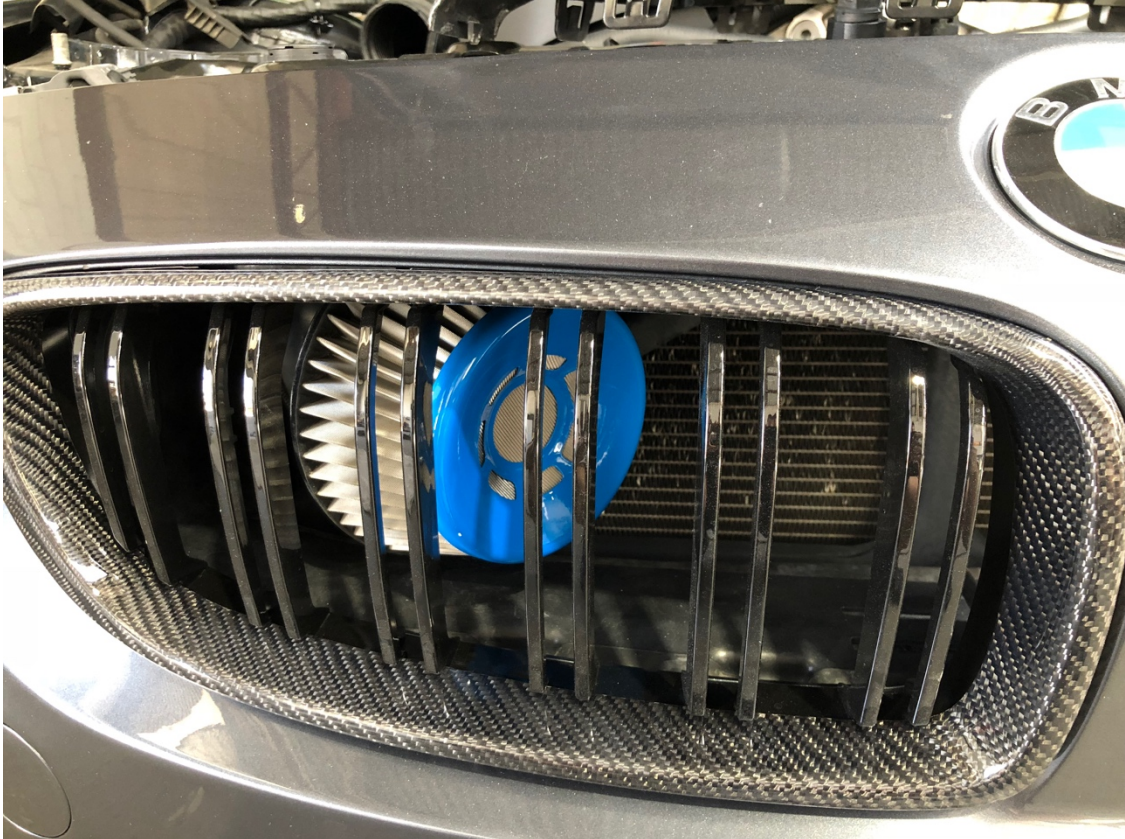
STEP 5

Slide Hose Clamp onto silicone and Install MODE Air+ Filter and Velocity Stack into position.



STEP 6

Test fit Kidney Grille without completely clicking into place. Once happy with position tighten clamps. If adjusted and fitted correctly the intake will not be touching anything.



STEP 7

Install Intake Pipes (Make sure silicone is sprayed inside for lubrication and adjustment).
Optional: Install MODE Charge Pipe Kit



STEP 8

Make minor adjustments if required then tighten everything up, re-install sensors and breather line, carbon strut brace and kidney grilles.



STEP 9

Start vehicle and let it run until engine is warm and returns to normal idle RPM.

We suggest taking vehicle for a drive onto the highway to allow the engine to adapt to the massive volume of air MODE Air+ will now allow.

MODE Air+ will usually take 1-2 weeks to completely adapt to your vehicle, to reduce the adaption time the vehicle will need to be driven through each gear and speed to consume maximum velocity of air. It may be best to do this on a race track or drag strip.

