

SS190 Parts Manual

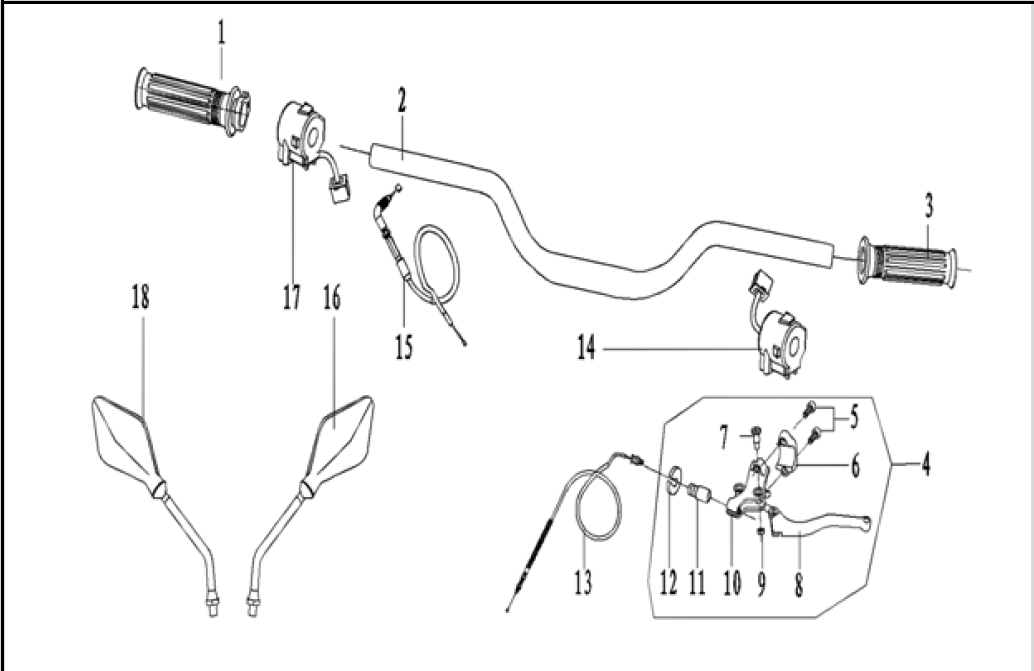


CODE: BP119

INCOMPLETE MANUAL
PUT IN TICKET FOR SERVICE



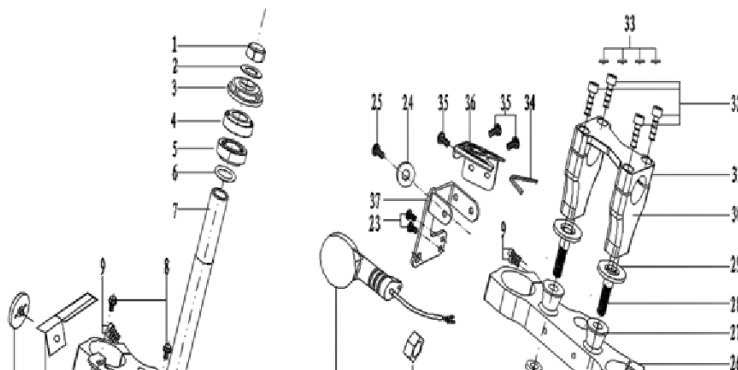
01. HANDLEBAR ASSEMBLY

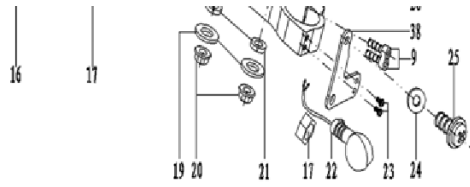
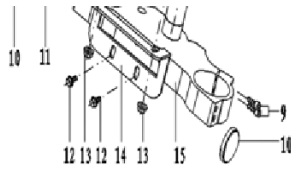


No.	BP Code	Part Name(Remark)	Unit	Qty
1	BP117-01-001	throttle assembly	set	1

2	BP117-01-002	handle bar (steel, fat bar, L=720mm, black)	set	1
3	BP117-01-003	girp, left (black)	pcs	1
4	BP117-01-004	clutch lever assembly	pcs	1
5	BP110-12-015	hex. bolt with flanged face (M6×20)	pcs	2
6	BP117-01-005	clutch perch bracket	pcs	1
7	BP110-01-003	bolt with step (M6X25, step length 9, blackish green)	pcs	1
8	BP117-01-006	hand lever, left(black)	pcs	1
9	BP117-01-007	hexagon nut (M6, selflock)	pcs	1
10	BP117-01-008	clutch perch	pcs	1
11	BP117-01-009	Adjusting Bolt	pcs	1
12	BP117-01-010	Tightening Nut	pcs	1
13	BP117-01-011	Clutch Cable (two part, Length: 750mm, Travel: 78mm)	pcs	1
14	BP117-01-012	left switch	pcs	1
15	BP117-01-013	Throttle Cable (Length:740mm, Travel: A+B 96mm)	pcs	1
16	BP117-01-014	rearview mirror, left (M10*1.25)	pcs	1
17	BP117-01-015	right switch	pcs	1
18	BP117-01-016	rearview mirror, right (M10*1.25)	pcs	1

02. STEERING SYSTEM AND TRIPLE CLAMP

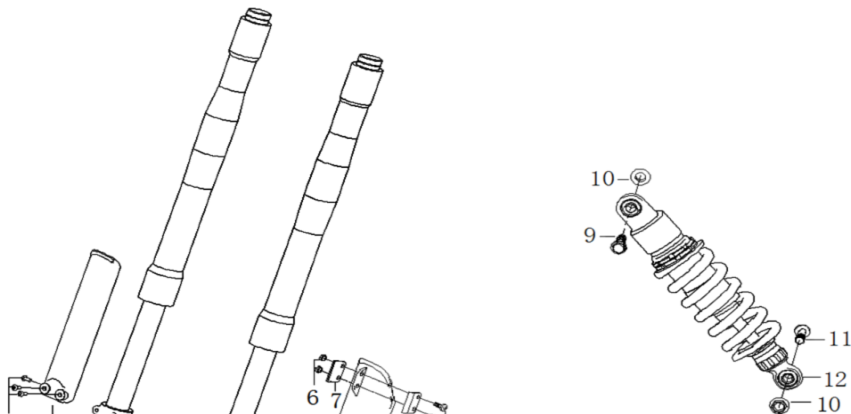


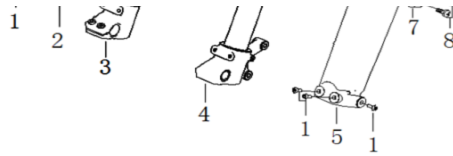


No.	BP Code	Part Name(Remark)	Unit	Qty
1	BP110-02-008	stem nut (M22)	pcs	1
2	BP110-02-009	stem nut washer ($\phi 22 \times 32 \times 1$, galvanized)	pcs	1
3	BP110-02-011	stem nut (M22X1.0)	pcs	1
4	BP110-02-012	cone bearing (OD $\phi 46$, ID $\phi 22$)	pcs	1
5	BP110-02-013	cone bearing (OD $\phi 46$, ID $\phi 23.5$)	pcs	1
6	BP110-02-014	steering stem dust seal ($\phi 24 \times 35 \times 1$, galvanized)	pcs	1
7	BP110-02-015	steering stem (length 237)	pcs	1
8	BP117-02-001	step bolt (hex. Frange, M6*16, step length $\phi 8-5$)	pcs	2
9	BP112-02-007	hex. socket head cap screw (M6x25, galvanized)	pcs	8
10	BP117-02-002	reflector (yellow,M5)	pcs	2
11	BP117-02-003	speedo cable clamp	pcs	1
12	BP110-10-026	hex. bolt with flanged face (M6 \times 12, galvanized)	pcs	2
13	BP117-02-004	hex. nut with flanged face (M6)	pcs	2
14	BP117-02-005	bracket for head light, lower (steel)	pcs	1
15	BP117-02-006	lower triple clamp ($\phi 48$)	pcs	1
16	BP117-02-007	front right turn light	pcs	1
17	BP117-02-008	Hex Tighting Nut (M10)	pcs	1
18				
19	BP110-02-019	washer ($\phi 10 \times \phi 25 \times 2$)	pcs	2
20	BP110-02-020	hex.flange self-lock bolt (M10*1.25)	pcs	1
21	BP110-02-018	rubber washer ($\Phi 10 \times \Phi 21 \times 5$)	pcs	2

22	BP117-02-009	front left turn light	pcs	1
23	BP117-02-010	cross recessed pan head screws (M5X12,with flat pad and washer)	pcs	4
24	BP110-12-003	washer for front fender (φ6X18X4)	pcs	2
25	BP117-02-001	Cross Recessed Pan Head Screws(M6X16)	pcs	2
26	BP117-02-012	upper triple clamp (φ45)	pcs	1
27	BP110-02-005	rubber cushion for handle bar	pcs	2
28	BP117-02-013	stud bolt (galvanized)	pcs	2
29	BP110-02-004	flat washer (φ10x30x2)	pcs	2
30	BP117-02-014	lower handbar mount (φ29)	pcs	2
31	BP117-02-015	upper handbar mount (φ29)	pcs	1
32	BP112-02-003	hex. socket head cap screw (M8X25, galvanized)	pcs	4
33	BP117-02-016	plug for hex. Bolt	pcs	4
34	BP117-02-017	U type strip	pcs	1
35	BP110-10-026	Cross Recessed Pan Head Screws(M6X12)	pcs	3
36	BP117-02-018	power switch bracket (black)	pcs	1
37	BP117-02-019	lampshade bracket, right (steel)	pcs	1
38	BP117-02-020	lampshade bracket, left (steel)	pcs	1

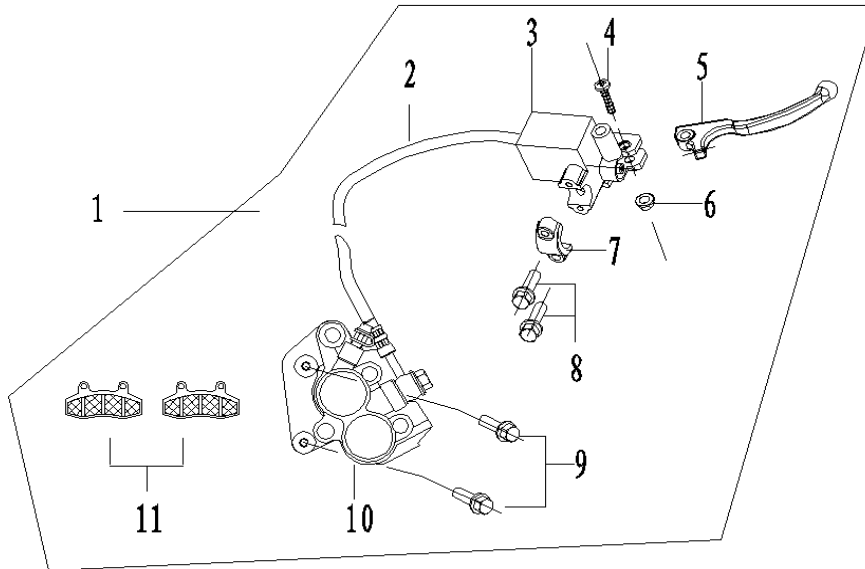
03. FRONT AND REAR SUSPENSION





No.	BP Code	Part Name(Remark)	Unit	Qty
1	BP110-10-010	hex. socket head cap screw (M6X12 stainless)	pcs	6
2	BP117-03-001	front shock guard, right	pcs	1
3	BP119-03-001	front fork, right (length 700)	set	1
5	BP117-03-003	front shock guard, left	pcs	1
6	BP111-03-005	hex. self-locking nut with flanged face (M6)	pcs	2
7	BP117-03-004	brake cable clamp	pcs	2
8	BP111-03-007	hex. socket head cap screw (M6X10 stainless)	pcs	2
9	BP110-03-001	hex.flange bolt (M10X40X1.25)	pcs	1
10	BP110-02-020	hex. self-locking nut with flanged face (M10X1.25)	pcs	1
11	BP110-03-002	hex.flange bolt (M10X50X1.25)	pcs	1
12	BP116-03-002	rear shock (1000lbs, 330L)	pcs	1

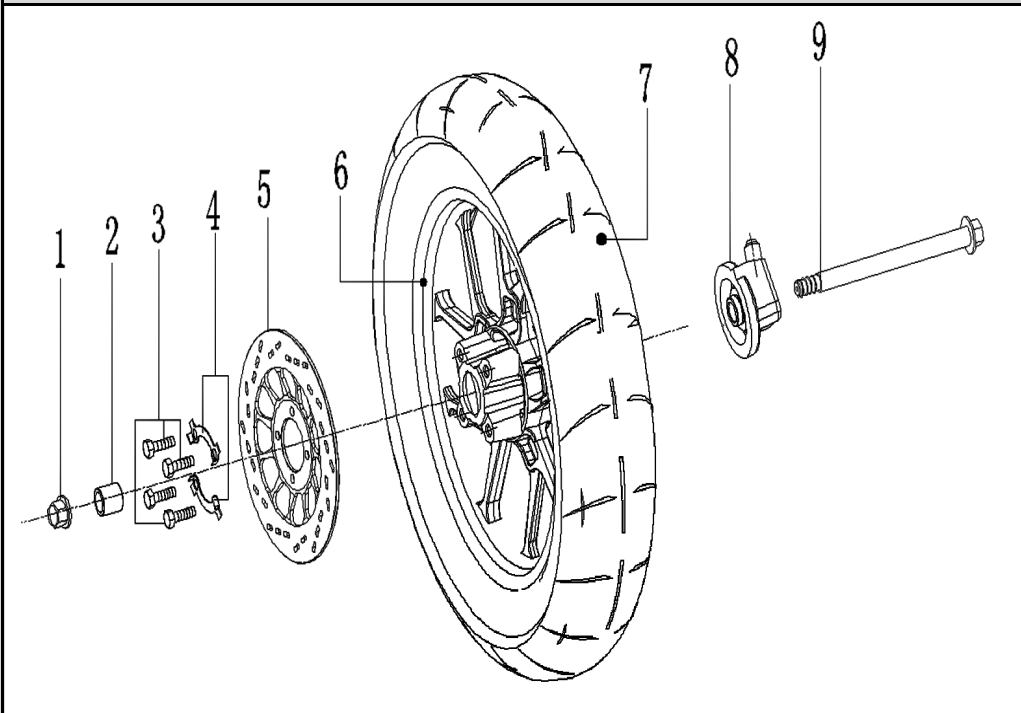
04. FRONT BRAKE SYSTEM



No.	BP Code	Part Name(Remark)	Unit	Qty
1	BP117-04-001	front brake assembly (length 1090, with front brake switch)	set	1
2	BP118-04-001	front brake hose (length 1090)	pcs	1
3	BP117-04-003	reservoir, front brake	pcs	1

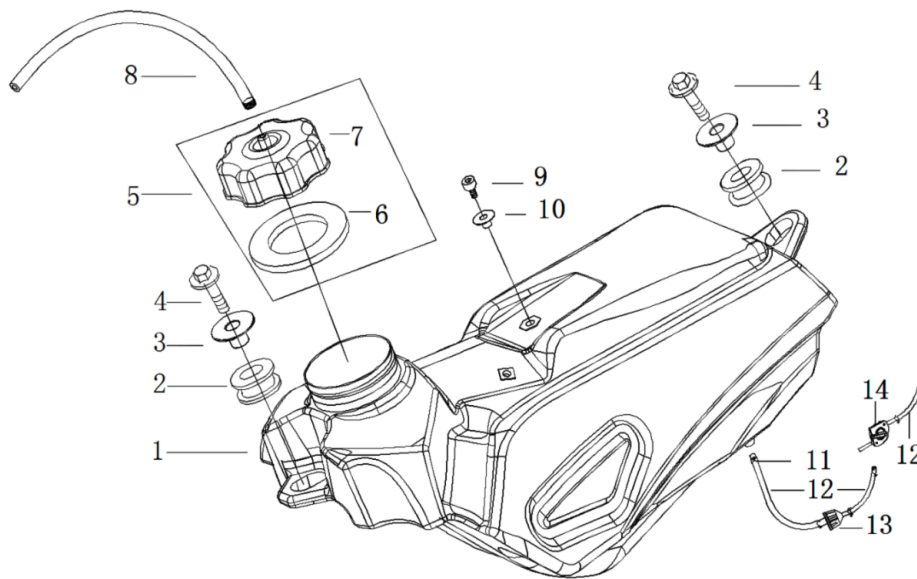
4	BP117-04-004	plus head screw, with step (M6X30, step length 16)	pcs	1
5	BP117-04-005	brake lever	pcs	1
6	BP117-04-006	hex. self-locking nut with flanged face (M6)	pcs	1
7	BP117-04-007	front brake perch (black)	pcs	1
8	BP110-12-012	hex. flange bolt (M6X25, blackish)	pcs	2
9	BP117-04-008	hex. flange bolt with flanged face (M8X22, galvanized)	pcs	2
10	BP117-04-009	front brake caliper (with brake pads)	pcs	1
11	BP110-04-004	front brake pads	set	1

05. FRONT WHEEL ASSEMBLY



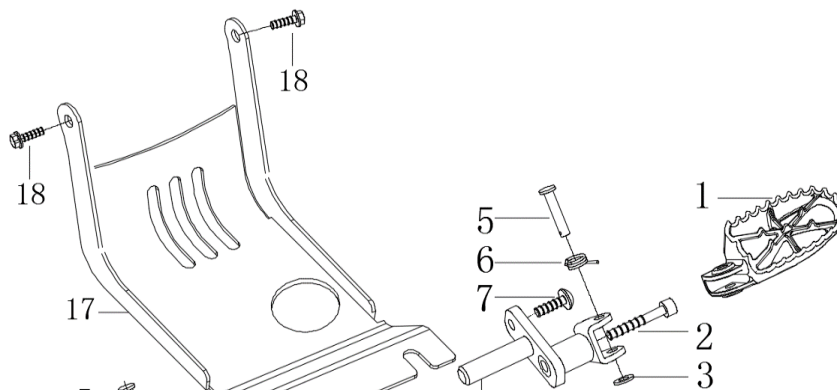
No.	BP Code	Part Name(Remark)	Unit	Qty
1	BP110-08-021	hex. self-locking nut with flanged face (M12X1.25)	pcs	1
2	BP117-05-001	front wheel axle spacer left (φ20Xφ12X24, galvanized)	pcs	1
3	BP110-17-014	hex. bolt with flanged face (M8x25 , galvanized)	pcs	4
4	BP117-05-002	locking piece for front rotor	pcs	2
5	BP117-05-003	front rotor (φ220)	set	1
6	BP119-05-001	front rim assembly(3.0x14,black)	pcs	1
7	BP117-05-005	front tire (120/70-14)	pcs	1
8	BP117-05-006	Speedo Drive Unit	pcs	1
9	BP119-05-002	front wheel axle	pcs	1

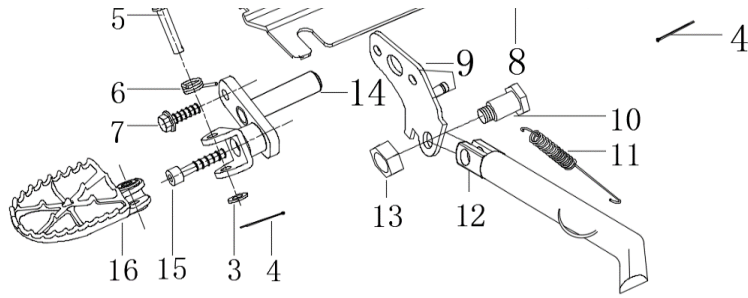
06. FUEL TANK



No.	BP Code	Part Name(Remark)	Unit	Qty
1	BP110-06-001	fule tank	kit	1
2	BP110-06-002	rubbler cushion	pcs	2
3	BP110-06-003	washer	pcs	2
4	BP110-06-004	hex.flange bolt (M8×25)	pcs	2
5	BP110-06-005	gas cap kit	set	1
6	BP110-06-006	rubbler washer (Φ20*Φ48*3)	pcs	1
7	BP110-06-007	gas cap	pcs	1
8	BP110-06-008	vent pipe	pcs	1
9	BP110-06-009	inner hex. countersunk head bolt (M6×16X1.25)	pcs	1
11	BP110-06-011	hoop clamp	pcs	1
12	BP110-06-012	oil transported line	pcs	2
13	BP110-06-013	filter	pcs	1
14	BP110-06-014	fule tap	pcs	1

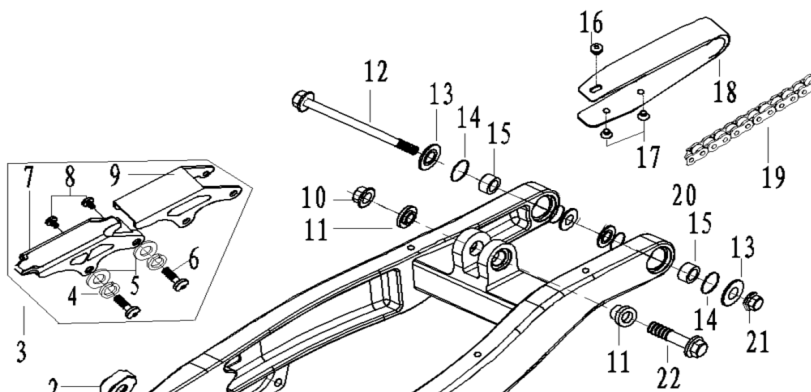
07. FOOTPEG ASSEMBLY

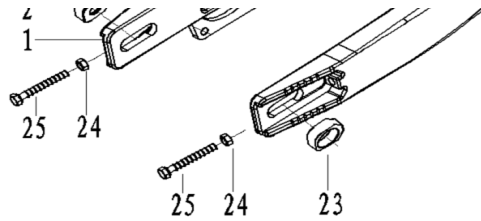




No.	BP Code	Part Name(Remark)	Unit	Qty
1	BP110-07-001	right foot peg	pcs	1
2	BP111-07-001	hexagon socket head cap screws (M8x50, stainless steel)	pcs	1
3	BP110-07-003	flat washer	pcs	2
4	BP110-07-004	split pin	pcs	2
5	BP110-07-005	foot peg pin	pcs	2
6	BP110-07-006	right foot peg spring	pcs	2
7	BP110-07-007	hex. bolt with flanged face (M8x35)	pcs	2
8	BP110-07-008	braket for right foot peg	pcs	1
9	BP117-07-001	bracket for side stand	pcs	1
10	BP111-07-003	step bolt (M10x30,φ12*18)	pcs	1
11	BP111-07-004	spring for side stand	pcs	1
12	BP111-07-005	side stand	pcs	1
13	BP111-07-006	hex. bolt with flanged face (M6x16)	pcs	1
14	BP110-07-009	braket for left foot peg	pcs	1
15	BP110-07-015	hexagon socket head cap screws (M8x40, stainless steel)	pcs	1
16	BP110-07-010	left foot peg	pcs	1
17	BP114-07-001	steel skid plate	pcs	1
18	BP111-07-007	hex. bolt with flanged face (M6x16)	pcs	1

08. SWING ARM





No.	BP Code	Part Name(Remark)	Unit	Qty
1	BP110-08-001	swing arm	pcs	1
2	BP110-08-002	chain adjuster, left	pcs	1
3	BP110-08-003	chain guard assembly	kit	1
4	BP110-08-004	spring washer	pcs	2
5	BP110-08-005	flat washer(ϕ 8x ϕ 16x2)	pcs	2
6	BP110-08-006	hexagon socket button head screws (M6)	pcs	2
7	BP110-08-007	plastic piece of chain guard	pcs	1
8	BP110-08-008	hexagon socket button head screws (M6)	pcs	1
9	BP110-08-009	outline border of chain guard	pcs	1
10	BP110-02-020	hexagon nut (M6)	pcs	1
11	BP110-08-011	bushing for swing arm	pcs	2
12	BP110-08-012	axle of swing arm (M12x215x1.25)	pcs	1
13	BP110-08-013	bushing for swing arm bearing	pcs	4
14	BP110-08-014	o-ring	pcs	4
15	BP110-08-015	needle bearing (ϕ 12* ϕ 24*20)	pcs	2
16	BP110-08-016	hex. socket countersunk Screw(M6x8)	pcs	1
17	BP110-08-008	hexagon socket button head screws (M6)	pcs	2
18	BP110-08-018	chain slider	pcs	1
19	BP117-08-001	chain	pcs	1
21	BP110-08-021	nut (M12x1.25)	pcs	1
22	BP116-08-003	hex. bolt with flanged face (M10x50x1.25)	pcs	1
23	BP110-08-023	chain adjuster (right)	pcs	1
24	BP110-08-024	nut (M8)	pcs	2
25	BP110-08-025	hexagon bolt (M6x50)	pcs	2