

NETZERO
FIRE

THE WATERPLACE

NETZEROFIRE.COM



BEAUTIFUL FLAMES FUELED BY WATER

Discover bright, realistic flames fueled by an unexpected source. NetZero Waterplaces are a luxurious and modern fire feature innovation, providing nearly endless opportunities to add a safe, beautiful and customizable focal point to your space. Able to be positioned nearly anywhere, The Waterplace requires only water and an electrical connection to produce controlled, customizable flames that are as stunning as they are energy efficient.



A UNIQUE LIQUID ASSET

EXPERIENCE FIRE LIKE NEVER BEFORE

Instead of a traditional burner, NetZero Waterplaces produce a fine water vapor that exquisitely replicates the look of real flames, meaning you get a safer, cleaner fire experience without harmful emissions. Water-fueled flames look and act just like the real thing — and are so convincing it would take a trained eye to spot the difference.

SAFE, PLENTIFUL H₂O

EARTH'S CLEANEST NATURAL FUEL

NetZero Waterplaces can go anywhere you have an electrical connection. Choose between manually refilling your water tank to enjoy your feature for hours on end or connecting it directly to a water line for constant, uninterrupted enjoyment. No venting is necessary, and there's no risk of damaging humidity or moisture buildup on surrounding surfaces.



THE WATERPLACE DIFFERENCE

The beauty of a NetZero Fire is in the details. The safe, cold vapor flames allow you to change out design accessories easily and without worry. Choose from a variety of beautifully crafted log sets, media and liners, then select the burner and housing to complete your NetZero Fire experience.



NETZERO WATERPLACE BURNERS

Choose from three standard, interconnectable burner sizes to create installations as small as 13 inches or as long as 20 feet.

THE WATERPLACE PLATINUM BURNERS

30+ adjustable flame colors | Automatic fueling with direct plumb option | Automatic draining via integrated pump (with no water supply line)
Control your Waterplace via integrated buttons, remote control or smartphone app | Two rows of LED lighting with controllable effects



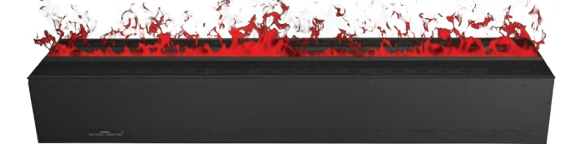
NZWP20B

Minimum Opening:
20" L x 12.9" W x 11.3" D



NZWP40B

Minimum Opening:
40" L x 12.9" W x 11.3" D



NZWP60B

Minimum Opening:
60" L x 12.9" W x 11.3" D

THE WATERPLACE BURNERS

Beautiful, natural orange flames | Manual water refueling | Manual water draining | Control via integrated buttons or remote control



NZW20B

Minimum Opening:
20" L x 12.9" W x 8.7" D



NZW40B

Minimum Opening:
40" L x 12.9" W x 8.7" D



NZW60B

Minimum Opening:
60" L x 12.9" W x 8.7" D

SURROUNDED BY BEAUTY

Add a firebox and choose from our optional log sets and liners to create a sense of warmth and depth with a just touch of nostalgia. Our beautiful stainless steel surrounds are designed to elevate your experience with the look and feel of a traditional fireplace while putting the modern convenience and sustainability of your Waterplace front and center.



BIRCH HD LOG SET WITH BLACK GLASS LINER



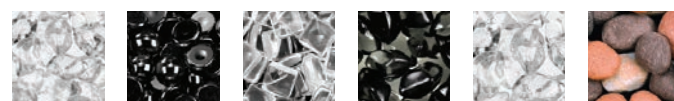
DRIFTWOOD HD LOG SET WITH CONCRETE WAVE LINER



WHITE OAK HD LOG SET WITH BLACK GLASS LINER



NORWAY SPRUCE HD LOG SET WITH RED CLINKER BRICK LINER



CLEAR GLASS DIAMONDS **BLACK GLASS DIAMONDS** **CLEAR ICE CUBES** **MIDNIGHT BLACK GLASS** **CRUSHED ICEBERG CHIPS** **NATURAL RIVER ROCK**

MEDIA



BLACK GLASS **RED CLINKER BRICK** **SLATE GRAY CLINKER BRICK** **BLACK WAVE** **CONCRETE WAVE**

LINERS



SINGLE-SIDED



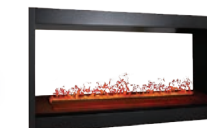
LEFT-CORNER



RIGHT-CORNER



THREE-SIDED



SEE-THROUGH



PENINSULA

BRILLIANT FLAMES IN GLOWING COLOR

Exquisite romance, supreme comfort, refined elegance or sleek modernity — with 30 brilliant colors found only on The Waterplace from NetZero Fire, you have the freedom to transform your space like never before. Our ultra-efficient LEDs cover the entire color spectrum and can be changed with the tap of a button. Rotate between traditional orange flames or create a light show all your own; when it comes to setting the mood, nothing shines brighter than NetZero Fire.



IMAGINE THE POSSIBILITIES

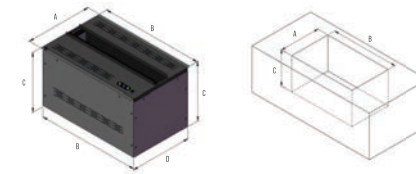
The unmatched versatility of The Waterplace burners means they can be configured and personalized for any residential or commercial setting. Perfect for wall or corner accents or as a breathtaking divider for an entire room, NetZero Waterplaces integrate flawlessly in both new and retrofit applications — or wherever a modern touch of elemental beauty is desired.



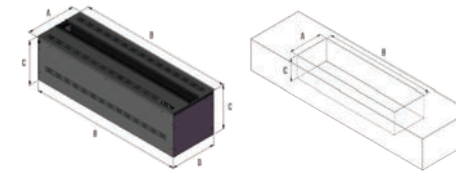
DESIGNED TO FIT YOUR VISION

Multiple sizes, firebox surrounds and placement options mean you can create a world that's all your own. With no venting and minimal surface clearances required, The Waterplace can be placed nearly anywhere you or your client can imagine.

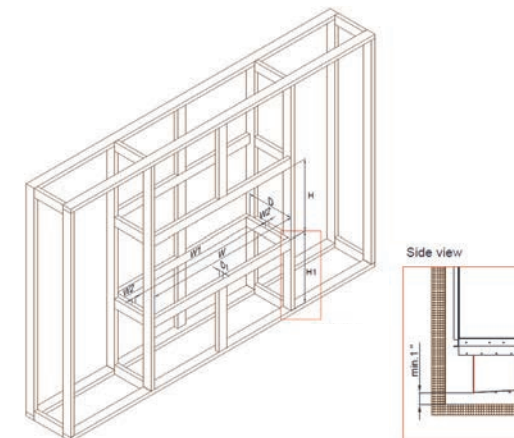
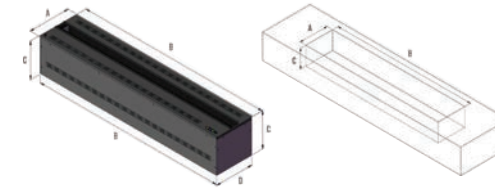
NZW20



NZW40



NZW60



FOR INSTALLATION SPECIFICATIONS AND REQUIRED CLEARANCES,
REFER TO THE INSTALLATION MANUAL.

BURNER DIMENSIONS (in)

	A	B	C	D
NZW20B	12 15/16"	20"	8 3/4"	12"
NZWP20B	12 15/16"	20"	11 3/8"	12"
NZW40B	13"	40"	8 3/4"	12"
NZWP40B	13"	40"	11 1/4"	12"
NZW60B	13"	60"	8 3/4"	12"
NZWP60B	13"	60"	11 1/4"	12"

CAVITY MEASUREMENTS SITE BUILT ENCLOSURES (in)

	A	B	C
NZW20B	12 1/8"	20 1/4"	11"
NZWP20B	12 1/8"	20 1/4"	13 5/8"
NZW40B	12 1/8"	40 1/4"	11"
NZWP40B	12 1/8"	40 1/4"	13 5/8"
NZW60B	12 1/8"	60 1/4"	11"
NZWP60B	12 1/8"	60 1/4"	13 5/8"

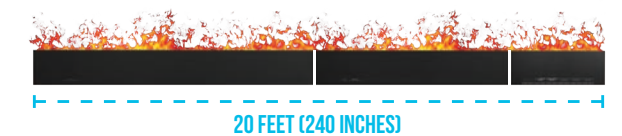
FIREBOX FRAMING DIMENSIONS (in) – Single-Sided

	W	W1 min	W2 max	D	D1 max	H	H1 min
NZW20B	40"	28-34"	3-6"	17 1/2"	2"	27 1/2"	12"
NZWP20B	40"	28-34"	3-6"	17 1/2"	2"	27 1/2"	12"
NZW40B	52"	40-46"	3-6"	17 1/2"	2"	27 1/2"	12"
NZWP40B	52"	40-46"	3-6"	17 1/2"	2"	27 1/2"	12"
NZW60B	76"	64-70"	3-6"	17 1/2"	2"	27 1/2"	12"
NZWP60B	76"	64-70"	3-6"	17 1/2"	2"	27 1/2"	12"



UP TO 20 FEET OF FLAME

Connect any combination of burners to create a continuous line of flame up to 20 feet.



WATER HARDNESS

Water hardness levels will affect performance and flame height.



INSTALLATION

Avoid drafty areas for optimal flame performance. Refer to the installation manual for guidance.



MAINTENANCE

Minimal maintenance is required. Refer to the Maintenance Checklist for details.

NETZERO FIRE

NetZero Fire's mission is to create high-quality fire features that produce little or no impact on the environment. By leading our market with exceptional designs and forward-thinking, energy-neutral technologies, we allow our customers to better manage their carbon footprints while creating beautiful, atmospheric spaces.

CONTACT US

SALES@NETZEROFIRE.COM

NETZERO FIREPLACES
520 E AVENUE NW
CEDAR RAPIDS, IA 52405

MANUFACTURED TO UL STANDARDS

NETZERO IS A DISTRIBUTOR OF THESE PRODUCTS, WHICH ARE DESIGNED AND MANUFACTURED BY AFIRE LTD. THERE ARE NO WARRANTIES WHICH EXTEND BEYOND THE DESCRIPTION ON THE FACE HEREOF AND SUPPLIED MANUALS. IMPLIED WARRANTIES OF MERCHANTABILITY, IMPLIED WARRANTIES OF FITNESS, IMPLIED WARRANTIES OF WORKMANSHIP AND OTHER IMPLIED WARRANTIES ARE EXCLUDED BY NETZERO.

PRODUCTS AND SPECIFICATIONS ARE SUBJECT TO CHANGE WITHOUT NOTICE.
IMAGES SHOWN MAY DIFFER FROM ACTUAL HOME INSTALLATIONS.