

MONTREAL™ WITH DENVER E-RIBBON BASIC 720MM / 920MM / 1120MM



Using the CEVB (Controlled Ethanol Vapour Burning) technology, Decoflame has created Montreal with the Denver e-Ribbon Basic burner, a simplified automatic burner with built-in casing.

Featuring the e-Ribbon Fire™ burning system, it is suitable where safety and ease operation are in focus.

It is possible to **DOWNLOAD** example drawings below. They are shown with convertible standard size models.
(Can be changed from a manual model burner to an electronic).

Montreal can also be ordered with:

- A. Manual burner
- B. Denver e-Ribbon Basic burner (non-convertable)
- C. MTM (made-to-measure) with Denver e-Ribbon burner



Open to front

- ↘ 800x400x300
- ↘ 1000x400x300
- ↘ 1200x400x300



Open to front and one side

- ↘ 800x400x303
- ↘ 1000x400x303
- ↘ 1200x400x303



Open to front and both sides

- ↘ 800x400x308
- ↘ 1000x400x308
- ↘ 1200x400x308



Open to front and back

- ↘ 800x400x308
- ↘ 1000x400x308
- ↘ 1200x400x308



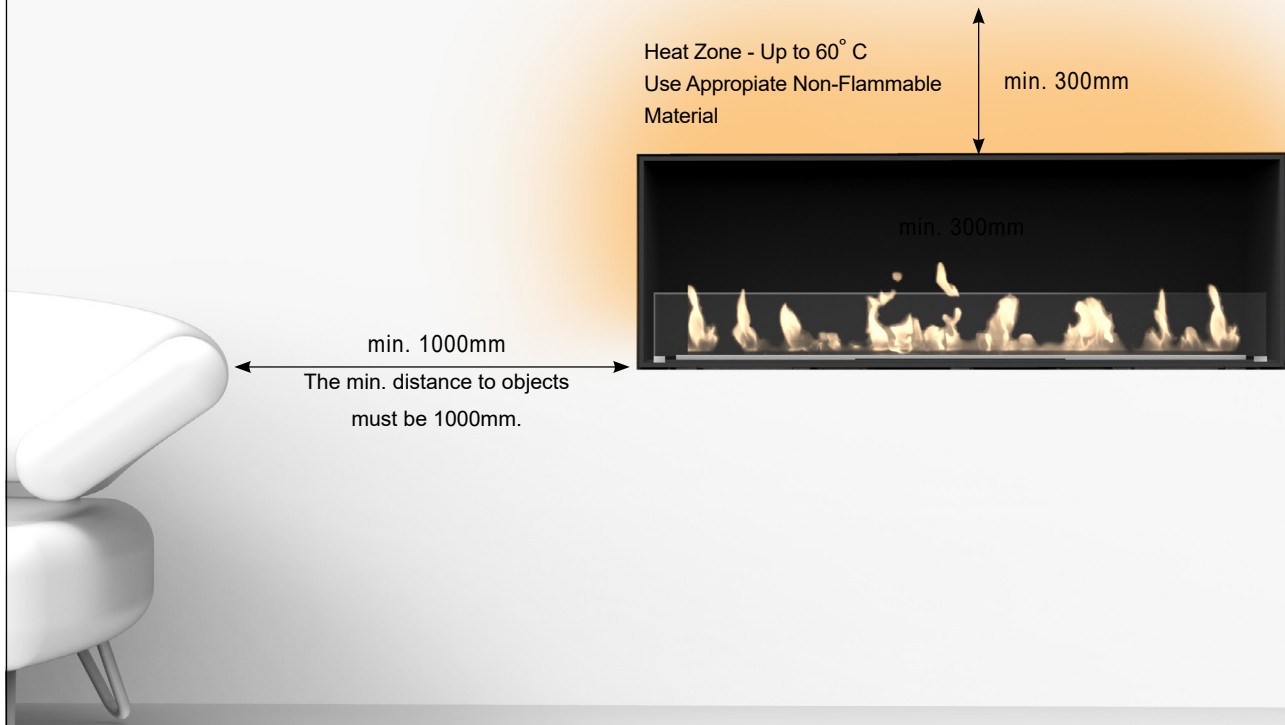
Open to front, back and one side

- ↘ 800x400x308
- ↘ 1000x400x308
- ↘ 1200x400x308



See video of Montreal with Denver e-Ribbon Basic burner. Scan the QR code.

Heat-Zone



Location under TV screen

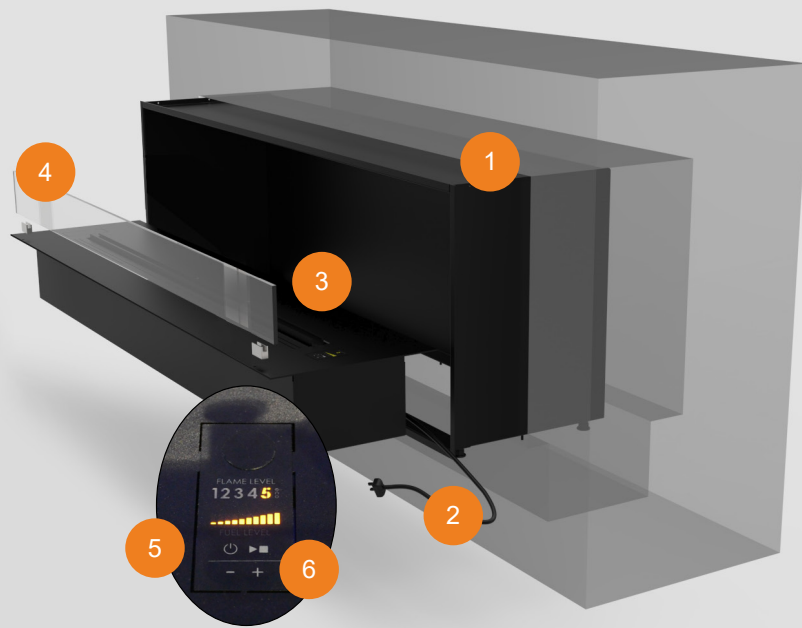
It is NOT recommended to place TV screens or valuable paintings over the fireplace as the rising hot air can damage the materials.

If you decide to use a construction containing a TV screen over the bio fireplace, the following instructions must be followed, otherwise consult your retailer or Decoflame.



It is imperative to follow the indications in the User's Manual concerning the installation of decorative or electronic items above the fireplace.

INSTALLATION





Step 1: Make sure that the dimensions of the cut-out correspond to the measurements indicated in the technical drawing received with your fireplace. *Everything must be in level.*

Step 2: Connect the fireplace to an electrical power supply.

Step 3: Recess the fireplace into the wall cut-out according to the indications in the User's Manual.

Step 4: Place the glass screen/s on to the top pin holders.

Step 5: Turn on  the fireplace. Fill in the right amount of bioethanol by verifying the level on the indicator.

Step 6: Start the fireplace by pressing the Play/Start  button on the control panel. Wait around 3 minutes before the fireplace is fully operational.

Enjoy your fire.

Features

- e-Ribbon™ technology
- Safety sensors / Safety chamber
- Fuel Level Indicator / Flame Level Indicator
- Remote control
- Bluetooth / App
- 6 flame levels (1-5 + ECO-Wave)
- 8mm aluminium casing and baseplate
- No chimney required - no smoke, ash or soot
- Safety chamber
- Glass screen ordered (Full and/or low glasses)

Optional

- Made to measure
- Brushed and polished steel, brushed
- RAL colors

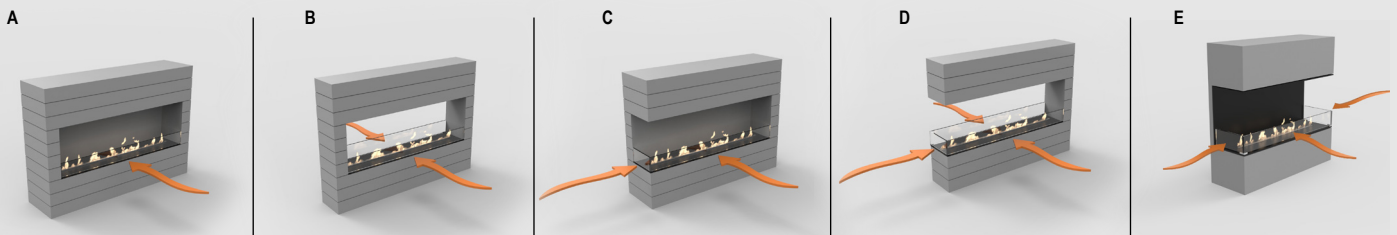
Standard finishes



Optional



Glass shield



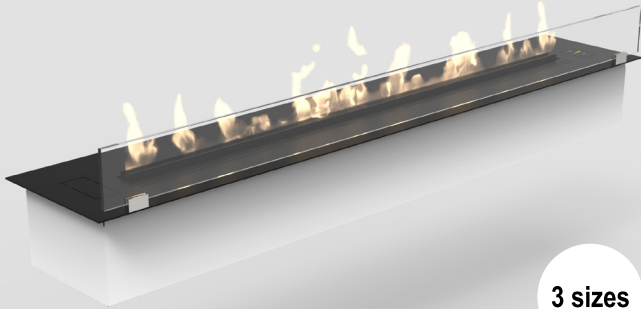
Decoflame strongly recommends installing glass shields in order to protect the flame from draught, while keeping it vivid.

Model A comes with one low glass.

Model B comes with either two low glasses or one full glass and one low glass.

Model C - E can be ordered with low glass. We recommend it as illustrated for the best result regarding design and operation.

DENVER E-RIBBON BASIC BURNER



3 sizes

TOPPLATE (BURNER) FINISH

- Standard: Black powder coated top-plate
- Optional: Stainless steel and any RAL colour
- Other finishes on request

TECHNICAL INFORMATION

	720mm	920mm	1120mm
Flametray size	500mm	700mm	900mm
Capacity	4L	5,8L	7,2L
Fuel consumption	0,3 - 0,6 l/h	0,4 - 0,8 l/h	0,6 - 1 l/h
Burning time	7 - 20h	7,5 - 20,8h	7,3 - 20h
Heat output	1,2 - 3,2 kWh	1,6 - 4,3 kWh	2,1 - 5,7 kWh
Net weight	19,5kg	22kg	26kg
Minimum room size	64m ³	89m ³	115m ³

Power supply: 220V - 240V, 50 Hz 5A

BIOETHANOL

For use and information about bioethanol, please visit our website www.decoflame.com.

(Please be aware that bioethanol is essential to a proper use and guarantee of your product).

BURNER TECHNICAL INFO

