

## Mondo mudguard installation TWS-25



# Terrawagen

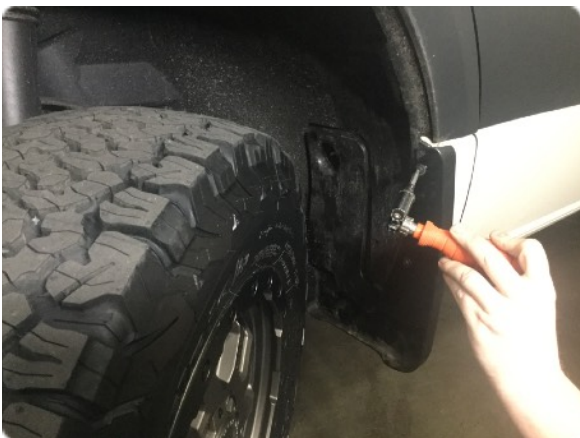
Thanks for buying our products! The Mondo mudguard is designed to give you more space for larger tires on your 907 / VS30 Sprinter 2019+

### Required tools for installation:

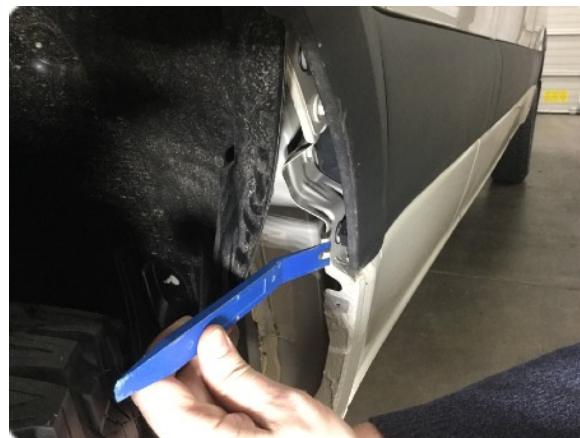
- Hand drill
- T-25 torx bit
- 1/8" & 1/4" drill bit
- #2 philips screw driver
- plastic trim removal tool
- box knife
- 10mm wrench / socket
- hammer

### Vehicle prep:

Remove mudflap



remove cladding



remove 3 10mm bolts



remove lower 10mm nut



pry fender from sill



bend sill down and pull





# Mondo mudguard TWS-25

## Vehicle prep:

cut sealant and pry here



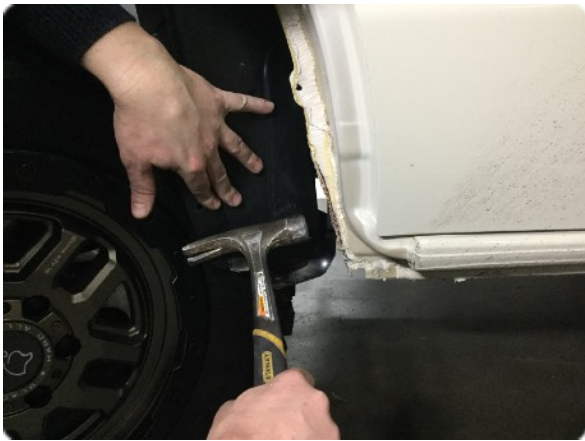
remove excess sealant



mark section to be folded



fold over body seam 90 degrees



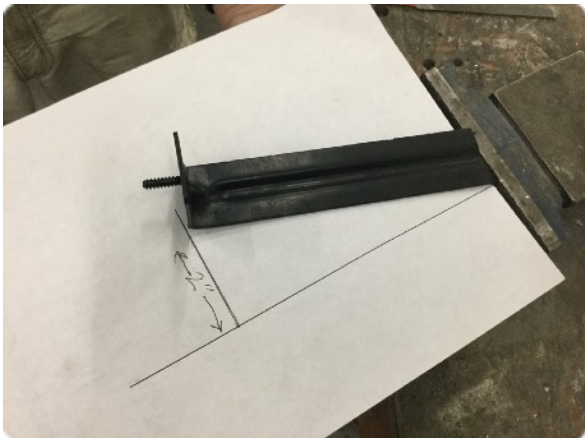
cut liner as shown



remove liner bracket



modify bracket in vise. 2 inches



attach trim to Mondo mark hole



drill 1/4" hole as shown



Re-install liner bracket using factory nut. Attach liner to lower bracket stud.

\* 2 inch bend rearward of front wheel



# Mondo mudguard TWS-25

## Mondo installation:

swap mud flap clips over



install speed nut



tuck liner behind Mondo



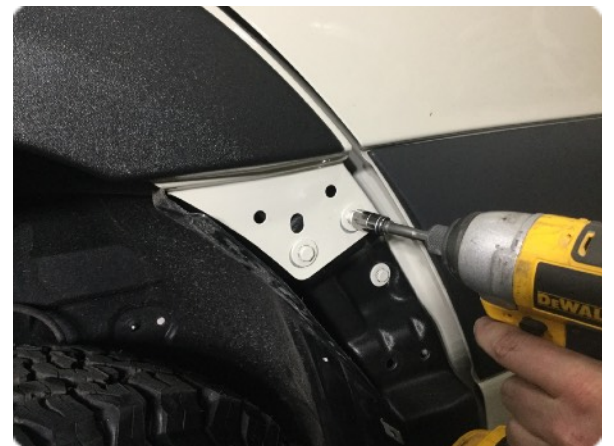
hand tighten body bolt



install lower bolt and nut



install fender bolts



modify mud flap top



Modify lower mud flap



location for anchor screw



\* Anchor screw ( optional ) will add an additional .5" of clearance. Drill through mud flap into folded body seam that you hammered over. Use supplied 2" screw to anchor and pull mud flap closer to the body.

# Mondo mudguard TWS-25

## Mondo installation:

install mud flap lower stud first



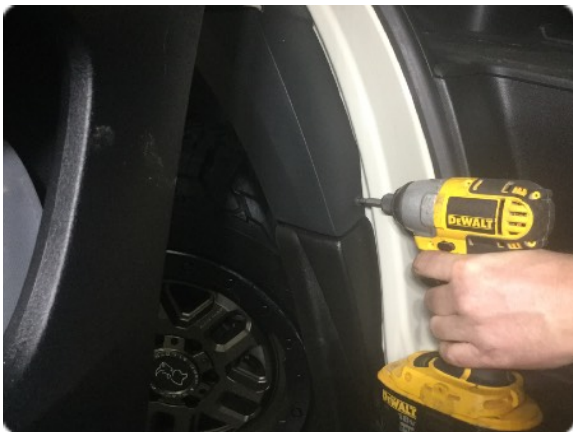
install T-25 screws



install body molding



install molding screw



All done, repeat for other side.



Thanks for buying our stuff!

Just a few items to cover: Please be careful with power tools.

\*Make sure to paint any areas that may have exposed metal.

\*You can use a heat gun to help relax the liner

Email us with any questions: [info@terrawagen.com](mailto:info@terrawagen.com)

