



Aluminess Products, Inc  
 10943 Wheatlands Ave  
 Santee, CA 92071  
 619-449-9930

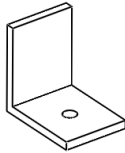
## **Surf Pole Installation Instructions** **Mercedes Sprinter 07+ Track Mount Surf Pole**

### **Please read before beginning**

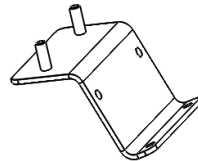
- *Stainless Steel nuts and bolts may bind permanently together if installed incorrectly; to avoid this it is recommended to apply a small amount of lubricant to bolt threads before installing (wax, never cease, etc.)*
- *The surf pole is designed to fit in front of the rear wheel of the van.*



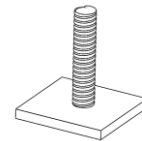
### **Included Parts/Subassemblies**



X1  
**"L" Bracket**



x1  
**Lower Mounting Plate**



X1  
**Gutter Bracket**

### **Included Hardware**

### **Quantity**

- |   |   |
|---|---|
| • 70008 – ¼-20 Nylock Nuts Stainless Steel                | 5 |
| • 70009 – ¼" x 5/8" Washer Stainless Steel (.03" Thick)   | 7 |
| • 70019 – 5/16-18 Nylock Nuts Stainless Steel             | 1 |
| • 70020 – 5/16" Washer Stainless Steel (.03" Thick)       | 1 |
| • 70060 – ¼-20 x 1" Button Head Cap Screw Stainless Steel | 2 |
| • 70201 – 5/16-16 x 1" Socket Cap Screw                   | 1 |
| • Antiseize Packet, 2g                                    | 1 |

**Installation Instructions**

*NOTE: If you have purchased an accompanying pair of nerf bars, it is easier to install the surf pole **first**.*

*NOTE: Factory or aftermarket roof tracks must be installed before the surf pole.*

**Upper Attachment Assembly:**

1. Slide the gutter bracket into the roof gutter from the rear of the vehicle with stud pointing upwards.
2. Install the "L" bracket onto gutter bracket using the pre-drilled holes thread on a 1/4" washer and nut. Do not completely tighten down yet; ensure the "L" bracket is loose enough to slide the brackets back and forth (see Figure 1).



**Figure 1: Brackets installed on gutter**

3. Position the surf pole where you would like it to sit on the vehicle.
4. Clamp the top of the surf pole to the L-bracket using C-clamps or spring clips with "L" bracket on outside face of surf pole (see Figure 2).

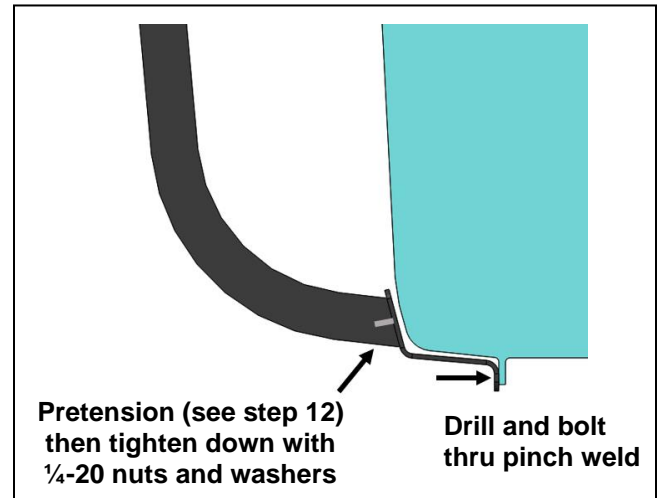


**Figure 2: Ladder installed on roof gutter**

5. Using a 1/4" drill bit, drill through "L" bracket using the surf pole as a template on both brackets.
6. Install the 5/16" bolt, washer and nut and tighten by hand—do not torque down bolts yet.

**Bottom Bracket Assembly:**

7. Hold the lower attachment bracket up to the vehicle body using C-clamps or spring clips. Be sure to align the bottom two holes with the pinch weld on the vehicle



**Figure 3: Lower Attachment Installation**

8. Using a 1/4" drill bit, make two holes through the pinch weld using the bracket as a template for alignment.
9. Install the 1/4" cap screws, washers, and nuts into the drilled holes and tighten.
10. Place surf pole against lower attachment bracket making sure the bottom of the surf pole aligns over the threaded studs.
11. Install 1/4" washers and nuts onto the threaded studs.
12. While applying downward pressure to the surf pole, tighten the 1/4"-20 nuts.
13. Visually inspect the position of the surf pole—if satisfied, tighten down all the bolts to at least 10 lb-ft of torque.
14. Check all fasteners for fitment after 50 miles of driving, and every 1000 miles afterwards. Enjoy!