



Aluminess Products Inc
9402 Wheatlands Ct. #A
Santee, CA 92071
619-449-9930

NERF BAR INSTALLATION INSTRUCTIONS

07+ Sprinter

Please read before beginning

- *Stainless steel hardware may bind together when tightening—It is recommended that you apply an anti-seize assembly lubricant to the threads of each bolt before assembly*
- *This installation requires two people*

Required tools

- Drill and drill bits (1/4", 5/16", 3/8")
- Standard wrench set
- Center punch or scribing tool
- Leveling tool
- C-clamps



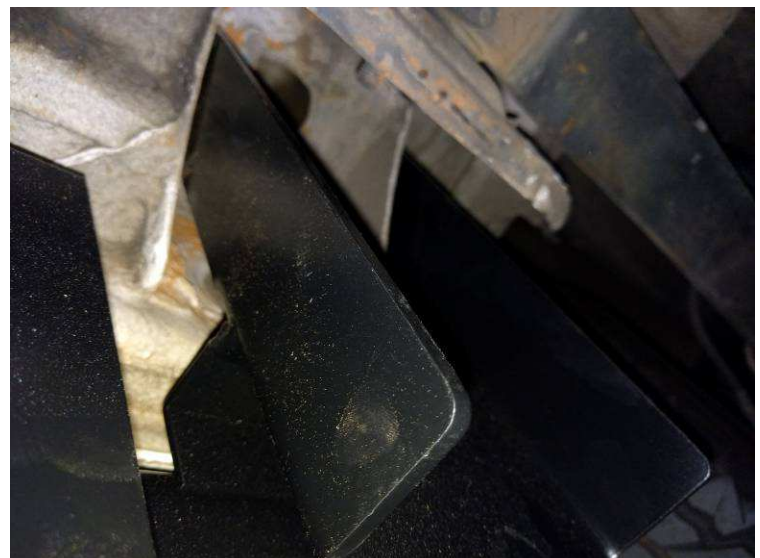
Included hardware

Quantity

- | | |
|--|----|
| • 70008 - 1/4-20 Nylock Nuts SS | 16 |
| • 70009 - 1/4 x 5/8 Washer SS (.03" Thick) | 32 |
| • 70039 - 1/4 x 7/8" Washer SS Fender | 32 |
| • 70060 - 1/4-20 x 1" Bolt, Button Head, Socket Cap, SS, | 16 |
| • 70194 – Self Tapping, 5/16x1" Bolt | 17 |
| • Mounting Shims | 2 |

Assembly instructions

1. Open the front door and pull up on the plastic step covers to see painted metal underneath
2. Note any wires that cross because you will be drilling through into this space
3. Lie on your back and hold the nerf bar up against the underside of the van so that the flat mounting surface in the front is held flat against the bottom face of the step. Due to some variance on the step of the Sprinter a shim may be needed between the mount and the bottom of the step.
4. To help you locate the nerf bar, the rear bracket slides up against the body in the rear. On some models the rear bracket on the passenger side may not be able to sandwich the body panel and will need to fit up against the backside of the body panel.
5. Have your partner check to see if the nerf bar step is level





6. Drill the hole for the back flange using a 1/4" drill bit so that one bolt may go all the way through the body.
7. On the front bracket hold the nerf bar up so the flat mounting surface is flat against the bottom of the van step; drill up and through the step, being careful of the wiring on the top of the step—drill two holes at least 2 inches apart and at an angle from each other
8. Bolt down through the step and bracket plate using the 1/4"x 1" bolts, two 1/4" washers per bolt, and 1/4" nylock nuts
9. Drill and bolt a second hole on the other half of the rear flange and body mount
10. Again put the 1/4"x 1" bolt through the hole with the washers on either side and a nylock nut.
11. Drill and install 1 more 1/4" x 1" bolt on both rear body mounts. The further apart you can get the bolts the better.
12. Fit step cover back on
13. Additional support
 - a. Drill (3) 3/16" pilot holes, through the flat back side of the Center Nerf Bar Brackets and into the sheet metal of the vehicle. 2 holes should be towards the top of the bracket, and 1 hole will be centered lower on the bracket
 - b. Use the provided self tapping screws to hold the center brackets to the sheet metal of the vehicle .