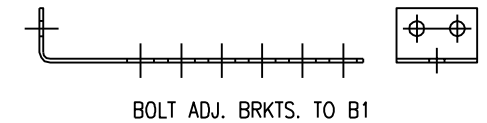
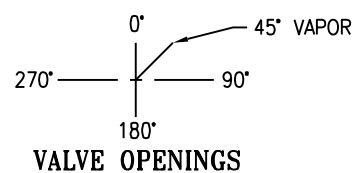
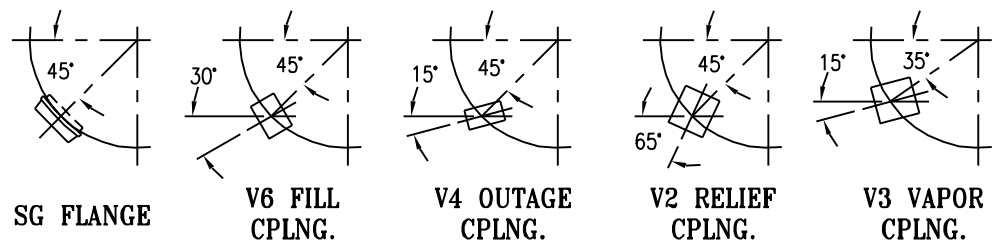
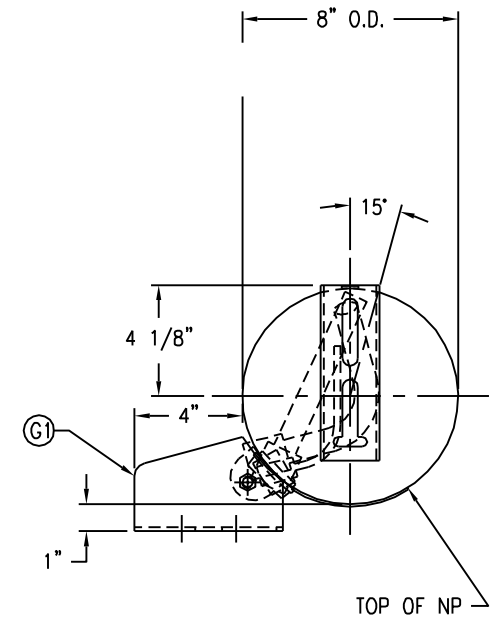
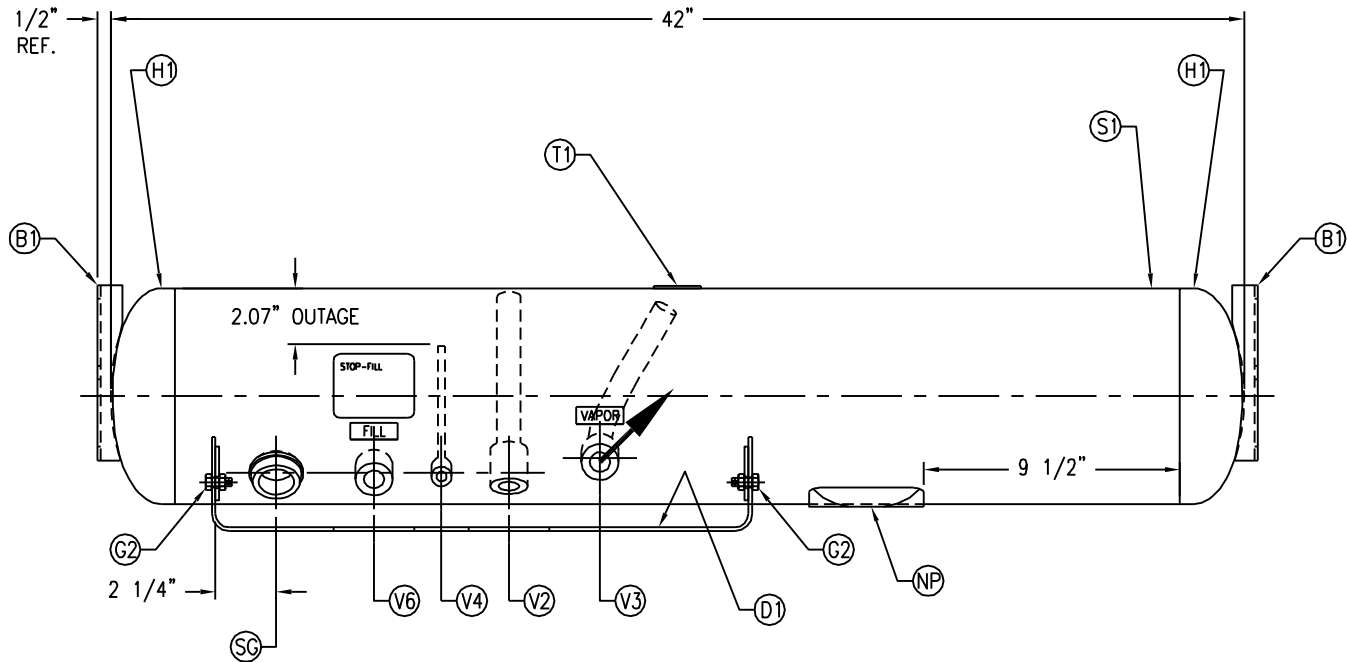


CODE/ADDENDA 2013 APPROVED DP
 RELEASED FOR PRODUCTION
 O.C. DATE



SPECIFICATIONS			
O.D. 8	LGTH. 42	SH.	
MAWP 312	PSI @ 650 °F	HD.	
RT- MDMT -20°F	@ 312 PSI	GAL. 8.4	S.A. 7.5
EXMT	TEST	WT. 51#	CU.FT. 1.1
XRAY	W	CORR ALW	SH HD
CRN F2191.1234567890		CODE: ASME SEC. VIII DIV. I,	
		LATEST EDITION & ADDENDA	
WELD DETAILS: M-1932			
STD. TOLERANCES (UNLESS OTHERWISE NOTED): M-2461			

MTEFRATN APPS\DWG\6000\

VAPOR APPLIANCE TANK

DRAWN BY SE	DATE	SCALE: NONE
APP. BY JD	DATE	DRAWING NO. 6811

SYM	DATE	BY	REVISION	APP	XREF	REV.	NOTES
B		EGB					1. THE 3" CUTOUT IN THE GUARD MUST BE CENTERED UNDER THE FILL COUPLING.
C		EGB		EGB			