

## **Ford Transit Light Bar** **INSTALLATION INSTRUCTIONS**

**Please read before beginning**

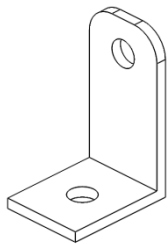
- *Stainless steel hardware may bind together when tightening—It is recommended that you apply an anti-seize assembly lubricant to the threads of each bolt before assembly*

**Required tools**

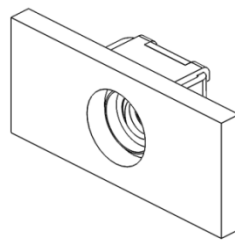
- Standard wrench set
- 3/16" Drill Bit with Drill
- Flat Head Screw Driver
- Dremel or Cut-Off Wheel
- Box Cutter
- Measuring Tape



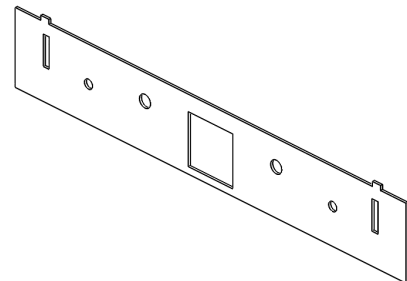
**Included Parts**



Attachment Bracket  
(Steel)



Attachment Bracket Nuts (Steel)



Cut Template

**Included hardware**

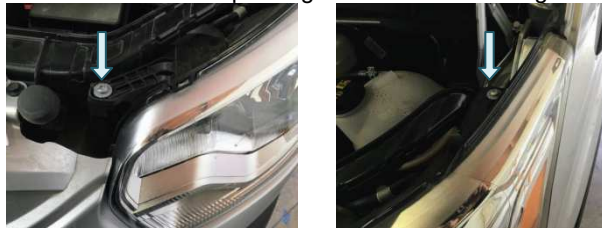
**Quantity**

• Attachment Bracket (Steel) .....	2
• Attachment Bracket Nuts (Steel) .....	2
• Plastic Cut Template .....	1
• 70124 M8 x 40mm .....	2
• 70027 3/8" Washer .....	8
• 70020 5/16" Washer, Stainless Steel.....	2
• 70247 3/8"-16 Acorn Nut, Stainless Steel .....	2
• 70248 3/8"-16 x 1.25" Button Head Bolt, Stainless Steel .....	4
• 70249 3/8"-16 x 1.75" Button Head Bolt, Stainless Steel .....	2
• 70708 3/8" Lock Washer .....	2
• 70024 3/8"-16 Nylon-Locking Nut .....	2
• 70111 5/16" Lock Washer .....	2

**Installation Instructions**

**Stock Bumper Removal**

1. Open hood and remove head lights. There are two (2) T30 Torx bolts holding in each head light in place that must be removed (reference Figure 1). Gently pull light forward (away from vehicle) and up to dislodge the light, being careful to not pull the attached electronics. Unclip wiring harness once dislodged.



1a – Forward Bolt

1b – Rear Bolt

**Figure 1: Bolts Securing Headlights**

2. Disconnect wire connections running to each of the head lights and turn signals. They are color coded for easy assembly later.
3. Underneath the headlights, remove the two (2) T25 Torx bolts holding the outside of the bumper to the fender flare (Figure 2).



**Figure 2: Bolts Underneath the Headlights**

4. Remove the plastic clips holding on the fender flare on the inside of each wheel-well (Figure 3). There's no need to remove the torx bolt at the bottom of the fender.



**Figure 3: Fender Flare Plastic Rivets**

5. Gently pull fender flares away and off of the vehicle to expose the plastic front bumper (Figure 4a). Remove

the fender retaining bolt (10mm) to allow the bumper to be pulled away from the vehicle.

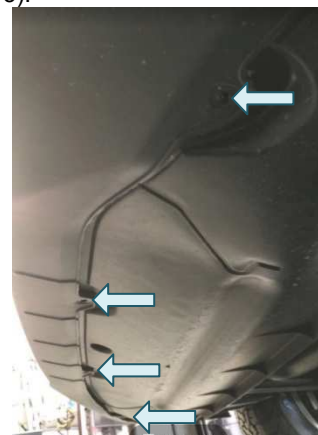


4a – Fender Flare Tabs

4b – Fender Retaining Bolt

**Figure 4: Fender Flare Removal**

6. Unbolt the four (4) 10mm bolts connecting the plastic front bumper to the plastic under carriage (reference Figure 5).



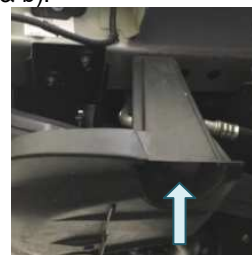
**Figure 5: Plastic Under Carriage Forward Bolts**

7. Unclip the plastic rivet holding a hose above the undercarriage from below (Figure 6).



**Figure 6: Plastic Rivet Holding on Engine Hose (view from above)**

8. Unbolt the rear bolts of the plastic under carriage and remove carriage from the vehicle (reference Figure 7a & b).



7a – Access to Rear Bolts



7b – Rear Bolts

**Figure 7: Rear Bolt Removal for Undercarriage**

9. Remove the license plate holder by drilling out the rivets attaching the holder to the front bumper.
10. Unbolt the two (2) 13mm bolts attaching the front bumper to the sub-frame underneath (Figure 8).



Figure 8: Attachment Bolts to Sub Frame

11. Gently pry plastic front bumper away from vehicle's front grill with a plastic pry bar or tape-covered flathead screwdriver (Figure 9). Start from each fender and work to the center, removing the center last.



Figure 9: Prying Front Bumper from Grille

12. Gently, but firmly pull the bumper directly away from front of vehicle to remove the bumper from the vehicle (Figure 10).



Figure 10: Front Bumper Removal

### Light Bar Installation

13. Insert the attachment bracket nuts behind the front bumper sub-frame, aligning them with the intended holes (Reference Figure 11 & 12).

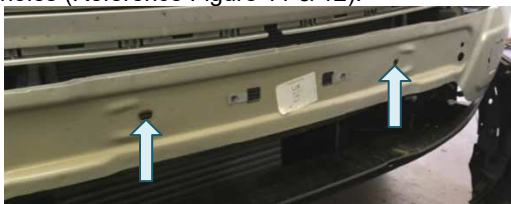


Figure 11: Holes to be Used for Installation



Figure 12: Attachment Bracket Holes Through Sub-Frame (View from Back of Sub-Frame)

14. Attach the steel attachment bracket using the M8 hex head bolt, 5/16 lock washer, and 5/16 washer (reference Figure 13). DO NOT tight hardware yet, first align with light bar.



Figure 13: Attachment Brackets Attached to Sub-Frame

15. Align steel brackets to desired position by holding up the Aluminess light bar to the vehicle and tighten bracket bolts into place.
  - a. For safety, have another person hold the light bar while aligning and tightening the bolts through the frame to ease installation and help prevent damage.
16. Align the provided cut template to the stock plastic front bumper using the two bolts in the front of the bumper as reference points (Arrows in Figure 14).

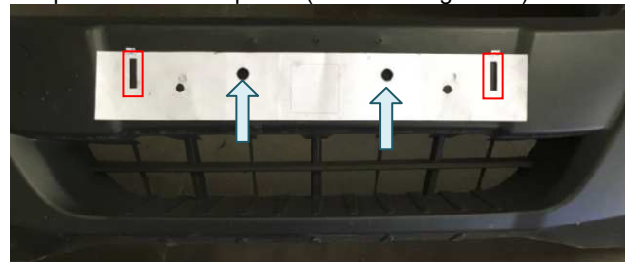


Figure 14: Cut Template on Stock Bumper

17. Mark the location of the rectangular holes required for the brackets to protrude through (Rectangles in Figure 14).
18. Cut the plastic bumper using the marked locations as guidelines. A dremel or cut-off wheel can be used for the long sides and a box cutter can complete the rectangle.
  - a. MEASURE TWICE → CUT ONCE!
19. Using the same cut template, align it underneath the lower, black bumper sub-frame by inserting the rectangular protrusions of the template through the holes on the front of the black sub-frame (Figure 15).



**Figure 15: Holes Cut into Lower Sub-Frame**

20. Mark the position of the necessary through-holes on the **bottom** of the black sub-frame using the correct holes from the template.

b. MEASURE TWICE → DRILL ONCE!

NOTE: To further ensure proper alignment of bottom holes through the sub-frame, temporarily install the light bar onto the upper brackets and verify alignment of marked location with lower attachment holes in the light bar (Shown in Figure 16).



**Figure 16: Temporarily Install to Verify Alignment of Lower Attachment**

21. After verification, drill the holes in the marked location through the black sub-frame from underneath the vehicle (See Figure 17).



**Figure 17: Holes Drilled Into Lower Sub-Frame**

22. Fit the plastic bumper back onto the vehicle using the plastic attachment tabs on the grille and the two (2) 13mm bolts in the front for alignment.
23. Temporarily attach light bar to steel brackets on upper sub-frame bumper with provided 3/8" hardware. Confirm alignment of holes on bottom black sub-frame through plastic bumper to Aluminess light bar (one hand on newly drilled hole and the other hand on the lower attachment tab of the light bar).
24. Once the position on the black sub-frame has been confirmed, remove the Aluminess light bar. Drill through the plastic bumper from underneath using the hole drilled through sub-frame as a template (Figure 18).



**Figure 18: Hole Drilled Through Lower Plastic Stock Bumper**

25. Reattach the light bar onto the vehicle and secure using provided 3/8" hardware in upper and lower attachment points. Be sure to include bolt lubrication and lock washers during final tightening.
26. Re-attach the plastic undercarriage using the four (4) 10mm bolts underneath and the two (2) 10mm onto the frame (Figures 5 & 7). Re-insert the plastic rivet through the engine hose connection (Figure 6).
27. Re-install all the bolts underneath the headlights attaching the front bumper at the wheel wells (Figure 2).
28. Re-install the headlights by attaching the wiring harness first and re-nesting the headlight back into place (Figure 1).
29. Reinstall fender flares and all plastic tabs (Figure 3 & 4).
30. Close the hood.
31. Enjoy your new Aluminess Light Bar!

