

# Front Receiver Installation Instructions

P/N 210513: 2019+ Mercedes Sprinter Front Receiver + Winch Mount

**WARNING:** Use extreme caution while winching - it can be very dangerous and every situation needs to be evaluated properly. The winchline can rub at extreme winching angles - use appropriate tools and techniques to avoid winchline damage.

**NOTE: THIS PRODUCT IS NOT COMPATIBLE WITH THE SPRINTER 3500 DUALY**



## Before you begin:

- *Collision Prevention, DISTRONIC (adaptive cruise control), and/or front parking sensor systems may be impaired if accessories are installed into the front receiver.*
- *If your vehicle has the collision prevention sensor AND a winch is installed into the winch mounting location, an Aluminess light bar (PN 210510) must be installed to relocate the sensor.*
- *Stainless steel hardware may bind together when tightening — apply an anti-seize assembly lubricant to the threads of each bolt before assembly*

## Required Tools:

- Standard and metric wrench set
- Standard and metric socket set
- Flat head screwdriver
- Hammer
- Putty knife
- Razor blade or box cutter
- Painter’s masking tape

## Included Hardware:

<b>P/N</b>	<b>Description</b>	<b>Quantity</b>
70124	M8-1.25 x 40mm Bolt	10
70101	M8-1.25 Nut	8
70111	5/16" SS Washer	10
70020	5/16" Split Locking Washer	18
70036	½"-13 x 1-½" Hex Head Bolt, Grade 8	4
70103	½"-13 x 2 ½" Hex Head Screw, Grade 8	4
70035	½" Washer	16
70033	½"-13 Nylock Nut	8
70029	3/8"-16 x 1-1/4" Hex Head Bolt, SS	2
70028	3/8" ID SS Washer	4
70029	3/8"-16 Nylon-Locking Nut	2
70060	¼"-20 x 1" Button Head Bolt, SS	4
70014	¼"-20 x 1-1/4" Button Head Bolt, SS	4
70008	¼"-20 Nylock Nuts, SS	8
70009	¼" Flat Washers, SS	16
70246	Antiseize Bolt Lubricant Packet, 2g	1

**Additional Parts:**

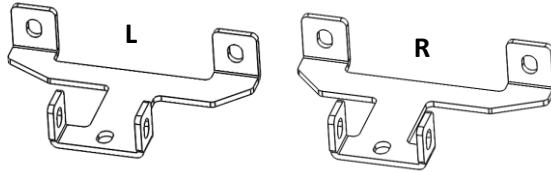
**Description**

**Quantity**

**Picture**

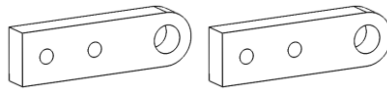
Mounting Brackets

2 ea



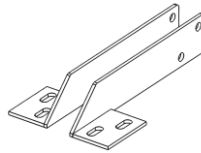
Tow Hooks, Steel

2 ea



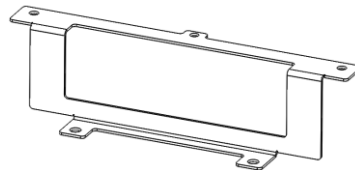
Light Bar Straps

2 ea



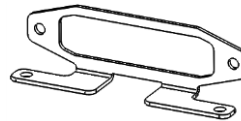
Winch Replacement Bracket

1 ea



Bolt-On Fairlead Plate

1 ea



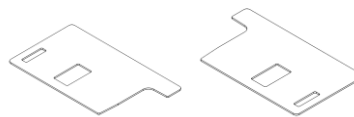
Euro Center Cut Template  
(PN 301167)

1 ea



Euro Side Cut Templates  
(PN 301166)

2 ea  
(L & R)



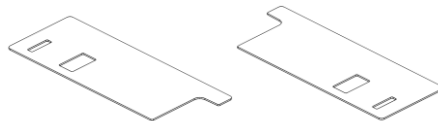
US Center Cut Template  
(PN 301186)

1 ea



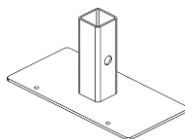
US Side Cut Templates  
(PN 301185)

2 ea  
(L & R)



License Plate Holder

1 ea



**Stock Bumper Removal:**

1. Open and secure the hood.
2. Remove the three (3) torx screws across the top of the grille; reference Figure 1.



Figure 1: Grille Screws

3. Pull the grille slightly away from the vehicle and unclip the grille in the six (6) indicated locations (see Figure 2 & 3). Once all tabs have been released, the grille can be removed.



Figure 2: Grille Tab Locations



Figure 3: Grille Tab Close Up

4. Remove the two (2) torx bolts near the top of the stock bumper seen with the grille removed. Reference Figure 4.

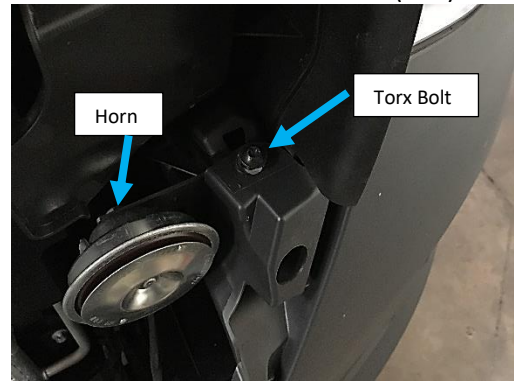


Figure 4: Torx Bolts Near Top of Stock Bumper

5. Remove the two (2) plastic caps on the front bumper step to reveal two (2) torx bolts. Do not yet remove torx bolts (reference Figure 5 & 6).



Figure 5: Plastic Cap Location



Figure 6: Front Bumper Step with Plastic Cap Removed

6. Remove the six (6) plastic rivets on the inside of each fender well. Gently pull the center of the rivet out, then remove entire rivet. Reference Figures 7-9.

*PRO TIP: Access to the rivets is much easier by turning the vehicle's wheels.*



Figure 7: Plastic Rivets on the Inside of the Wheel Well



Figure 8: Plastic Rivets on Underside of Bumper



Figure 9: Example of the Plastic Rivet

7. Pull gently on the corner of the plastic bumper directly away from the vehicle. Start in the corner nearest the wheel well working towards the center. Repeat for other side of vehicle. Reference Figure 10.



Figure 10: Removing Plastic Bumper

8. Remove the final two (2) torx bolt holding on the stock bumper on the bumper step as shown in Figure 6.
9. Remove stock front bumper by pulling directly away from vehicle being sure to disconnect any sensors that are attached.
10. Remove the horn (seen in Figure 4).
11. Remove the plastic shrouds on either side of the radiator by depressing the indicated tab and sliding each shroud up. Repeat for both driver and passenger sides. Reference Figure 11.

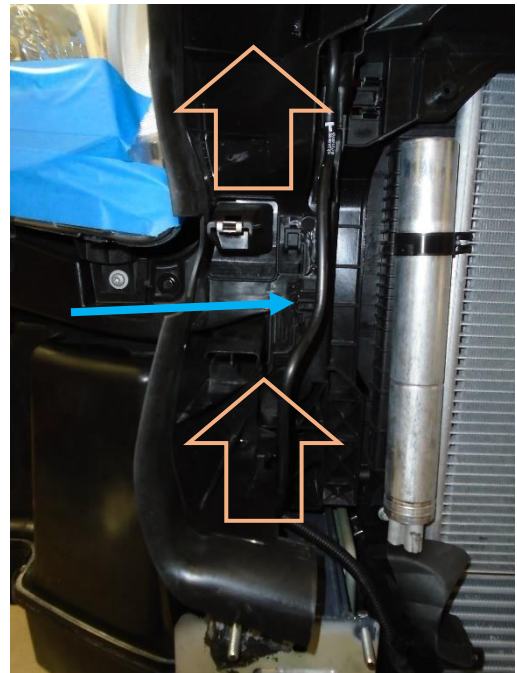


Figure 11: Plastic Shroud Removal

12. Remove the collision prevention sensor plastic bracket by unscrewing the two (2) torx bolts near the top of the radiator.



13. Remove the sensor from the plastic bracket.
14. Remove the eight (8) bolts holding the stock steel bumper in place using a 13mm wrench as shown in Figure 12. CAUTION: Once all the bolts are removed, the bumper may fall if not properly supported.



Figure 12: Four (4) of the Frame Bolts Holding the Stock Steel Bumper to the Vehicle.

15. Remove the stock steel bumper using a putty knife and a hammer if the bumper does not come loose after removing the bolts in the previous step. The frame sealant may cause the steel bumper to stick to the frame. See Figure 13. CAUTION: once the seal is broken, the bumper may fall if not properly supported.

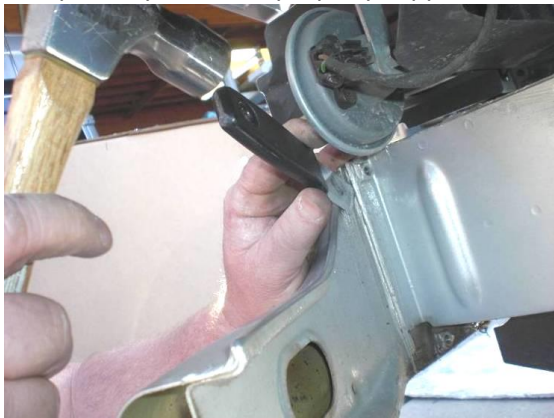


Figure 13: Releasing the Stock Steel Bumper from the Vehicle Using a Putty Knife and Hammer

16. Lower the air flow skirt by unclipping each side and pressing the skirt down as shown in Figure 14-15. Some of the hoses may need to be adjusted.

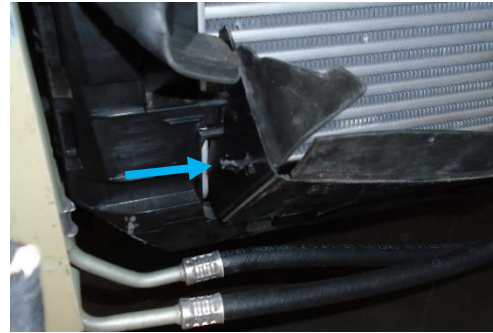


Figure 14: Air Flow Skirt Clip

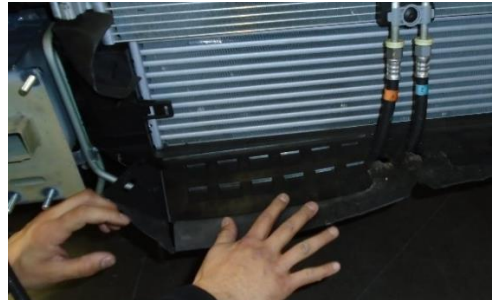


Figure 15: Air Flow Skirt Pressed Down

#### **Front Receiver Installation:**

17. Install the eight (8) provided M8 bolts with eight (8) split washers through the frame, from back to front, creating studs for the receiver to mount onto. Reference Figure 16.

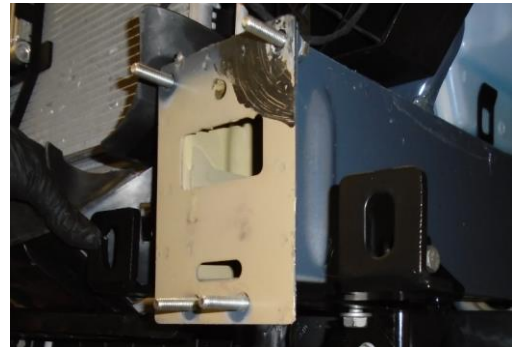


Figure 16: M8 Bolts Installed

18. Remove the three (3) bolts holding on each of the black steel crossmember underneath the radiator. (see Figure 17).

*PRO TIP: Only uninstall one side at a time to make re-installation easier.*

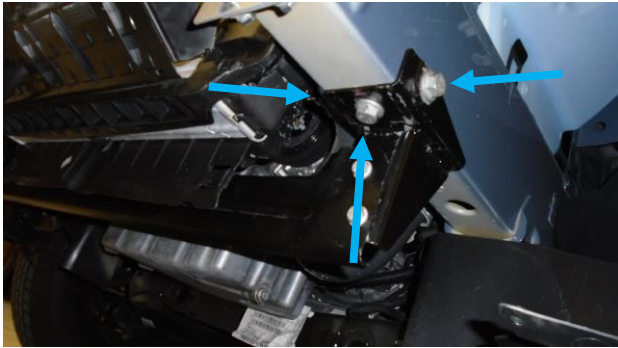


Figure 17: Engine Crossmember Bracket Factory Bolts (Driver Side Shown)

19. Install the steel mounting bracket (see "Additional Parts" section) on the correct side of the vehicle **over** each of the crossmember brackets.
20. Reinstall the factory hardware through the supplied mounting brackets and through the factory crossmember brackets. Do not tighten hardware yet; allow the mounting bracket some play until entire bumper is mounted. Reference Figure 18.

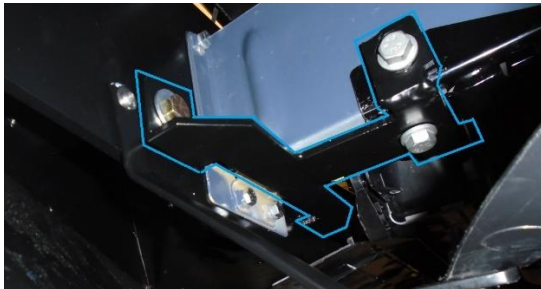


Figure 18: Installed Mounting Bracket

21. Press the air flow skirt down past the mounting brackets and adjust the hoses as needed.
22. Slide your Aluminess Front Receiver onto the (8) M8 bolts on the frame. Ensure the air flow skirt is resting below and behind the front receiver assembly.

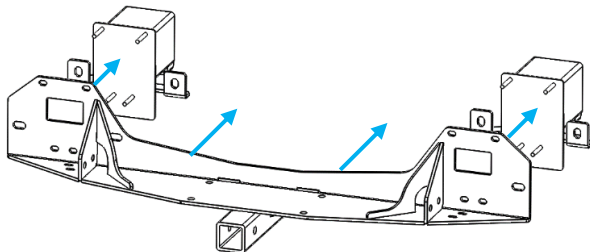


Figure 19: Slide receiver assembly onto frame mounts

23. Install washer, split washer, and M8 nuts onto the eight (8) pre-installed bolts.
24. Tighten two (2) of the M8 bolts, one (1) on each side, to hold the receiver in desired position.
25. Install ½"-13 bolts with washers through the mounting brackets and through the back of the receiver. Install a washer and nut onto each bolt.
26. Adjust receiver into final position.
27. Tighten all hardware:
  - a. ½"-13 bolts
  - b. M8 bolts
  - c. Factory bolts into frame at crossmember.

### Winch Installation

*(skip this if you are not installing a winch on your van)*

28. Install tow hooks into your front receiver using the ½"-13 hardware provided, along with accompanying nuts and washers.

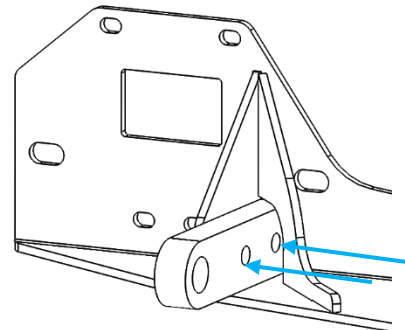


Figure 20: Tow Hook Installation

29. Install your winch following the manufacturer's instructions. Be sure to use the provided bolt-on fairlead plate as shown below.

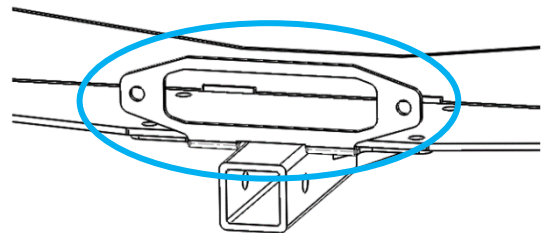


Figure 21: Bolt On Fairlead Plate

**NOTE:** An Aluminess Light Bar must be installed if your vehicle has the front collision prevention sensor.

30. With the winch already installed, install the fairlead provided with your winch.

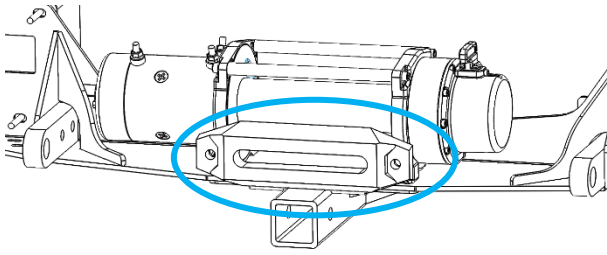


Figure 22: Bolt On Fairlead Plate

**Front Receiver Without Winch**

(skip this if you have installed a winch)

31. With the Front Receiver bolted to the frame, install the provided Winch Replacement Bracket with 3/8"-16 bolts and accompanying nuts and washers.

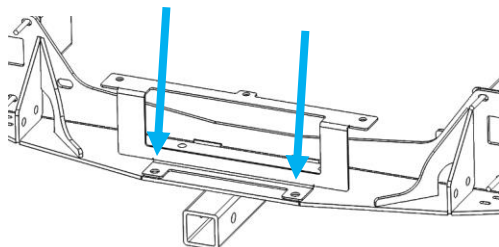


Figure 23: Winch Replacement Bracket

**Front Receiver with Winch and Aluminess Light Bar**

(skip this if you do not have an Aluminess Light Bar AND a winch)

32. Install the provided angle straps using 1/4"-20 x 1" bolts and accompanying nuts and washers.

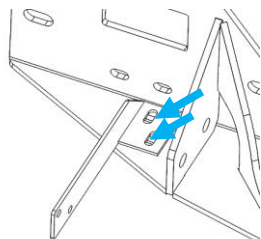
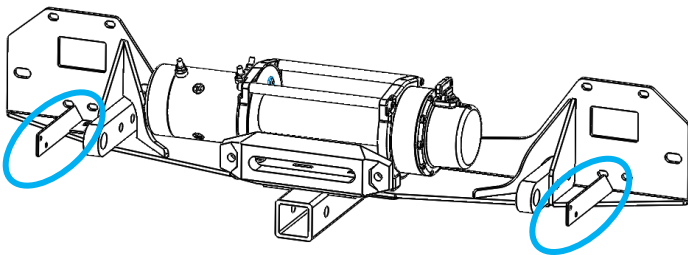


Figure 24: Light Bar angle straps

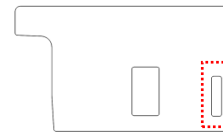
33. Apply the cut templates to the front bumper as shown in Figure 26. Use the license plate mount to align stickers onto the bumper. Your vehicle will have either a long, narrow European license plate, or the short, wide US license plate mount. Use the corresponding cut templates.



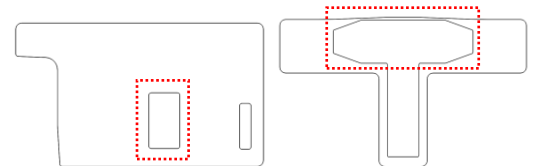
Figure 25: Cut Template Locations (Euro shown)

34. Using the cut templates, cut through the bumper along printed lines.

- a. NOTE: the outer most rectangles on the side templates are only used in conjunction with the light bar.



- b. NOTE: The inner rectangles on the side templates and octagonal shape on the middle template are only used in conjunction with the winch/tow hooks.



35. Reinstall the bumper onto the vehicle.

36. *Light bar only:* Use the angle straps as a guide to drill 1/4" holes through the vertical blades. Bolt the light bar to the angle straps using 1/4"-20 x 1-1/4" bolts and accompanying nuts and washers.

37. Your new Aluminess Front Receiver + Winch Mount is now installed! Enjoy!