

# EcoFlow Wave 2

**Industries most POWERFUL and compact portable AC  
providing comfort anywhere & anytime**



# Product Introduction

---

# Product Overview



## EcoFlow Wave 2

- **The most powerful portable AC** with cooling and heating.
- **The most compact AC.** No installation, No drainage in cooling mode.
- Designed for camping and van life, power for the **whole night** and **stay quiet**.
- **Multi-recharging approaches:** Interchangeable battery, AC/solar/car/power station.



# 01 World's most powerful cooling & heating

5  
Minutes

To drop 50°F  
Or raise 59°F\*

8  
Hours\*\*

Maximum  
running time

48  
dB

Minimum  
noise level

# 02 World's most compact AC

- Only 14.5kg, as light as a Delta2
- No installation, no drainage, fits anywhere
- Interchangeable battery, with 4 recharging ways

• EcoFlow Wave2 can drop 50°F from 95°F for 10m<sup>3</sup> in 5 mins with 5100 BTU in cooling, and raise 59°F from 68°F for 10m<sup>3</sup> in 5 mins with 6100 BTU in heating.

\*\* Runtime under cooling eco mode.

# 01

## World's most powerful cooling & heating

### Cool and heat in the fastest speed

- 5100 BTU in cooling, 6100 BTU in heating enabled by *EcoFlow tailor-made compressor*

### Runs longer and quieter

- Multiple modes with app control enabled by *EcoFlow advanced software algorithm*

MAX

#### Fast Mode

- To go cooled/heated fastest



#### Sleeping Mode

- To go most quiet as 48db



#### Eco Mode

- To stay longest as 8hrs\*



\* Runtime under cooling eco mode.

# World's most compact and portable AC

## Designed to be small & compact

- 20% smaller than Wave1 while 27% more powerful

## No installation, No drainage

- Fit any space, with air duct adapters available

## Interchangeable battery with 4 ways to charge

- Fast recharged by AC/solar/car/power station



EcoFlow Wave 2 + Add-on battery

Anywhere, anytime use  
No installation,  
No drainage\*

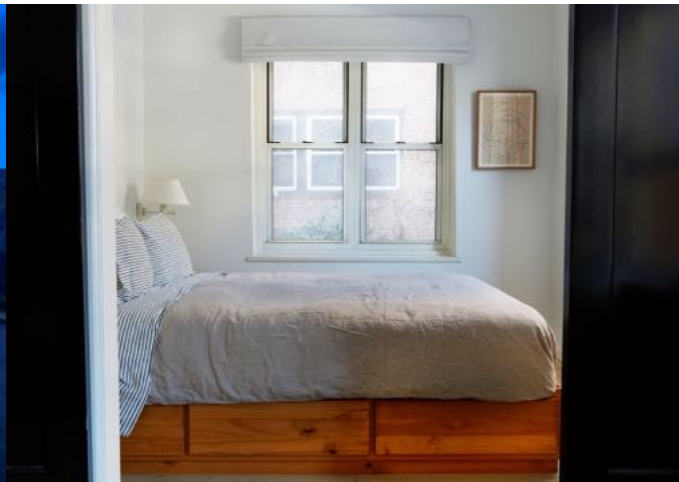
Tailor-made for pick and go to...



Off-grid houses



RV/Vans/Trucks



Room/Compact spaces



Outdoors/Tents

\* In cooling mode, water can be released as vapor, no drainage needed. While using heating mode, users need to drain water through a pipe.

Anywhere, anytime use  
No installation,  
No drainage\*



Multiple accessory solutions such as air duct adapters and vent board to fit any space.



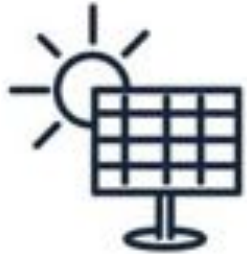
In cooling mode, water can be released as vapor, no drainage needed\*.

\* While using heating mode, users still need to drain water through a pipe.



# Anywhere, anytime recharge

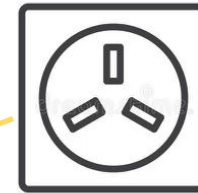
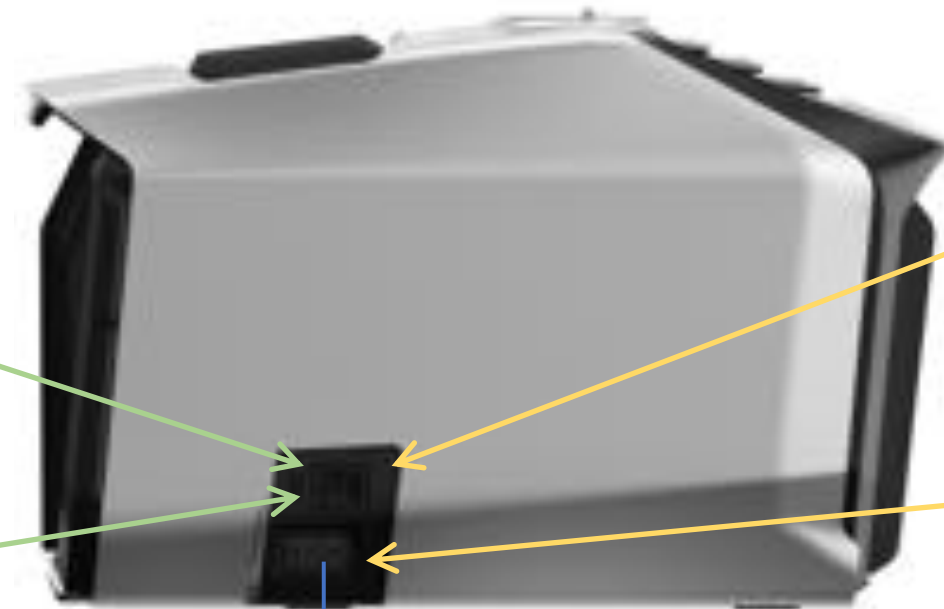
## Interchangeable battery with 4 charging methods



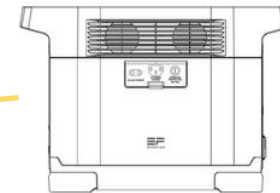
Solar Panel  
Max. input 400W  
Via XT60 Port



Car outlet  
Max. input 200W  
Via XT60 Port

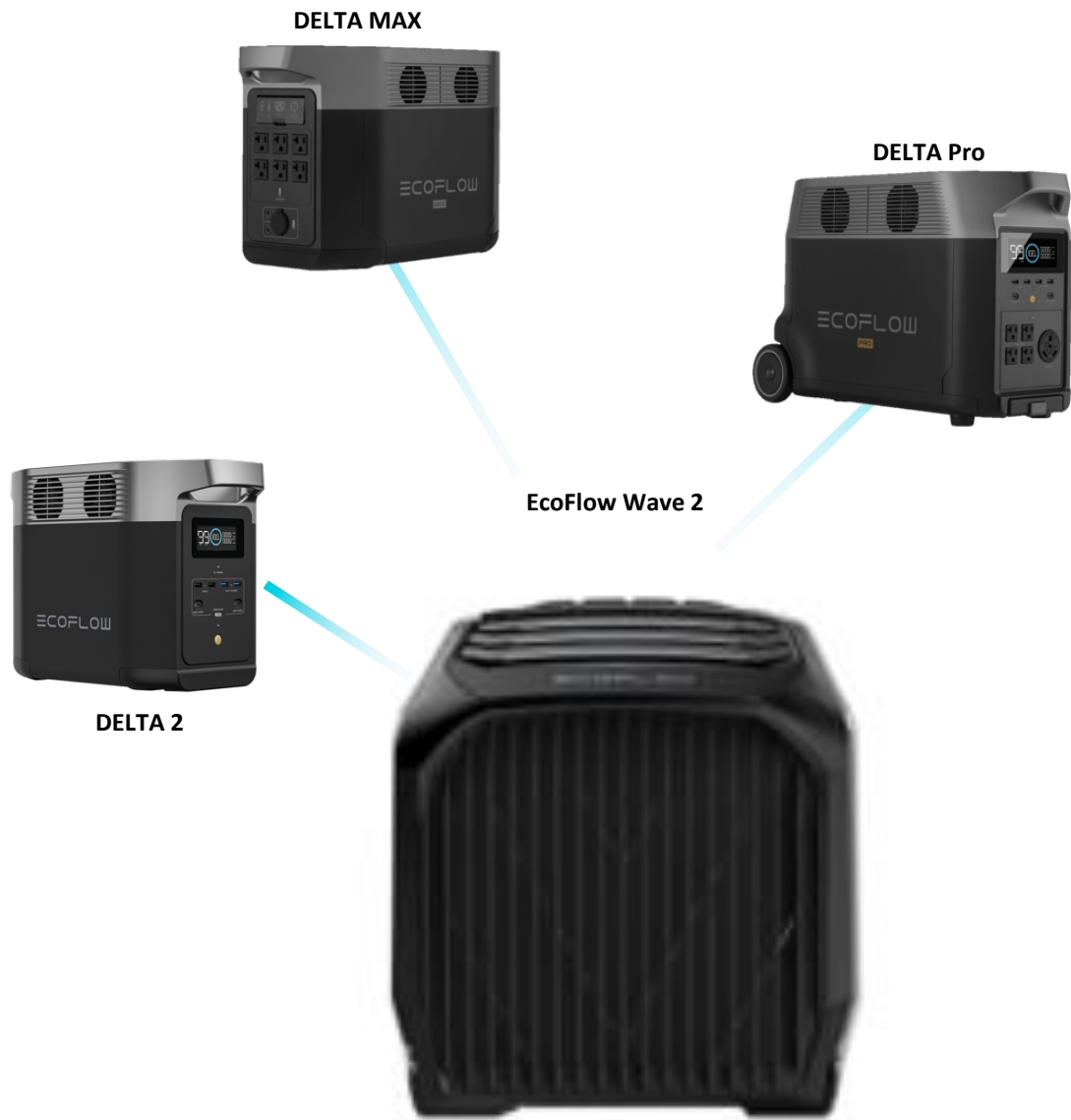


Wall socket  
Max. input 820W  
Via AC Socket



Power Station  
Max. input 800W  
Via DC Socket

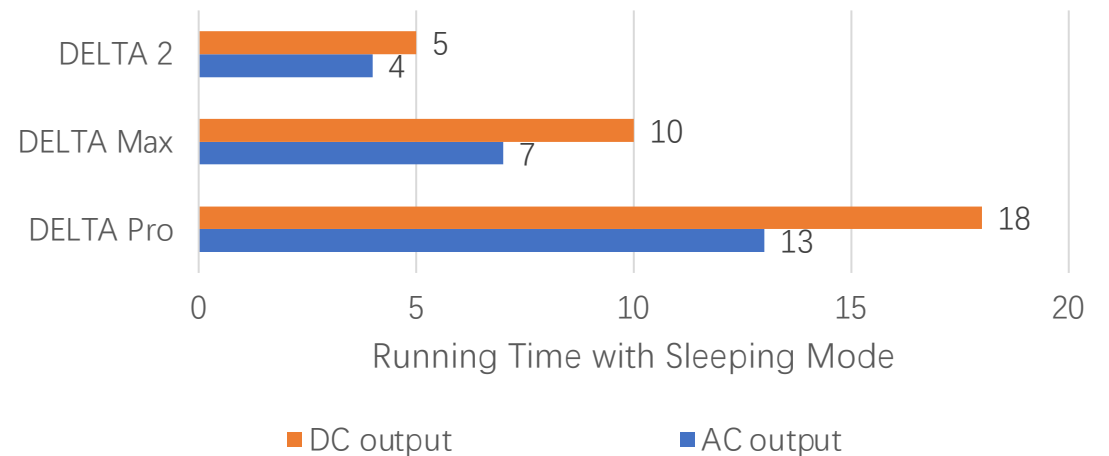
Add-on battery connector



# Better in EcoFlow Ecosystem Runs even longer with EcoFlow power station

\*DC output only supports DELTA Max / Pro / 2 and its extra batteries

**EcoFlow Wave2 can go even further for running time up to 18 hrs with EcoFlow power station.**



\*Testing results using the Sleeping Mode of EcoFlow Wave 2.

# EcoFlow Wave2 – more powerful and compact

	<b>Black Decker</b> (traditional AC with cable)	<b>Zero Breeze Mark 2</b> (top-selling competitor)	<b>EcoFlow Wave 2</b>
<b>Image</b>			
<b>Cooling capacity</b>	8000 BTU	2300 BTU	5100 BTU
<b>Heating capacity</b>	No	No	6100 BTU
<b>Max. running time</b>	/	6 hrs	8 hrs*
<b>Min. noise level</b>	54dB	52dB	48dB
<b>Weight</b>	24 Kg	7.5 Kg	14.5 Kg
<b>Installation-free</b>	No	Depends	Yes
<b>Power method</b>	1	4	5

\* Runtime will be updated upon further tests.

# Appendix - Specifications



Model Name	<b>EcoFlow Wave 2</b>
Cooling Power	5100 BTU / 1500 W
Heating Power	6100 BTU / 1800 W
Cooling Area	≤ 10m <sup>2</sup>
Mode	Cooling mode/Heating mode/Fan mode Fast mode/Sleeping mode/Eco mode
Add-on battery Charging Method	AC outlet, power station, Car outlet, Solar Panel
Rated Running Power	AC:560W / DC: 505W
Noise Level	48 ~ 56dB
Waterproof Rating	IPX4
App	✓
Dimensions	518*297*336mm
Weight	Approx. 14.5 Kg

# Appendix - Specifications

---



Model Name	<b>EcoFlow Wave 2 add-on battery</b>
Capacity	1159Wh
Battery Chemistry	NCM
Battery Life Cycle	800 cycles to 80%+ capacity
Max. Output Power	820W
Dimensions	515*272*92 mm
Weight	Approx. 7.8 Kg

# Appendix - Product Overview

---



EcoFlow Wave 2  
MSRP TBD



EcoFlow Wave 2 + Add-on Battery  
MSRP TBD



Add-on Battery  
MSRP TBD

# Appendix - DC output with EcoFlow power station



DELTA 2



DELTA MAX



DELTA Pro



Via  
XT150 to XT150 Cable\*



Via  
DELTA Pro to Smart Generator Adaptor  
+  
XT150 to XT150 Cable\*



EcoFlow Wave 2

\*Cable comes with "Wave2 + DELTA" bundle.

**Thank You**