



Installation Instructions Van: VNRA13PROM55

DODGE RAM PROMASTER 136" WHEELBASE 2014-Current

TOOLS REQUIRED

Adjustable wrench (that opens to about 1"), **1/2" open end wrench**, **Phillips screwdriver**,
3/8" socket, **7/16" socket**, **7/32" Allen wrench**

Watch short installation videos at www.decked.com/video | Register your system at www.decked.com/warranty

follow us:



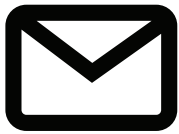
VERSION 1

DECKED.COM | SERVICE@DECKED.COM | 208.806.0251

▼ **THIS IS A TEST - Are you reading these BEFORE you install DECKED?** ▼

- Parts are labeled by step sequence.
- The **rear** ammo cans have flat bottoms.
- The **front** ammo cans are narrow at the bottom.
- Get bolts good and tight, **BUT DON'T USE POWER TOOLS UNLESS REQUESTED IN INSTRUCTIONS.**
- You'll need a buddy for exactly two steps. *Don't go super-human on us and hurt yourself!*

Need Help? Watch our detailed installation video or give us a call. We're happy to troubleshoot any issues.



SERVICE@DECKED.COM



208.806.0251



**WATCH INSTALLATION VIDEOS:
DECKED.COM/VIDEO**

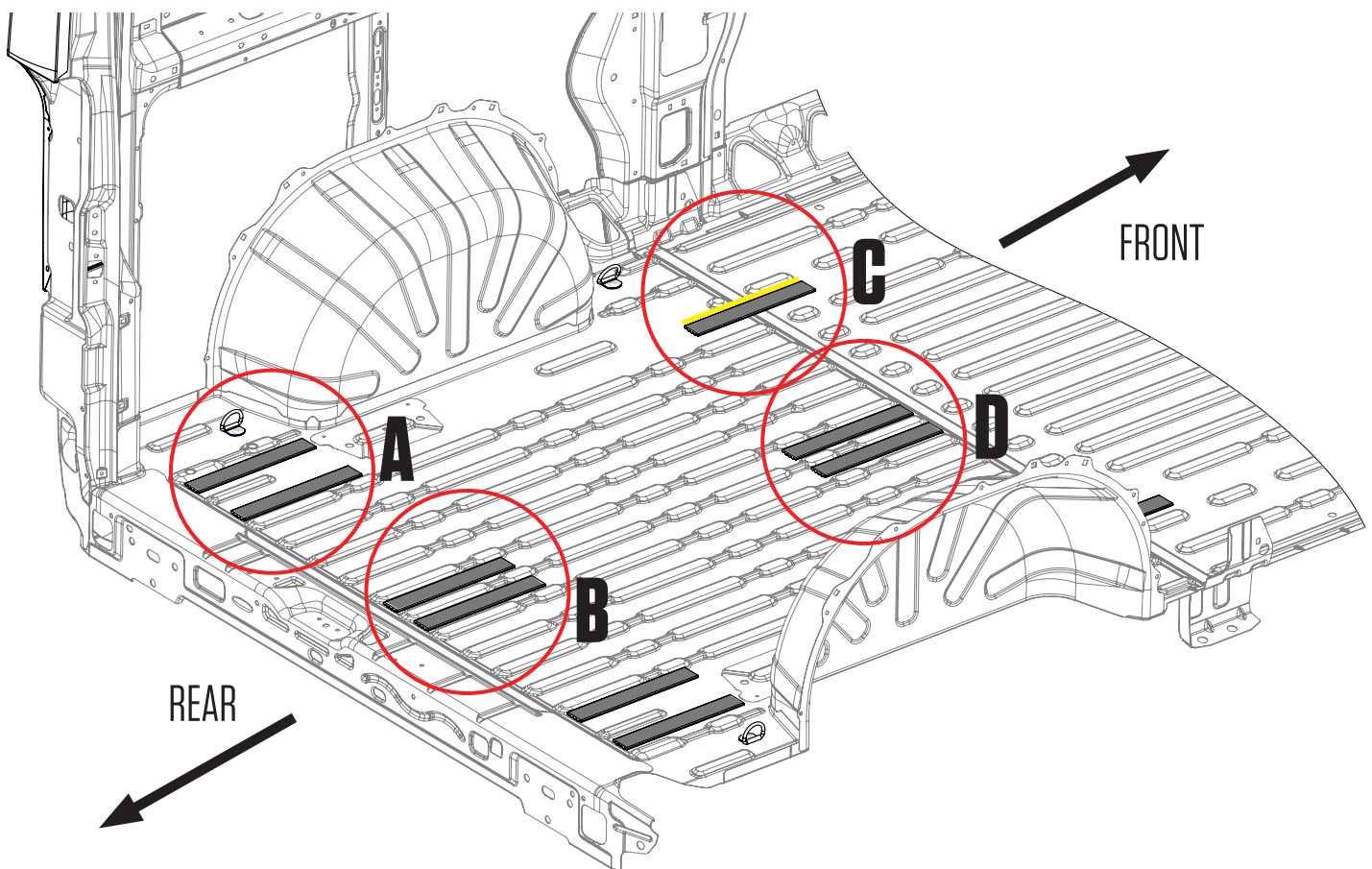
PREPARE VAN: INSTALL SHIMS

There are 10 shims provided:

- 1) If your vehicle is equipped with a rubber floor mat in the cargo area, you will need to remove the screws securing the plastic trim pieces at the base of the rear and side door openings, and remove and set aside the plastic trim pieces. **If no mat is installed, follow step 3 on this page.**
- 2) At the rear door opening, lift the floor mat and fold it forward so it is clear of the floor area where the shims will be placed.
- 3) Using the information in the respective circular detail views on the next page:
 - a) Clean the surfaces where the shims will be located.
 - b) Remove the layer of tape on the bottom of the shim to expose the adhesive surface.
 - c) Place the shim and apply with pressure.

NOTE: Repeat steps A and C on passenger side.

- 4) When all shims are placed, roll the rubber mat back to cover the floor.
- 5) Reinstall the plastic side and rear door trim pieces and secure with screws.

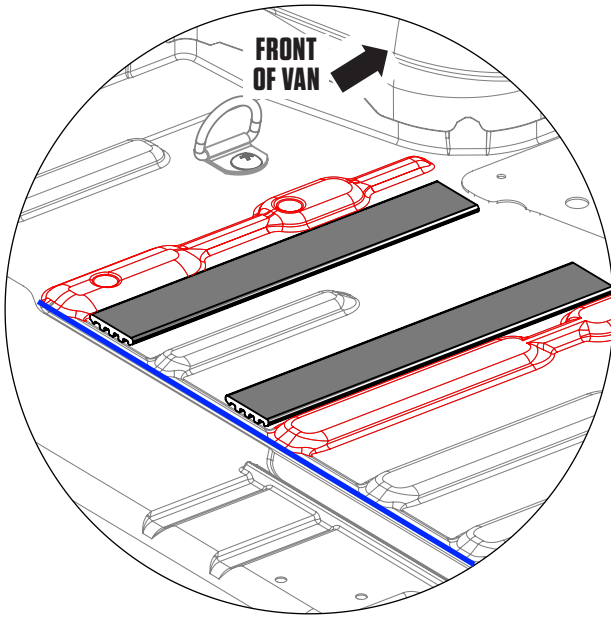


PREPARE VAN: INSTALL SHIMS

DETAILED VIEW

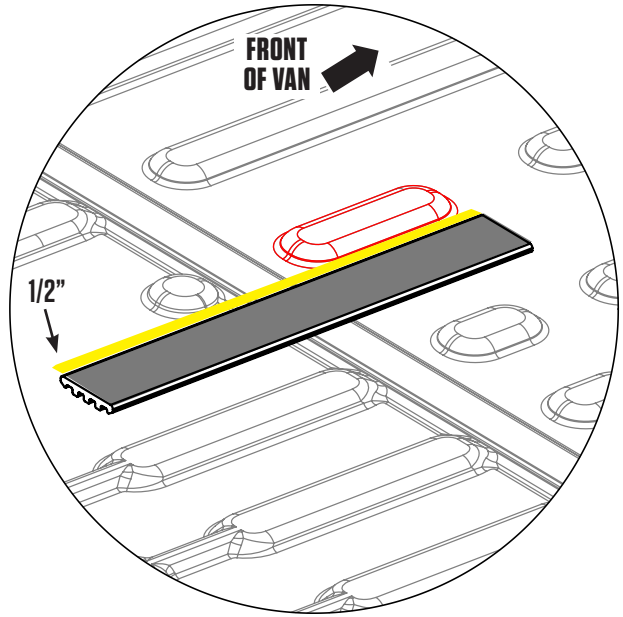
DETAIL A

Make sure shims are adjacent to beads in floor (red). Align rear of shims adjacent to transverse bead in floor (blue line). Repeat on passenger side.



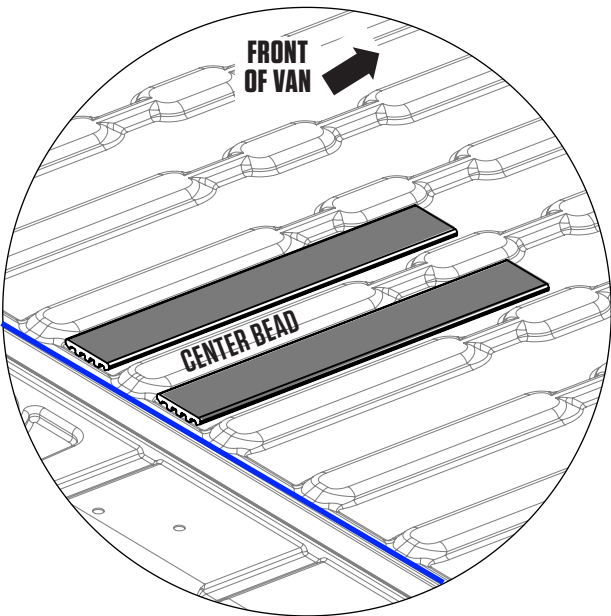
DETAIL C

Align front of shim with bead in floor (red). Place shim 1/2" from bead. Repeat on passenger side.



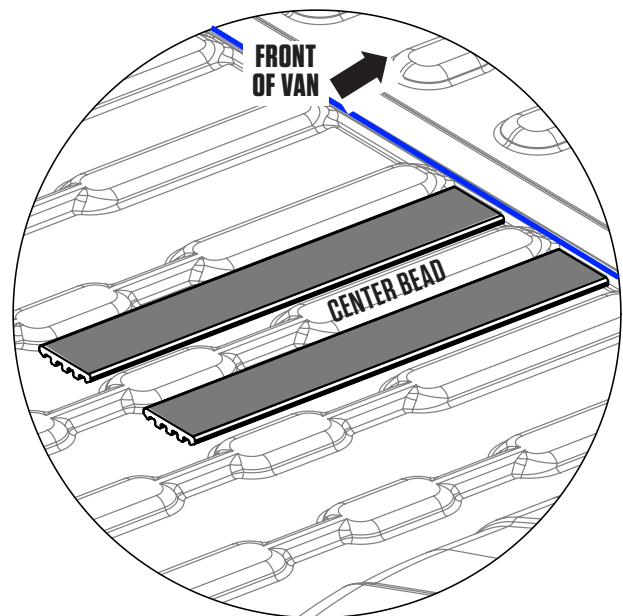
DETAIL B

Align rear of shims adjacent to transverse bead in floor (blue line).



DETAIL D

Align front end of shims adjacent to transverse bead in floor (blue line).



STEP 1: DRIVER SIDE DECK ASSEMBLY

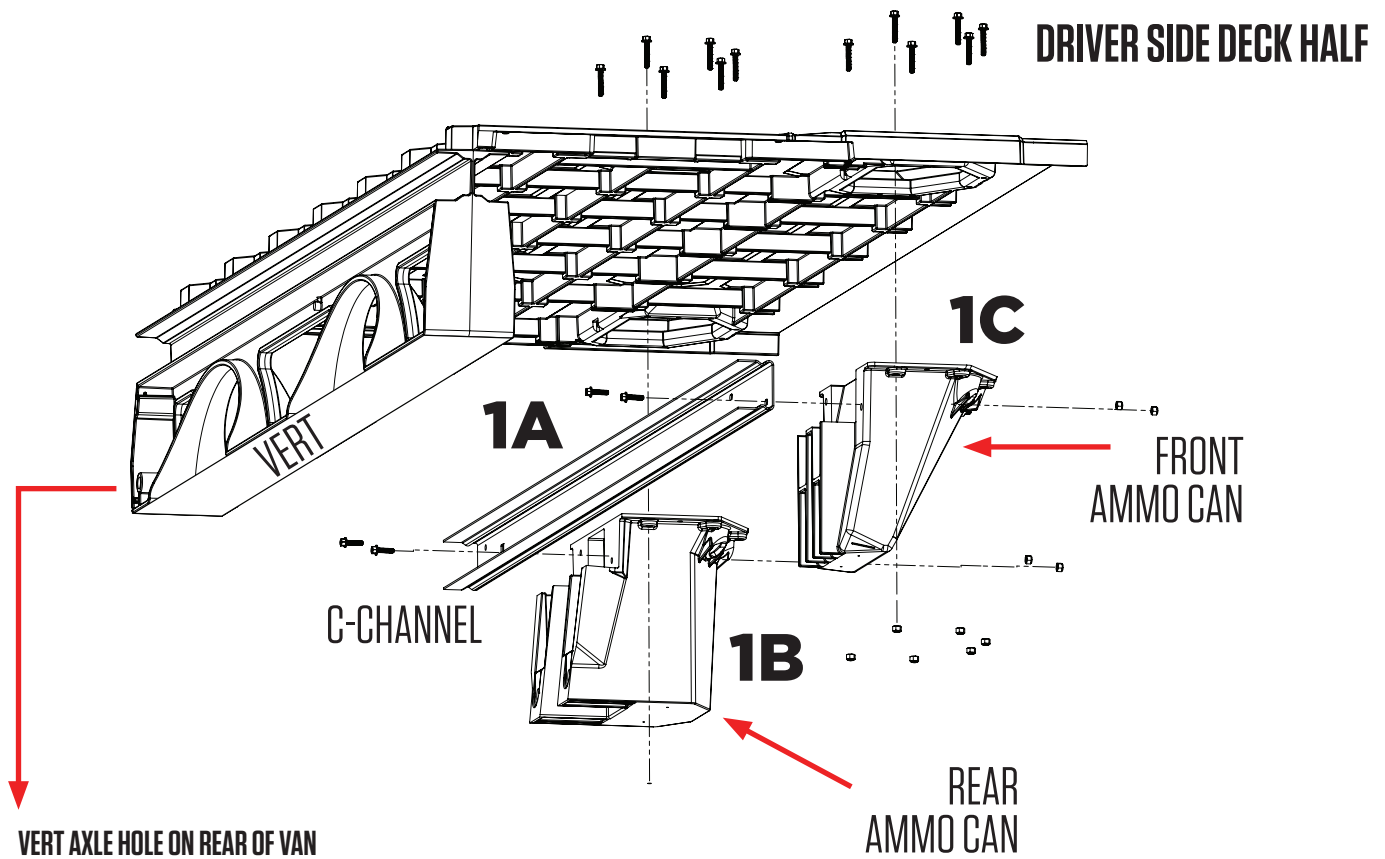
- Loosely bolt C-channel to the ledges on the **inside** of the two ammo cans; **bag 1A**.

Note: The small rectangular hole in the C-channel indicates the rear of van.

- Before bolting anything else together, line up the deck on top of the C-channel/ammo can assembly and the bosses on the vert, fully assembled in position. This will make everything level and easier to bolt in place.

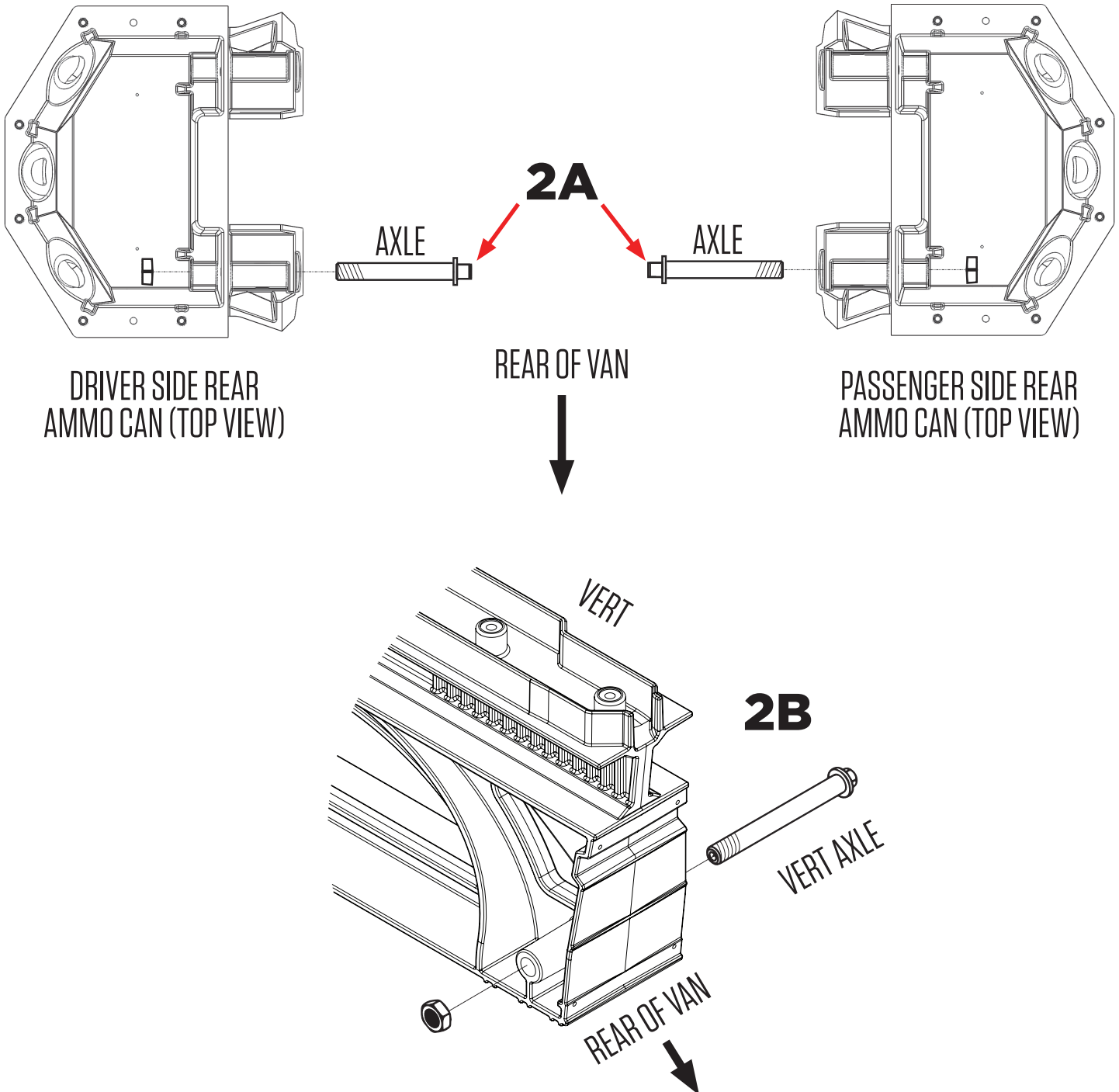
Note: Rear door side of vert has an axle hole at the bottom (see diagram below).

- Bolt deck to C-channel/ammo can assembly; **bag 1B** for driver side rear ammo can, **bag 1C** for drivers side front ammo can.
- Tighten bolts connecting ammo cans to C-channel.
- Bolt the deck to the vert; **bag 1D**. **Do not use power tools.**



STEP 2: INSTALL AXLES

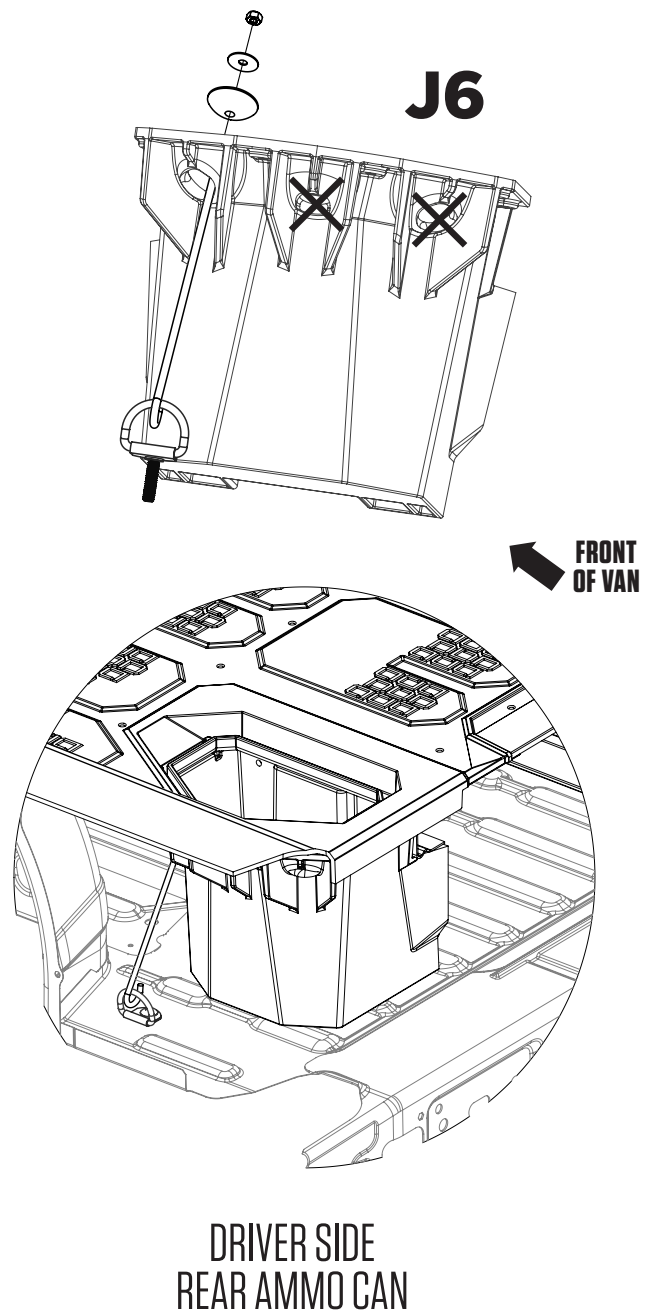
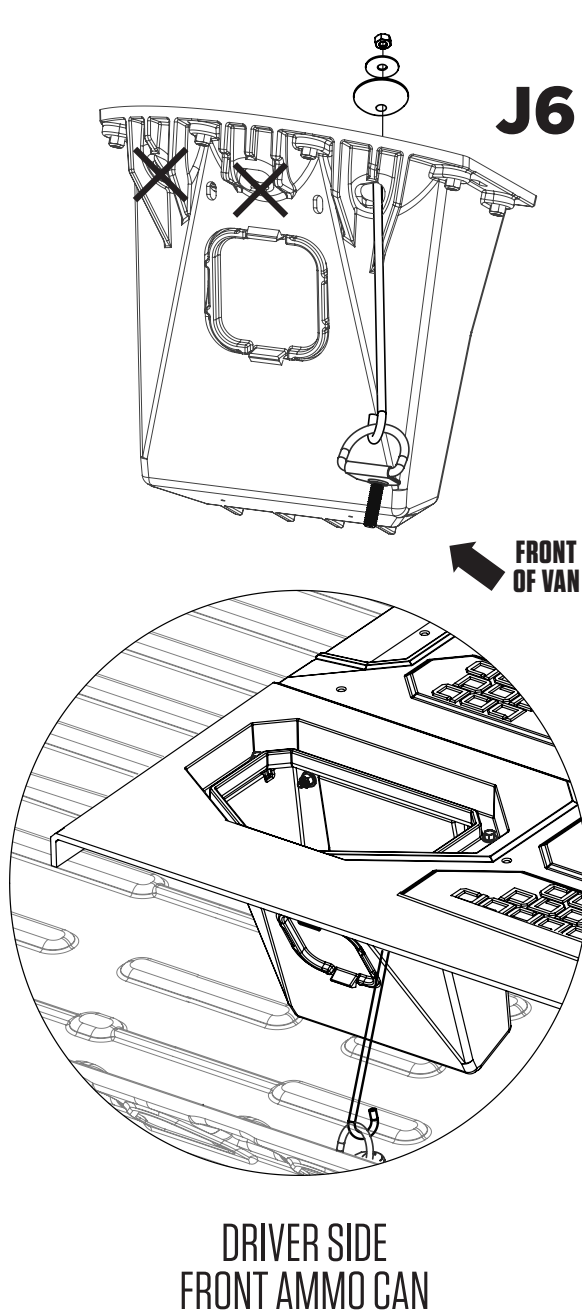
- 1). Install the driver side rear ammo can axle; **bag 2A**.
 - Simply rotate the axle from its inbound side using a wrench on the “flat” end (the flat is 1/2”) nut included in bag.
- 2). Repeat on passenger side rear ammo can; **bag 2A**.
- 3). Install vert axle; **bag 2B**.



STEP 3: INSTALL DRIVER SIDE DECK HALF

- Get a buddy to help you place the driver side deck assembly into your van and slide it up against the driver side wall.
- Insert the J-hook through the hole shown on the driver side front ammo can and loosely affix it to tie-down bracket (hook on bottom); **bag J6**.
- Insert the J-hook through the hole shown on the driver side rear ammo can and loosely affix it to tie-down with J-hook (hook on bottom); **bag J6**.

Important: Leave all J-hook screws loose until entire deck is in place.

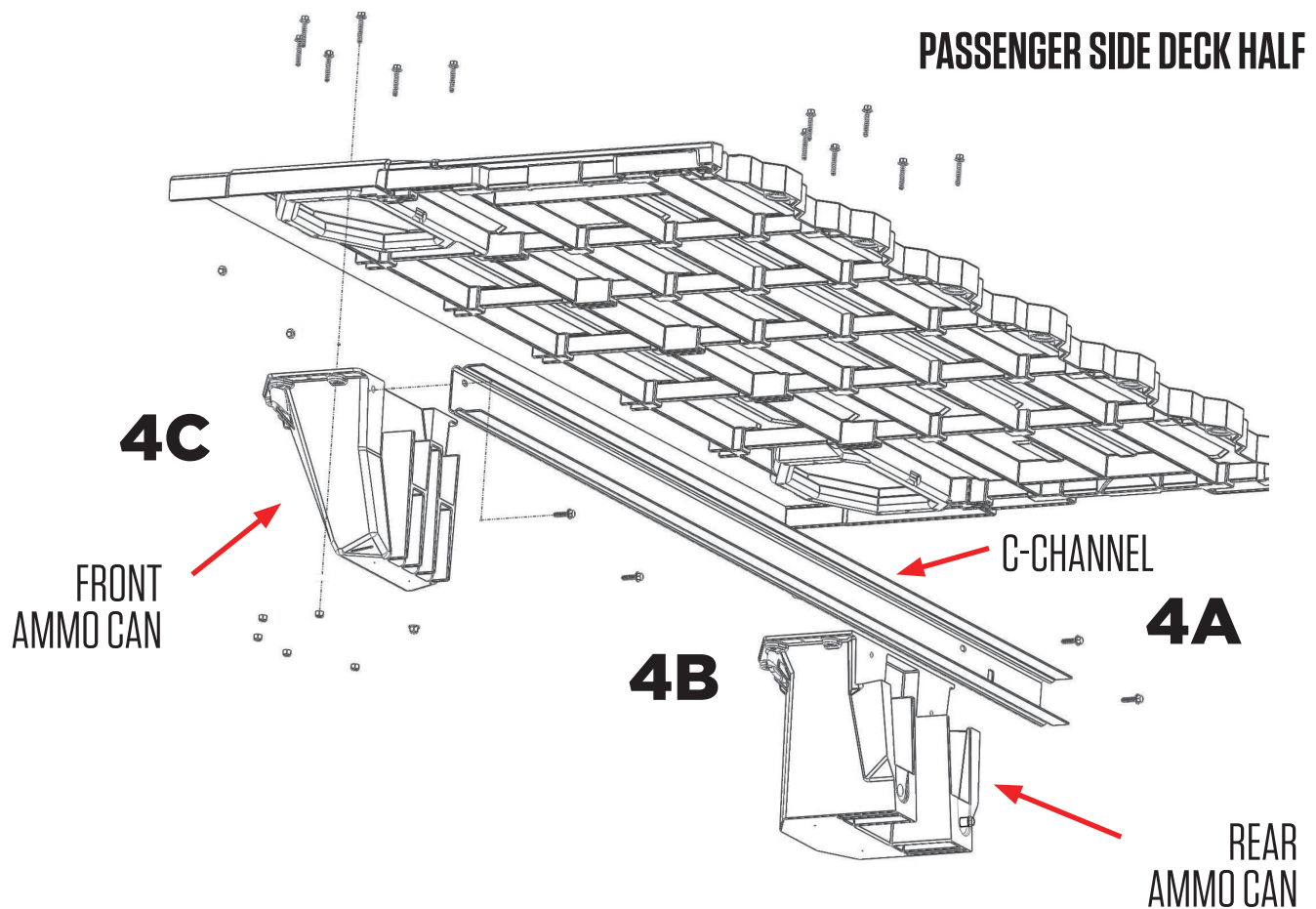


STEP 4: PASSENGER SIDE DECK ASSEMBLY

- Loosely bolt C-channel to the ledges on the “inside” of the two ammo cans; **bag 4A**.

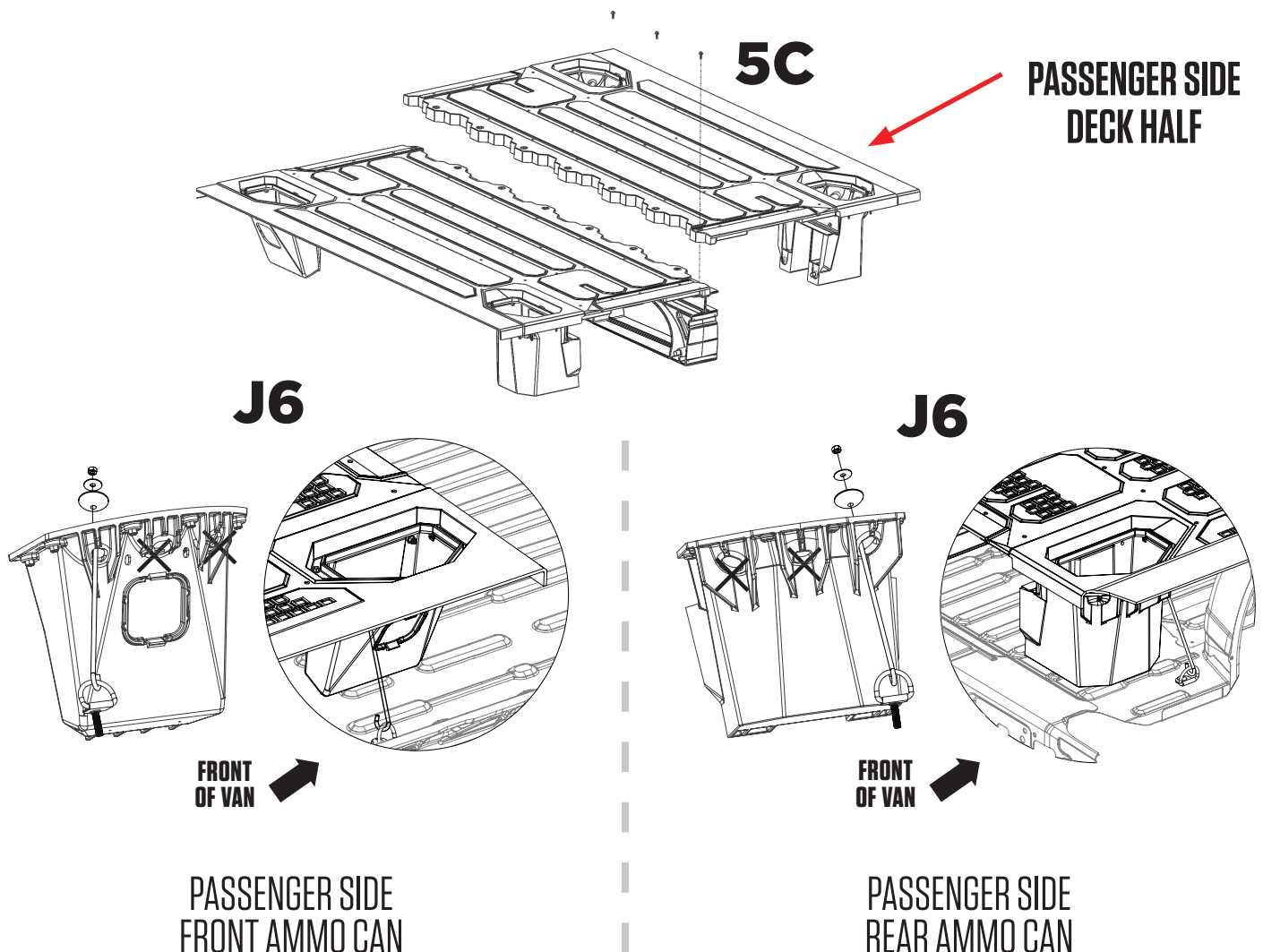
Note: The small rectangular hole in the C-channel indicates placement at rear end of van.

- Bolt deck to C-channel/ammo can assembly; **bag 4B** for rear ammo can, **bag 4C** for front ammo can.
- Tighten bolts connecting ammo cans to C-channel.



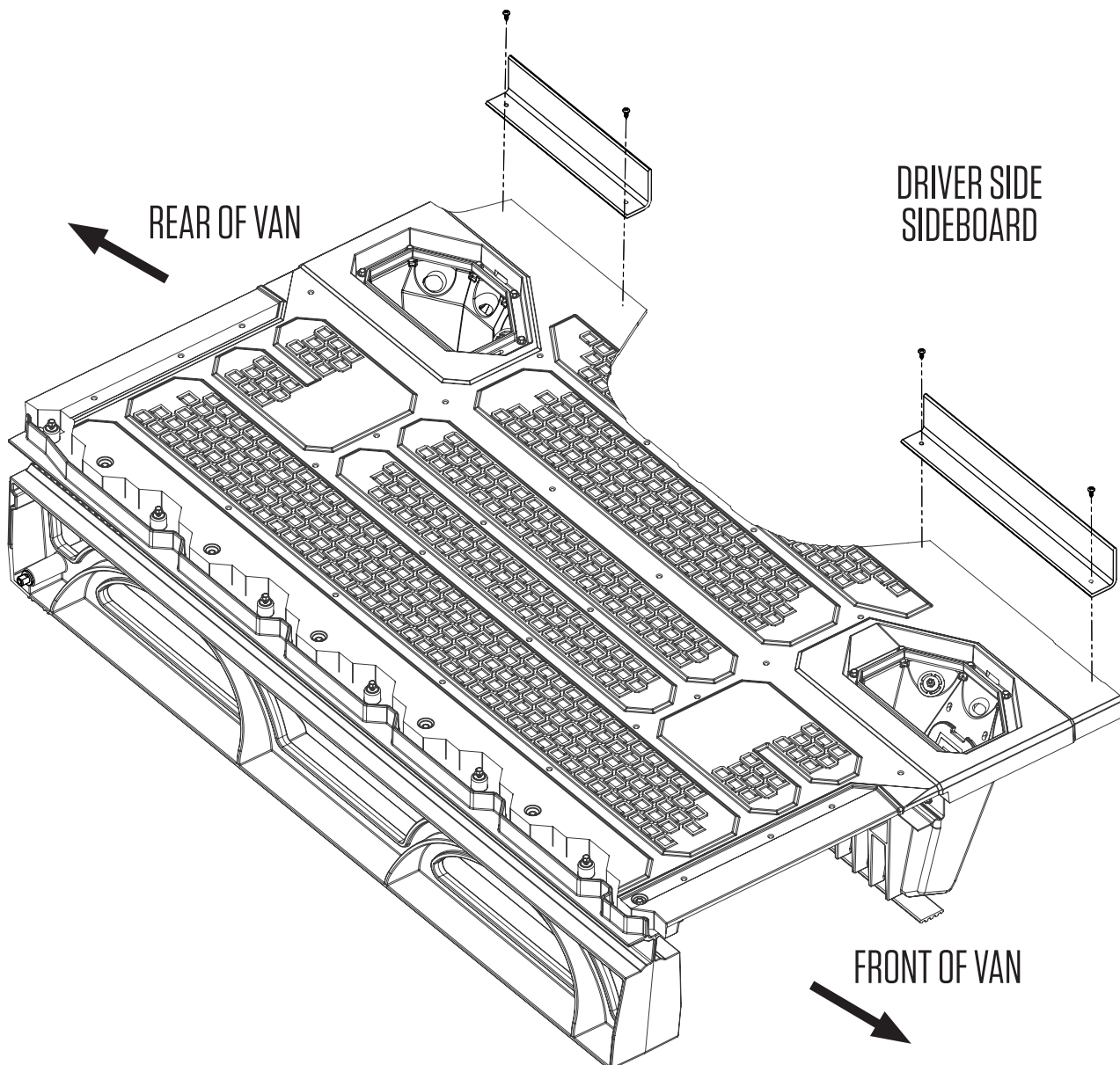
STEP 5: INSTALL PASSENGER SIDE DECK HALF

- Wake up your buddy to help you place the passenger side deck assembly into the van so it overlaps the driver side deck section. Slide until inside edge of the deck rests on the round bosses of the vert.
- Insert the J-hook through the hole shown on the passenger side front ammo can and loosely affix it to tie-down bracket (hook on bottom); **bag J6**.
- Insert the J-hook through the hole shown on the passenger side rear ammo can and loosely affix it to the bracket with J-hook (hook on bottom); **bag J6**.
- Bolt passenger side deck half to the vert; **bag 5C** (just like step 1D). Make sure all bolts connecting deck to vert are snug, **but no power tools**.
- Alternately and gradually tighten all J-hooks to ensure deck is centered and secure. **Do not tighten one side of J-hooks all the way in one step.**
- Install window covers in front ammo cans.



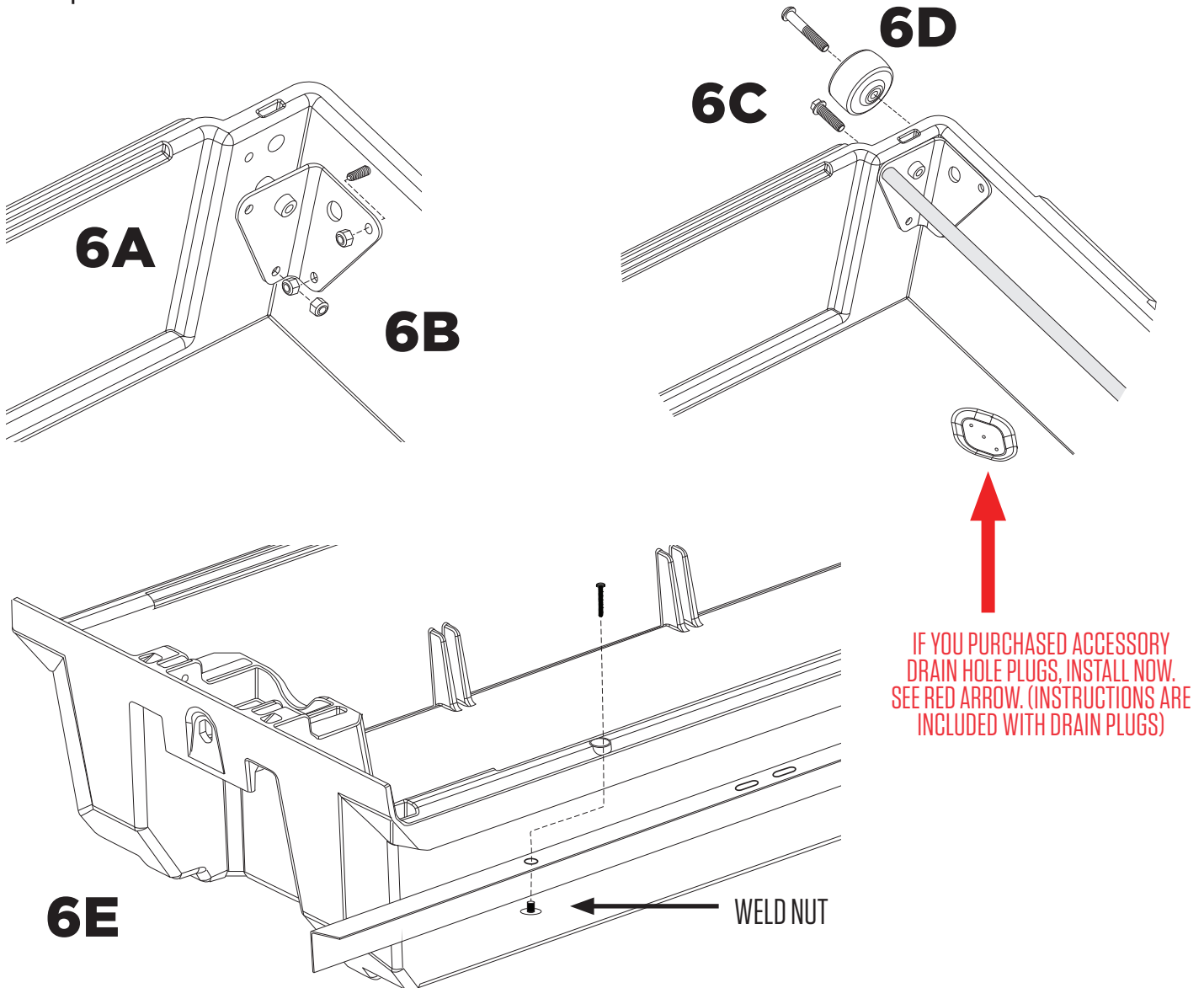
STEP 5.5 INSTALL SIDEBOARDS

- Identify driver side 'L' shaped plastic sideboards.
- Center the sideboards on deck panel as shown below.
- Push vertical leg of sideboards up against the interior side panel of van.
- Using the holes in the sideboards as a guide, install-self-tapping screws; **bag 5.5.**
- Repeat the process for the passenger side of the system.



STEP 6: INSTALL DRAWER WHEELS

- There is a left and a right corner bracket for each drawer—bolt brackets in place. (use the 2" bolts for the upper back wall bracket hole); **bags 6A and 6B.**
- Use tube brace with two bolts to connect the two corner brackets; **bag 6C.**
- Insert axle through wheel and affix to drawer bracket; **bag 6D.** Do this for each wheel (4 times).
- The L-braces (loose in system box) have six holes - one round, five ovalled. Turn drawer upside down and align brace with holes. The round hole should be closest to handle.
- Simply use your thumb to push the weld nuts into each hole. Once weld nuts are in place, turn the drawer upright and insert the screws (snug but not too tight); **bag 6E.**
- Repeat for all drawer sides.



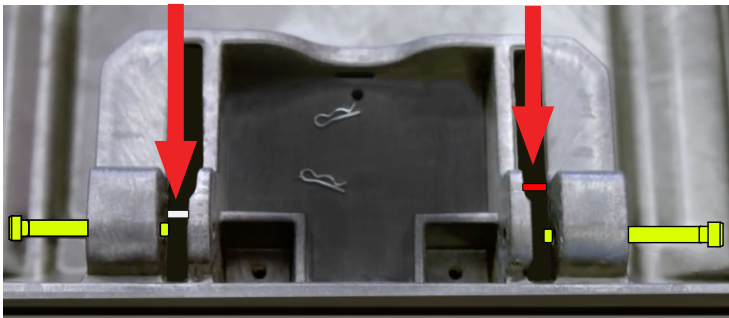
STEP 7: INSTALL DRAWER HANDLES

- Save yourself the headache, watch this short installation video: decked.com/videohandle
- From the **underside** of drawer, place the springs between the holes, red spring=right spring; **bag 7A**.
Note: each spring arm should point inward, not outward.
- Install clevis pin through each drawer hole and through spring; **bag 7B**.
- With DECKED logo facing outward, insert the handle ends behind the spring arms. Rotate the top of the handle toward the clevis pins, pulling the spring arm downward. When the handle hole is lined up with the clevis pin, push the pin through the handle hole and through the drawer hole. Repeat on the other side of the handle.
- Install hair pin through the clevis pin; **bag 7B**.
- Repeat process for the other drawer; **bag 7C & 7D**.

TOP VIEW

WRONG:

SPRING ARM IS HERE
(NOT FULLY HORIZONTAL)

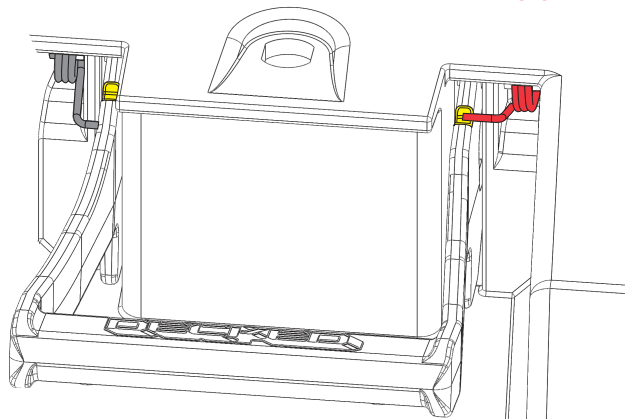


CORRECT:

SPRING ARM IS HERE
(FULLY HORIZONTAL)

WRONG:

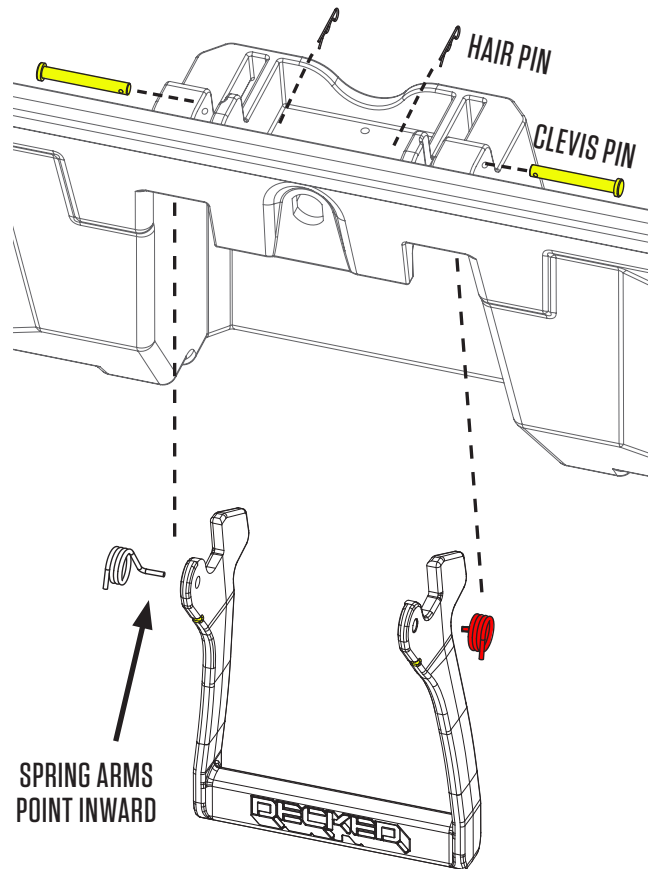
SPRING ARM OUT
OF HANDLE NOTCH



CORRECT:

SPRING ARM FITS
IN HANDLE NOTCH

HANDLE OVERVIEW



HELPFUL TIP: MAKE SURE SPRINGS HAVE
THE LONG ARM HORIZONTAL AND SHORT LEG
VERTICAL BEFORE INSERTING HANDLE



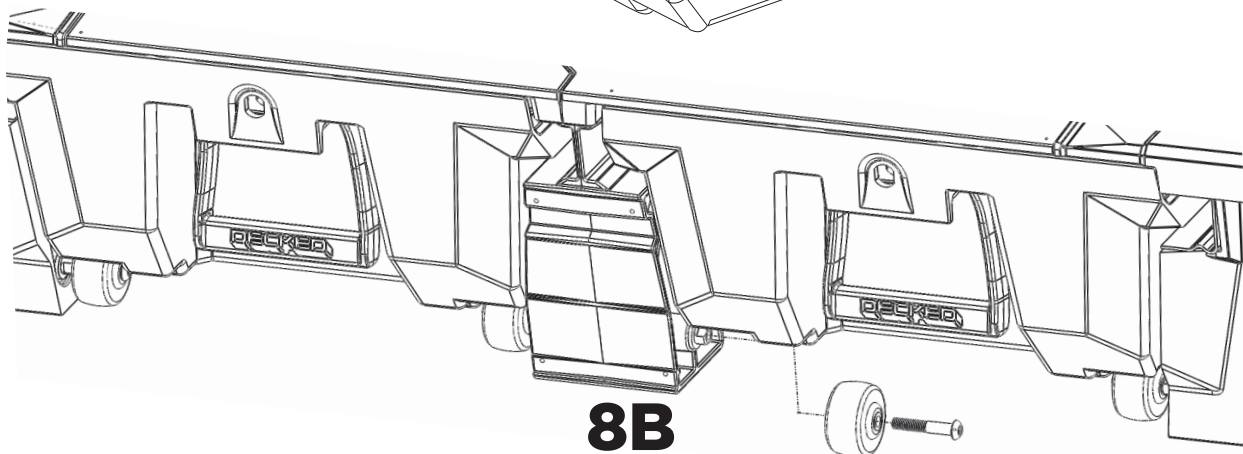
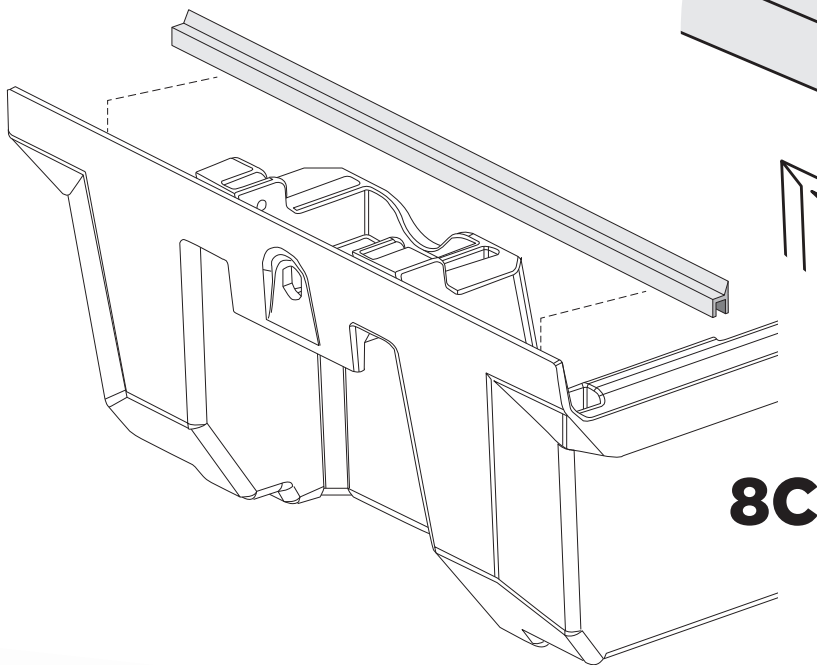
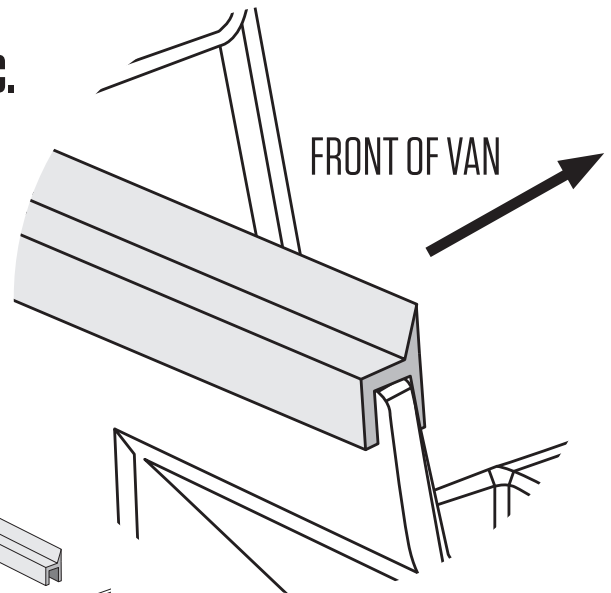
STEP 8: INSTALL DRAWERS

- Save yourself the headache, watch this short installation video: decked.com/videotailgatewheels
- Install drawer braces (packed separately); **bag 8A.**
- Slide the rear drawer wheels into their two channels (C-channel and vert).
- Install remaining tailgate side wheels onto their axles; **bag 8B.**

Note: Placing a spacer under the drawer to raise it into position makes this easier (ammo can lids work well).

- Place weather stripping on top of the tailgate side drawer edge *with the wiper facing front of van*; bag 8C.

Note: Facing the weather stripping the wrong way will funnel water into drawer: BAD!



STEP 9: THE FUN STUFF

Caution: These are small gauge screws—light, hand-tightening is all that is required.

- Center and screw on the edge guard/ruler; **bag 9A**.
- Screw on the bottle opener; **bag 9A**.
- Using your favorite beverage, test the bottle opener, and think about how jealous your buddies are going to be.

