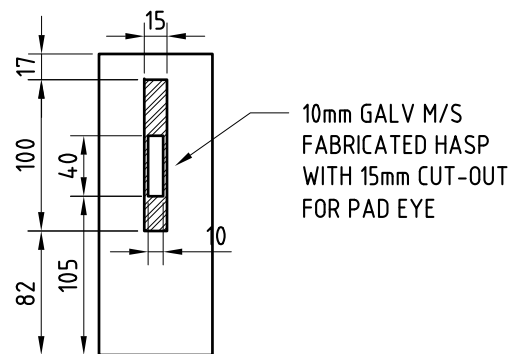
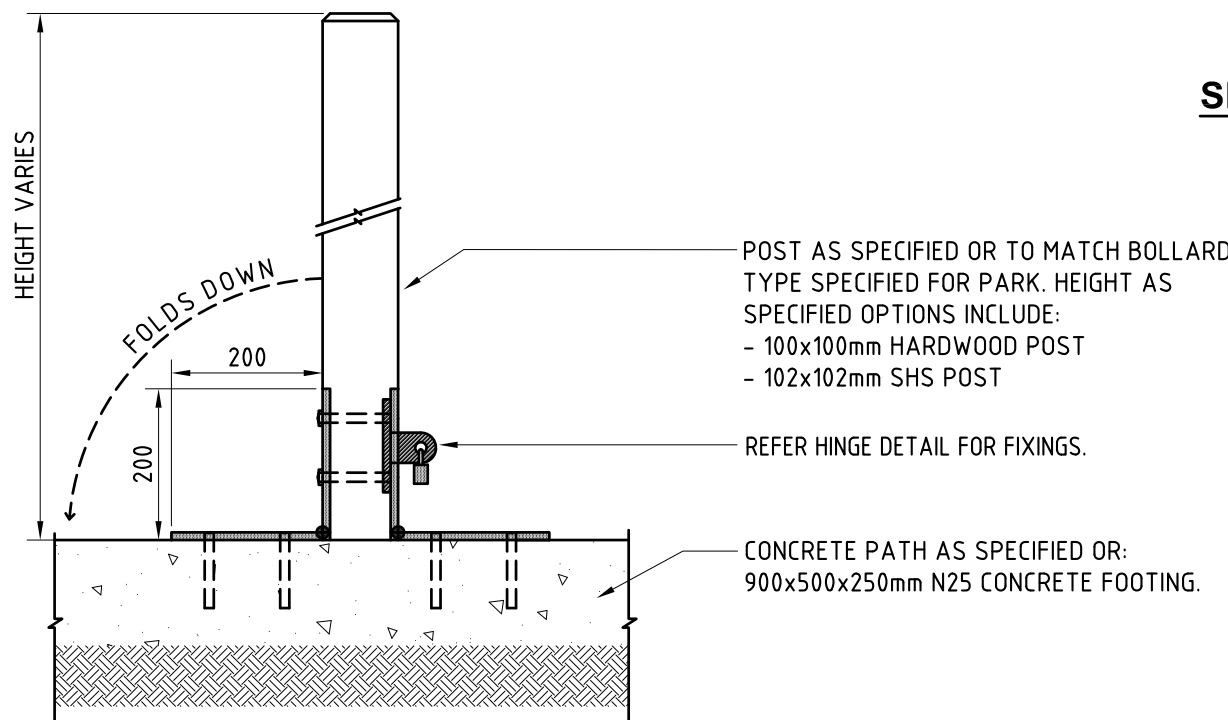


POSITION MASONRY ANCHORS TO BE OFFSET FROM HEADS OF BOLTS IN FOLDED DOWN POSITION

HINGE DETAIL



SECTION A-A: PAD EYE DETAIL
SCALE 1:5



REMOVABLE BOLLARD - SECTION

GENERAL NOTES

ENSURE BOLLARD MARKERS ARE LOCATED AND LANDSCAPED IN ACCORDANCE WITH DETAILED LANDSCAPE PLAN, AND SUBDIVISION AND DEVELOPMENT GUIDELINES.

ENSURE BOLLARDS ARE CLEANED OF CONCRETE SLURRY OR SPRAY WHEN INSTALLED TO PREVENT STAINING OR DAMAGE TO APPLIED FINISHES.

ALL DIMENSIONS IN MILLIMETRES (U.N.O.).

FIXTURES/FITTINGS/METAL WORK

ALL FIXTURES/FITTINGS UNLESS SPECIFIED ARE TO BE HOT DIPPED GALVANISED.

GRIND SMOOTH EDGES & WELDS PRIOR TO H.D.G. OR APPLIED FINISHES. ALL WELDS TO BE CONTINUOUS, GROUND OFF SMOOTH & FLUSH.

WHERE POSSIBLE ALL FIXINGS TO BE TAMPER/VANDAL PROOF TO MINIMISE DAMAGE OR THEFT.

CONCRETE WORKS

AT A MINIMUM ALL CONCRETE TO BE GRADE N25 BROOM FINISHED 125mm MIN THICKNESS.

ALL CONCRETE WORKS TO BE REINFORCED MIN SL72 MESH.

ENSURE MIN TOP COVER OF 50mm. FOR SLIP RESISTANCE REQUIREMENTS REFER SPECIFICATION S150 ROADWORKS.

ALL PATHWAY/PAVEMENT AREAS TO HAVE 1:50 MINIMUM CROSS-FALL.

TIMBER NOTES - HARDWOOD BOLLARD

ALL TIMBER TO BE ACQ TREATED ROUGH SAWN APPEARANCE GRADE HARDWOOD OF A SINGLE SPECIES.

ALL EXPOSED EDGES ON ANGLED TOP BOLLARD TO RECEIVE MIN. 5mm WIDE ARRIS.

PRIOR TO INSTALLATION, ALL CUTS, EDGES, JOINTS TO RECEIVE LIBERAL COATINGS WITH AN APPROVED TIMBER PRESERVATIVE.

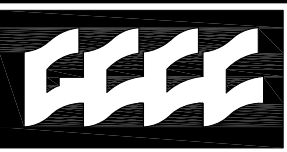
ALL TIMBER TO BE PRESERVATIVE TREATED TO HAZARD CLASS H4 TO AS 1604.1-2000 AND HAVE A DURABILITY CLASS 1 OR 2 TO AS 5604-2003.

ALL TIMBER TO BE FREE OF KNOTS, SPLINTERS, CRACKS OR ANY MAJOR DEFECT. TIMBER FINISHES AS SPECIFIED - WHERE NO FINISH SPECIFIED,

ALL TIMBER TO RECEIVE 3 COATS OF CLEAR APPROVED TIMBER PRESERVATIVE.

COLOUR SELECTION WHERE APPLICABLE IN ACCORDANCE WITH STANDARD GCCC CORPORATE COLOUR PALETTE.

BOLLARD FINISH COLOUR TO BE Y15 (SUNFLOWER YELLOW) TO AS2700 WHERE LACK OF VISIBILITY COULD CAUSE A HAZARD.



GOLD COAST CITY COUNCIL
PO BOX 5042
GOLD COAST MC 9729

THIS DRAWING IS NOT TO BE AMENDED WITHOUT REFERENCE TO STANDARDS COMMITTEE				CONTROLLED DOCUMENT	DO NOT SCALE TAKE FIGURED DIMENSIONS ONLY
					DRAFTING BY
					TECHNICAL SERVICES BRANCH
					PASSED - COORDINATOR OPEN SPACE ASSETS
					SIGNED: CAMERON TAYLOR DATE: 6/12/12
					APPROVED - MANAGER PARKS & RECREATIONAL SERVICES
					SIGNED: RON JACOBS DATE: 6/12/12
No.	AMENDMENT	APPROVED	DATE	ISSUED	

STANDARD DRAWING		MICROFILMED
BOLLARD REMOVABLE		STANDARD DRAWING No. 13-05-012
		ISSUE 2013 EDITION
THIS DRAWING HAS BEEN SOURCED FROM BRISBANE CITY COUNCIL STANDARD DRAWINGS 2001 - SERIES 700 : PARKS		