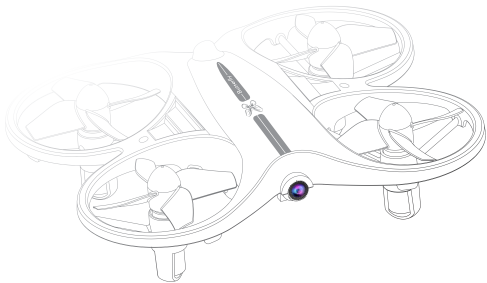




FOR AGES
8+

Butterfly

L6069 DRONE



Please read this instruction clearly(especially the CAUTIONS and WARNING part).Please keep this manual for future reference.

CAUTIONS:

1. Cautions:

This products is not a toy, it is a precise device which requires accurate assembly and debugging to avoid accident. It should be operated in proper way, it is the user's responsibility to make sure that it will not do harm to personal security and property.

- (1) Not suitable for children under 14 and without model operating experience
- (2) Please choose a legal area to play this drone
- (3) We will not be responsible for any damage caused by improper operation
- (4) For any technical support and after-sale service, please contact your local distributor

2.Warning:

The drone is a high-risk product, please keep it away from the crowd while playing.It might cause the accident of drone damaged or personal injury by improper assembly, poor control or unfamiliar operation, please be cautious.

- (1) Keep away from the crowd, high building, high-voltage line,and avoid to play it in stormy and thunderstorm weather to ensure safety
- (2) Keep away from humid conditions to avoid malfunction
- (3) Keep away from the blades to avoid danger and damage

This product is using Li-po battery, which will lead to explosion if it is improperly operated.

- Do not charge the battery when putting it inside the drone, it might cause fire and damage.
 - Please keep the drone with 50% power if you do not play it for a long time, to extend the battery life.
 - Please use the original charger.
 - Do not charge the battery on the carpet to avoid fire.
 - Please recharge the Li-po battery if it is stored more than 3 months.
- distributor

ACCESSORIES:

RC drone



Battery



Manual



USB charging cable



Transmitter



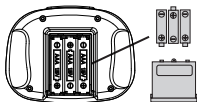
PRODUCT SPECIFICATION:

Product Size:	80mmX80mmX30mm
Remote Battery:	3x 1.5v AAA (not included)
Remote control distance:	30 m
Product Battery:	Li-Polymer 3.7V 300 mAh
Flight duration:	5-6 minutes

BATTERY INSTALLATION AND CHARGING INSTRUCTION:

REMOTE BATTERY SETTING:

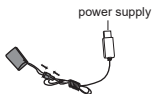
Place batteries according(+/-)



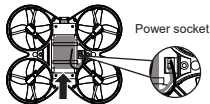
DRONE BATTERY CHARGING



Remove the battery



Charging batteries



Install battery

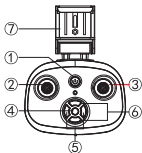
Take out the aircraft battery, then connect the USB charging cable charging head to the battery charging socket, and connect the USB terminal to the power supply for charging.

Pay attention to the following when charging:

- Do not leave the charged battery in a hot place, such as an open flame or electric heater, otherwise it may be damaged or explode.
- Do not immerse the battery in water. The battery should be stored in a dry place.
- Do not disassemble the battery.
- Do not leave when charging.

REMOTE INSTRUCTION:

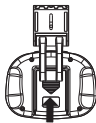
- | | |
|------------------------------------------------------------------------|------------------------------------|
| ① Switch (long press for two seconds off) | ④ 360°Stunt |
| ② Left stick | ⑤ Forward/Backward fine adjuster |
| ③ Right Stick(Press "Di" under the putter to start the headless mode). | ⑥ Leftward/Rightward fine adjuster |
| | ⑦ Phone attaching clamp |



SMARTPHONE HOLDER SETTING



Remove the battery cover on the back of the remote control and replace it with the battery cover with the phone holder



APP DOWNLOAD:

① Downloading the installation software



Download the real-time aerial-photographic software "Butterfly_UFO", which enables the aircraft to make FPV real-time transmission during the course of flying.

Please download and install Butterfly_UFO software from your Android phone. Apple IOS system in the APP STORE inside to download and install Butterfly_UFO software or scan QR code to download and install Butterfly_UFO software



QR code of "Butterfly_UFO" software for Apple ISO system



QR code of "Butterfly_UFO" software for Google play system



QR code of "Butterfly_UFO" software for android system

PREPARATORY FLIGHT

1. Match the 2.4G frequency

Turn on the drone, put the drone on the flat, at that time the drone signal will keep flicker, then turn on the remote control, push the left stick forward and backward.)



2. Reset operation.

When the frequency is successful, the left and right joysticks are pulled back at the same time and kept for a minimum of three seconds or more. The first time the aircraft's "flying" indicator light flashes and then turns on constantly, indicating that the reset is successful.



2. Start and stop operation

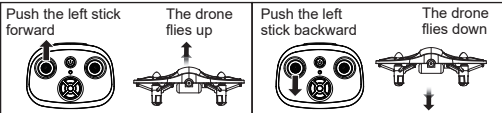
1. After the frequency is successful, push the left joystick up once, the aircraft starts, release the throttle and push the aircraft to take off.

2. The left joystick is pulled down and the aircraft descends.

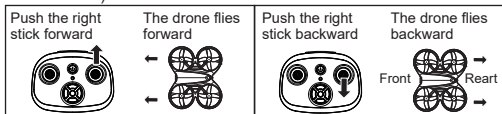


FLYING CONTROL

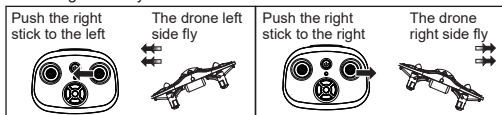
1. Throttle(the left stick)



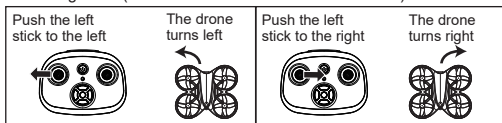
2. Forward/Backward (the right stick,the side with camera is the ahead side)



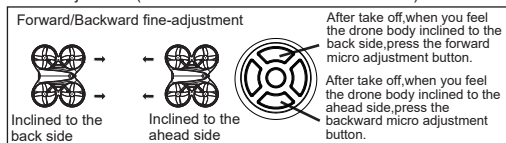
3. Left/Right side fly



4. Left/Right turn(the side with camera is the ahead side)



5. Fine adjustment(the side with camera is the ahead side)



Left/Right fine-adjustment



Inclined to the left side



Inclined to the right side

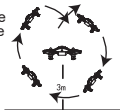


After take off, when you feel the drone body inclined to the right side, press the left micro adjustment button.

After take off, when you feel the drone body inclined to the left side, press the right micro adjustment button.

360° STUNT FLIP FUNCTION:

When you are familiar with the basic actions, you can proceed to explore even more exciting stunt actions. Fly the drone to a height of above 3 m above the ground, press the button (Stunt Flip Button) on the remote control and then push the right joystick to the farthest position of Front/Back/Left/Right, the drone will now execute the Front/Back/Left/Right stunt flip function.



SPEED CHANGE

Press the left joystick down to adjust the speed of forward, backward, left and right side and steering; the speed is divided into three gears, the default is one gear, press "di" two sounds for the second gear, then press "di, di, The three-tone is the third gear, and when you press the "di", it returns to the first gear.



FIXED HEIGHT FUNCTION

This product is fixed by the barometer. Due to various environmental factors and other factors, it is normal for the aircraft to automatically change when it starts flying or at low voltage!

HEADLESS MODE:

When the headless mode is on, the drone will base on pilot's position as reference for any signal received from the right stick on the remote. (The right stick push forward, the drone will fly away, push backward, the drone will fly back, the direction that the drone itself is facing will not affect.)

1. Flying direction setting: Put the drone right in front of you, point the remote towards the back of the drone, then press one key take off.

2. Press the right joystick of the remote control to make a "Bi" sound, and the aircraft lights quickly to enter the headless mode. Press the remote button again to make a "flute" and exit the headless mode.

