



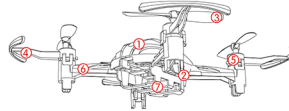
# B&G

MINI DRONE WITH DUAL CHARGING MODE

\*Please read this manual carefully before operation and keep it properly for future reference.

## KNOW YOUR B&G

The responsive infrared remote control makes B&G perfect for indoor flying and easy to control the drone to fly, rotate and take turns.



- ① Upper casing
- ② Frame
- ③ Propeller
- ④ Protective guard
- ⑤ Motor
- ⑥ Crankshaft
- ⑦ Battery holder

## Accessories



B&G x1  
(Battery included)



Remote control x1



Backup propeller x4



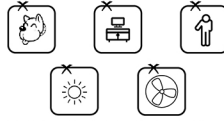
User manual x1

### Notes:

Please check the number of accessories carefully (as shown above). Please provide proof of purchase and contact the store for replacement if any missing parts.

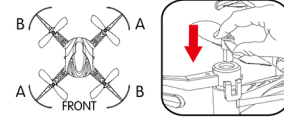
## PRE-FLIGHT PREPARATION

### 1. Flight Environment

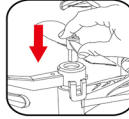


**Indoor Flight:** Please choose a strong wind without barriers, pets and people and keep the drone in sight during flights. Prevent from the ultraviolet rays in case of any interference.

### 2. Propellers Installation



A corresponds to A  
B corresponds to B



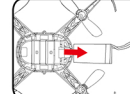
Align the crankshaft and press down the propeller lightly

### Notes:

When installing or dismantling the propeller, please do not exert force on the propeller to avoid distortion.

## 3. Battery Charging for Drone

### Charging Method 1:

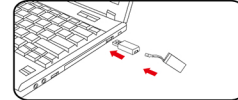


A. Remove the battery from drone bottom.



B. Connect the lithium battery with the charging interface on the remote controller to charge up.

### Charging Method 2:



Connect USB charger with lithium battery and the USB charging interface to charge up (USB charger is not included).

### Notes:

- A. The LED light turns on when charging via the remote controller and turns off when fully charged 30 to 50 minutes later.
- B. The LED light turns on when charging via the USB and turns off when fully charged 40 to 50 minutes later.

## ▲ Battery Instructions

- There is a certain risk when using lithium battery. It may cause fire, body injury or property loss. Users must be aware of the risks and take full responsibility of using battery improperly.
- If battery leakage occurs, please avoid contacting your eyes or skin with electrolyte. Once it happens, please wash your eyes with clean water and seek medical care immediately.
- Please remove the plug immediately if you sense any peculiar smell, noise or smog.

### Battery Charging

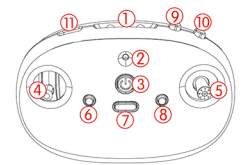
- Please use the charger from original factory to ensure your safe usage.
- Do not charge dilutant or outworn battery.
- Do not over charge battery. Please unplug the charger once fully charged.
- Do not charge the battery next to inflammables, such as carpet, timber floor or wood furniture or on the surface of electro-conductive objects. Please always keep an eye on the battery when charging.
- Do not charge battery which not cool down yet.
- The charging temperature should be between 0°C to 40°C.

### Battery Recycling

Do not dispose the battery as daily rubbish. Please familiarize yourself with the local garbage disposal method and dispose it according to the special requirement.

## KNOW YOUR REMOTE CONTROL

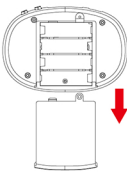
### 1. Operation Board of Remote Control



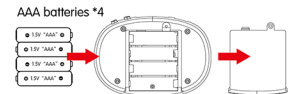
- ① Infrared Emitter
- ② LED Light  
(The light turns green when charging and turns red when charging completes)
- ③ Power  
(Short press to turn on/ Long press to turn off)
- ④ Throttle Joystick  
(Rubber Joystick)
- ⑤ High/Low Speed Control  
(For altitude hold version)
- ⑥ One-key Start
- ⑦ One-key Landing  
(Rotation/Long Press for Calibration)
- ⑧ Left Rotation
- ⑨ Short Press For Right Rotation/Long Press for Calibration
- ⑩ Charger  
(The LED light turns green when charging and turns off when charging completes)

## 2. Battery Assembling for Remote Control

- ① Open the Remote Control Battery Cover  
Open the battery cover by sliding the cover downward (as shown in figure).



### ② Battery Assembling for Remote Control



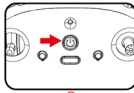
Open the cover of battery compartment, insert four AAA batteries (not included).

### Notes:

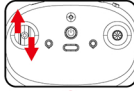
- 1. Ensure the polarity symbols on the batteries match the symbols inside the battery compartment.
- 2. Do not mix new and old batteries.
- 3. Do not mix different types of batteries.

## 3. Pairing Remote Control with Drone

- ① Turn on the power of the drone; put the drone on plain ground; check whether the indicator lights of remote control and LED lights of drone flash.

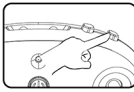


- ② Push the accelerator joystick to the top and then pull back to the bottom. When the flash of indicator lights of remote control and LED lights of drone turn to constant lights, the pairing completes.



## 4. Calibration

Calibrate the drone when it cannot vertically ascend. Long press "One-key Calibration" button and the indicator light of drone would start flashing, then turn to constant light. Thus the calibration completes. Ensure the whole process of calibration is operated under horizontal and steady circumstances.



## FLY WITH REMOTE CONTROL

### 1. One-key Start

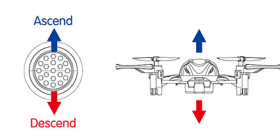
Press "One-key Start" to activate the motor and propellers, the drone will take off and then fly at a height of 1.5 m above the ground. (For altitude hold version)



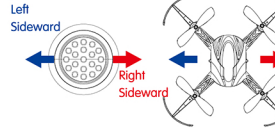
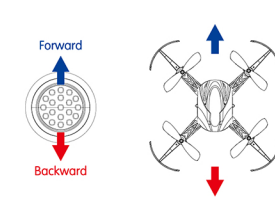
### 2. Flying

The left joystick is used to control flying height, while the right joystick is used to control forward, backward and sideward flights.

### Left Joystick

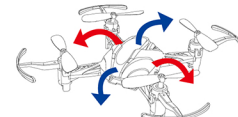
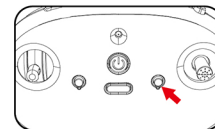


### Right Joystick

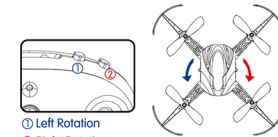


## Flips and Rolls

Till the drone flies over 3 meters, press the button of flips and rolls and move the right joystick to certain direction to finalize flips and rolls.



### Left and Right Rotation



- ① Left Rotation
- ② Right Rotation

## FAQ

PROBLEMS	CAUSES	SOLUTIONS
Control failure	Not connect with the drone battery.	Connect the drone battery in right way.
	Too strong wind force.	Do not fly in windy days. The performance and the control of the drone will be affected by the strong winds.
Fail to ascend	The rotation speed of main blades is too slow.	Push up the throttle joystick.
	The battery of the drone is not fully charged.	Please full charge the drone.
Landing too soon	The throttle joystick is pulled down too fast.	Pull down the throttle joystick slowly to perform a smooth landing.
Out of control	Beyond the effective controlling distance.	Ensure that the flying distance is within 15 meters.

## JJRC TECHNICAL SUPPORT

Dear Customer,

Thank you for choosing JJRC product. Please visit JJRC official website for more FAQ and information if there is any problem of using our product.

- Product Operation: Please visit JJRC College for tutorial video or user manual.
  - Product Features: Please refer to product page description or product brochure.
  - After-sale Service: Please refer to conditions and terms of after-sale service.
- The final interpretation right belongs to all JJRC.

Should you have any further questions, please visit JJRC Online Feedback and leave your message.

Thank you again for your support!  
JIANJIAN TECHNOLOGY CO.,LTD.  
www.jjrc-tech.com