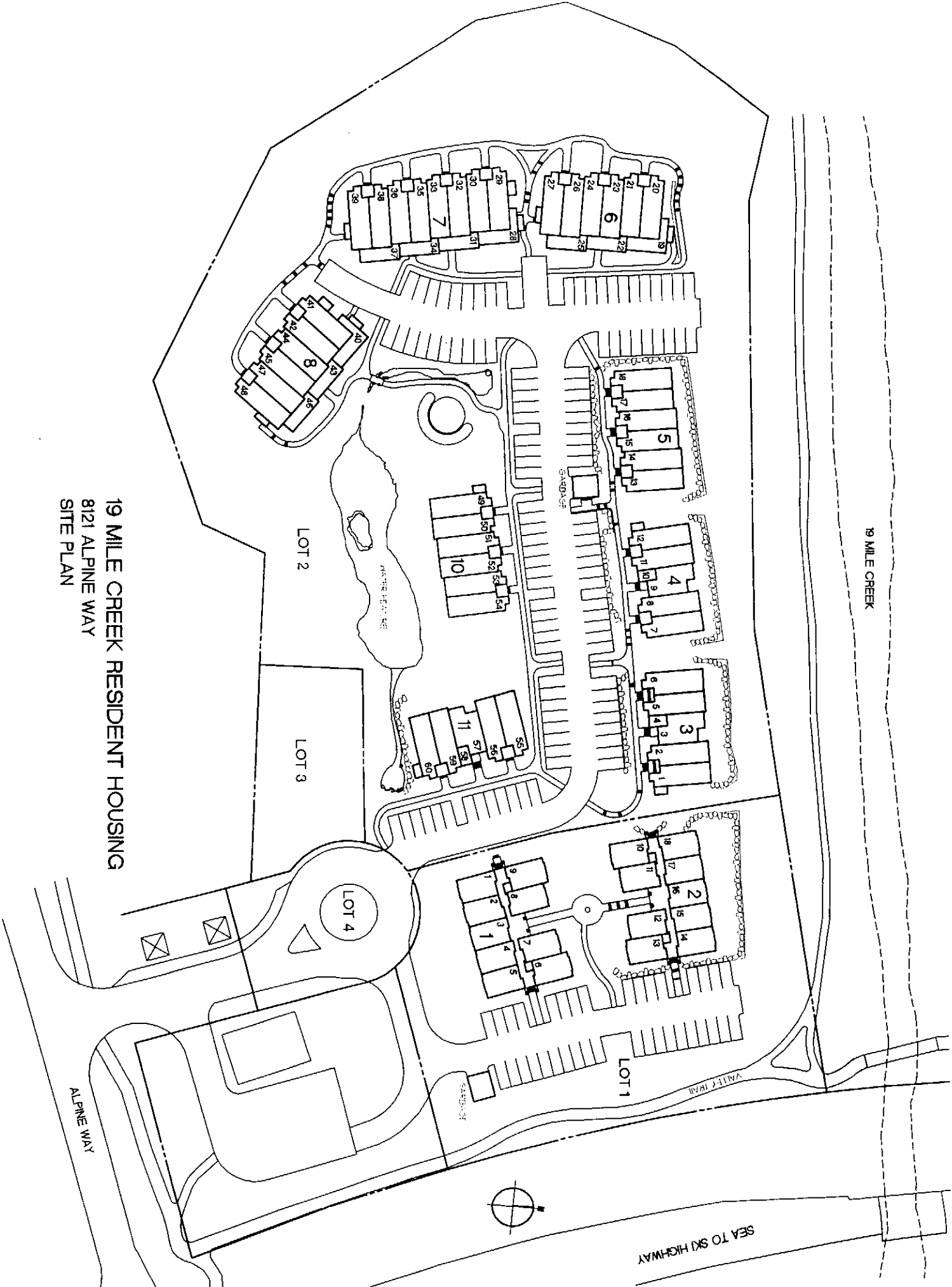
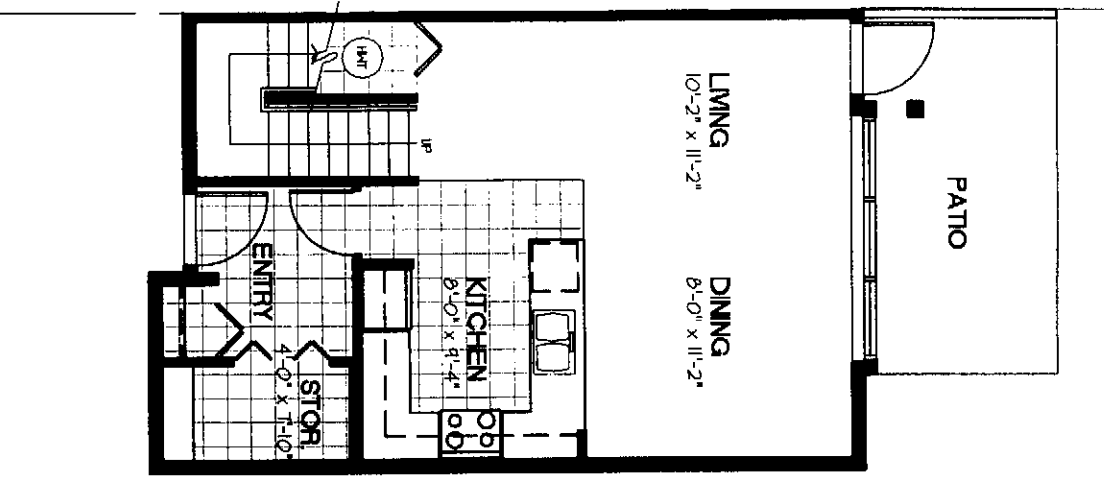
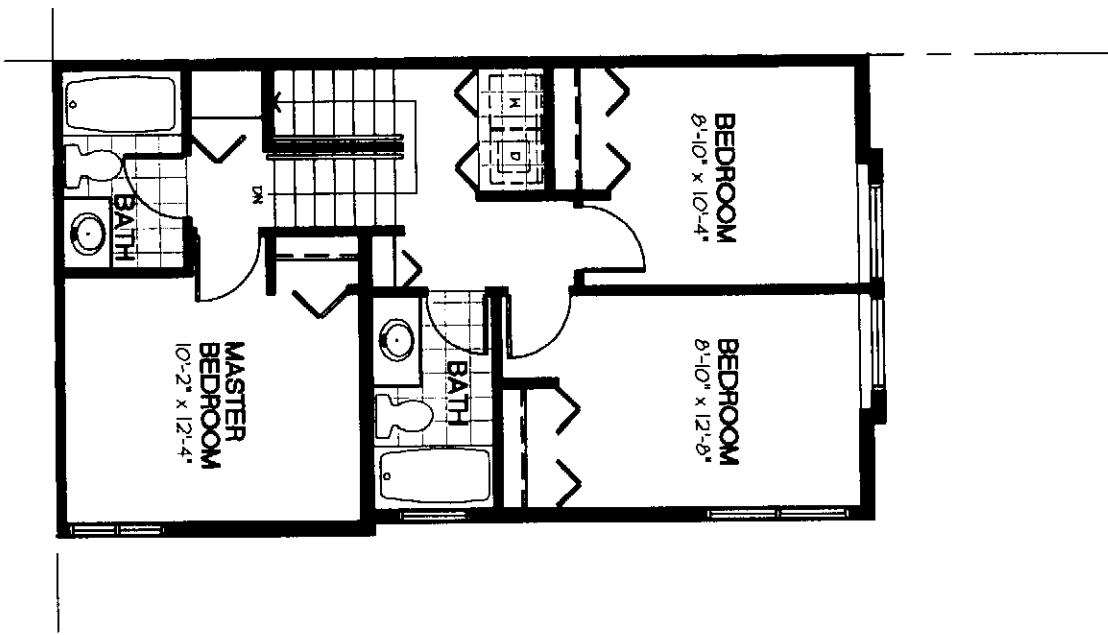


19 MILE CREEK RESIDENT HOUSING  
8121 ALPINE WAY  
SITE PLAN



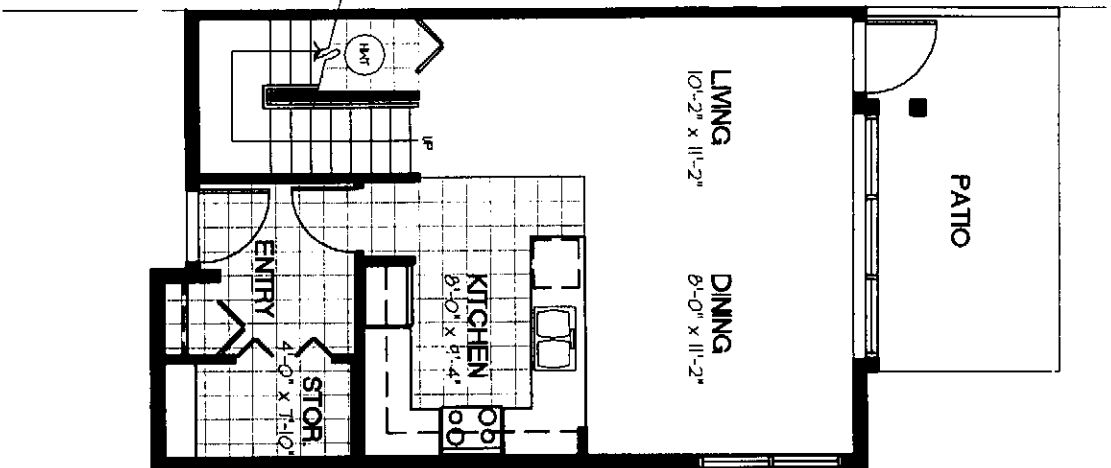


1st FLOOR PLAN

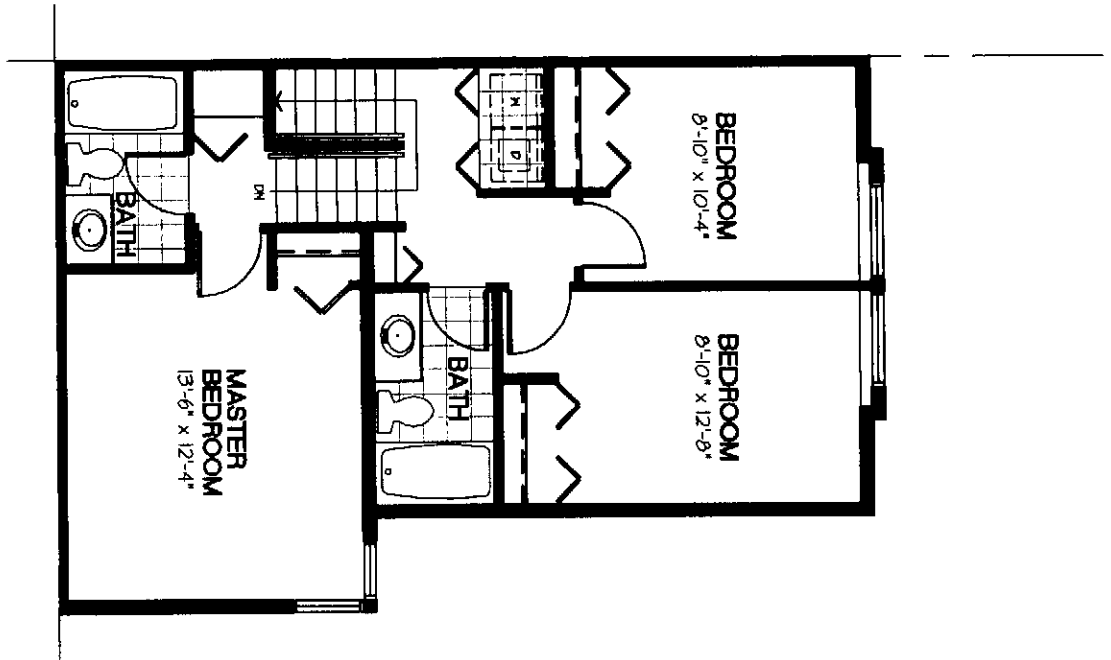


2nd FLOOR PLAN

**UNIT TYPE 'A'**  
**3 BEDROOM TOWNHOUSE**  
 APPROX. 1225 sf  
 ROOM SIZES ARE APPROXIMATE  
**BUILDINGS 1, 2**

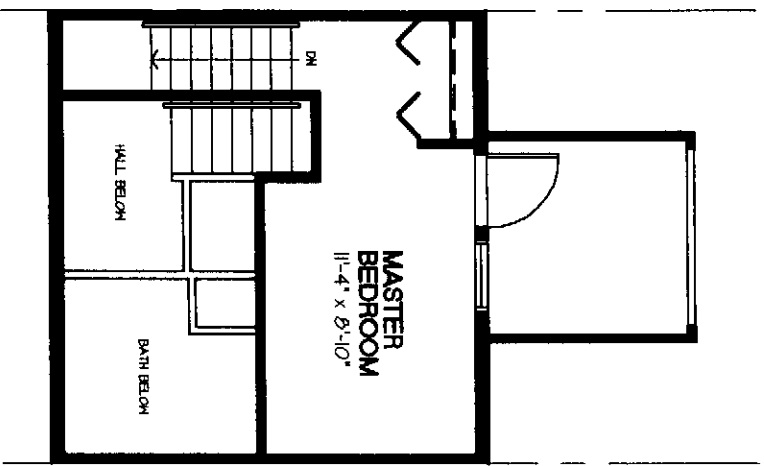
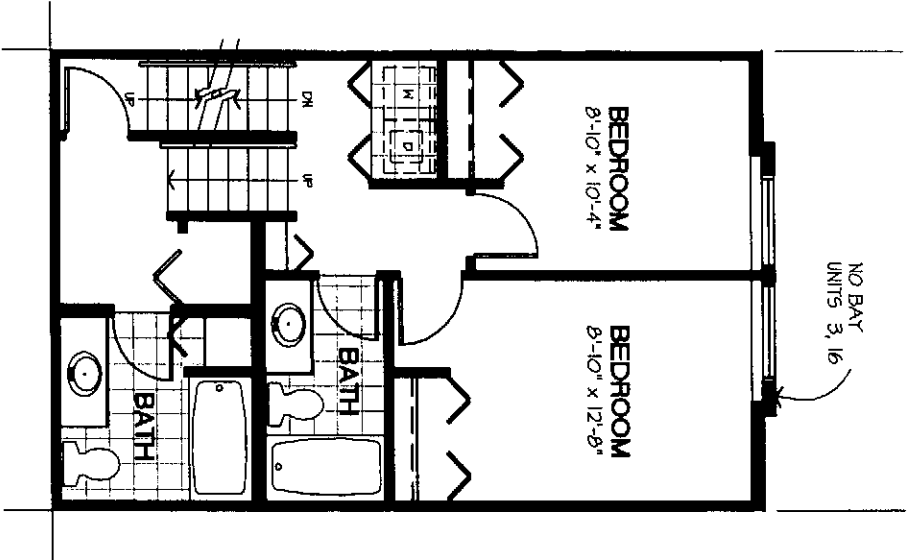
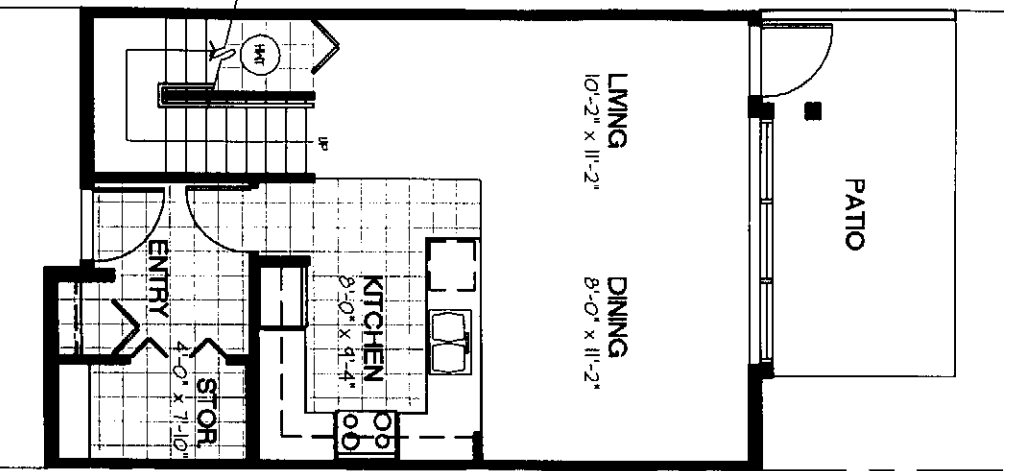


1st FLOOR PLAN



2nd FLOOR PLAN

**UNIT TYPE 'B'**  
**3 BEDROOM TOWNHOUSE**  
 APPROX. 1270 sf  
 ROOM SIZES ARE APPROXIMATE  
**BUILDINGS 1, 2**

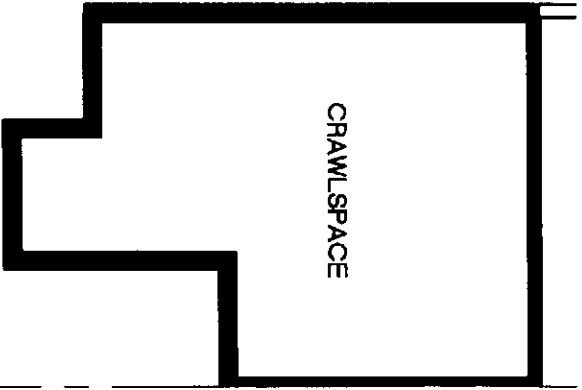


**UNIT TYPE 'C'**  
**3 BEDROOM TOWNHOUSE**  
 APPROX. 1335 sqf  
 ROOM SIZES ARE APPROXIMATE  
**BUILDINGS 1, 2**

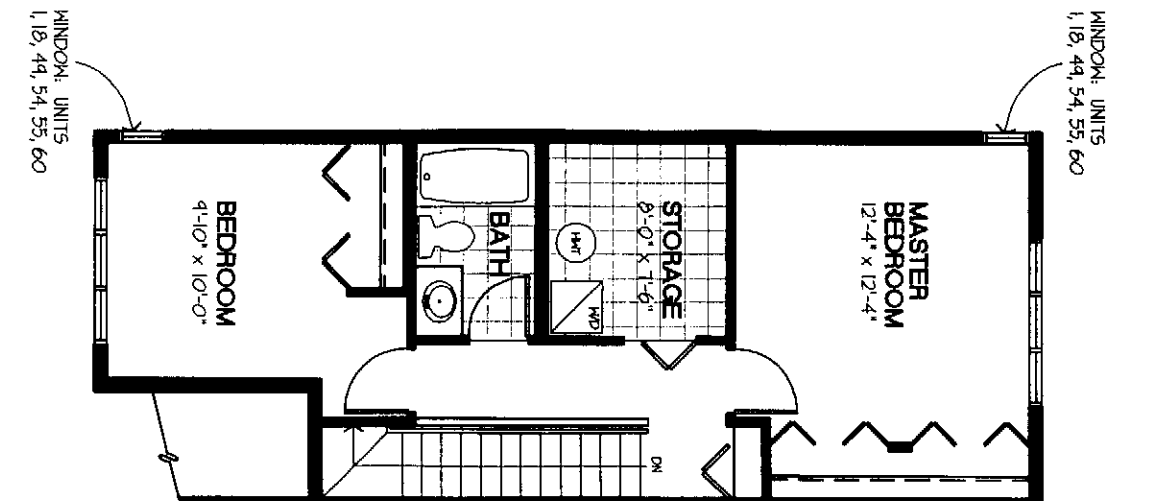
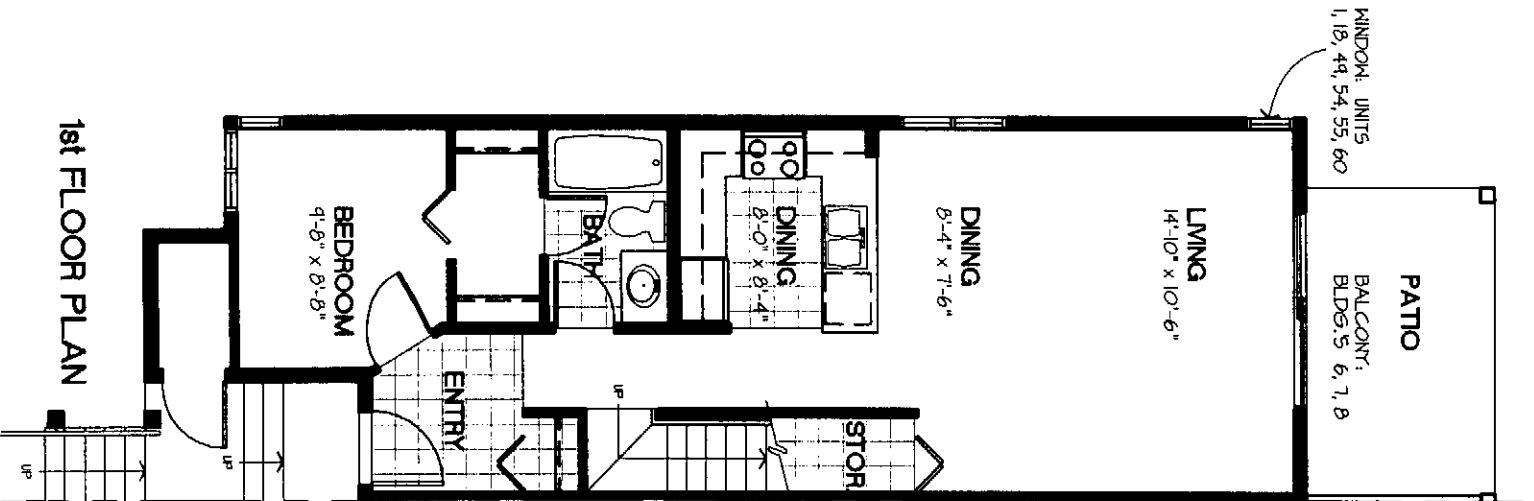
**UNIT TYPE 'D' - END UNIT  
3 BEDROOM TOWNHOUSE**

APPROX. 1286 sf  
ROOM SIZES ARE APPROXIMATE

**BUILDINGS 3, 4, 5, 6,  
7, 8, 10, 11**



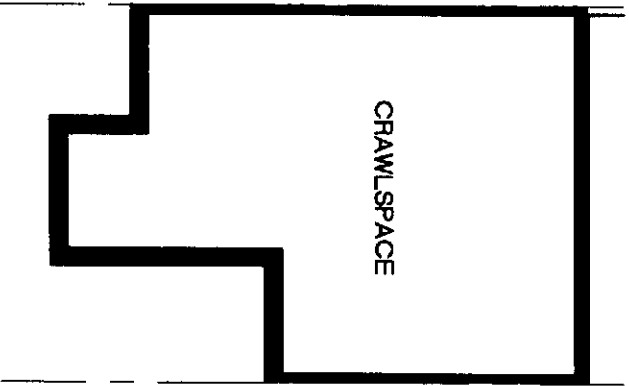
**CRAWLSPACE  
BUILDINGS 6, 7, 8 ONLY**



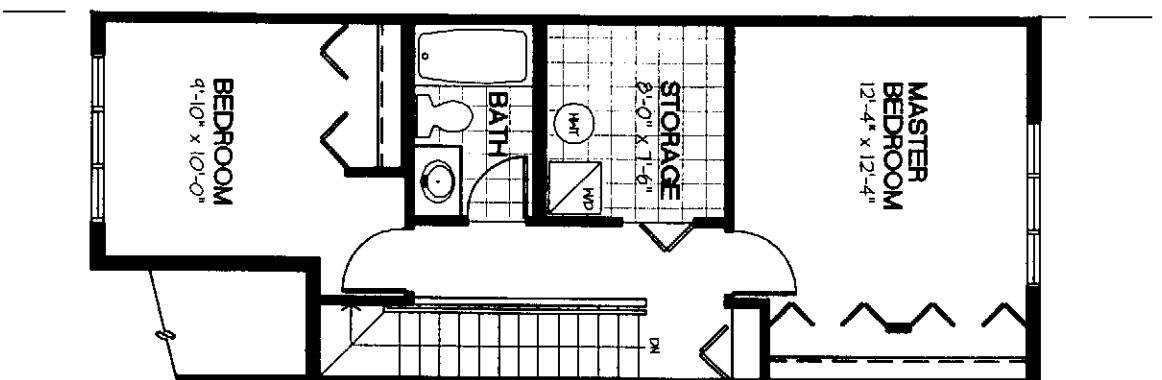
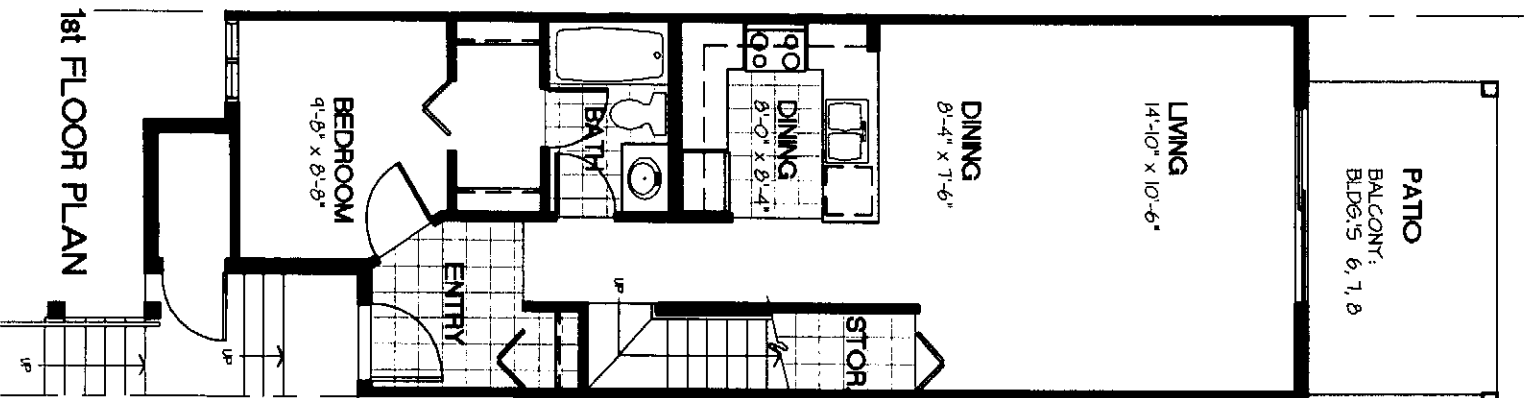
**UNIT TYPE 'D'**  
**3 BEDROOM TOWNHOUSE**

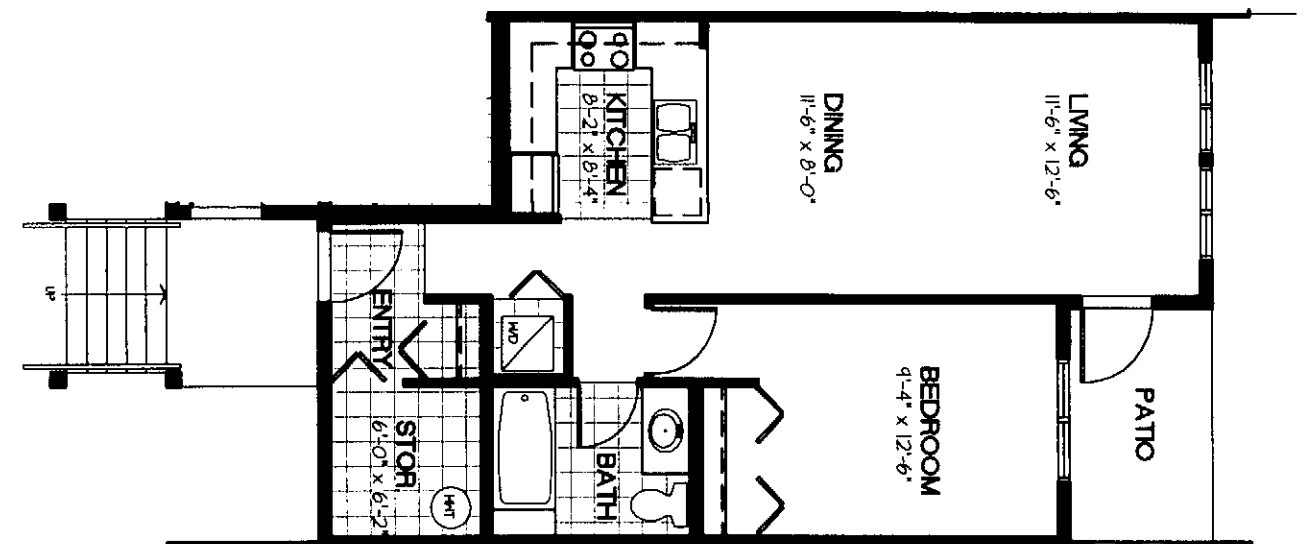
APPROX. 1212 SF  
 ROOM SIZES ARE APPROXIMATE

**BUILDINGS 3, 4, 5, 6,  
 7, 8, 10, 11**

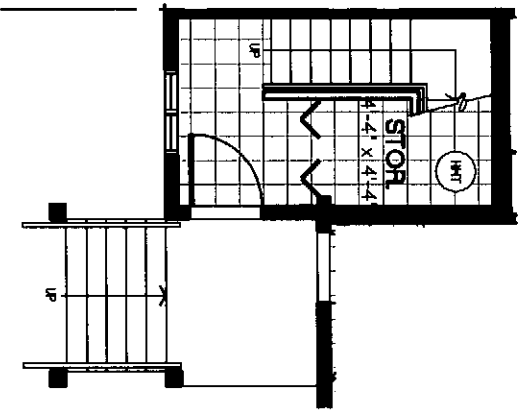
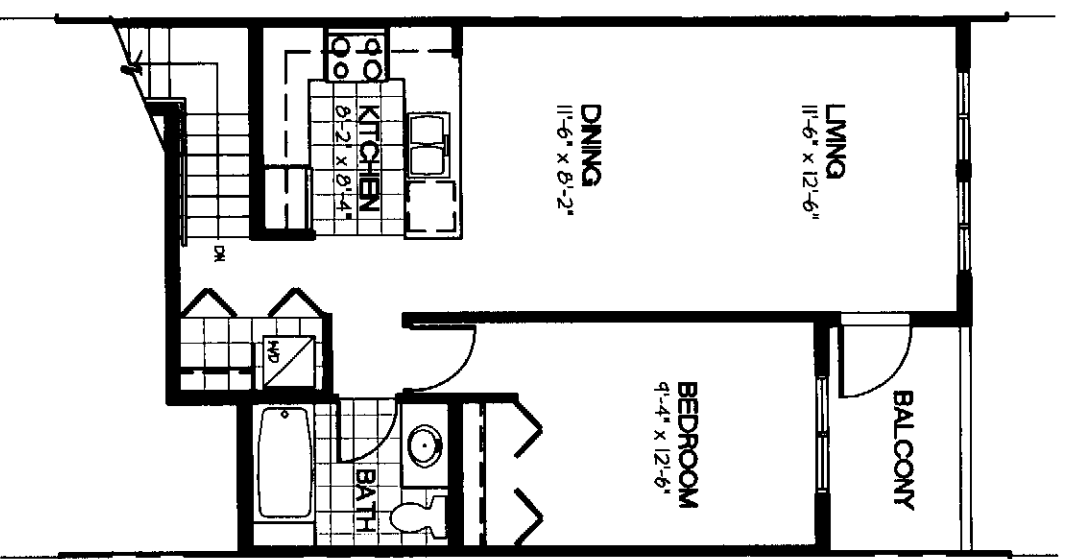


**CRAWLSPACE**  
**BUILDINGS 6, 7, 8 ONLY**



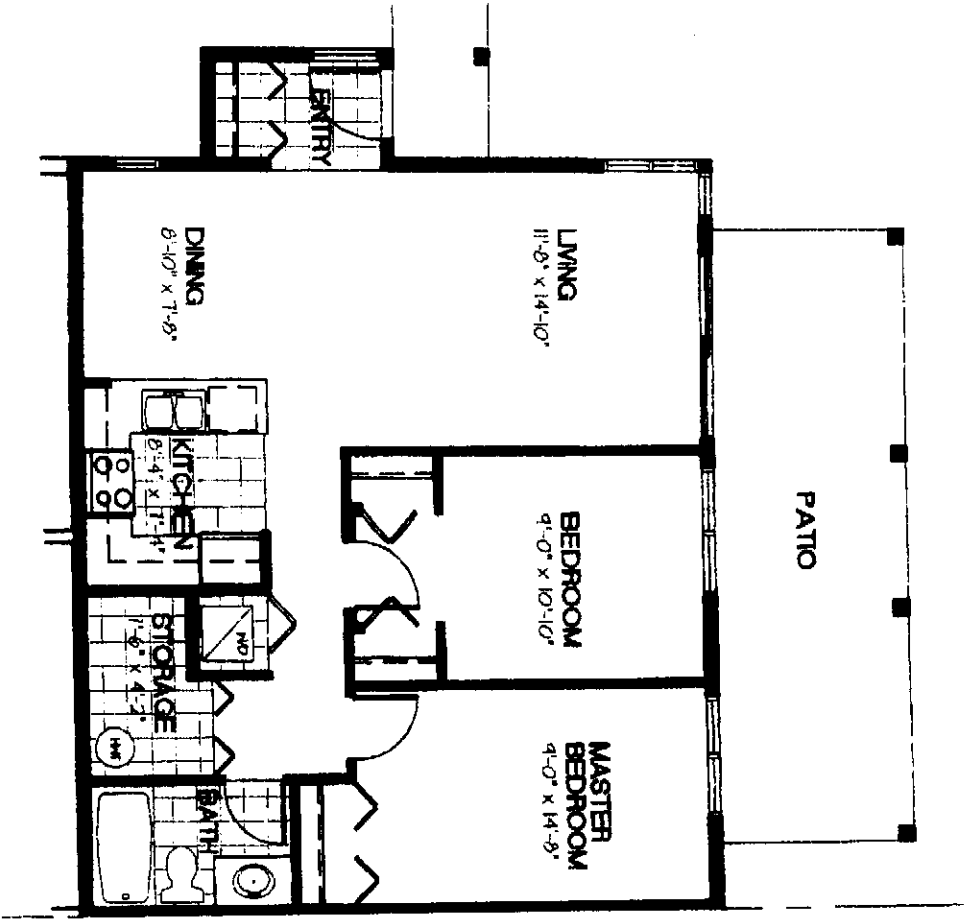


**UNIT TYPE 'E'**  
**1 BEDROOM FLAT**  
 APPROX. 702 sf  
 ROOM SIZES ARE APPROXIMATE  
**BUILDINGS 3, 4, 11**



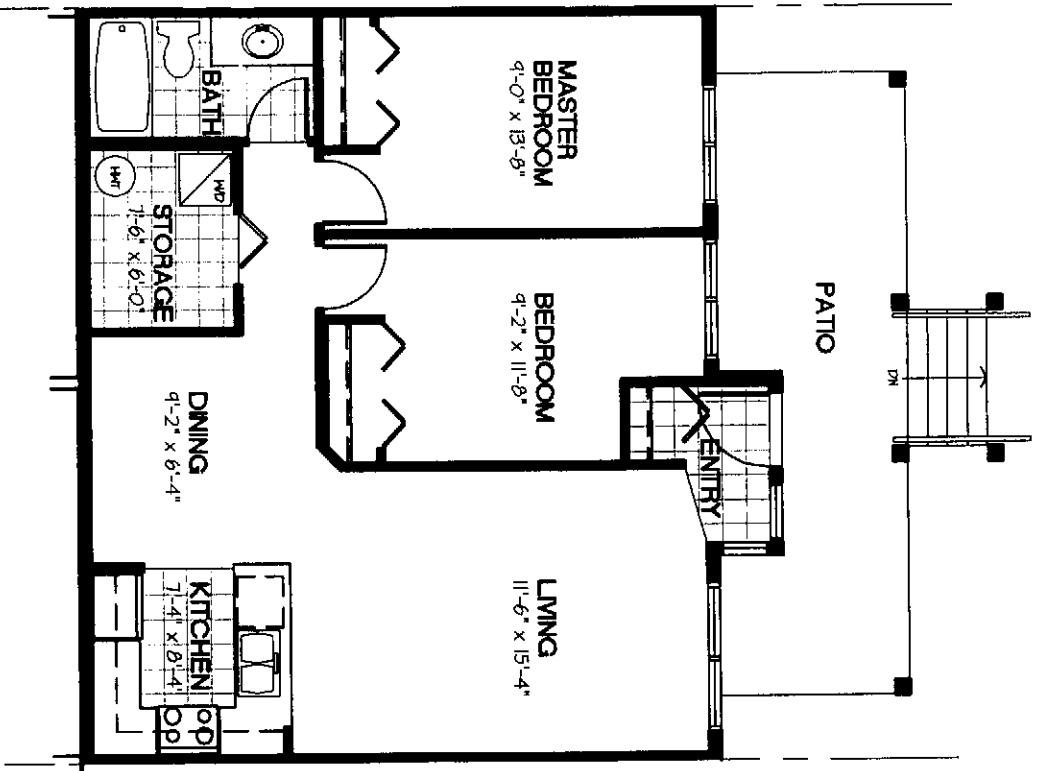
**UNIT TYPE 'F'**  
**1 BEDROOM FLAT**  
 APPROX. 786 sf  
 ROOM SIZES ARE APPROXIMATE  
**BUILDINGS 3, 4, 11**





**UNIT TYPE 'G'**  
**2 BEDROOM FLAT**

APPROX. 875 sf  
 ROOM SIZES ARE APPROXIMATE  
**BUILDINGS 6, 7, 8**



**UNIT TYPE 'H'**  
**2 BEDROOM FLAT**

APPROX. 854 sf  
 ROOM SIZES ARE APPROXIMATE  
**BUILDINGS 6, 7, 8**