

# InMovement

# ***Elevate DeskTop DT2***

Operation Manual



## **Customer Service**

**1 (844) 6IN-MOVE  
(844-646-6683)**

Should you have any questions,  
please call your InMovement representative or call our customer service department  
toll-free number, **1 (844) 646-6683**

Monday - Friday, 7:00 A.M. - 6:00 P.M., Central Time.

## Table of Contents

---

1	SAFETY INSTRUCTIONS	1
2	ELEVATE DESKTOP DT2 ILLUSTRATION, FEATURES, & SPECIFICATIONS	2
3	SETUP	3
4	OPERATION	4
5	ERGONOMICS	4
6	SERVICE AND MAINTENANCE TIPS	5
7	WARRANTY	5

Before using this product, it is essential to read this ENTIRE operation manual and ALL installation instructions.

Avant d'utiliser ce produit, il est indispensable de lire ce manuel d'utilisation dans son INTÉGRALITÉ, ainsi que TOUTES les instructions d'installations.



**CAUTION: Any changes or modifications to this equipment could void the product warranty.**

**Mise en garde : tout changement ou toute modification de ce matériel peut annuler la garantie du produit.**

Any service, other than cleaning or user maintenance, must be performed by an authorized service representative.

### IMPORTANT SAFETY INSTRUCTIONS

**WARNING:** Do not place hands on or near the support bars. Pinch points are created during lifting and lowering the work surface. Failure to follow these instructions may result in serious personal injury.

**WARNING:** Because mounting surface materials can vary widely, it is imperative that you make sure the mounting surface is strong enough to handle mounted product and equipment when raising or lowering the DT2 Desktop.

**CAUTION:** To avoid the potential to pinch cables, it is important to follow the cable routing instructions in this manual. Failure to follow these instructions may result in equipment damage or personal injury.

**CAUTION:** Leave enough slack in cables to allow for full range of vertical motion (13.4" / 34" cm). Failure to heed this may result in property damage and/or personal injury.

**CAUTION:** Keep monitor and laptop bases fully on the work surface. Allowing any part of base or stand to hang off the edge may result in property damage and/or personal injury.

**CAUTION:** Raise work surface slowly. Raising work surface too fast may create an unstable situation resulting in property damage and/or personal injury.

**CAUTION:** It is recommended that monitors be mounted closer to the rear of the work surface in order to prevent tipping when in raised position.

**CAUTION:** Balance the weight of items on work surface from side to side in order for the user to lift an even amount of weight at any given time.

**CAUTION:** Do not exceed maximum weights listed for the product. Serious injury or property damage may occur.

**CAUTION:** Do not lean on the product when it is in a raised position. Product instability may occur which may lead to equipment damage and/or personal injury.

**CAUTION:** When not in use, it is recommended for the user to lower the working surface to its lowest position.

### CONSIGNES DE SÉCURITÉ IMPORTANTES

**AVERTISSEMENT:** Ne placez pas les mains sur les barres de support ni à proximité de ces dernières. Vous risqueriez de vous pincer en montant ou baissant la surface de travail. Le non-respect de ces instructions peut entraîner des blessures graves.

**AVERTISSEMENT:** Assurez-vous de placer l'appareil sur une surface suffisamment solide pour le supporter, ainsi que l'équipement, lorsque vous montez ou baissez le DT2 Desktop.

**MISE EN GARDE:** Afin de ne pas risquer de coincer les câbles, il est important de suivre les instructions de routage de ces derniers fournies dans le manuel. Le non-respect de ces instructions peut entraîner des dommages matériels ou des blessures.

**MISE EN GARDE:** Ne tendez pas complètement les câbles afin qu'ils puissent s'étirer lorsque l'appareil est en position verticale (13.4" / 34" cm). Le non-respect de ces instructions peut entraîner des dommages matériels ou des blessures.

**MISE EN GARDE:** Placez le moniteur et les bases de l'ordinateur bien à plat sur la surface de travail, au risque d'entraîner des dommages matériels ou des blessures.

**MISE EN GARDE:** Montez lentement la surface de travail. Procédez lentement, de sorte à ne pas entraîner des dommages matériels ou des blessures.

**MISE EN GARDE:** Nous vous recommandons de monter les moniteurs à proximité de l'arrière de la surface de travail afin d'éviter tout risque de basculement lorsque l'appareil est en position verticale.

**MISE EN GARDE:** Équilibrez le matériel de part et d'autres de la surface de travail, pour que l'utilisateur soulève la même quantité de poids.

**MISE EN GARDE:** Ne dépassez pas la quantité de poids maximale indiquée sur l'appareil, au risque d'entraîner des dommages matériels ou des blessures.

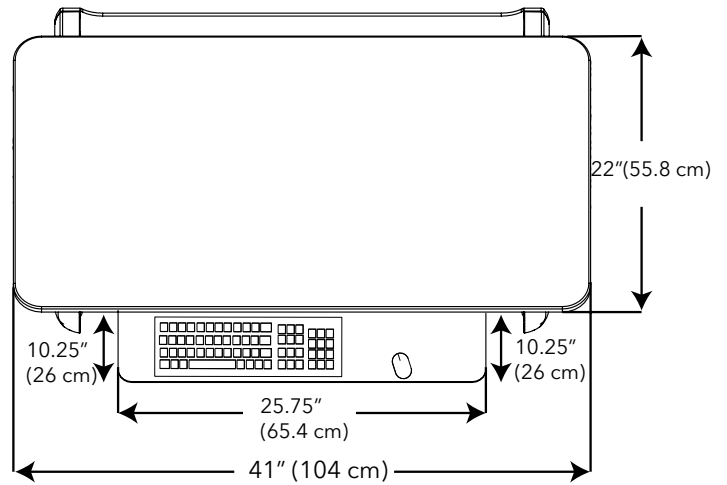
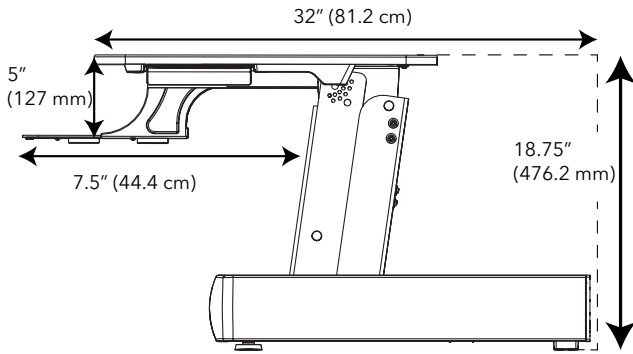
**MISE EN GARDE:** Ne vous penchez pas sur l'appareil lorsqu'il est en position verticale. Une instabilité peut se produire et entraîner des dommages matériels ou des blessures.

**MISE EN GARDE:** Lorsque vous n'utilisez pas l'appareil, abaissez au maximum la surface de travail.

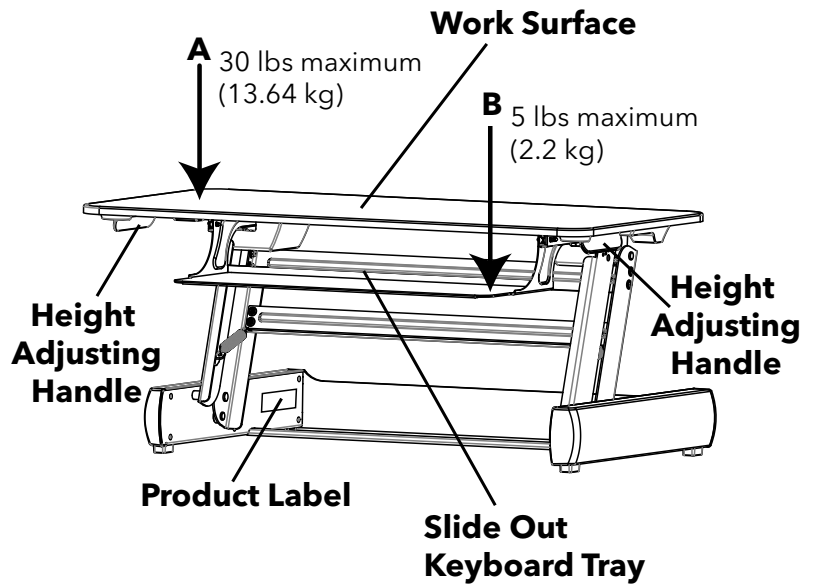
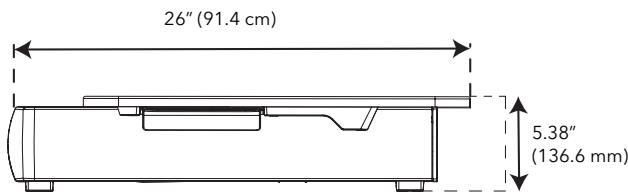
**SAVE THESE INSTRUCTIONS FOR FUTURE REFERENCE. / CONSERVER CES INSTRUCTIONS POUR TOUT USAGE ULTÉRIEUR.**

# 2 ELEVATE DESKTOP DT2 DESIGN ILLUSTRATION, FEATURES, & SPECIFICATIONS

**Fully Extended Profile View**



**Fully Lowered Profile View**



**CAUTION:** Do not exceed maximum listed weight capacity. serious injury or property damage may occur!

**CAUTION:** When not in use, it is recommended for the user to lower the desk to its lowest position.

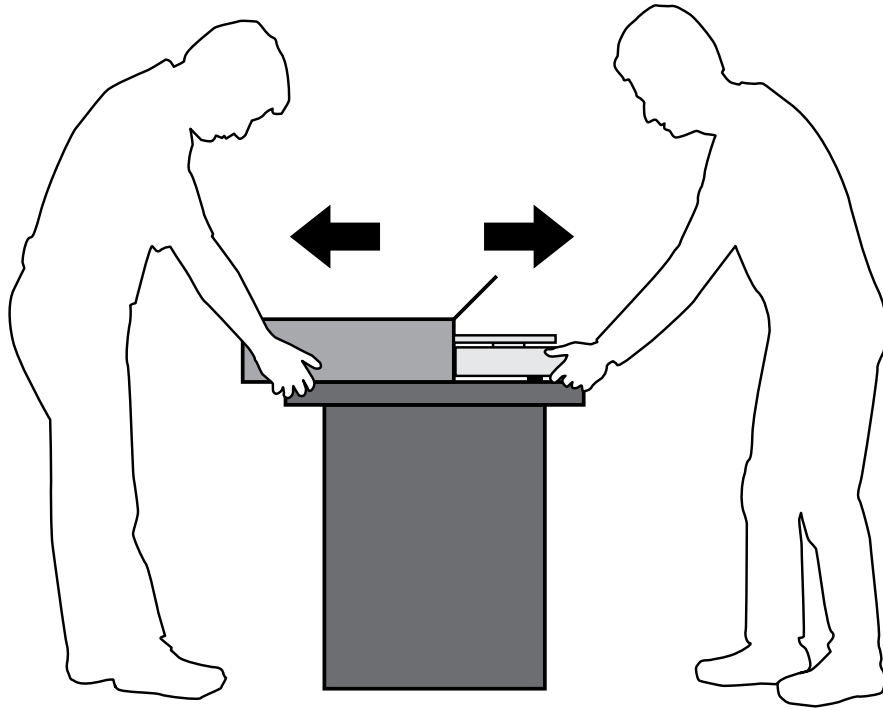
**Maximum Weight on Work Surface:** 30 lbs. / 13.64 kg

**Maximum Weight on Keyboard Tray (extended):** 5 lbs. / 2.2 kg

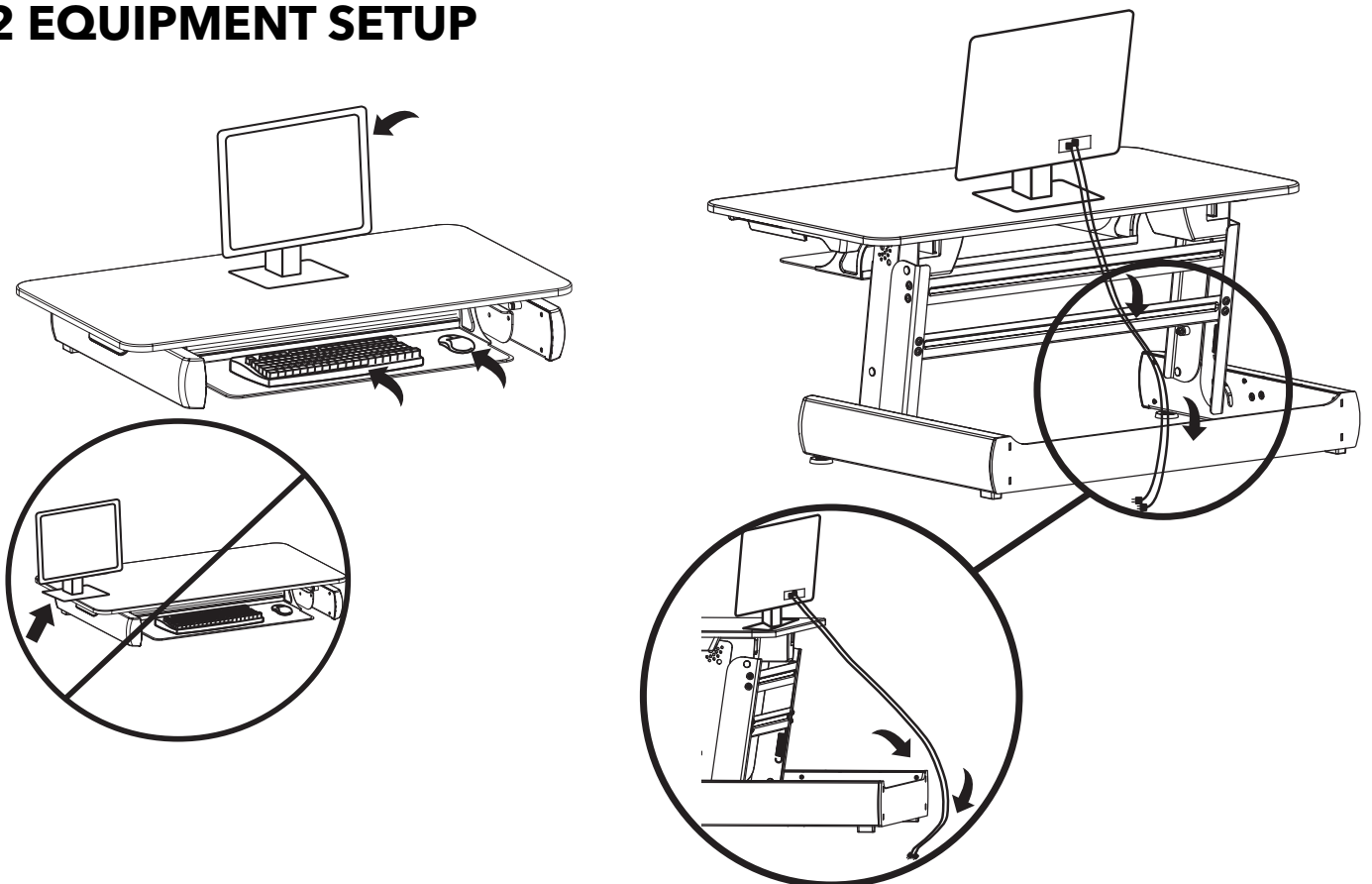
PHYSICAL DIMENSIONS (ASSEMBLED OUT OF BOX)			
Length	Width	Height	Weight
26 in. (66 cm)	41 in. (104 cm)	5.38 in. (At lowest position) (13.6 cm)	58 lbs. (26.4 kg)

# 3 SETUP

## 3.1 UNPACKING



## 3.2 EQUIPMENT SETUP



# 4 OPERATION

## How to Adjust the Height of the Elevate DeskTop DT2

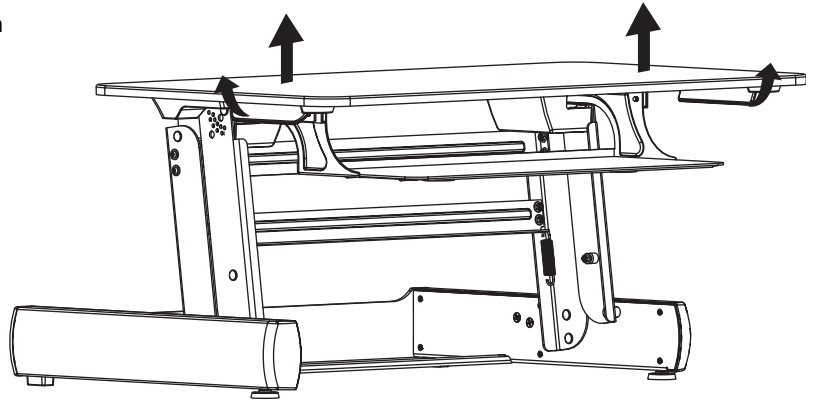
After placing the unit where it will be used, check its stability.

Place palms of hands on work surface and fingers on height adjustment handles.

Push down with palms on work surface and then squeeze handles with fingers to unlock the work surface.

Continue to squeeze handles and adjust work surface to desired height.

Release the handles. You may need to slightly lift or lower the work surface to lock into position. There will be a click as the work surface locks into position.



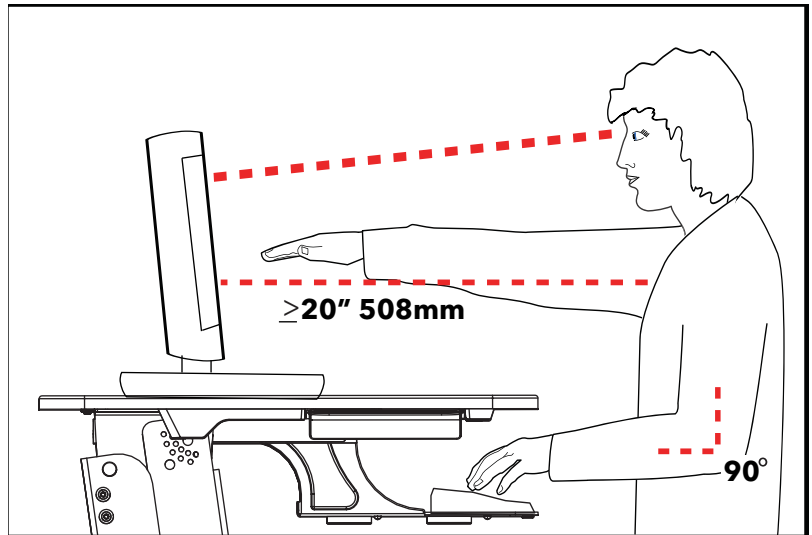
**\*Note:** There is a noise that comes from the locking mechanism when squeezing the handles to adjust height as well as when locking the work surface back in place.

# 5 ERGONOMICS

## Posture Recommendations

The human body was designed to spend extraordinary amounts of time in a neutral posture. Here are some tips to help you maintain the best neutral posture while at the Elevate DeskTop DT2:

1. The desired height of the computer monitor is when the user is looking straight at the top  $\frac{3}{4}$  of the screen. Position the top of the screen slightly below eye level.
2. The elbows of the user should be at a 90 degree angle when using the keyboard tray. Position the screen an arm's length from face—at least 20" (508 mm).
3. Chest should always remain open with shoulders back and the upper arms should be kept close to the body.
4. Use an ergonomic keyboard that keeps the hands further apart and thumbs higher than pinkies. Position the back (furthest point from user) of the keyboard higher than the front of the keyboard. Wrists should not be pronated (turned down). Wrists should also rest comfortably to prevent swaying.
5. The mouse should be located as close as possible to the body.
6. Ensure you can see the entire monitor by shifting your eyes, but not tilting your head. Center the display so that the top edge of the monitor is at 0 degrees, and the bottom display is on a -15 degree sight line from your eyes. It is also generally recommended that the monitor is at arm's length from the user.



# 6 SERVICE & MAINTENANCE TIPS

---

**Clean the top using a non-abrasive cleaner, such as mild soap and water.**

## **InMovement Compatible Cleaners**

Mild soap and water or a mild non-abrasive household cleaner can also be used to clean the exterior surfaces. Use a soft microfiber cloth only. DO NOT use abrasive cleaners. DO NOT apply cleaners directly to the equipment surfaces.

# 7 WARRANTY

---

### **WHAT IS COVERED:**

This InMovement commercial product ("Product") is warranted to be free of all defects in material and workmanship.

### **WHO IS COVERED:**

The original purchaser or any person receiving a newly purchased Product as a gift from the original purchaser. Warranty will be voided on subsequent transfers. Warranty is valid in the United States of America and Canada.

### **HOW LONG IS IT COVERED:**

The Elevate Desktop DT2 is under warranty for 1 year from date of purchase.

### **WHO PAYS SHIPPING & INSURANCE FOR SERVICE:**

If the Product or any warranted part must be returned to a service facility for repairs, InMovement will pay all shipping and insurance charges during the warranty period (within the United States only). The purchaser is responsible for shipping and insurance charges after the warranty has expired.

### **WHAT WE WILL DO TO CORRECT COVERED DEFECTS:**

We will ship to you any new or rebuilt replacement part or component, or, at our option, replace the Product. Such replacement parts are warranted for the remaining portion of the original warranty period.

### **WHAT IS NOT COVERED:**

Any failures or damage caused by unauthorized service, misuse, accident, negligence, improper assembly or installation, debris resulting from any construction activities in the Product's environment, rust or corrosion as a result of the Product's location, alterations or modifications without our written authorization or by failure on your part to use, operate and maintain the Product as set out in your User Manual ("Manual"). All terms of this warranty are void if this Product is moved beyond the borders of the United States of America and Canada. Terms are then subject to those provided by that country's local authorized InMovement Representative.

### **WHAT YOU MUST DO:**

Retain proof of purchase. Use, operate and maintain the Product as specified in the Manual; notify the place of purchase of any defect within 10 days after discovery of the defect; if instructed, return any defective part for replacement or, if necessary, the entire Product for repair. InMovement reserves the right to decide whether or not a product is to be returned for repair.

### **USER MANUAL:**

It is VERY IMPORTANT THAT YOU READ THE MANUAL before operating the Product.

### **PRODUCT REGISTRATION:**

Please retain your proof of purchase, such as your bill of sale or receipt.

### **HOW TO GET PARTS & SERVICE:**

Refer to page one of this manual for your local service contact information. Reference your name, address, part number and date code of your product. Part number and date code are shown on product label. They will tell you how to get a replacement part, or, if necessary, arrange for service where your Product is located.

### **EXCLUSIVE WARRANTY:**

THIS LIMITED WARRANTY IS IN LIEU OF ALL OTHER WARRANTIES OF ANY KIND EITHER EXPRESSED OR IMPLIED, INCLUDING BUT NOT LIMITED TO THE IMPLIED WARRANTIES OF MERCHANTABILITY AND FITNESS FOR A PARTICULAR PURPOSE, AND ALL OTHER OBLIGATIONS OR LIABILITIES ON OUR PART. We neither assure nor authorize any person to assure for us any other obligation or liability concerning the sale of this Product. Under no circumstances shall we be liable under this warranty, or otherwise, for any damage to any person or property, including any lost profits or lost savings, for any special, indirect, secondary, incidental or consequential damages of any nature arising out of the use of or inability to use this Product. Some states do not allow the exclusion or limitation of implied warranties or of liability for incidental or consequential damages, so the above limitations or exclusions may not apply to you. Warranties may vary outside the U.S. Contact InMovement for details.

### **CHANGES IN WARRANTY NOT AUTHORIZED:**

No one is authorized to change, modify or extend the terms of this limited warranty.

### **EFFECT OF U.S. STATE LAWS:**

This warranty gives you specific legal rights and you may have other rights which vary from state to state.