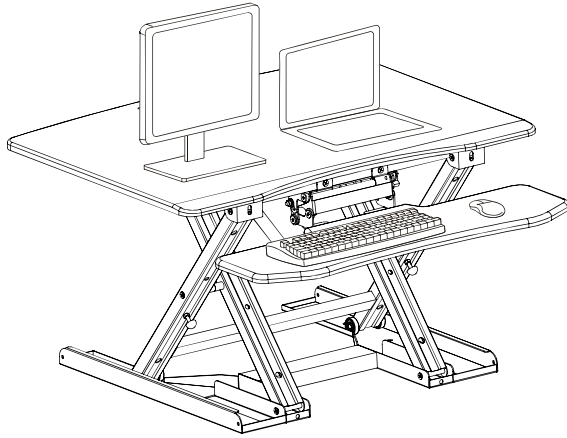




---

## 31.5" x 24.4" Sit-Stand Desktop Workstation

### Instruction Manual



**SKU: DESK-V000Y**



Scan the QR code with your mobile device or follow the link for helpful videos and specifications related to this product.

<https://vivo-us.com/products/desk-v000y>



help@vivo-us.com



www.vivo-us.com

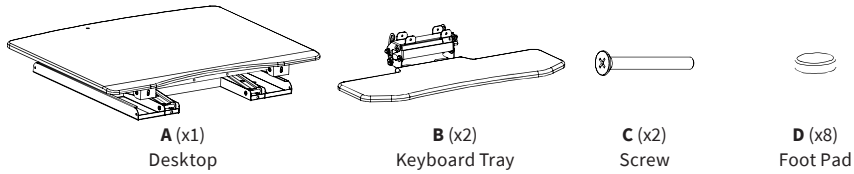


1-800-371-5654

**⚠ WARNING!**

If you do not understand these directions, or if you have any doubts about the safety of the installation, please call a qualified technician. Check carefully to make sure there are no missing or defective parts. Improper installation may cause damage or serious injury. Do not use this product for any purpose that is not explicitly specified in this manual and do not exceed weight capacity. We cannot be liable for damage or injury caused by incorrect assembly or inappropriate use.

**PACKAGE CONTENTS**



**TOOLS NEEDED**



**⚠ WARNING**  
**PINCH POINT**

DO NOT place hands on or near support bars. Moving parts can crush and cut. Pinch points are created during lifting and lowering the worksurface. Failure to follow these instructions may result in serious personal injury.



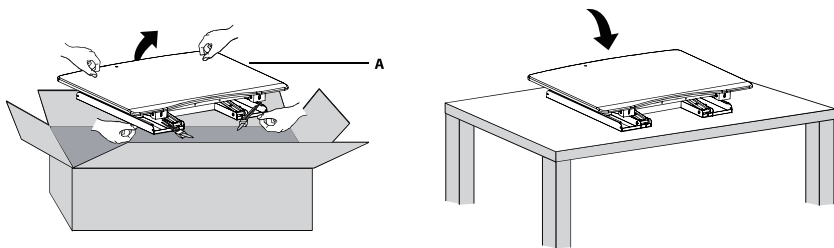
DO NOT EXCEED WEIGHT CAPACITY.  
Failure to do so may result in serious injury.



**ASSEMBLY STEPS**

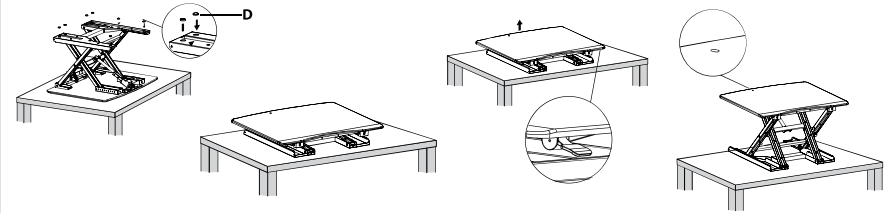
**STEP 1**

Carefully remove the desktop (A) from the packaging and lay on a flat surface.



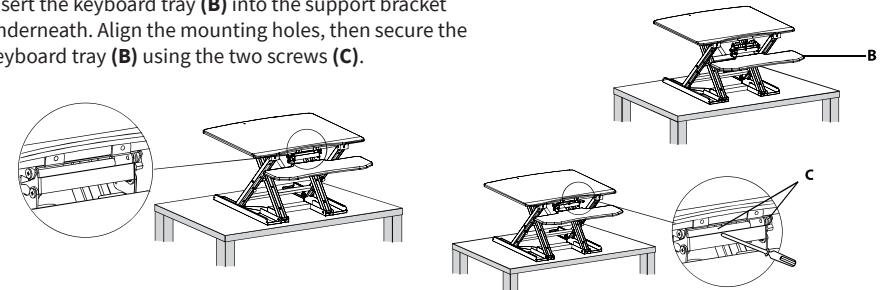
**STEP 2**

Cut the two ties from the desk (A), then lift the handle to raise the desk (A). If a monitor arm will be used, remove the plug from the grommet hole. Add foot pads (D) to bottom of the desktop.



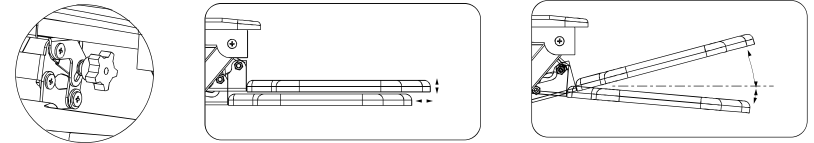
**STEP 3**

Insert the keyboard tray (B) into the support bracket underneath. Align the mounting holes, then secure the keyboard tray (B) using the two screws (C).



**STEP 4**

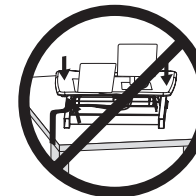
Loosen the knob to adjust the keyboard tray tilt. The tray can also be adjusted forward and up slightly at this time. Tighten the knob to secure the tray position.



**⚠ CAUTION!**



Keep monitor and laptop base fully on the desktop.



Follow the cable routing instructions to avoid the potential to pinch cables.



Leave enough slack in cable to allow for full range of vertical motion (15" / 38 cm).



Raise desktop slowly to keep items stable.

Failure to follow these instructions may result in property damage and/or personal injury.



Love your new VIVO setup and want to share?

Tag us in your photo! **@vivo\_us**

Last Updated: 10/19/2018



If any parts are received damaged or defective, please contact us. We are happy to replace parts to ensure you have a fully functioning product.



[help@vivo-us.com](mailto:help@vivo-us.com)



[www.vivo-us.com](http://www.vivo-us.com)



1-800-371-5654

For more VIVO products, check out our website at:  
[www.vivo-us.com](http://www.vivo-us.com).