

Micro Swiss FlowTech™ Hotend for Creality Ender-3 V3

INSTALLATION INSTRUCTIONS

Tools Required:

1.5mm Allen wrench
2.0mm Allen wrench

6mm wrench
7mm wrench

What's in the box:

Silicone Sock
Heater Core
0.4mm Nozzle

Titanium Mounting Screw (2x)
Copper Thermal Adapter
Thermal Paste

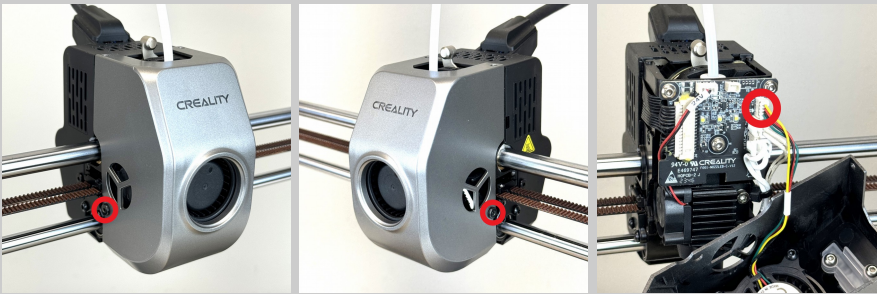
STEP 1



SAFETY / PREPARATION

- Unload the filament from the printer.
- Allow the hotend to cool down to room temperature.
- Power off the printer.
- Disconnect the power cable.

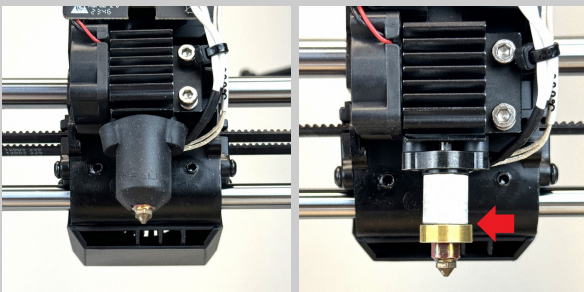
STEP 2



REMOVE THE FAN SHROUD

- Remove the screws from both sides of the fan shroud. (2.0mm Allen wrench)
- Pivot the fan shroud back and then pull it up off of the carriage.
- Disconnect the part cooling fan cable from the breakout board.

STEP 3



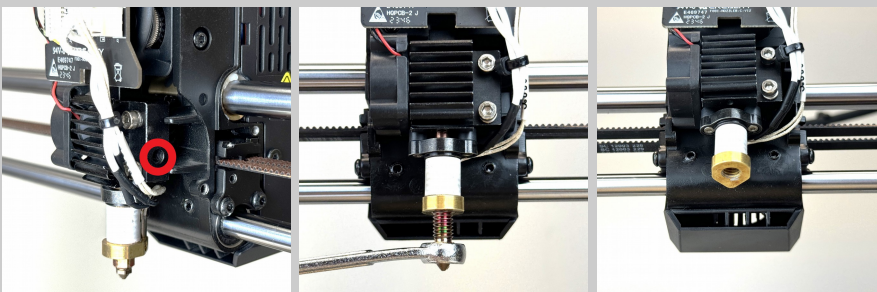
REMOVE THE SILICONE SOCK

⚠ Verify the hotend is at room temperature before touching it.

- Pull the silicone sock off of the heater core.

There is a ridge near the bottom of the stock hotend so the silicone sock will need to be pinched and pulled over the ridge.

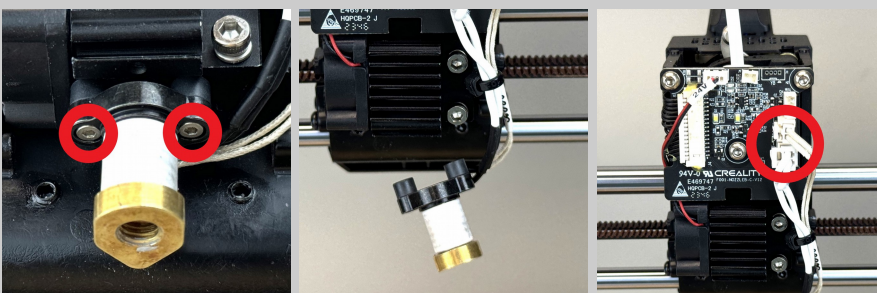
STEP 4



REMOVE THE NOZZLE

- Loosen the set screw located on the right side of the heatsink. (2.0mm Allen wrench)
- Unscrew the original nozzle. (6mm wrench)

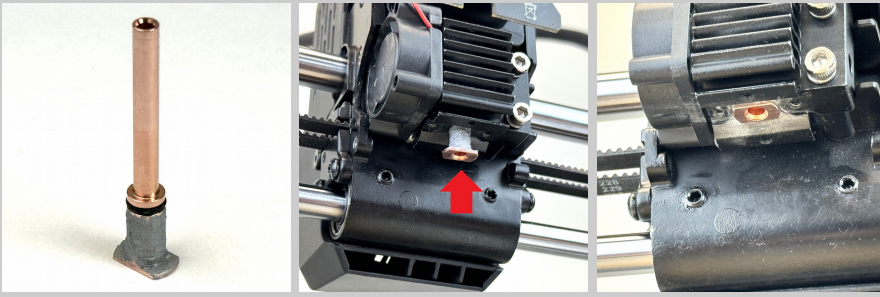
STEP 5



REMOVE THE HEATER CORE

- Remove the two screws that attach the heater core to the heatsink. (1.5mm Allen wrench)
- Disconnect the heater and thermistor cables from the breakout board.

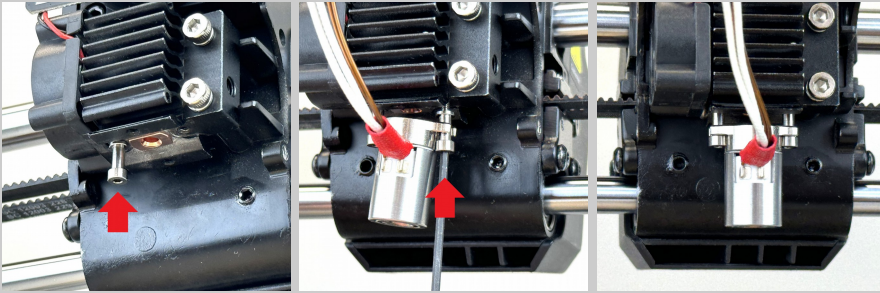
STEP 6



INSTALL THE COPPER THERMAL ADAPTER

- Spread a thin coat of thermal paste to the copper thermal adapter, covering the surface between the bottom flange and the black o-ring (excluding the o-ring itself).
- Insert the copper thermal adapter into the heatsink.

STEP 7



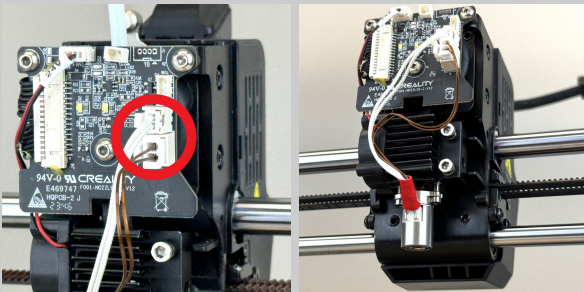
FASTEN THE HEATER CORE

- Attach the heater core to the heatsink using the titanium mounting screws. (1.5mm Allen wrench)

Position the heater core so that the cables extend towards the back of the printer.

The heater core will still be free to wobble around even after tightening the two screws.

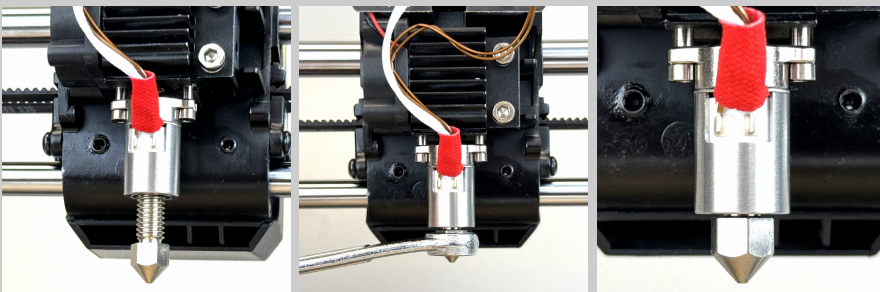
STEP 8



CONNECT THE HEATER CORE

- Attach both the heater and thermistor connectors to the matching ports on the breakout board.

STEP 9



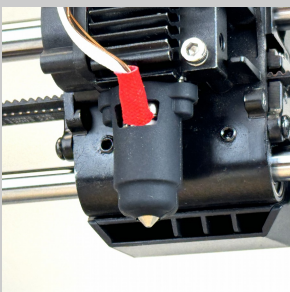
INSTALL THE NOZZLE

- Install and tighten the nozzle until it is snug. (7mm wrench)

Recommended torque: 15 inch-pounds / 1.7 Newton Meters.

There is no need to heat the hotend before tightening the FlowTech nozzle.

STEP 10



INSTALL THE SILICONE SOCK

- Align the cutout slot in the silicone sock with the heater core cables.
- Push the silicone sock up until it wraps around the top of the heater core.

STEP 11



REINSTALL THE FAN SHROUD

- Reattach the part cooling fan connector to the breakout board.
- Place the fan shroud over the print head.
- Install the two screws to secure the fan shroud. (2.0mm Allen wrench)