

Micro Swiss FlowTech™ Hotend for Creality K1 / K1 Max

INSTALLATION INSTRUCTIONS

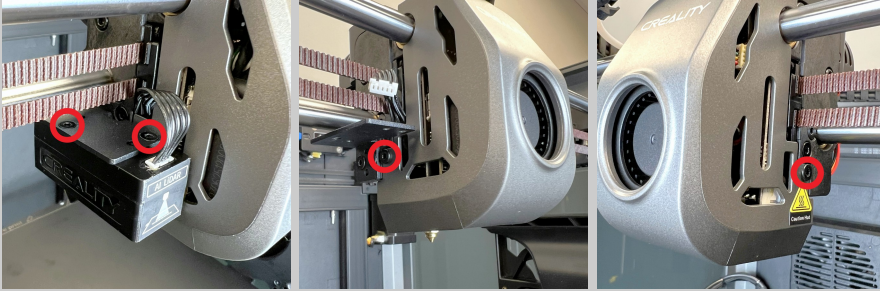
Tools Required:

- 1.5mm Allen wrench
- 2.0mm Allen wrench
- 7mm wrench

What's in the box:

- Silicone Sock
- Heater Core
- 0.4mm Nozzle
- Copper Thermal Adapter
- Titanium Mounting Screw (2x)

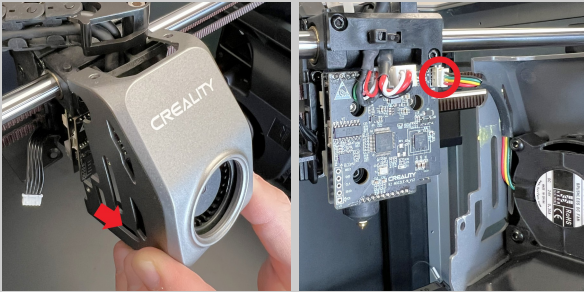
STEP 1



UNSCREW THE FAN SHROUD

- (Creality K1 Max Only)*
- Remove the two screws holding the LiDAR sensor. (2.0mm Allen Wrench)
 - Remove the screws from both sides of the fan shroud. (2.0mm Allen Wrench)

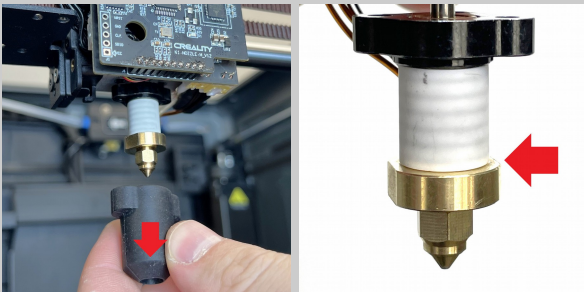
STEP 2



REMOVE THE FAN SHROUD

- Pivot the bottom of the fan shroud forward and then pull the shroud up off of the two stubs.
- Disconnect the part cooling fan connector from the breakout board.

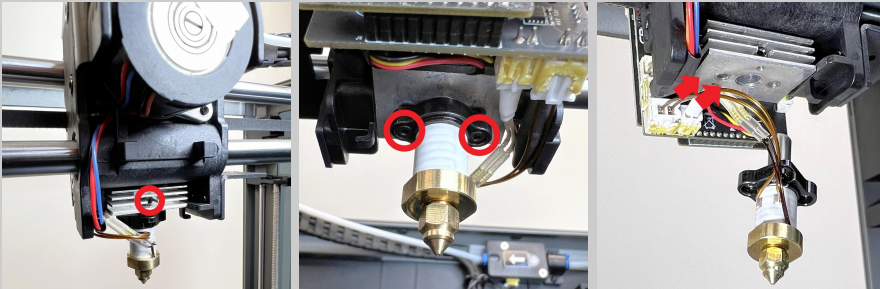
STEP 3



REMOVE THE SILICONE SOCK

- ⚠ For your safety - verify the hotend is at room temperature before touching it.**
 - Pull the silicone sock off of the heater core.
- There is a ridge near the bottom of the stock hotend so the silicone sock will need to be pinched and pulled over the ridge.*

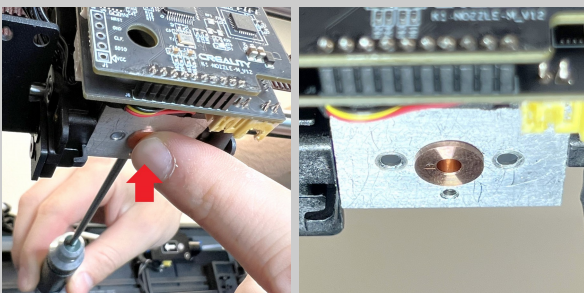
STEP 4



REMOVE THE HOTEND

- Loosen the set screw on the back of the cooling block. (2.0mm Allen wrench)
- Remove the two screws holding the hotend. (1.5mm Allen wrench)
- Disconnect the heater and thermistor connectors.

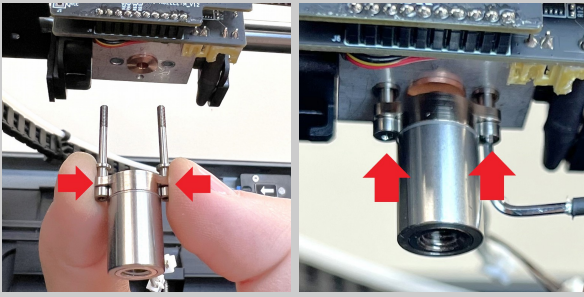
STEP 5



INSTALL THE THERMAL ADAPTER

- Insert the copper thermal adapter into the cooling block.
- Tighten the set screw on the back of the cooling block while pressing the copper thermal adapter up. (2.0mm Allen wrench)

STEP 6



INSTALL THE HEATER CORE

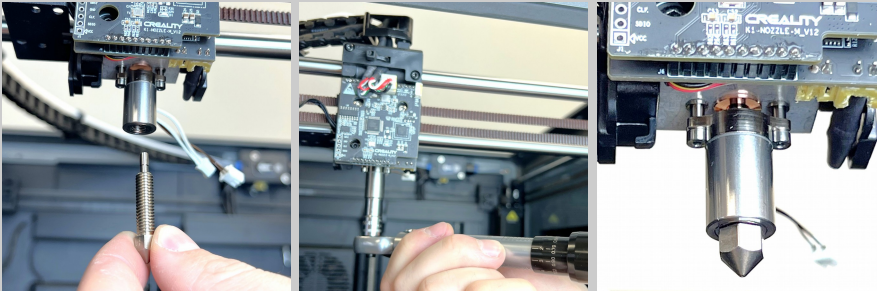
- While holding the heater core along with the two titanium mounting screws on each side, push the screws into the cooling block.

The heater core wires should face the rear of the 3D printer.

- Tighten the screws until the shoulder bottoms out against the cooling block. (1.5mm Allen wrench)

The heater core will still be free to wobble around even after tightening the two screws.

STEP 7



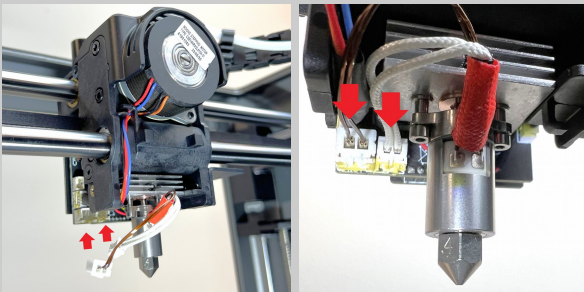
INSTALL THE NOZZLE

- Tighten the nozzle until it is snug. (7mm wrench)

Recommended torque: 15 inch-pounds / 1.7 Newton Meters.

There is no need to heat the hotend before tightening the FlowTech nozzle.

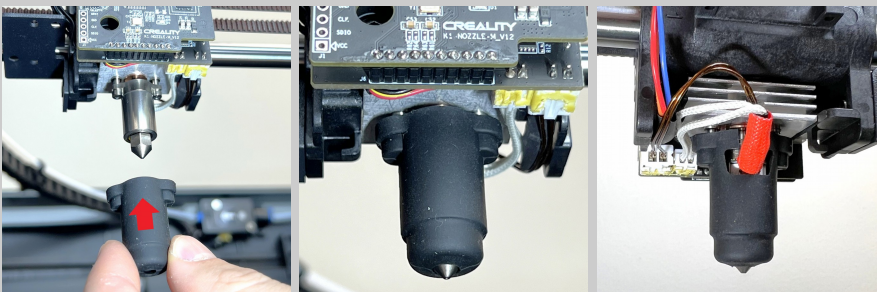
STEP 8



CONNECT THE HEATER CORE

- Attach both the heater and thermistor connectors to the matching ports on the breakout board.

STEP 9



INSTALL THE SILICONE SOCK

- Align the cutout slot in the silicone sock with the cables located on the back of the heater core.

- Push the silicone sock up until it wraps around the top of the heater core.

STEP 10



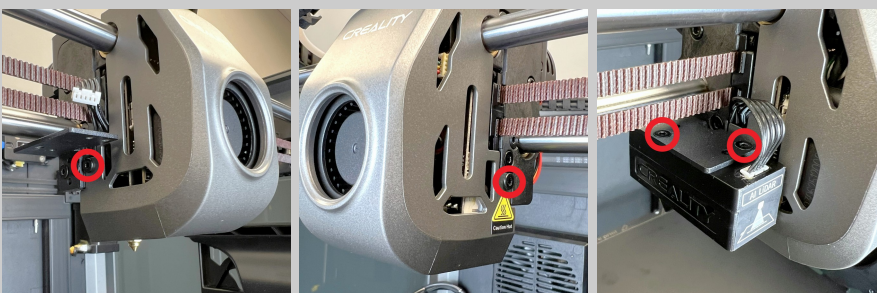
REATTACH THE FAN SHROUD

- Connect the fan cable to the breakout board.

- Align the top of the fan shroud with the studs on the top of the print head.

- Pivot the bottom of the fan shroud back until the shroud is seated properly.

STEP 11



SECURE THE FAN SHROUD AND SENSOR

- Reinstall the screws holding the left and right side of the fan shroud. (2.0mm Allen wrench)

(Creality K1 Max Only)

- Reattach the LiDAR sensor to the mounting bracket using two screws. (2.0mm Allen wrench)