



How to Install a Custom ICC Color Profile for Your Pixio® Monitor

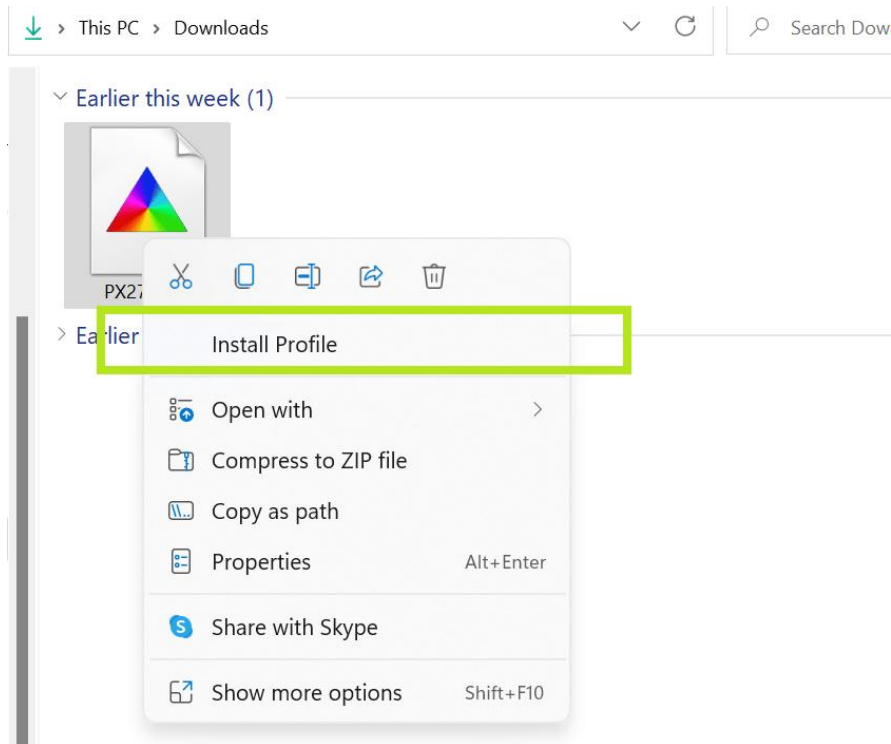
ICC or ICM files, also referred to as color profiles, include configuration information which enables you to readjust the color presentation on your screen. This feature proves beneficial when seeking a precise alignment of colors on your display with those of a specific device such as printer, camera or scanner. It can also be useful if you're aiming to optimize color representation on your screen.

For our Pixio® monitors, we've created tailored .icm files to aid you in achieving the optimum color output. Whether you're using a Windows or Mac system, the installation process is straightforward and effortless.

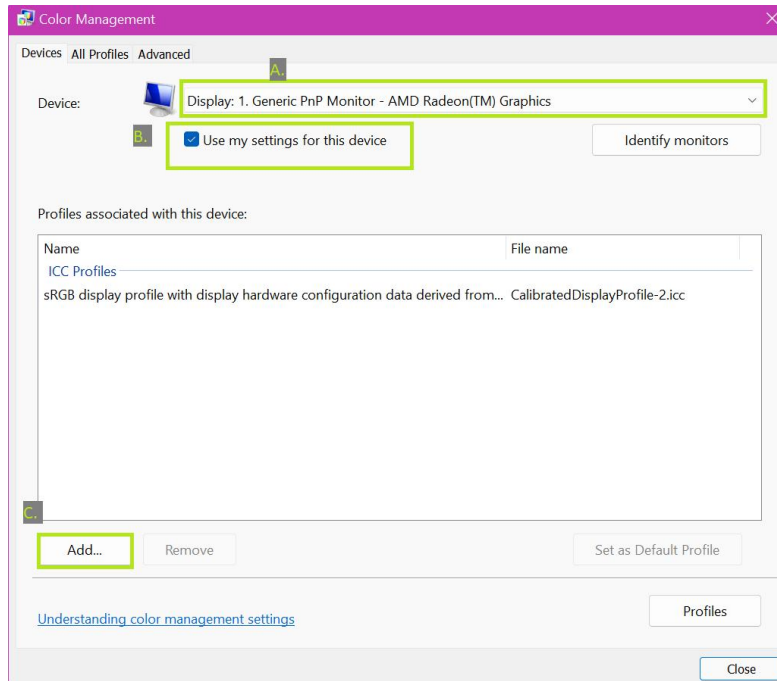


Install Custom ICC on Windows 7/10/11

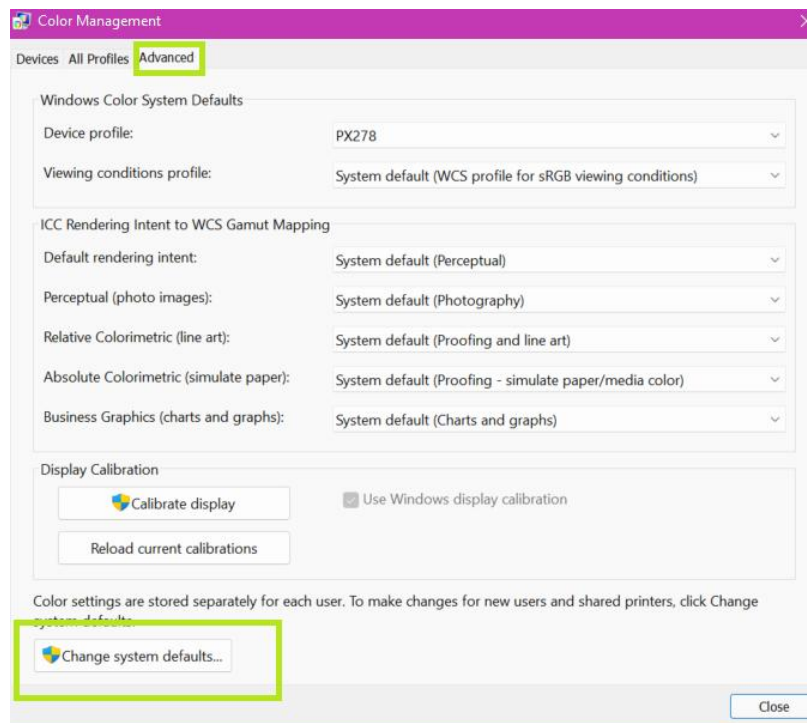
1. Open the downloaded ICC file. Right-click on the desired color profile and select “Install profile.” This will load the selected color profile into your color management options.



2. Go to Color Management in your windows settings by typing “color management” into the Windows search bar and selecting it on the list. (Or open Start and search for “Color Management.”)
3. In Color Management, select the “Devices” tab (this is the default tab). Select your Pixio® monitor from the drop-down list.
Important: If you have a multi-monitor setup, all monitors connected will appear in this list. You must select a color profile individually for each of your specific monitors in a multi-monitor setup.
4. Click the “Use my settings for this device” option.
5. Click the “Add” button in the lower left-hand corner of the “Devices” box. (If the button is grayed out, you need to enable the checkbox from Step 4).



6. Select the color profile matching your Pixio® monitor model and click “OK”.
7. [Optional] If you have a multi-monitor setup consisting of the same model of Pixio® monitors, it is recommended to set your custom color profile as the default color profile. To do this simply ensure your Pixio® ICC profile is highlighted and select “Set as Default Profile” in the Color Management. The color profile will have the “(default)” tag, confirming the custom ICC profile is now the default color profile.



The change may be subtle, but your profile should now be active. From here you may go into your Pixio® OSD menu Color > Color Temperature > And select 'Warm' or any other preferred color preset.

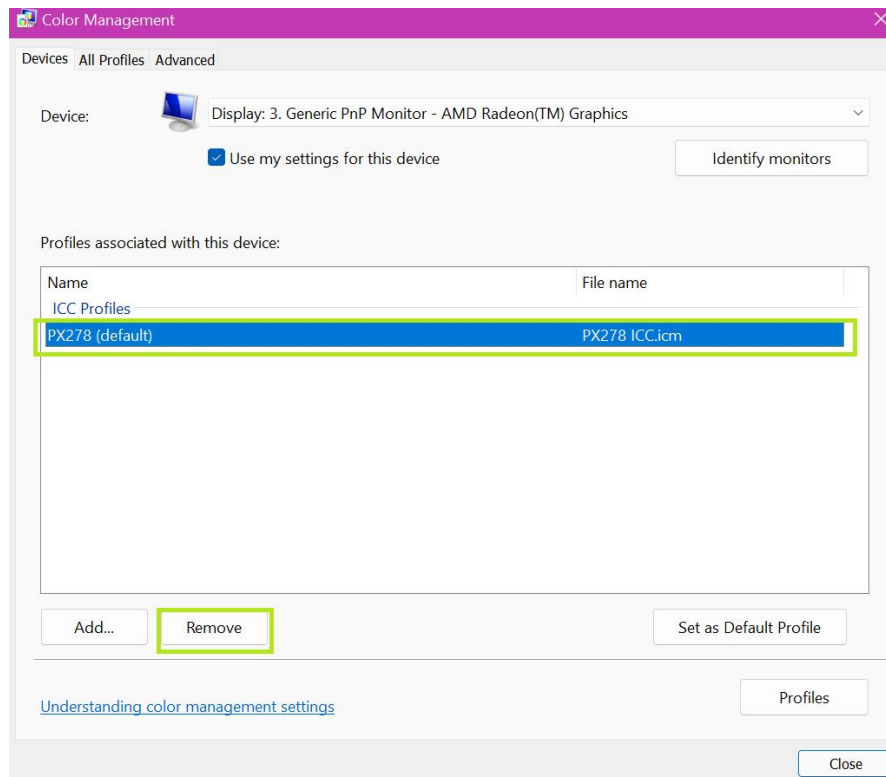


Please note, if you are utilizing multiple Pixio® monitors, it is necessary to individually assign a color profile to each one. However, it is possible to apply a singular ICC file across multiple monitors.

How to Uninstall the Color Profile on Windows 7/10/11

To uninstall and return to the 'Color Management' do the following:

1. Make sure the correct device/monitor is selected.
2. Select the ICC Profile from the 'profile list and click 'Remove'.



Install Custom ICC on MacOS

1. In order to open the downloaded ICC file, click the MacOS ColorSync Utility by pressing Command and Space at the same time and typing “colorsync” into the search box and pressing Enter.
(Alternatively, you can manually navigate to ColorSync by opening Finder and following the navigation path “Finder > Applications > Utilities > ColorSync Utility.”)
2. In the ColorSync Utility menu, navigate to “Displays.” Click the arrow to show the possible options.
3. Select your Pixio® monitor from the list under the displays.
4. Click the arrow next to “Current Profile” and select “Other.”
5. Browse to the color profile downloaded. This file will be in your default locations for downloaded files unless you selected another location.
6. Double-click the custom Color profile.
7. The color profile should result in an immediate color change.
Please be aware that if the default and custom color profiles bear resemblance, the alteration in color might not be readily perceptible.

To double-check your custom color profile, you may open the ColorSync Utility (similar to what was done in Step 1), select the “Display” option (as indicated in Step 2), and then choose your Pixio® Monitor (as directed in Step 3). You can then confirm that your custom color profile is indicated under the “Current Profile” section.

Reminder: If you have multiple Pixio® monitors, you will need to select a color profile for each monitor individually. (You can load a single ICC file for multiple monitors.)

Reset the Color Profile on MacOS

If you want to revert the changes, you can use these steps to reset your monitor settings to the default color profile:

1. Navigate to System Preferences.
2. Select “Displays.”
3. Select “Colors.” You will see a list of profiles. The one highlighted is the current color profile.
4. Click on the default profile so that it is highlighted.
Note: The generic profile is usually just the name of the device you have (i.e., iMac for an iMac).