

Roulé Collection

by Pauline Deltour

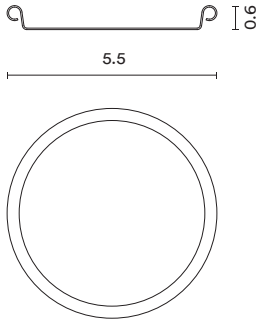
Inspired by old pots used for making marmalade, French designer Pauline Deltour created Roulé, a collection of bowls, trays and coasters in copper and brass. Her otherwise minimal designs are lent a simple elegance by the distinctive “rolled” edge from which the collection takes its name. This set of two Roulé coasters is stackable, while the edge makes them easy to grip. Their generous dimensions mean they’ll comfortably hold champagne bottles as well as teacups and glasses.



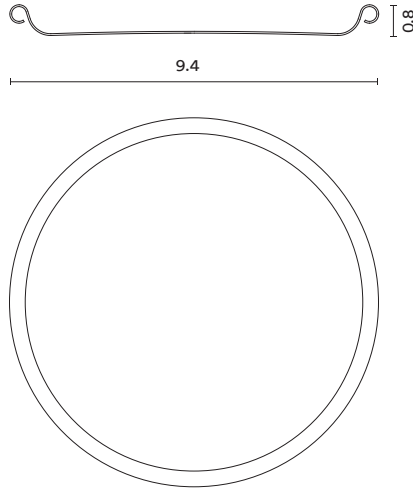
hem

Technical Specifications

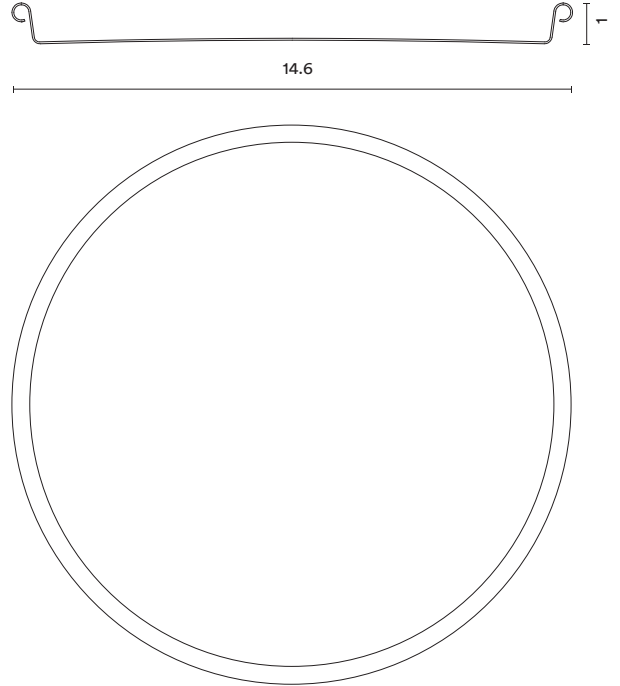
Roulé Coaster
Diameter: 5.5; Height: 0.6 in



Roulé Tray Small
Diameter: 9.4; Height: 0.8 in

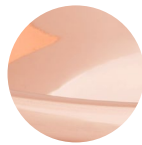


Roulé Tray Large
Diameter: 14.6; Height: 1 in

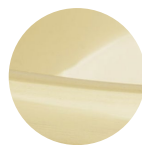


Materials and Colors

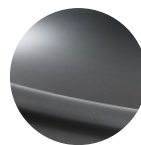
Made in Italy



Solid Brass



Solid Copper



Solid polished,
burned Copper