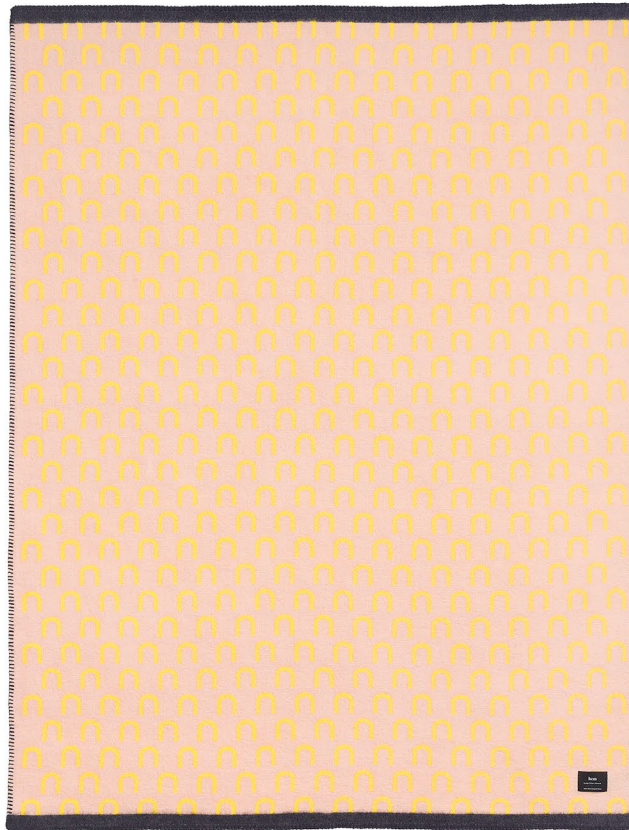


Arch Throw

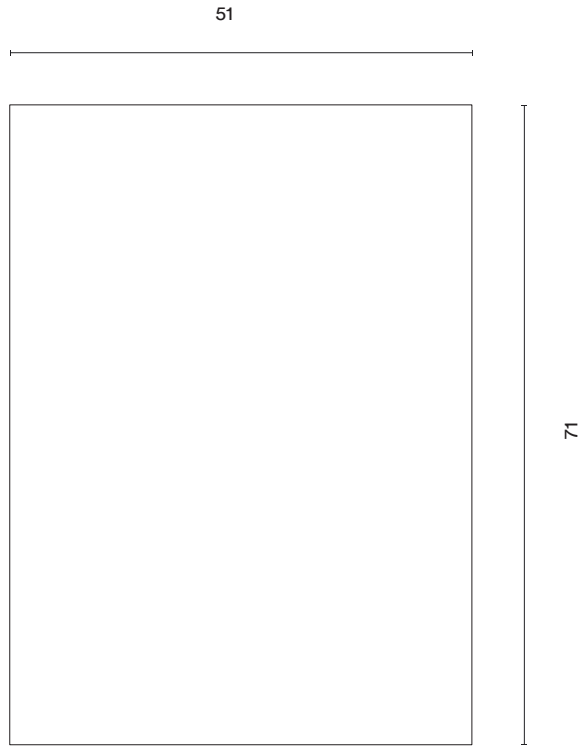
by Arthur Arbesser

No one dreams up a statement piece like Milan-based fashion designer Arthur Arbesser. Driven by contemporary architecture, the Stripe throws are a vibrant take on a classic pattern. Luxuriously cosy, it is made of superfine 100% New Zealand lambswool.



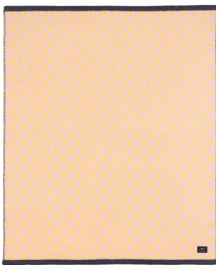
hem

Technical Specifications



Materials and Colors

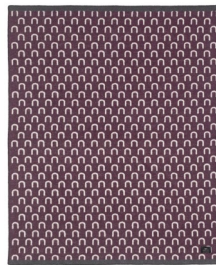
100% New Zealand Lambswool (Superfine 450g/sqm)
Produced in Lithuania



Yellow / Pink
Dark Blue Border



Black / White
Orange Border



Aubergine / Light grey
Anthracite Border



White / Nude
Green Border