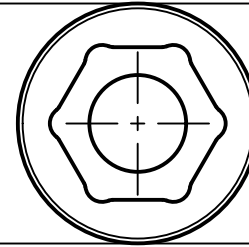
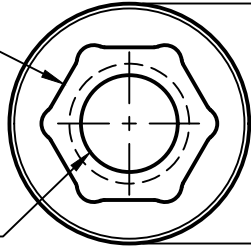


5/16" (8mm) HEX

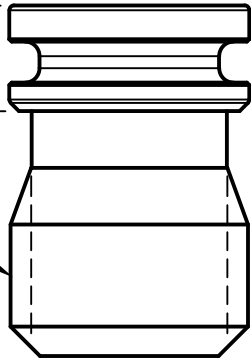
1/4-20 UNC ∇ 0.62 TYP



$\varnothing 0.5000^{+0.0002}_{-0.0000}$

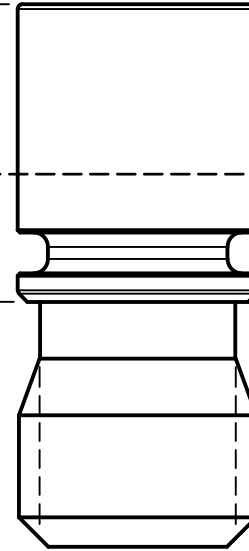
0.22

1/2-13 UNC TYP



0.62

0.37
(APPROX.
PLATE STICKOUT)



ALL DIMENSIONS IN INCHES (UNLESS OTHERWISE SPECIFIED).



PROJECT

SMW Fixturing Pins

TITLE

Thread Adapter Pins
Locating & Non-Locating Pins
1/2-13 to 1/4-20 Adapters

APPROVED

CHECKED

DRAWN

Alex Pinson

12/4/2023

SIZE

A

CODE

DWG NO

S1845 / S1846

REV

1

SCALE 5:2

WEIGHT

SHEET 1/1