

Project Name: _____ AIA#: _____

Model #: _____ Location: _____

SIS#: _____ Item #: _____ Quantity: _____



5 Quart Countertop Mixer

*Built into each mixer is the quality
of workmanship and design
synonymous with Globe.*

Model

SP5 - 5 Quart Power Mixer
Color-White with gray top



GLOBE FOOD EQUIPMENT COMPANY

5 Quart Countertop Mixer

Standard Features

- Heavy-duty motor, 800 watts
- Gear-driven, high torque transmission and motor
- Ten speeds
- Electronic speed and load control
- Durable, NSF approved, white powder coating
- Rigid cast aluminum body
- Polycarbonate splash cover with ingredient chute
- All stainless steel attachments
- Dual bowl clamps to lock bowl down
- Permanently lubricated transmission
- Thermal overload protection
- Attachment hub
- Easy action bowl lift
- #10 Attachment hub
- Six foot cord with plug

Standard Accessories:

- 5 quart polished stainless steel bowl
- Stainless steel flat beater
- Stainless steel wire whip
- Stainless steel spiral dough hook
- Polycarbonate splash cover

Optional:

- Mixer table with undershelf
- Extended Warranty

(More options on back)

Warranty

- Two-year parts and one-year labor

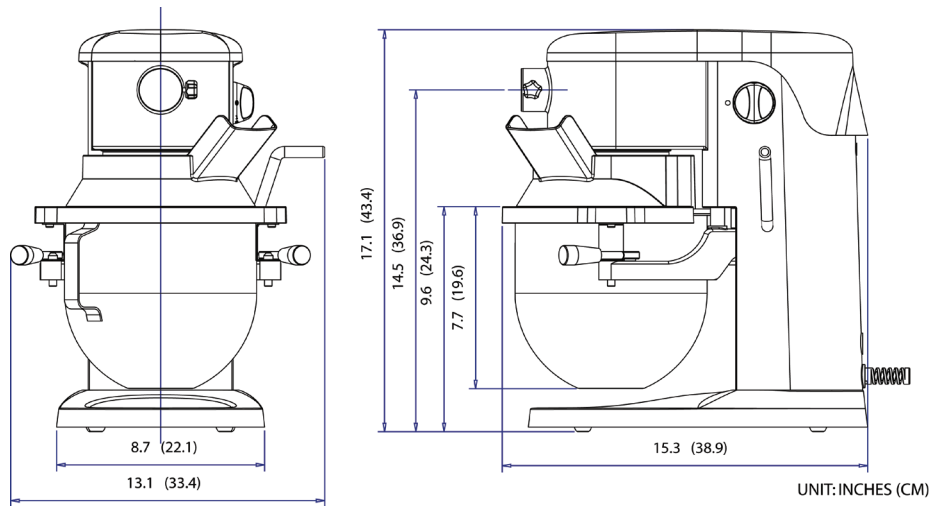
Approved by: _____ Date: _____



5 Quart Countertop Mixer

SP5

SP5



Drawings available through KCL. www.kclcad.com

Model	Elevation	Right	Plan	Back	BIM 3D	Revit
SP5						

SPECIFICATIONS

Model	Motor	Volts	Amps	Transmission Type	Capacity	Agitator Speeds (RPMs)										Attachment Speeds (RPMs)	
						0	1	2	3	4	5	6	7	8	9		10
SP5	800 W	115/60/1	4	Gear	5 qt / 5 L	OFF	30	50	70	90	105	120	145	165	180	200	50 to 450

Cord & Plug: Attached 6 foot flexible 3-wire cord with molded plug fits a grounded receptacle. NEMA 5-15P

FEATURES:

Transmission: Heavy duty transmission with precision milled gears operate the planetary action and provide high torque mixing power. Gears are packed in a long lasting grease, and all shafts are mounted in ball bearings.

Electronic Speed and Load Control:

Guarantees consistent kneading and mixing performance.

Manual Reset:

Electrically controlled thermal overload protection.

STANDARD ACCESSORIES:

- 5 Quart #304 series stainless steel bowl
- Stainless steel dough hook, beater, and wire whip
- Polycarbonate splash cover with built-in ingredient chute
- Spatula

OPTIONAL ACCESSORY:

- XXTABLE - Mixer Table with undershelf (Stainless steel top with galvanized steel undershelf and legs.) 30" W x 24" D x 24" H (76.2cm x 61cm x 61cm)

EXTENDED WARRANTY

- **SP-XD58** Extended warranty for the SP5 mixer. Coverage extends factory warranty to 2-years. Only available at time of purchase. (U.S.A. Only)

DIMENSIONS & SHIPPING INFORMATION

Freight Class **85**

Cartons are reinforced for shipping. The weight and dimensions of this reinforced carton are included below and may vary from shipment to shipment. **This product ships on a pallet.**

Model	Foot Print	Overall Dimensions	Net Weight	Shipping Dimensions	Shipping Weight
SP5	13.1" D x 15.3" W (33.4 cm x 38.9 cm)	15.3" L x 13.1" W x 17.1" H (38.9 cm x 33.4 cm x 43.3 cm)	33 lbs. (15 kg)	18.5" L x 15" W x 21.5" H (46 cm x 37 cm x 52 cm)	40 lbs. (18 kg)