

SERVING THE FOOD INDUSTRY SINCE 1951

## MIXER ACCESSORIES AND ATTACHMENTS

### GRINDER HEAD ATTACHMENT FOR MIXERS

With available units compatible for #12 and #22 drive hubs. Complete with a cast iron worm, ring, and cylinder, this grinder head ensures durability and efficiency, while its stainless steel feed pan, 1/4" plate and meat stomper allows for easy cleaning. With available units compatible with any number 12 take-off hub, this grinder attachment can be used to make the most out of your mixer. Also available in stainless steel.



Mixer sold separately

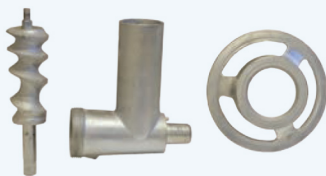


ITEM	DESCRIPTION	PACKAGING WEIGHT
*10051	#12 Grinder Head Complete Unit - Fit # 12 drive hubs	20 lbs./ 9 kgs.
27142	#12 Grinder Head Complete Unit - Stainless Steel - Fit # 12 drive hubs	22 lbs./ 10 kgs.
10058	#22 Grinder Head Complete Unit - Fit # 22 drive hubs	26 lbs./ 11.8 kgs.
21229	#22 Grinder Head Complete Unit - Stainless Steel - Fit # 22 drive hubs	28 lbs./ 12.7 kgs.



#### #12 Grinder Head Complete Unit (Item: 10051)

- Cast iron worm
- Ring
- Cylinder
- Feed pan
- #12 Machine plate
- #12 Machine knife
- Meat stomper



Item 10054  
**Grinder Head Package - Cylinder (10052), Ring (10053), Worm (10055)**  
 Gross Weight: 12 lbs.



Item 10056  
**Grinder Head Stomper**  
 Gross Weight: 1 lbs.

Item 10057  
**Grinder Head - 10" x 12" Feed Pan**  
 Gross Weight: 3 lbs.



Item 10052  
**Grinder Head Cylinder**  
 Gross Weight: 6 lbs.



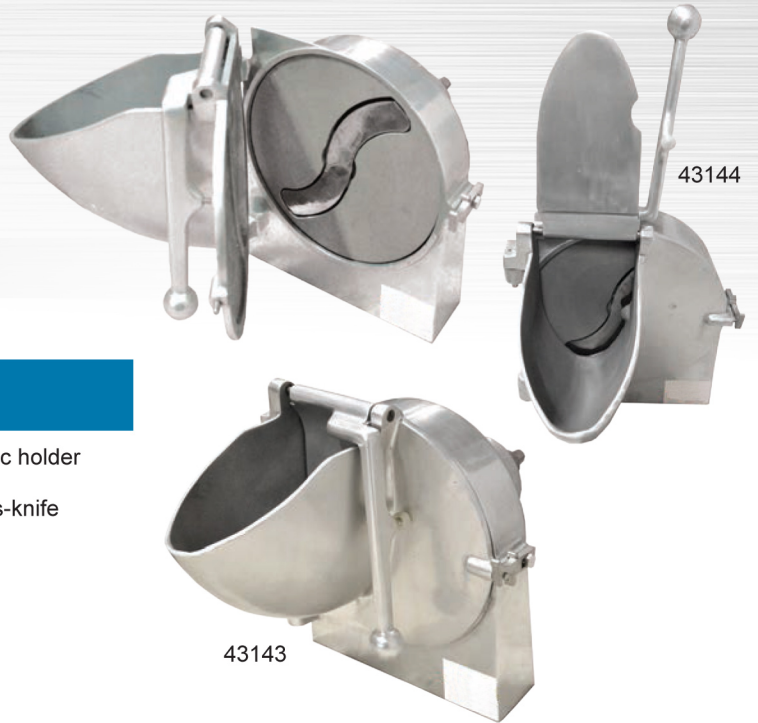
Item 10053  
**Grinder Head Ring**  
 Gross Weight: 4 lbs.



Item 10055  
**Grinder Head Worm**  
 Gross Weight: 2 lbs.

**VEGETABLE SLICER  
ATTACHMENT FOR MIXERS**

Compatible for #12 drive hub. Complete sets include slicer door, housing, pusher with disc holder frame or S-knife.



ITEM	DESCRIPTION
43143	Vegetable slicer attachment complete set with disc holder
43144	Vegetable slicer attachment complete set with s-knife
43145	Door for Slicer/Shredder Attachment
43146	Disc Holder Frame
43147	Housing for Slicer/Shredder Attachment
43148	Pusher for Slicer/Shredder Attachment
43150	Adjustable Slicer Plate with s-knife



## STAINLESS STEEL GRATER AND SHREDDER DISCS

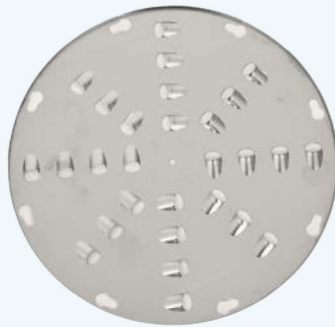
Our stainless steel grater and shredder discs are constructed for heavy-duty use. Ensure a reliable performance and durability. Disc holder frame required.



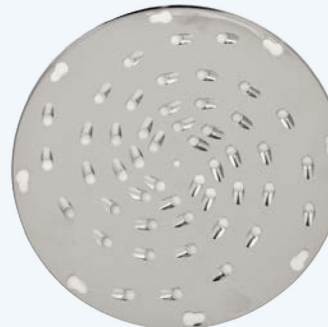
*Item 10132*  
**Stainless Steel  
Grater Disc**  
Gross Weight: 1 lbs.



*Item 43235*  
**Stainless Steel  
Shredder Disc With  
3/16\"**  
Gross Weight: 1 lbs.



*Item 10133*  
**Stainless Steel  
Shredder Disc With  
1/2\"**  
Gross Weight: 1 lbs.



*Item 43237*  
**Stainless Steel  
Shredder Disc With  
5/16\"**  
Gross Weight: 1 lbs.



*Item 10134*  
**Stainless Steel  
Shredder Disc With  
1/4\"**  
Gross Weight: 1 lbs.



*Item 10136*  
**Stainless Steel  
Shredder Disc With  
3/32\"**  
Gross Weight: 1 lbs.

## REPLACEMENT ACCESSORIES FOR GENERAL PURPOSE MIXERS

Flat beater, wire whip, dough hook and hopper available for Nella's 10-qt / 20-qt / 30-qt / 60-qt general purpose mixers.

### Replacement Accessories For 10-Qt Mixer 20467 / 13181



20467

Mixer sold separately

ITEM	DESCRIPTION
25061	Wire whip for 20467 / 13181
25062	Dough hook for 20467 / 13181
25066	Flat beater for 20467 / 13181
25090	Bowl for 20467 / 13181

### Replacement Accessories For 20-Qt Mixer 20441 / 17835



20441

Mixer sold separately

ITEM	DESCRIPTION
25153	Wire whip for 20441 / 17835
25154	Dough hook for 20441 / 17835
25155	Flat beater for 20441 / 17835
25157	Bowl for 20441 / 17835

### Replacement Accessories For 20-Qt Mixer 39390



39390

Mixer sold separately

ITEM	DESCRIPTION
25723	Hook for 39390
25724	Flat beater for 39390
25725	Wire whip for 39390
25727	Bowl for 39390

### Replacement Accessories For 30-Qt Mixer 20442 / 17836



20442

Mixer sold separately

ITEM	DESCRIPTION
24953	Wire whip for 20442 / 17836
24951	Dough hook for 20442 / 17836
24952	Flat beater for 20442 / 17836
24955	Bowl for 20442 / 17836



### Hopper for 10 / 20 / 30-QT Mixer

ITEM	DESCRIPTION
28718	Hopper for Mixer - Stainless Steel

### Replacement Accessories For 60-Qt Mixer 19999



19999

Mixer sold separately

ITEM	DESCRIPTION
24663	Wire whip for 19999
24667	Dough arm - hook for 19999
24669	Flat beater for 19999

Product not actually as shown

## HOBART COMPATIBLE UNIVERSAL ATTACHMENTS & MIXER BOWLS

A reliable mixer attachment is not only help to improve your work performance, but also enhance productivity and efficiency in your kitchen. Our universal attachments and stainless steel mixer bowls are available in various sizes to meet your needs.

### Hobart Compatible Universal Attachments



Whip



Flat Beater



Dough Hook

(Picture is based on 20 Qt Accessories. Product may not be exactly as shown.)

ITEM	DESCRIPTION	GROSS WEIGHT
10097	20 QT Flat Beater Attachment	3 lbs./ 1.4 kgs.
10098	30 QT Flat Beater Attachment	5 lbs./ 2.3 kgs.
17606	60 QT Flat Beater Attachment	7 lbs./ 3.2 kgs.
17609	80 QT Flat Beater Attachment	10 lbs./ 4.5 kgs.
17612	140 QT Flat Beater Attachment	25 lbs./ 11 kgs.
10078	20 QT Dough Hook Attachment	4 lbs./ 2 kgs.
10079	30 QT Dough Hook Attachment	6 lbs./ 2.7 kgs.
17607	60 QT Dough Hook Attachment	10 lbs./ 4.5 kgs.
17610	80 QT Dough Hook Attachment	17 lbs./ 7.7 kgs.
17613	140 QT Dough Hook Attachment	25 lbs./ 11 kgs.
10237	20 QT Whip Attachment	4 lbs./ 2 kgs.
10238	30 QT Whip Attachment	6 lbs./ 2.7 kgs.
17605	60 QT Whip Attachment	8 lbs./ 3.6 kgs.
17608	80 QT Whip Attachment	10 lbs./ 4.5 kgs.
17611	160 QT Whip Attachment	19 lbs./ 8.6 kgs.

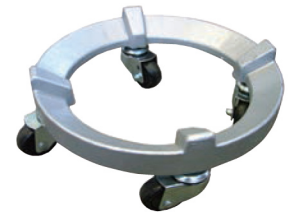
### Stainless Steel Mixer Bowls



ITEM	DESCRIPTION	GROSS WEIGHT	DIMENSIONS (Dia x H)
14246	20 QT Stainless Steel Mixer Bowl	12 lbs./ 5.4 kgs.	14" x 11"/ 356 x 279 mm
23509	20 QT Stainless Steel Mixer Bowl Light Gauge	12 lbs./ 5.4 kgs.	14" x 11"/ 356 x 279 mm
14247	30 QT Stainless Steel Mixer Bowl	18 lbs./ 8 kgs.	15.5" x 13.25"/ 394 x 336.6 mm
14248	60 QT Stainless Steel Mixer Bowl	28 lbs./ 12.7 kgs.	19.25" x 16.75"/ 489 x 425.5 mm
14249	80 QT Stainless Steel Mixer Bowl	34 lbs./ 15.4 kgs.	21.5" x 18.5"/ 546 x 470 mm
18266	140 QT Stainless Steel Mixer Bowl	72 lbs./ 32.6 kgs.	25" x 26"/ 635 x 660 mm

### Bowl Dolly

Steel-painted bowl dolly provides easy mobility for you perfectly mixed ingredients.



ITEM	DESCRIPTION	GROSS WEIGHT	DIMENSIONS (Dia x H)
23512	Bowl Dolly, steel-painted, fits 30 -140 QT bowls	30 lbs./ 13.6 kgs.	16.5" x 7.25"/ 419 x 184 mm

Hobart compatible universal attachments and mixer bowls are not suitable for Omcan 20441/ 17835/ 20442/ 17836/ 19999/ 20467/ 13181/ 39390 mixers