

SERVING THE FOOD INDUSTRY SINCE 1951

26 CU. FT. TWO-SWING DOOR REFRIGERATION

Model: G326 Item 41219

Its attractive design and large exhibition space makes it ideal to display a great variety of products



Establishing a NEW STANDARD in the commercial refrigeration industry.

KEY FEATURES

- **BMAD refrigeration system**, allow to cool down the interior and maintain the temperature range with a minimum energy consumption.
- **30 gauge exterior pre-painted steel**, brings years of duration.
- **Electronic temperature controller**, assures an optimal performance of the cooler, making the product temperature ideal for its consumption.
- **High efficiency glass door**, with a double panel and a low-e film reduces the condensation. Self closing system allow the door to get back to its original position, taking care not to damage it.
- **LED lighting system**, uses a portion of the energy of regular fluorescent lights, and need no replacement for seven years.
- **CFC and HFC free Cyclopentane foam**, is eco-friendly and a high efficiency insulator.
- **Electronic fan motors**, allow a better performance, using only a portion of the energy required by a shaded pole motor.
- **Low maintenance condenser**, prevents dust from blocking air flow and thus saving energy and increasing compressor's life.



COMMERCIAL REFRIGERATOR
AND/OR FREEZER
9242



NSF/ANSI 7 COMMERCIAL REFRIGERATOR
AND/OR FREEZER
20YY



Authorized Dealer

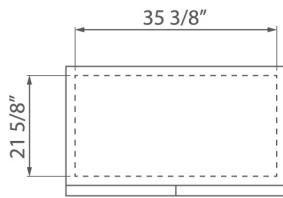
ELITE SERIES REFRIGERATION

26 CU. FT. TWO-SWING DOOR REFRIGERATION

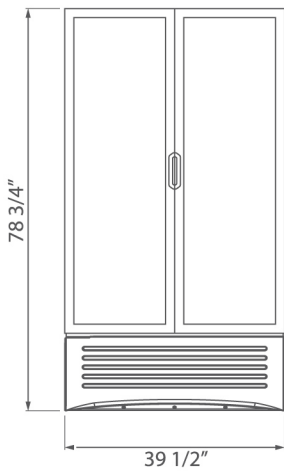


NELLA

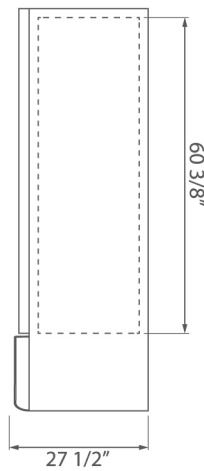
PRODUCT DIMENSION



TOP VIEW



FRONT VIEW



SIDE VIEW

TECHNICAL SPECIFICATIONS

| | |
|---------------------------|---|
| ITEM NUMBER | 41219 |
| MODEL | G326 |
| DESCRIPTION | 26 cu.ft. Two-Swing Door Refrigeration |
| VOLUME | 26.7 ft ³ / 756.0 liters |
| DOORS | 2 |
| SHELVES | 10 |
| SHELF SIZE | 15 7/8" x 19 1/2" / 404mm x 494mm |
| CAPACITY | 20 oz. - Total: 300 Front: 5 12 oz. - Total: 840 |
| TEMPERATURE RANGE | 0°C - 7°C / 32°F - 44.6°F |
| ENERGY CONSUMPTION | 6.174 kWh/day* |
| ELECTRICAL | 115 V / 60 Hz / 1 Ph |
| CORD LENGTH | 118" / 3000 mm |
| HORSEPOWER | 1/3 |
| AMPS | 7.6 |
| WEIGHT | Gross: 324.1 lbs. / 147 kg. Crated: 330.7 lbs. / 150 kg. |
| INTERNAL DIMENSIONS (WDH) | 35 3/8" x 21 5/8" x 60 3/8" / 898 x 548 x 1535mm |
| DIMENSIONS (WDH) | 39 1/2" x 27 1/2" x 78 3/4" / 1000 x 700 x 2000mm |

* Energy consumption based on ANSI/ASHRAE Standard 72-2005.



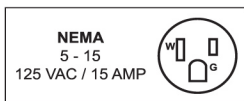
LIMITED WARRANTY
3 YEAR PARTS AND LABOR
5 YEARS PARTS ONLY ON COMPRESSOR



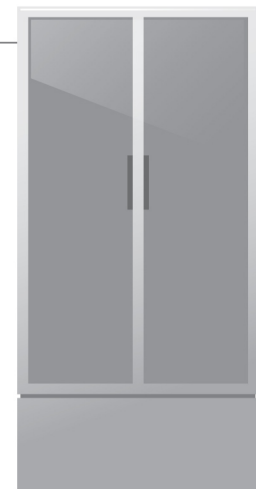
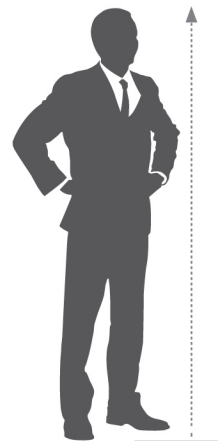
COMMERCIAL REFRIGERATOR
AND/OR FREEZER
9242



NSF/ANSI 7 COMMERCIAL REFRIGERATOR
AND/OR FREEZER
20YY



5'9" / 1790mm



G3 26

BMAD System (Low maintenance high performance). Dimensions rounded up to the nearest inch or millimeter. Specifications subject to change without notice.

NELLA

Telephone: 416-740-2424
Email: help@nellaonline.com
Website: www.nellaonline.com