



# COOKING EQUIPMENT

SERVING THE FOOD INDUSTRY SINCE 1951

## PYRALIS SERIES PIZZA OVEN- SINGLE AND DOUBLE CHAMBERS WITH MECHANICAL CONTROL

Item #: 40637/ 40638/ 40641

Model#: PE-IT-0024-S/ PE-IT-0048-D/ PE-IT-0049-D

**WITH  
ACTIVESTONE  
TECHNOLOGY**

Pyralis ovens have a steel front, pre-painted white grey body, steel door with glass, a knob for opening and closing the steam exhauster and non-thermal handles.



Authorized Dealer



**WARRANTY**  
PARTS AND LABOR



# COOKING EQUIPMENT

PYRALIS SERIES PIZZA OVEN- SINGLE CHAMBER AND MECHANICAL DISPLAY FEATURING ACTIVE STONE

# NELLA

## Features:

The Pyralis is an electric oven that was designed and built to offer extremely high levels of performance, efficiency and reliability with low operating costs. In the mechanical version, the temperature is set by the top and bottom thermostats and is displayed on the mechanical thermometer. The Mechanical Pyralis has a safety thermostat and independent chambers. The door is balanced thanks to a spring with an adjustable tie-rod. The baking chambers are in stainless steel and illuminated by light kits with heat resistant lamps.

\* Special Order are available for the following upon request: stainless stands, casters, hoods, vents and suction motor.

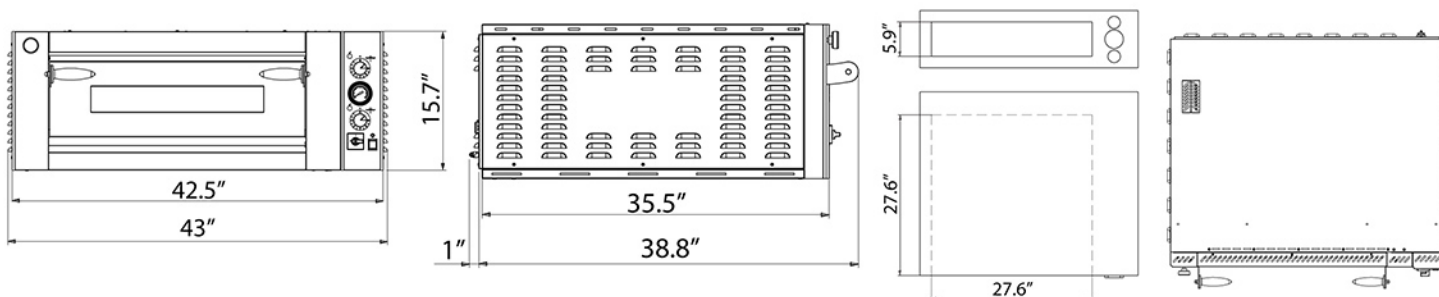


### Related Accessories - sold separately

ITEM NUMBER	DESCRIPTION
41604	Stainless steel stand
41603	Stainless steel hood
40645	Wheels for all pizza oven stands

### 6.6 kW Pyralis Series Oven with Single Chamber and Mechanical Display featuring Active Stone

ITEM NUMBER	40637
MODEL	PE-IT-0024-S
MAXIMUM TEMPERATURE	842° F / 450° C
ELECTRICAL POWER	220V / 60 /3
CHAMBER DIMENSIONS (LxDxH)	27.6" x 27.6" x 5.9" / 700 x 700 x 150 mm
EXTERNAL DIMENSIONS (LxDxH)	43" x 39.8" x 15.7" / 1090 x 1010 x 399 mm
PACKAGING DIMENSIONS (LxDxH)	44" x 43" x 21" / 1120 x 1100 x 540 mm
WEIGHT	Net Weight: 115 kg / 253 lbs. Gross Weight: 132 kg / 291 lbs.



max 4 x 12"	max 4 x 13"	max 1 x 18"	max 1 x (24" x 16")

# NELLA

Telephone: 416-740-2424  
Email: [help@nellaonline.com](mailto:help@nellaonline.com)  
Website: [www.nellaonline.com](http://www.nellaonline.com)



# COOKING EQUIPMENT

PYRALIS SERIES PIZZA OVEN- DOUBLE CHAMBER AND MECHANICAL DISPLAY FEATURING ACTIVE STONE



## Related Accessories - sold separately

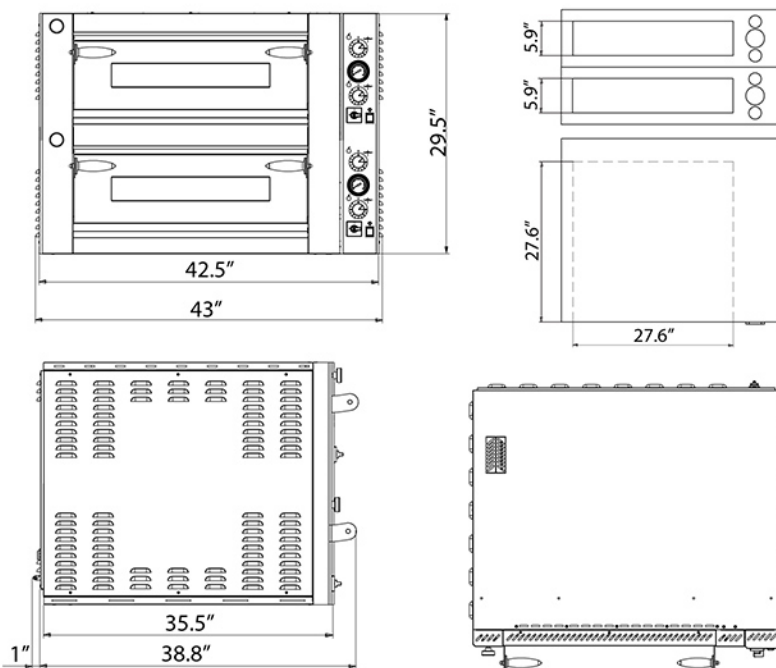
ITEM NUMBER	DESCRIPTION
41605	Stainless steel stand
41603	Stainless steel hood
40645	Wheels for all pizza oven stands

## 13.2 kW Pyralis Series Oven with Double Chamber and Mechanical Display featuring Active Stone

ITEM NUMBER	40638
MODEL	PE-IT-0048-D
MAXIMUM TEMPERATURE	842° F / 450° C
ELECTRICAL	220V / 60 /3
POWER	13.2 kW
CHAMBER DIMENSIONS (LxDxH)	27.6" x 27.6" x 5.9" (x2) / 700 x 700 x 150 mm (x2)
EXTERNAL DIMENSIONS (LxDxH)	43" x 39.8" x 29.5" / 1090 x 1010 x 749 mm
PACKAGING DIMENSIONS (LxDxH)	44" x 43" x 33" / 1120 x 1100 x 840 mm
WEIGHT	Net Weight: 183 kg / 403.4 lbs. Gross Weight: 201 kg / 443 lbs.



Mechanical display



max 4 x 12"	max 4 x 13"	max 1 x 18"	max 1 x (24" x 16")



Telephone: 416-740-2424  
Email: [help@nellaonline.com](mailto:help@nellaonline.com)  
Website: [www.nellaonline.com](http://www.nellaonline.com)

# COOKING EQUIPMENT

PYRALIS SERIES PIZZA OVEN- DOUBLE CHAMBER AND MECHANICAL DISPLAY FEATURING ACTIVE STONE



# NELLA

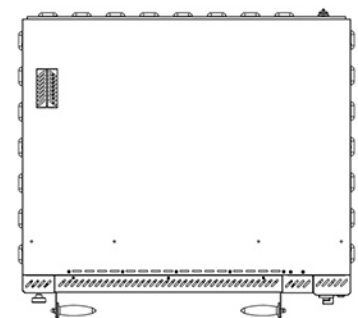
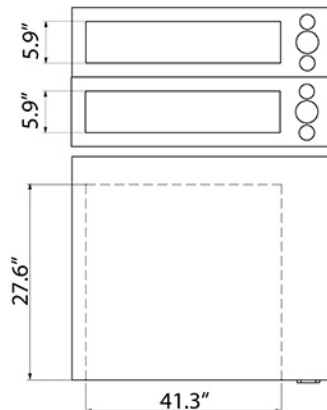
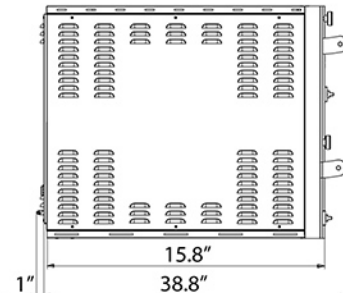
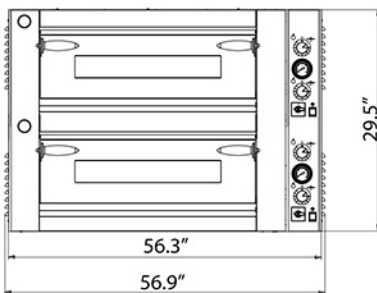


## Related Accessories - sold separately

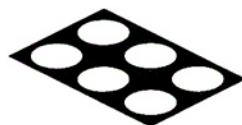
ITEM NUMBER	DESCRIPTION
40642	Stainless steel stand
40644	Stainless steel hood
40645	Wheels for all pizza oven stands

## 18 kW Pyralis Series Oven with Double Chamber and Mechanical Display featuring Active Stone

ITEM NUMBER	40641
MODEL	PE-IT-0049-D
MAXIMUM TEMPERATURE	842° F / 450° C
ELECTRICAL POWER	220V / 60 / 3
CHAMBER DIMENSIONS (LxDxH)	41.3" x 27.6 x 5.9" (x2) 1050 x 700 x 150 mm (x2)
EXTERNAL DIMENSIONS (LxDxH)	56.9" x 39.8" x 29.5" / 1440 x 1010 x 750 mm
PACKAGING DIMENSIONS (LxDxH)	44.1" x 57.9" x 33.1" / 1120 x 1470 x 840 mm
WEIGHT	Net Weight: 231 kg / 509 lbs. Gross Weight: 254 kg / 560 lbs.



max 6 x 12"



max 6 x 13"



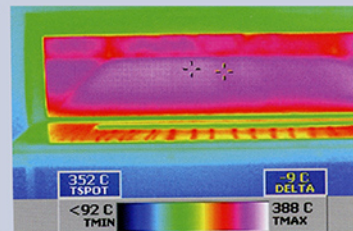
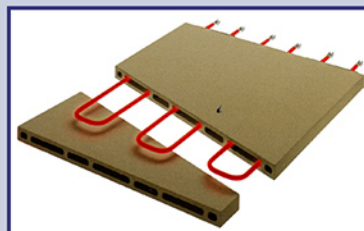
max 2 x 18"



max 2 x (24" x 16")

## The Activestone

Therographic test show that in a chamber heated by Activestone, the desired temperature can be reached within a shorter time span and heat is distributed evenly.



ACTIVESTONE



# NELLA

Telephone: 416-740-2424  
Email: [help@nellaonline.com](mailto:help@nellaonline.com)  
Website: [www.nellaonline.com](http://www.nellaonline.com)