



# N8100-BR

Drop-In Curved Self-Contained Mechanically Cooled Cold Pans

Project \_\_\_\_\_

Item \_\_\_\_\_

Quantity \_\_\_\_\_

CSI Section 11400

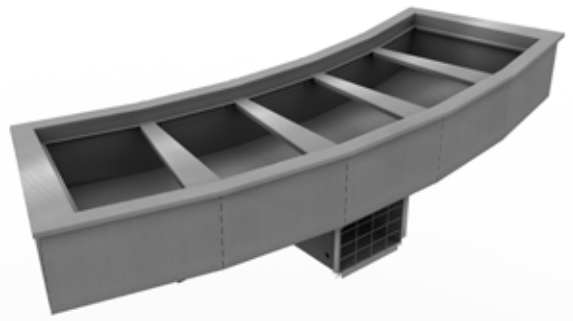
Approved \_\_\_\_\_

Date \_\_\_\_\_

N8100-BR: Drop-In Curved Self-Contained Mechanically Cooled Cold Pans

## Models

- N8144-BR Mechanically cooled cold well, fits two standard 12" x 20" pans
- N8159-BR Mechanically cooled cold well, fits three standard 12" x 20" pans
- N8176-BR Mechanically cooled cold well, fits four standard 12" x 20" pans
- N8194-BR Mechanically cooled cold well, fits five standard 12" x 20" pans



N8194-BR

## Standard Features

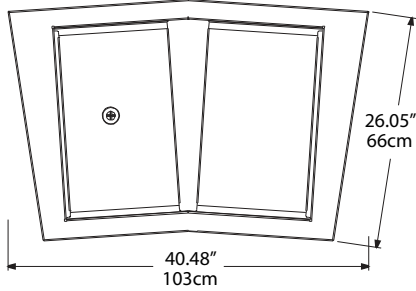
- NSF-7 certified performance
- Stainless steel holding clips secure pans
- Environmentally friendly, Kyoto Protocol Compliant, Non ODP (Ozone Depletion Potential), Non GWP (Global Warming Potential) polyurethane foam insulation
- Push-in perimeter gasket
- Stainless steel louver provided
- Environmentally friendly R404a refrigerant
- 1" drain standard
- Thermostat for temperature control
- One year parts and 90 day labor standard warranty

## Options & Accessories

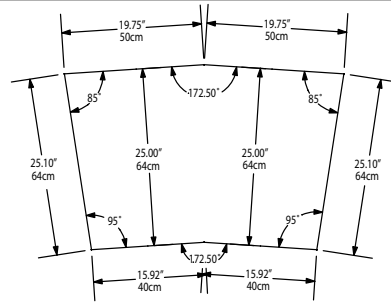
- Custom pan template
- Adapter bars
- Flexishield® food shields, single or dual service
- Relocate compressor
- Mullion fan assembly\*
- Remote refrigeration (specify refrigerant)\*
- 220V/50 cycle\*

\* Inclusion of this option will alter electrical specifications of unit

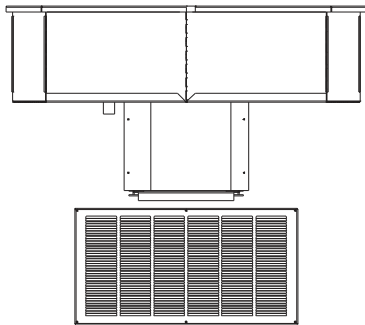
## N8144-BR



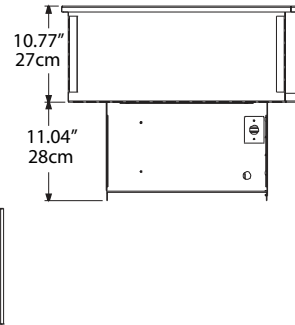
N8144-BR Plan View



N8144-BR Cutout Dimensions

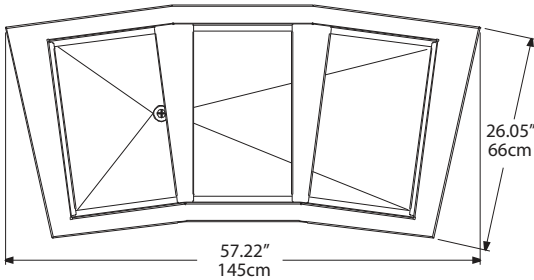


N8144-BR Elevation View

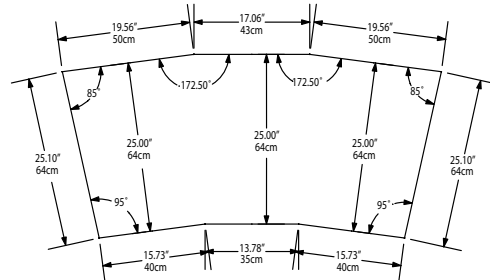


N8144-BR Side View

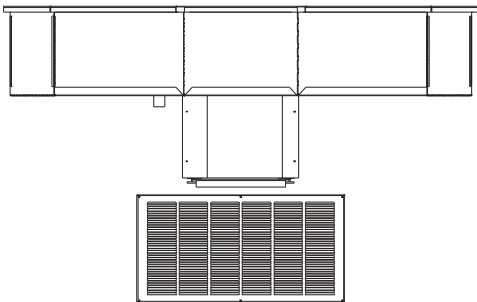
## N8159-BR



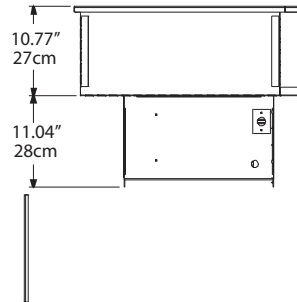
N8159-BR Plan View



N8159-BR Cutout Dimensions

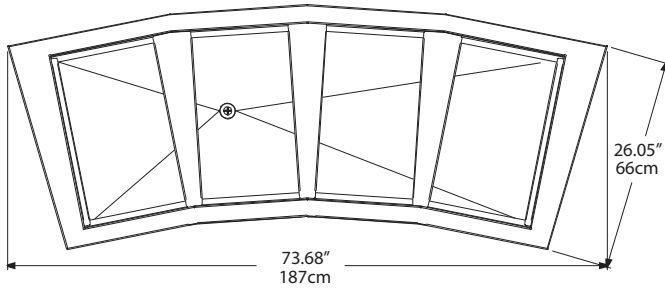


N8159-BR Elevation View

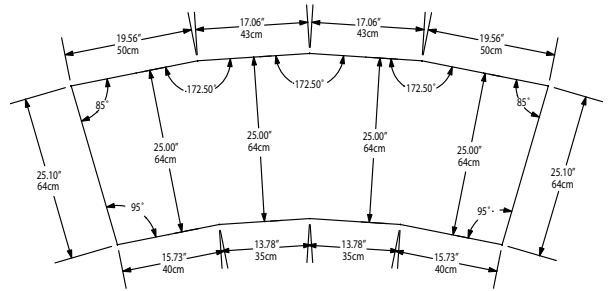


N8159-BR Side View

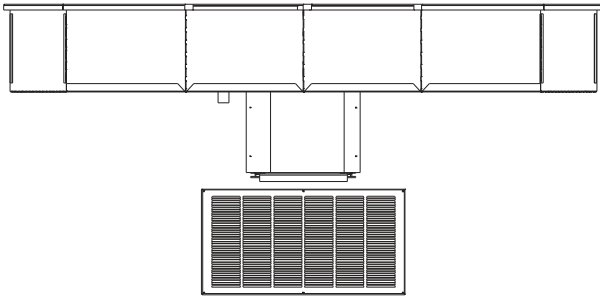
## N8176-BR



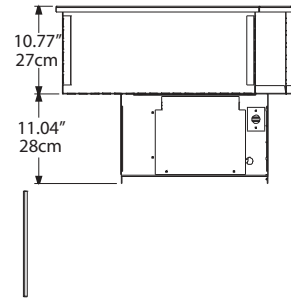
N8176-BR Plan View



N8176-BR Cutout Dimensions

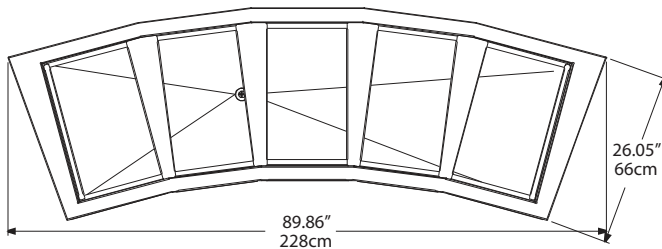


N8176-BR Elevation View

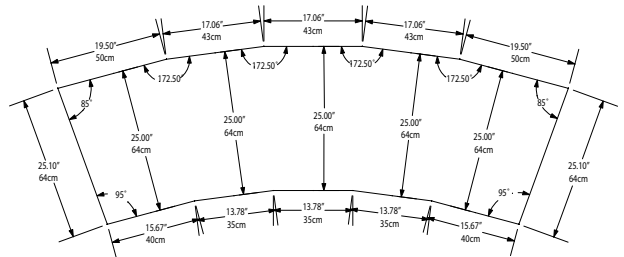


N8176-BR Side View

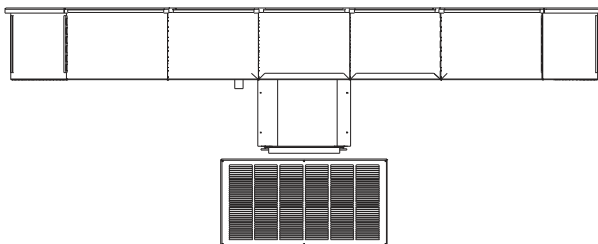
## N8194-BR



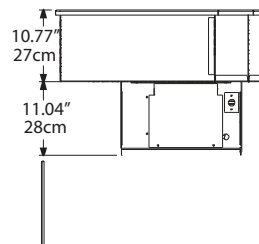
N8194-BR Plan View



N8194-BR Cutout Dimensions



N8194-BR Elevation View



N8194-BR Side View



# N8100-BR

## Drop-In Curved Self-Contained Mechanically Cooled Cold Pans

### Specifications

**Top** is one-piece 18-gauge stainless steel. Interior liner is 22-gauge stainless steel and is creased to a 1.00" (3cm) diameter drain. Stainless steel holding clips accommodate 12" x 20" (30cm x 51cm) pans 4" or 6" (10cm or 15cm) deep supplied by others. Product temperatures of 33°F (1°C) to 41°F (5°C) are maintained at 86°F (29°C) ambient room temperature, meeting NSF 7 requirements. Adapter bars are standard.

**Sides and bottom** are wrapped with refrigeration lines and insulated with high-density environmentally friendly, Kyoto Protocol Compliant, Non ODP (Ozone Depletion Potential), Non GWP (Global Warming Potential) closed-cell polyurethane. Exterior housing is 24-gauge galvanized steel.

**Condensing unit** is suspended below the cold pan on a 16-gauge steel frame and uses R404a refrigerant. Temperature control has an ON/OFF position to shut down cold pan. Unit has an 8' (2.4m) cord and NEMA 5-15P plug.

A stainless steel louver is provided for field installation; cutout dimension is 12" x 23.5" (30cm x 60cm). A second opening at the rear of the cabinet should be provided at installation to allow for proper air circulation.

### Specifications

Model	# Of 12" x 20" Pans Held	Volts/Hertz/Phase	H.P.	Amps	BTU Load	System Capacity	Shipping Weight
N8144-BR	2	115/60/1	1/5	3.7	379	812	161lbs/72kg
N8159-BR	3	115/60/1	1/4	5.6	569	889	184lbs/83kg
N8176-BR	4	115/60/1	1/4	5.6	758	1373	233lbs/105kg
N8194-BR	5	115/60/1	1/3	7.3	948	1469	243lbs/109kg

Delfield reserves the right to make changes to the design or specifications without prior notice.



980 S. Isabella Rd.  
Mt. Pleasant, Michigan 48858

Phone: 800-733-8948 or 989-773-7981  
Fax: 800-669-0619  
www.delfield.com

Printed in the U.S.A.  
DSN8100BR  
6067 3/16

