

Cam GoBox[®]

Catering | Curbside | Delivery

Stronger than foam

- ▶ AMAZINGLY LIGHT
- ▶ UNBELIEVABLY STRONG
- ▶ BUDGET-FRIENDLY

Professional Grade Insulated Carriers



HOLDS
Hot & Cold
Food For
4+ Hours



CAMBRO
TRUSTED FOR GENERATIONS™

Cam GoBox protects food quality and safety while lightening the load for employees. High-tech expanded polypropylene material (EPP) gives you the affordability, speed and durability you need to support new services and expanded operations.



What is EPP?

EPP is a closed-cell bead foam that provides thermal insulation, outstanding impact and chemical resistance, remarkably high strength-to-weight ratio and 100% recyclability.

Common Uses for EPP:

Automotive: Impact protection

Construction: Insulation

Shipping: Valuable goods protection

Sporting goods: Helmet lining

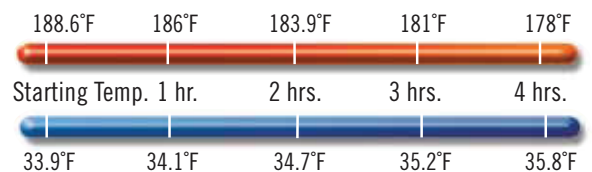
Superior insulation keeps **food safe** during holding and transport.

Cam GoBoxes ensure that food stays at safe temperatures below 41°F or above 135°F for over four hours during holding and transport.

- Use with Camchillers® or Camwarmers® to extend cold and hot holding time even further. See accessories page for details.
- Use with a Cambro Food Pan and Seal Cover for the ultimate food-safe holding, delivery and catering solution.



Hot Holding



Cold Holding



Top 5 Uses for Cam GoBoxes®

1. Delivering individual meals.
2. Carrying catered foods to events or to drop-off.
3. Holding hot or cold foods for take-out.
4. Gearing up for a large event.
5. Getting started in the catering or delivery business.



Why Customers Love Cam GoBox



Amazingly
Light



Unbelievably
Strong



Budget
Friendly



Cam GoBox® Professional Grade Insulated Carriers Top Loaders

EASY LOADING AND UNLOADING
Interior wall recesses make loading and unloading easy for both GN 1/1 as well as 1/2 pans. Straight interior walls allow room for stacking pans inside carrier.



A Cambro GN Food Pan and Seal Cover or liner are recommended to keep your Cam GoBox clean and sanitary.



COMING SOON

OPTIONAL INSERT KIT
For an additional cold boost, use with optional Camchiller Insert Kit. Built-in cut-outs support cold transfer while protecting food from condensation.

ERGONOMIC HANDLES
Comfortable handles allow easy and safe lifting of the EPP180LH GoBox.



STACKABILITY
Cam GoBoxes inter-stack.



Stronger than foam



Lightweight – Made of EPP (Expanded Polypropylene) – an eco-friendly high performance foam material.



Excellent Energy Absorption – can withstand substantial impact without damage.



Dishwasher safe.



100% Recyclable, CFC-Free.



No Open Flame.



1 year warranty against manufacturer's defects.

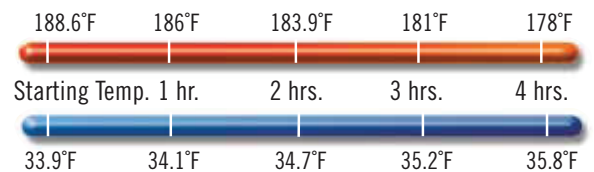


Safe for food contact.



Stackable

Hot Holding*



Cold Holding*

*Without the use of temperature maintenance tools.

Cam GoBox® Professional Grade Insulated Carriers Front Loaders

4-SIDED HANDLING

Thoughtfully designed built-in handles along the top of front loading models allow them to be easily carried from all four sides.



GENTLE OPEN AND CLOSE

Beveled door edges ensure door can be easily closed and latched.



DRIP-RESISTANT

Built-in condensation barrier helps front loaders to remain drip-resistant.



STACKABILITY

Cam GoBoxes inter-stack.

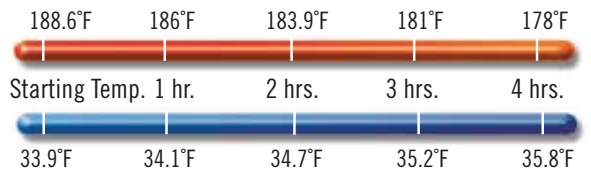
Cam GoBox front loading carriers are designed with enough room to hold GN 1/1 pans along with Camwarmers® or Camchillers®, if desired.

FULL 270° ACCESS

Durable hinges and latches allow the door to open 270° and remain open securely to the side of the front loader for easy access to products. Latches keep door securely closed during transport.



Hot Holding*



Cold Holding*

*Without the use of temperature maintenance tools.



Cam GoBox® Accessories

Camchillers®

Designed to extend the cold holding time of your food. Simply freeze flat overnight and place at the top of your carrier.



CODE	CP3253
DESCRIPTION	Camchiller GN 1/1
FITS	EPP160, EPP180, EPP180LH, EPP300, EPP400
DIMENSIONS	L 20.9" x W 12.8" x H 1.2"
UNIT WEIGHT	8.6 lbs.
COLOR	Glacier Blue (443)

Case Pack: 1



CODE	CP2632
DESCRIPTION	Camchiller GN 1/2
FITS	EPP260, EPP280
DIMENSIONS	L 12.8" x W 10.4" x H 1.2"
UNIT WEIGHT	3.9 lbs.
COLOR	Glacier Blue (443)

Case Pack: 1

ThermoBarrier®

Designed to keep hot or cold air concentrated within your front-loading carrier. As food pans are being removed, use the ThermoBarrier to close up any open space created.



CODE	EPP3253DIV
DESCRIPTION	ThermoBarrier fits EPP300 & EPP400
DIMENSIONS	L 20.9" x W 12.9" x H 1.5"
UNIT WEIGHT	0.8 lbs.
COLOR	Black (110)

Case Pack: 1

Camchiller Insert



Built-in-cut-outs support cold transfer while protecting food from condensation.



CODE	EPPCTS
DESCRIPTION	Camchiller Insert for Standard EPP180 & EPP160
EXTERIOR DIM.	L 23.6" x W 15.7" x H 3.4"
INTERIOR DIM.	L 21.1" x W 13.3" x H 1.3"
UNIT WEIGHT	0.8 lbs.
COLOR	Black (110)

Case Pack: 1



CODE	EPPCTL
DESCRIPTION	Camchiller Insert for EPP180LH
EXTERIOR DIM.	L 26.8" x W 15.7" x H 3.4"
INTERIOR DIM.	L 21.1" x W 13.3" x H 1.3"
UNIT WEIGHT	0.8 lbs.
COLOR	Black (110)

Case Pack: 1

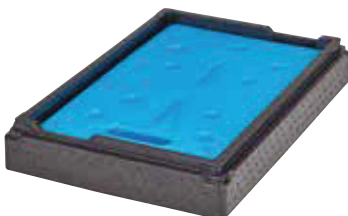
Plastic ID Labels



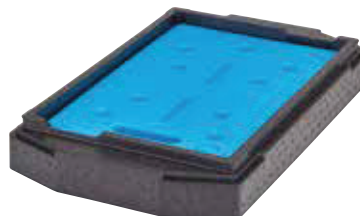
CODE	EPPID5
DESCRIPTION	Plastic ID labels fits all Cam GoBoxes
COLOR	(000)

Case Pack: 1

Camchiller Insert Kits



EPPCTSPKG
Standard top loader Camchiller and Insert all in one package, available for EPP180 and EPP160.



EPPCTLPKG
Large handle Camchiller and Insert all in one package, available for EPP180LH.

Camdolly®



CODE	CD3253EPP
DESCRIPTION	Camdolly fits all Cam GoBoxes 4 swivel casters (two with brake)
UNIT WEIGHT	9.9 lbs.
LOAD CAPACITY	551 lbs.
COLOR	Hot Red (158)

Optional Transporting Strap

CODE	400STP
DESCRIPTION	150" long strap
COLOR	Beige (000)

Case Pack: 1

Cam GoBox® Professional Grade Insulated Carriers



For Half-Size (GN 1/2) Food Pans



CODE	EPP260SW
CAPACITY	1 each 6" deep food pan*
EXTERIOR DIM.	L 15.4" x W 13" x H 10"
INTERIOR DIM.	L 13" x W 10.6" x H 7.6"
UNIT WEIGHT	1.37 lbs.
VOLUME	17.9 qt.
COLOR	Black (110)
Case Pack: 1	



CODE	EPP280SW
CAPACITY	1 each 8" deep food pan*
EXTERIOR DIM.	L 15.4" x W 13" x H 12.4"
INTERIOR DIM.	L 13" x W 10.6" x H 10"
UNIT WEIGHT	1.54 lbs.
VOLUME	23.6 qt.
COLOR	Black (110)
Case Pack: 1	

For Full-Size (GN 1/1) or Half-Size (GN 1/2) Food Pans



CODE	EPP160SW
CAPACITY	1 each 6" deep food pan*
EXTERIOR DIM.	L 23.6" x W 15.7" x H 10"
INTERIOR DIM.	L 21.2" x W 13.3" x H 7.7"
UNIT WEIGHT	2.4 lbs.
VOLUME	37.5 qt.
COLOR	Black (110)
Case Pack: 1	



CODE	EPP180SW
CAPACITY	1 each 8" deep food pan*
EXTERIOR DIM.	L 23.6" x W 15.7" x H 12.4"
INTERIOR DIM.	L 21.2" x W 13.3" x H 10"
UNIT WEIGHT	2.6 lbs.
VOLUME	48.6 qt.
COLOR	Black (110)
Case Pack: 1	



CODE	EPP180LSW
CAPACITY	1 each 8" deep food pan*
EXTERIOR DIM.	L 26.8" x W 15.7" x H 12.6"
INTERIOR DIM.	L 21.2" x W 13.9" x H 10"
UNIT WEIGHT	2.6 lbs.
VOLUME	48.6 qt.
COLOR	Black (110)
Case Pack: 1	

COMING SOON



CODE	EPP300
CAPACITY	3 each 4" deep food pan*
EXTERIOR DIM.	L 25.2" x W 17.3" x H 18.7"
INTERIOR DIM.	L 21" x W 13" x H 14.6"
UNIT WEIGHT	7 lbs.
VOLUME	63.4 qt.
COLOR	Black (110)
Case Pack: 1	



CODE	EPP400
CAPACITY	4 each 4" deep food pan*
EXTERIOR DIM.	L 25.2" x W 17.3" x H 24.6"
INTERIOR DIM.	L 21" x W 13" x H 20.7"
UNIT WEIGHT	8.6 lbs.
VOLUME	90.9 qt.
COLOR	Black (110)
Case Pack: 1	



*Or equivalent



Cam GoBox[®] Tips

1. Fill carrier to capacity to maximize temperature retention.
2. Use food pan or plastic liner to keep carrier sanitary.
3. Clean up spills promptly after use.
4. Air carrier out following use.
5. Wash regularly with vinegar and water solution.

