

zümex®

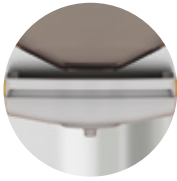
Speed Pro

The fastest and most robust



The most capable series that provides **efficient, safe, and an impeccable end product**; designed to satisfy large juice demands.

From its feeder to the electronic Intelligent Touch, everything has been take care of to optimise **the freshly squeezed juice service in your business.**



Speed Pro Basic

Speed Pro Basic

- The perfect model for restaurants with a high juice demand due to its **capacity and easy cleaning**. Ideal for your convenience.
- It allows you to program the desired number of fruits to be squeezed.
- It includes an orange counter.

.....

Dimensions	23.3" x 23" x 38.6"	Net weight	146.1 lb
-------------------	---------------------	-------------------	----------

.....



Speed Pro Cooler Podium

Speed Pro Cooler Podium

Freshly squeezed and refrigerated juice, ready to drink. With temperature-controlled cooling device, 1.85 gal. tank and level detector.

.....

Dimensions	26.6" x 28.7" x 72.3"	Net weight	259.6 lb
-------------------	-----------------------	-------------------	----------

.....



Original System®



Antibacterial Technology

Technical Characteristics

Fruits per minute	40	Consumption	2.7 A 2.4 A (Cooler)
Feeder capacity	44 lb	Voltage	115 V 60 Hz
Fruit size	2.56 - 3.19	Power	320 W 0.4 HP 560 W 0.75 HP (Cooler)
Gallons per minute	Approximately 1 gal/min	Security	Triple safety detector and motor seizure detection

Accessories



Squeezing Kits
S (1.77 - 2.64)
L (2.95 - 3.74)



Dynamic Cutting System DCS



Countertop Kit



Bottle Rack unit



Protection and hygiene accessories