



# OVEN / PROOFER COMBINATION



Oven/Proofer, Electric, Oven (3) 18" x 26" or (6) 13" x 18" Pan Capacity, Proofer (9) 18" x 26" or (18) 13" x 18" Pan Capacity, Solid State Controls, Tempered Glass Field Reversible Oven Doors, Indicator Light for Thermostats, Manual Fill Proofer, V-Air Technology, Separate Heat & Humidity Controls for Proofer, 3" Locking Casters, Stainless Steel Construction, 5.13kW, cETLus, NSF



PROJECT \_\_\_\_\_  
 ITEM NO. \_\_\_\_\_  
 NOTES \_\_\_\_\_

MODEL NUMBER: **QB-3/9 , QBT-3/9**



**FEATURES**

- Temperatures reaching 425°F (218°C)
- V-Air Technology for Even Baking
- QB Series**
  - Manual Fill Proofer
  - Separate Times for Oven & Proofer
  - Indicator Light for Thermostat
- QBT Series**
  - Intuitive Touch Screen
  - Innovative Proofer Design with Automist Technology

**CONSTRUCTION**

- Cool-To-Touch Doors
- Magnetic Door Latches
- Heavy Duty Casters
- Overflow Drain & Pan
- Stainless Steel Construction
- Left or Right Hinged

**OPTIONS & ACCESSORIES**

- QB Series**
  - Internal Steam for Oven
  - Automist Humidity
  - Warmer in Proofer
  - Two Speed Fan
  - Wire Shelf
  - Water Filter (recommended)
- QBT Series**
  - Water Filter (recommended)
  - Wire Shelf

**CLEARANCES**

- 4" [All Sides of Unit]

**WARRANTY**

- One Year Labor & Two Year Parts



PICTURED WITH TOUCHSCREEN



Model	Crated Weight	Overall Dimensions			Interior Dimensions						Pan Capacity		Shelf Spacing	
					Oven			Proofer			(18"x26")			
		W	D	H	W	D	H	W	D	H	Oven	Proofer	Oven	Proofer
QB-3/9	590 (131)	36 1/8"	28 5/8"	77 3/4"	26 1/4"	20 1/4"	15"	26 1/4"	20 1/4"	33 1/2"	3	9	4" (102)	3 1/2" (89)
		(918)	(727)	(1975)	(667)	(514)	(381)	(667)	(514)	(851)				
QBT-3/9	630 (286)	38 1/2"	28 5/8"	77 3/4"	26"	18 1/2"	14 1/2"	26"	18 1/2"	33 3/8"	3	9	4" (102)	3 1/2" (89)
		(978)	(727)	(1975)	(660)	(470)	(368)	(660)	(470)	(848)				

SPECIFICATIONS SUBJECT TO CHANGE WITHOUT NOTICE

KCL & REVIT DRAWINGS UPON REQUEST

REVISION C | 09/08/22

Follow Us



NU-VU

5600 13th Street, Menominee, MI 49858

906.863.4401 | 800.338.9886 | www.nu-vu.com

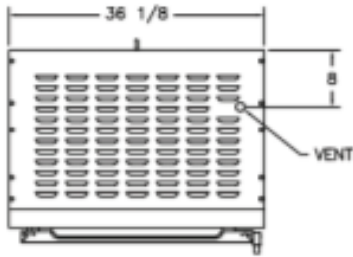




PROJECT \_\_\_\_\_  
 ITEM NO. \_\_\_\_\_  
 NOTES \_\_\_\_\_

MODEL NUMBER: **QB-3/9 , QBT-3/9**

**DRAWINGS**

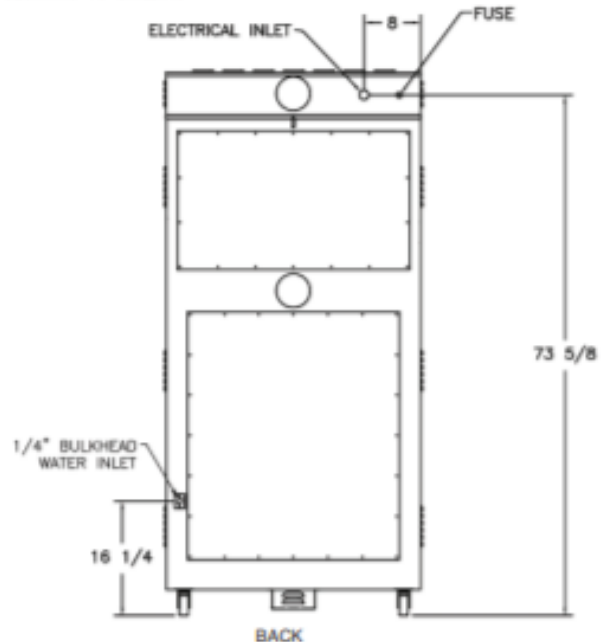
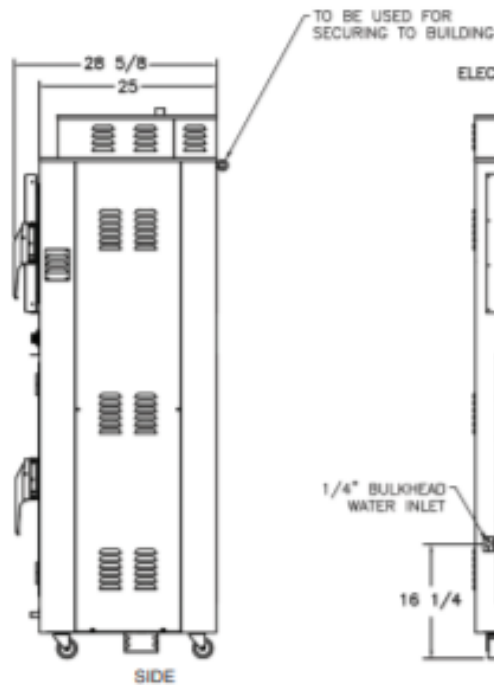
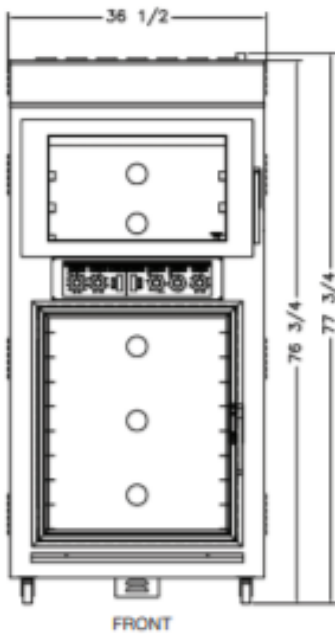


INTERIOR DIMENSIONS:

OVEN – 15”H X 26-1/4”W X 20-1/4”D  
 PROOFER – 33-1/2”H X 26-1/4”W X 20

DOOR SWING:

34-3/8”



**ELECTRICAL SYSTEM**

Model	Water Inlet	Electrical System *ground wire not included						
		Volts	Phases	Amps	kW	Wires*	Hz	NEMA
QB-3/9	1/4" (6)	208	1/3	28.5/16.5	5.135	2/3	60	-
		240	1/3	14.5/12.5	5.135	2/3	60	
QBT-3/9	1/4" (6)	208	1/3	28.5/16.5	5.2	3/4	60	-
		240	1/3	14.5/12.5	5.2	3/4	60	

SPECIFICATIONS SUBJECT TO CHANGE WITHOUT NOTICE

KCL & REVIT DRAWINGS UPON REQUEST

REVISION C | 9/8/22

Follow Us



NU-VU

5600 13th Street, Menominee, MI 49858

906.863.4401 | 800.338.9886 | www.nu-vu.com

