



# PSW1-2100

## Heated GrandStand™

### Warm Water Wash Stand with Wheels

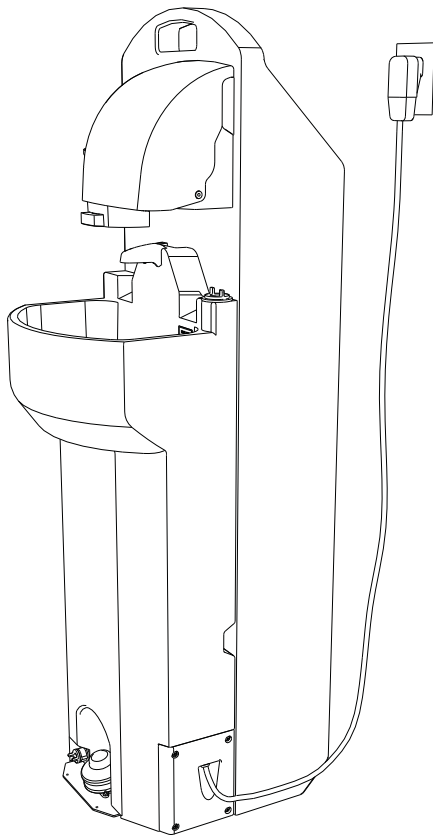
### User Manual

#### General Overview

*The PSW1-2100 GrandStand™ sink is easily transportable warm water sink with a built-in handle and rubber treaded wheels. Designed for use where convenient hand washing is desired or required, such as offices, classrooms, construction sites, festivals, food service locations, etc., to be used indoors or out. The compact design allows it to be used most anywhere. Ideal where space is limited. Shipped fully assembled.*

#### Specifications

Height	62 in	157.5 cm
Width	18 in	45.5 cm
Depth	22 in	55.9 cm
Fresh Water Capacity	17 gal	64.4 L
Gray Water Capacity	19 gal	72 L
Pump Capacity (per stroke)	2 fl oz	59.14 ml
Soap Dispenser Capacity	30 fl oz	887 ml
Number of Single Dispenses	1088	1088
Paper Towel Capacity	1 Roll or 500 Single Fold (2 packs - Georgia Pacific 23504)	
Weight Empty	47 lb	21.3 kg
Weight Full	189 lb	85.7 kg
Power Requirement	110 V	15 Amp
Nominal Water Temp	110°	

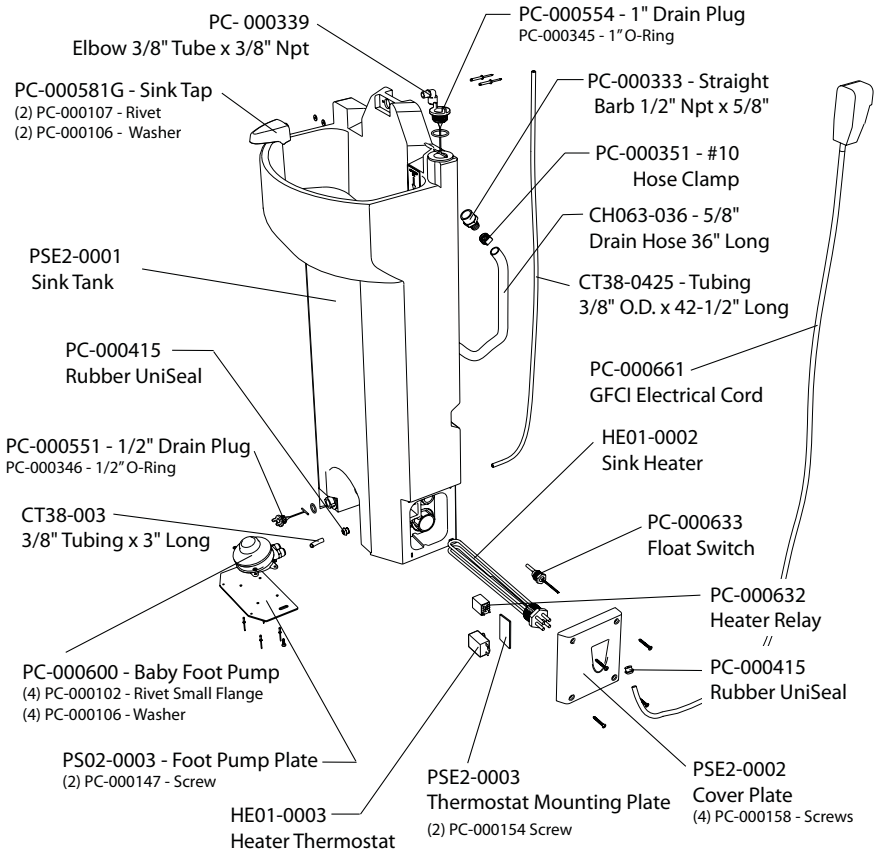


*All materials, including resin, pigments and additives used to make the plastic components as well as the plumbing components that come in contact with the fresh water are U.S. FDA food grade compliant.*

#### Sinks-N-More

2500 Gaspar Ave.  
Whiting, IN 46394  
Phone: 800-292-1305  
Fax: 219-659-0625  
www.sinksnmore.com

## Parts Drawing - Exploded View



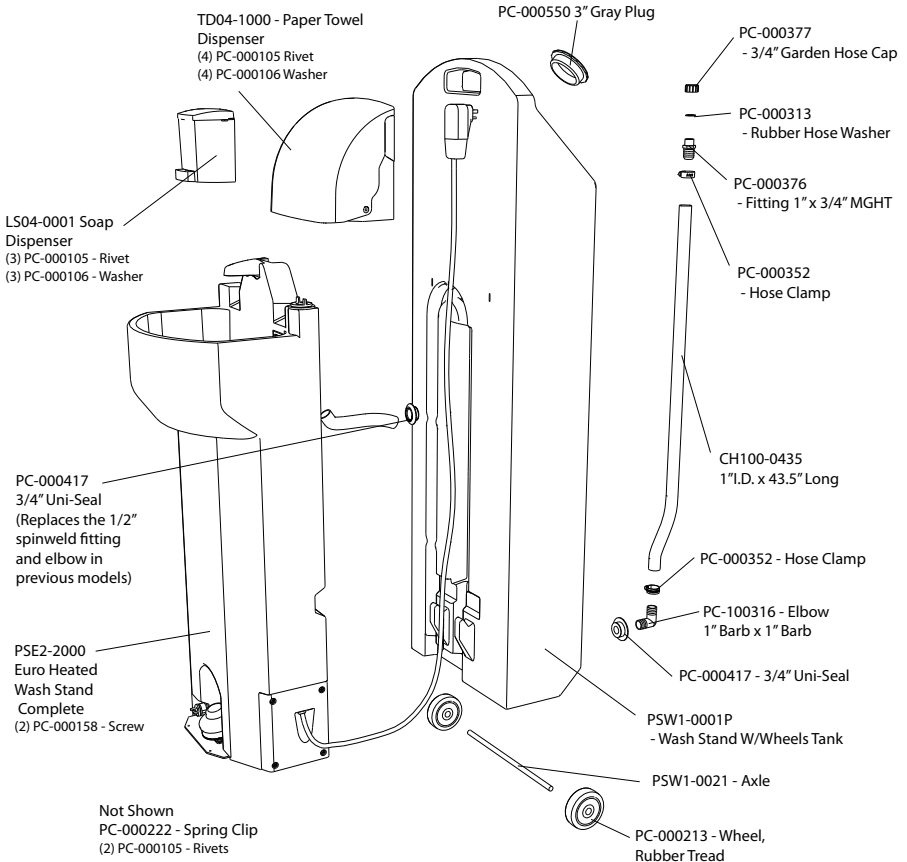
### Filling with Fresh Water

**NOTE: Unit must be filled prior to plugging in the heater.** Unscrew the 1" fill plug located at the top, right hand side of the wash basin. Insert a standard garden or similar type hose and fill with a few gallons of fresh water to perform a system check. Depress the pump a few times to "prime" it (*the pump has a built-in check valve that will hold a prime between uses*). If needed, continue filling to the top (*which is the 17 gallon water level capacity*). Tighten the plug when finished.

### Water Heater Information

This unit is equipped with a heating element to heat the fresh water. It is controlled by a built in thermostat to maintain a nominal water temperature of 110°. The unit is equipped with a float switch to turn off power to the heating element if the water level should drop too low. The unit may take up to one hour to heat the water, depending upon the temperature of the water that it is filled with. The system is electrically protected with a GFCI plug. If for some reason, the GFCI were to trip, simply push the reset button on the plug. If the unit trips the GFCI protection again, remove from service, and have a qualified electrician inspect the sink.

## Parts Drawing - Exploded View



### **Emptying Fresh Water**

Drain the fresh water by unscrewing the 1/2" plug located at the bottom of the sink, to the left of the foot pump. Tighten the plug when finished.

### **Emptying Gray Water**

Wheel the sink to a proper and approved drain location. Pull the hose out from the rib on the back of the holding tank, remove the hose cap and empty the gray water. Replace the cap when finished.

### **Paper Towel Dispenser**

The dispenser is designed to accept single or multi fold, as well as roll towels. The recommended towels are the *Georgia Pacific #23504* - single fold or the *Baywest Ecosoft #46200* - roll towel. **NOTE: When using other towels, be sure the width does not exceed 9-1/2".**

### **Soap Dispenser**

To fill the soap dispenser, open it by placing your hands on both sides of the dispenser and pressing up on the tabs at the rear of the lid. Fill with 30 fluid ounces (or desired amount) of liquid soap and snap the lid back on. To remove the dispenser for transporting the unit, remove the lid, and locate the tab on the middle of the mounting plate at the rear of the dispenser. Push in on it, and slide the dispenser up, and off. Snap the lid back onto the dispenser. **IMPORTANT:** Do not lie flat or transport your GrandStand before either removing or completely draining the soap dispenser to avoid accidental spillage of liquid soap as a slip/drop hazard may occur.

### **Winterizing**

- Drain all water from the tanks.
- Depress the foot pump to clear lines.
- Flush tank with a solution of chlorine and water.

### **CLEANING AND MAINTENANCE**

Use a mild soap to clean all surfaces and component parts.

Minor scratches and abrasions can be lightly sanded or scrubbed with a mild abrasive cleaner (*such as "Soft Scrub"*) that contains calcium carbonate, hypochlorate bleach and detergents. Be sure to follow the cleaning product directions since these ingredients may cause hazardous gases when mixed with other chemicals. Rinse the cleaned area and buff with a conventional wax.

Some light scratches may also be hidden by using an industrial hot air gun.

To keep the water fresh add a "Fresh Sink Tablet" (*chlorinated tablet*)(our part number CK01-0030) each time the sink is filled with water.

For a source of cleaning, deodorizing and paper products contact:

**SINKS-N-MORE  
2500 GASPARE AVE.  
WHITING, IN 46394-2175  
800-292-1305  
www.sinksnmore.com**

### **MISSION STATEMENT**

"Sinks-N-More is a family owned, state of the art, plastics manufacturing company dedicated to providing its employees with a work environment committed to excellence, and its customers with innovative products, services and technology that meet or exceed their requirements."

**THANK YOU FOR PURCHASING SINKS-N-MORE PRODUCTS!**

Look for us on the Web @ [www.SinksNMore.com](http://www.SinksNMore.com)