



TABLES AND SINKS

SERVING THE FOOD INDUSTRY SINCE 1951

WORKTABLES WITH CABINET AND DRAWERS



FEATURES

- 16-gauge 430 stainless steel flat top shelf
- 18-gauge 430 stainless steel hat channel and pillaster strip
- 18-gauge 430 stainless steel back, side, bottom and intermediate shelf
- 18-gauge 430 stainless steel sliding doors with recessed handle
- Stainless steel leg with stainless steel bullet feet



WARRANTY



Authorized Dealer

TABLES AND SINKS

30" X 72" WORKTABLE WITH CABINET AND DRAWER

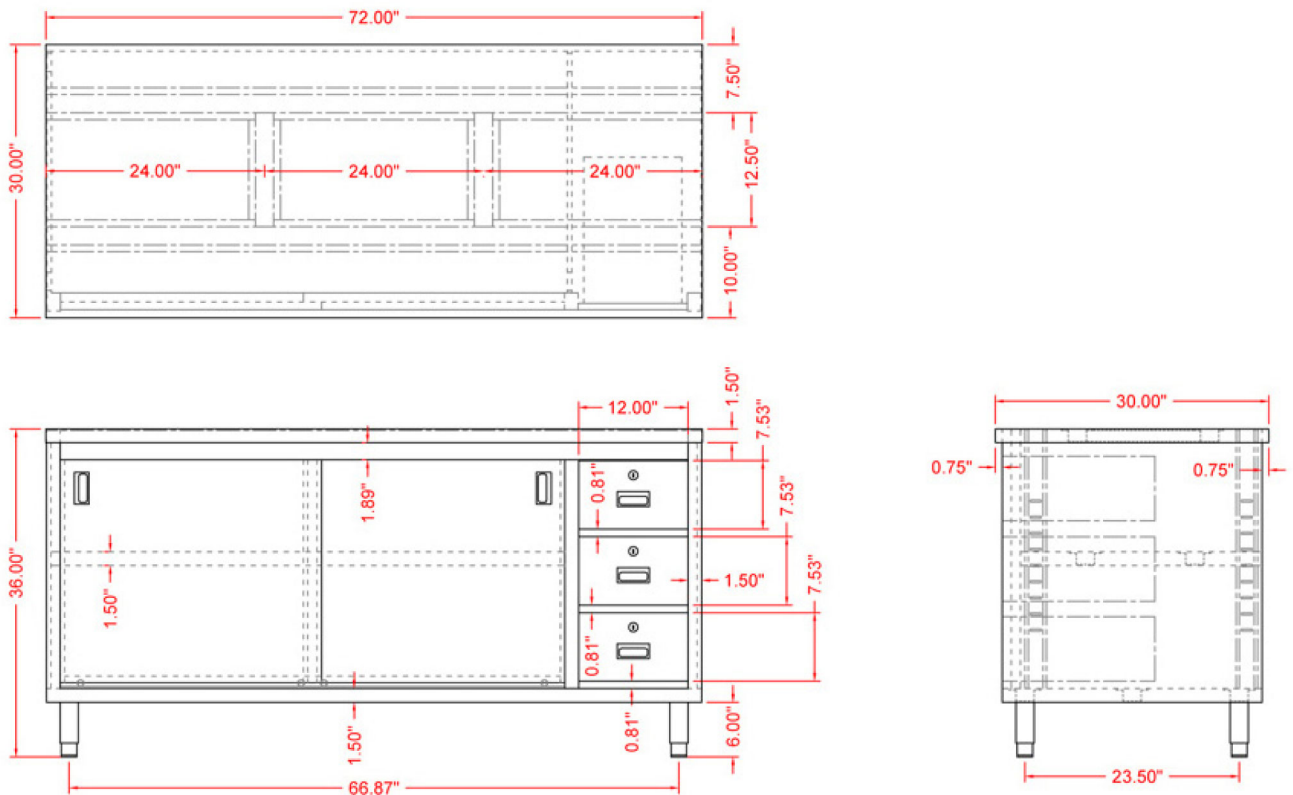


Product may not be exactly as shown.

TECHNICAL SPECIFICATIONS

ITEM	44197
LOAD CAPACITY	600 lbs. / 272 kg.
WEIGHT	252 lbs. / 114 kg.
DIMENSIONS (DWH)	30" x 72" x 36" 762 x 1828.8 x 914.4 mm
GROSS WEIGHT	263 lbs. / 119.3 kg.
GROSS DIMENSIONS	31" x 31" x 74" 787.4 x 787.4 x 1879.6 mm

TECHNICAL DRAWINGS WITH DETAILED DIMENSIONS



Telephone: 416-740-2424
 Email: help@nellaonline.com
 Website: www.nellaonline.com