



# TABLES AND SINKS

SERVING THE FOOD INDUSTRY SINCE 1951

## WORKTABLES WITH CABINET AND SLIDING DOORS



### FEATURES

- 16-gauge 430 stainless steel flat top shelf
- 18-gauge 430 stainless steel hat channel and pillaster strip
- 18-gauge 430 stainless steel back, side, bottom and intermediate shelf
- 18-gauge 430 stainless steel sliding doors with recessed handle
- Stainless steel leg with stainless steel bullet feet



**WARRANTY**



Authorized Dealer

# TABLES AND SINKS

30" X 72" WORKTABLE WITH CABINET AND SLIDING DOORS



# NELLA

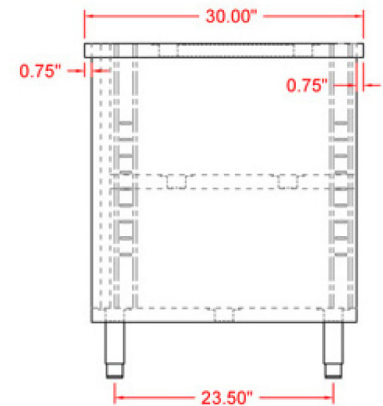
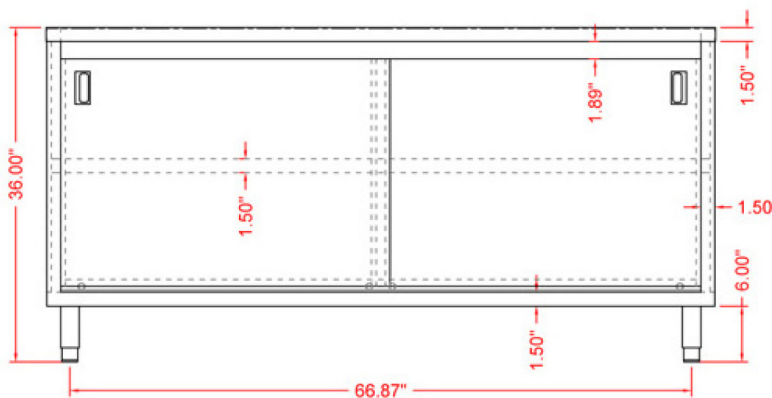
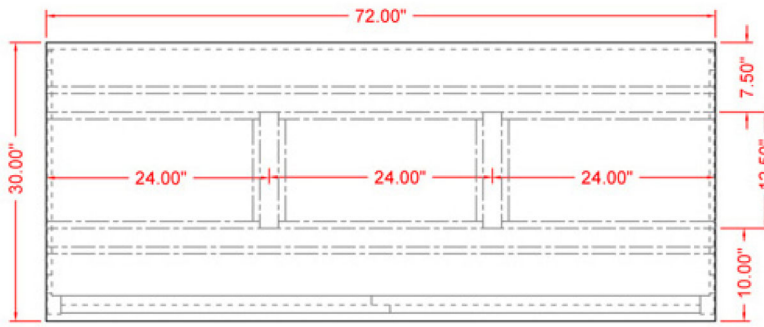


*Product may not be exactly as shown.*

## TECHNICAL SPECIFICATIONS

ITEM	44194
LOAD CAPACITY	480 lbs. / 217.7 kg.
WEIGHT	219 lbs. / 99 kg.
DIMENSIONS (DWH)	30" x 72" x 36" 762 x 1828.8 x 914.4 mm
GROSS WEIGHT	230 lbs. / 104 kg.
GROSS DIMENSIONS	31" x 31" x 74" 635 x 787.4 x 1879.6 mm

TECHNICAL DRAWINGS WITH DETAILED DIMENSIONS



# NELLA

Telephone: 416-740-2424  
 Email: [help@nellaonline.com](mailto:help@nellaonline.com)  
 Website: [www.nellaonline.com](http://www.nellaonline.com)