



TABLES AND SINKS

SERVING THE FOOD INDUSTRY SINCE 1951

WORKTABLES WITH CABINET AND SLIDING DOORS



FEATURES

- 16-gauge 430 stainless steel flat top shelf
- 18-gauge 430 stainless steel hat channel and pillaster strip
- 18-gauge 430 stainless steel back, side, bottom and intermediate shelf
- 18-gauge 430 stainless steel sliding doors with recessed handle
- Stainless steel leg with stainless steel bullet feet



WARRANTY



Authorized Dealer

TABLES AND SINKS

30" X 48" WORKTABLE WITH CABINET AND SLIDING DOORS

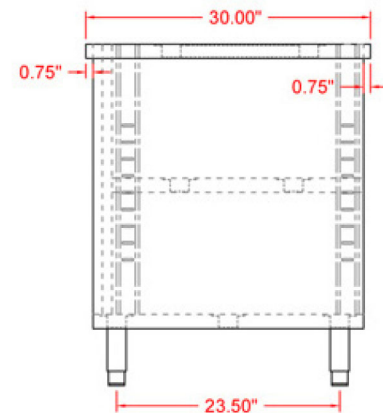
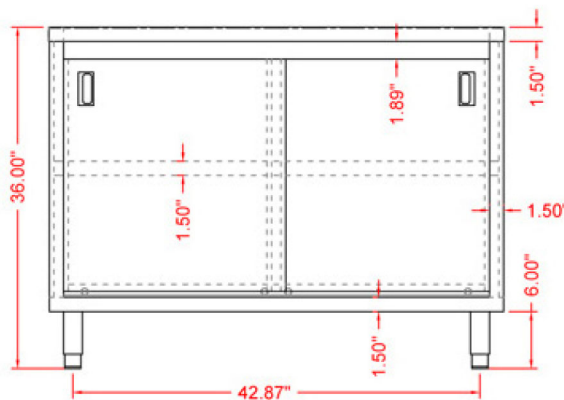
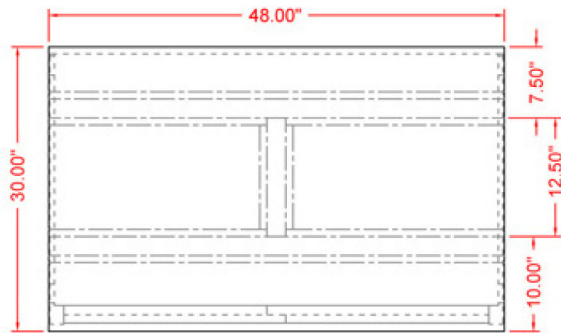


Product may not be exactly as shown.

TECHNICAL SPECIFICATIONS

ITEM	44192
LOAD CAPACITY	350 lbs. / 159 kg.
WEIGHT	159 lbs. / 72 kg.
DIMENSIONS (DWH)	30" x 48" x 36" 762 x 1219.2 x 914.4 mm
GROSS WEIGHT	168 lbs. / 76 kg.
GROSS DIMENSIONS	31" x 31" x 50" 635 x 787.4 x 1968.5 mm

TECHNICAL DRAWINGS WITH DETAILED DIMENSIONS



Telephone: 416-740-2424
Email: help@nellaonline.com
Website: www.nellaonline.com