



# TABLES AND SINKS

SERVING THE FOOD INDUSTRY SINCE 1951

## WORKTABLES WITH CABINET AND SLIDING DOORS



### FEATURES

- 16-gauge 430 stainless steel flat top shelf
- 18-gauge 430 stainless steel hat channel and pillaster strip
- 18-gauge 430 stainless steel back, side, bottom and intermediate shelf
- 18-gauge 430 stainless steel sliding doors with recessed handle
- Stainless steel leg with stainless steel bullet feet



Authorized Dealer

# TABLES AND SINKS

24" X 72" WORKTABLE WITH CABINET AND SLIDING DOORS



# NELLA

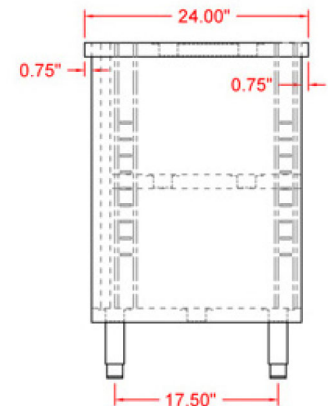
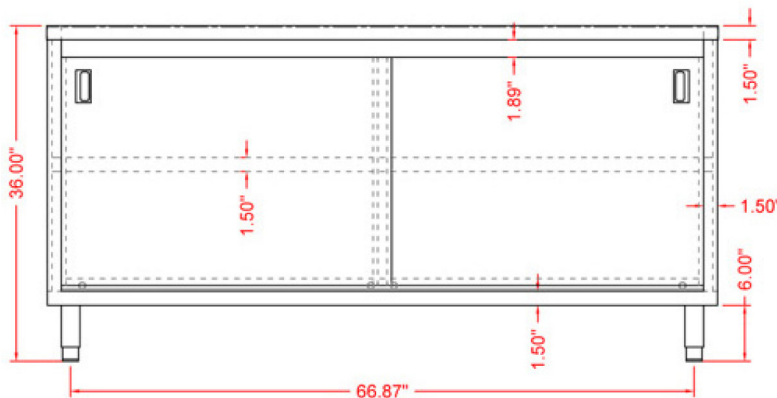


*Product may not be exactly as shown.*

## TECHNICAL SPECIFICATIONS

ITEM	44188
LOAD CAPACITY	480 lbs. / 217.7 kg.
WEIGHT	198 lbs. / 90 kg.
DIMENSIONS (DWH)	24" x 72" x 36" 609.6 x 1828.8 x 914.4 mm
GROSS WEIGHT	207 lbs. / 93.89 kg.
GROSS DIMENSIONS	25" x 31" x 74" 635 x 787.4 x 1879.6 mm

TECHNICAL DRAWINGS WITH DETAILED DIMENSIONS



# NELLA

Telephone: 416-740-2424  
 Email: [help@nellaonline.com](mailto:help@nellaonline.com)  
 Website: [www.nellaonline.com](http://www.nellaonline.com)