



TABLES AND SINKS

SERVING THE FOOD INDUSTRY SINCE 1951

WORKTABLES WITH CABINET AND SLIDING DOORS



FEATURES

- 16-gauge 430 stainless steel flat top shelf
- 18-gauge 430 stainless steel hat channel and pillaster strip
- 18-gauge 430 stainless steel back, side, bottom and intermediate shelf
- 18-gauge 430 stainless steel sliding doors with recessed handle
- Stainless steel leg with stainless steel bullet feet



Authorized Dealer

TABLES AND SINKS

24" X 48" WORKTABLE WITH CABINET AND SLIDING DOORS



NELLA

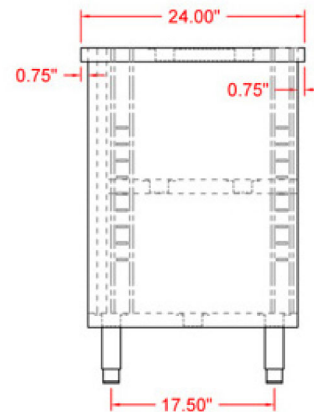
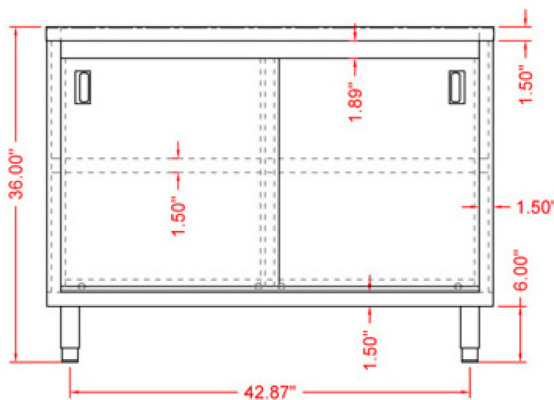


Product may not be exactly as shown.

TECHNICAL SPECIFICATIONS

ITEM	44186
LOAD CAPACITY	350 lbs. / 159 kg.
WEIGHT	140 lbs. / 63.5 kg.
DIMENSIONS (DWH)	24" x 48" x 36" 609.6 x 1219.2 x 914.4 mm
GROSS WEIGHT	147 lbs. / 66.67 kg.
GROSS DIMENSIONS	25" x 31" x 50" 635 x 787.4 x 1270 mm

TECHNICAL DRAWINGS WITH DETAILED DIMENSIONS



NELLA

Telephone: 416-740-2424
 Email: help@nellaonline.com
 Website: www.nellaonline.com