

GET BLENDING



DISCOVER MORE AT [KITCHENAID.COM/QUICKSTART](https://www.kitchenaid.com/quickstart)

For exciting recipes, demo videos, product registration, and more — our quick start page has what you need to help you get the most from your new product.

RECIPES



GUIDES



VIDEOS



SUPPORT



REGISTER



[KitchenAid.com](https://www.kitchenaid.com) | [KitchenAid.ca](https://www.kitchenaid.ca) | USA: 1.800.541.6390 | Canada: 1.800.807.6777

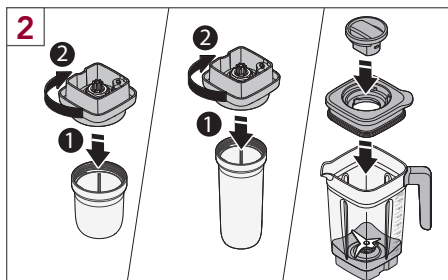
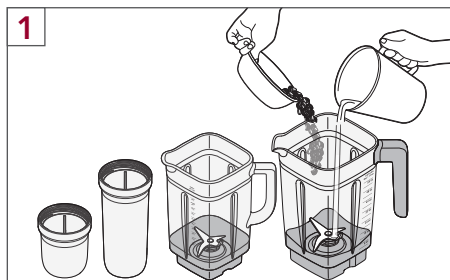
W11333855B
KSB40**, 7KSB40**
05/2019

®/™ ©2019 KitchenAid. All rights reserved. Used under license in Canada.

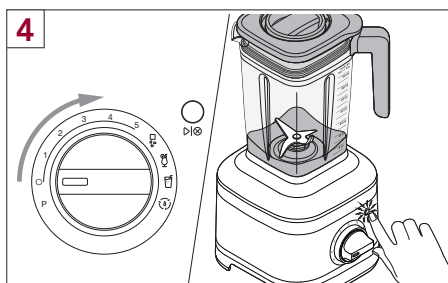
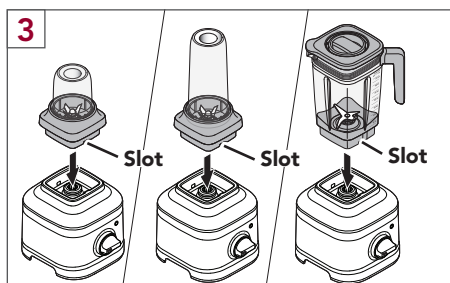
GET STARTED

QUICK START GUIDE

The KitchenAid® K400 Blender allows you to customize your blend with multiple jar options and a variable speed dial. For complete instructions and videos, go to www.KitchenAid.com/Quickstart.

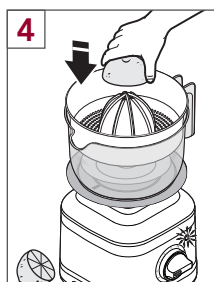
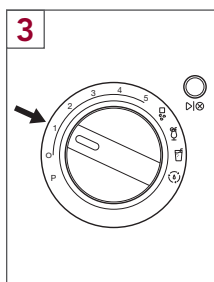
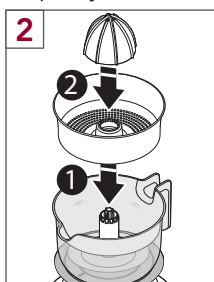
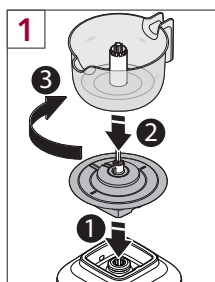


NOTE: Do not fill jars past the maximum capacity (8 oz, 16 oz, 48 oz and 56 oz).



ICON	DESCRIPTION
P	Pulse.
1 - 5	Manual variable speed control.
	Ice Crush.
	Icy Drink.
	Smoothie.
	Self-clean cycle.

Citrus Press (Maximum capacity: 32 oz)



NOTE: Please refer to your Use and Care Guide for detailed instructions.

PRÊT? MÉLANGEZ!



DÉCOUVREZ PLUS VISITEZ [KITCHENAID.COM/QUICKSTART](https://www.kitchenaid.com/quickstart)

Pour découvrir de nouvelles recettes, voir des vidéos de démonstration, l'enregistrement du produit, et plus – notre page de démarrage rapide comprend tout ce dont vous avez besoin pour vous aider à profiter de votre nouveau produit.

RECETTES



GUIDES



VIDEOS



ASSISTANCE



ENREGISTRER



[KitchenAid.com](https://www.kitchenaid.com) | [KitchenAid.ca](https://www.kitchenaid.ca) | USA: 1.800.541.6390 | Canada: 1.800.807.6777

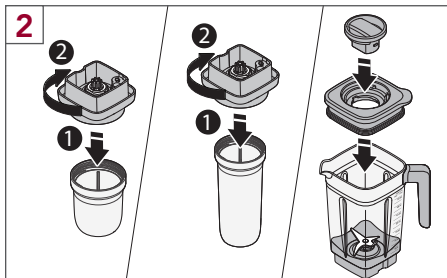
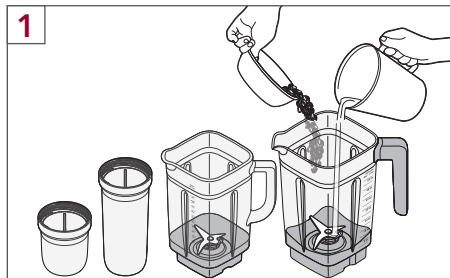
W11333855B
KSB40**, 7KSB40**
05/2019

®/™ ©2019 KitchenAid. Tous droits réservés. Utilisé sous licence au Canada.

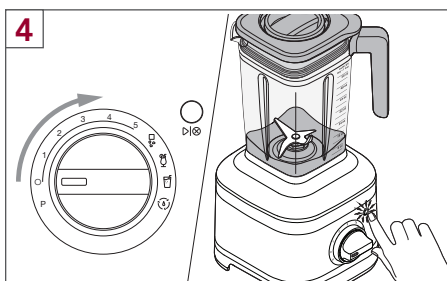
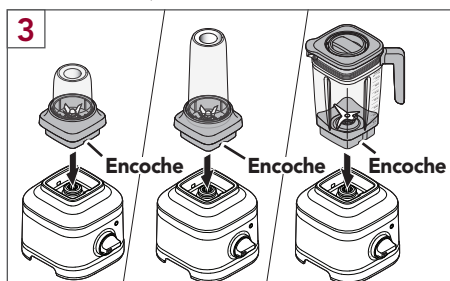
PREMIERS PAS

GUIDE DE DÉMARRAGE RAPIDE

Le mélangeur KitchenAid® K400 vous permet de personnaliser votre mélange avec les options de pichets multiples et le bouton de vitesse variable. Rendez-vous sur www.KitchenAid.com/Quickstart pour obtenir des instructions complètes et voir des vidéos de démonstration.

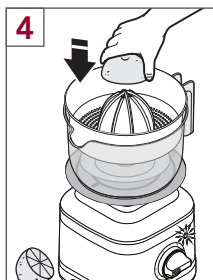
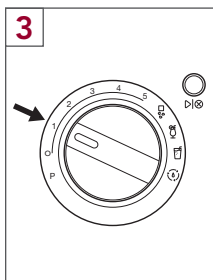
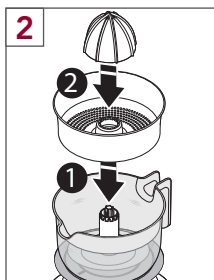
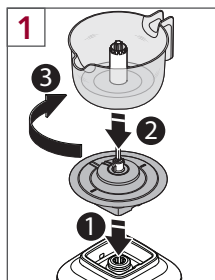


REMARQUE : Ne pas remplir les pots au-delà de leur capacité maximale (8 oz, 16 oz, 48 oz et 56 oz).



ICÔNE	DESCRIPTION
P	Pulsation.
1 - 5	Commande manuelle de vitesse variable.
	Broyage de glace.
	Boissons glacées.
	Smoothies.
	Programme d'autonettoyage.

Presse-agrumes (Capacité maximale : 32 oz)



REMARQUE : Veuillez consulter le Guide d'utilisation et d'entretien pour des instructions détaillées.

PREPÁRESE



DESCUBRA MÁS EN [KITCHENAID.COM/QUICKSTART](https://www.kitchenaid.com/quickstart)

Para ver recetas interesantes, videos con demostraciones o para registrar productos y más, consulte nuestra página de guía rápida para comenzar que tiene todo lo necesario para ayudarlo a sacar el máximo provecho de su nuevo producto.

RECETAS



GUÍAS



VIDEOS



SOPORTE
TÉCNICO



REGISTRO



[KitchenAid.com](https://www.kitchenaid.com) | [KitchenAid.ca](https://www.kitchenaid.ca) | USA: 1.800.541.6390 | Canada: 1.800.807.6777

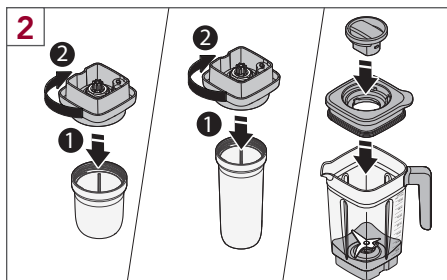
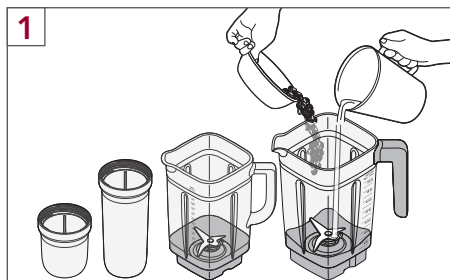
W11333855B
KSB40**, 7KSB40**
05/2019

®/™ ©2019 KitchenAid. Todos los derechos reservados. Usado en Canadá bajo licencia.

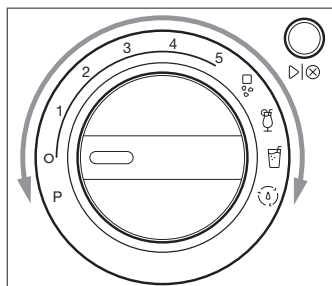
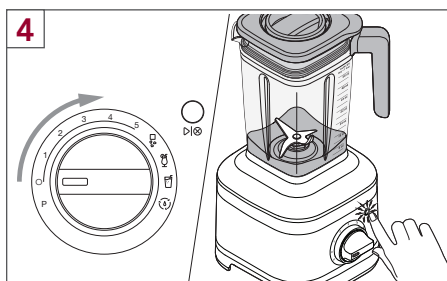
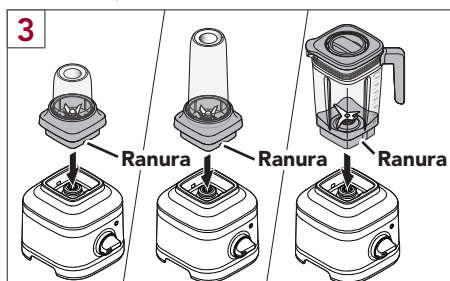
PARA COMENZAR

GUÍA RÁPIDA PARA COMENZAR

La licuadora KitchenAid® K400 le permite personalizar sus licuados en diferentes opciones de jarras y con diferentes velocidades. Para ver videos e instrucciones completas, visite www.KitchenAid.com/Quickstart.

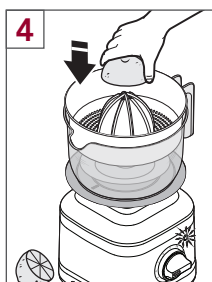
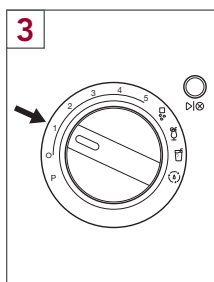
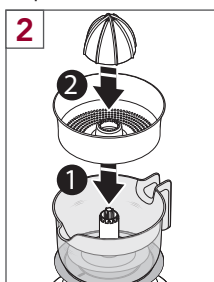
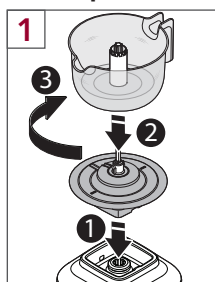


NOTA: No sobrepase la capacidad máxima de las jarras (8 onzas, 16 onzas, 48 onzas o 56 onzas).



ÍCONO	DESCRIPCIÓN
P	Pulsador.
1 A 5	Control manual de variación de velocidad.
	Hielo picado.
	Bebida helada.
	Licuado.
	Ciclo de autolimpieza.

Presna para cítricos (Capacidad máxima: 32 onzas)



NOTA: Consulte el Manual de uso y cuidado para ver instrucciones en más detalle.