

COOKING EQUIPMENT

COUNTERTOP STAINLESS STEEL GAS GRIDDLE WITH MANUAL CONTROL

GAS GRIDDLES WITH
MANUAL CONTROL
1 BURNER

GAS GRIDDLES WITH
MANUAL CONTROL
2 BURNERS

GAS GRIDDLES WITH
MANUAL CONTROL
3 BURNERS

GAS GRIDDLES WITH
MANUAL CONTROL
4 BURNERS



These **Nella Griddle** feature polished steel cooking surface for the best results in grilling. Breakfast, lunch or dinner, these griddles offers flexibility for your menu needs.

NELLA GAS EQUIPMENT SERIES

Answers the needs of modern, busy catering establishments for reliable, well-built equipment that offers flexibility, performance, style and value for money. Nella gas equipment has been designed with safety, ease of operation and performance as paramount. Nella has a stylish and robust modular design, constructed of high quality brushed stainless steel, large “cool to touch” dials, large heavy-duty adjustable feet and easy to clean and remove accessories.

**COUNTERTOP STAINLESS STEEL GAS GRIDDLE WITH
MANUAL CONTROL**

WITH 1 BURNER

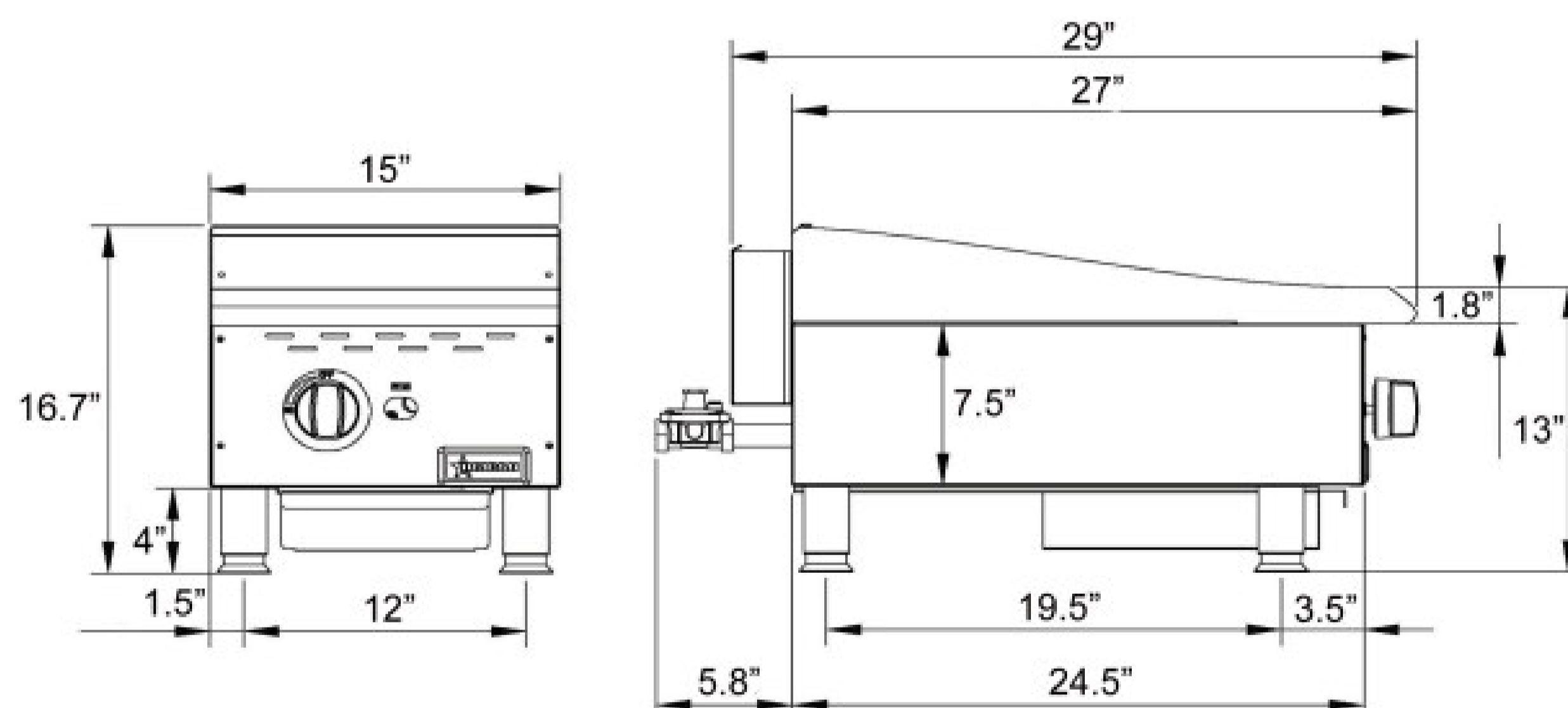


- Stainless steel construction and finish
- 3/4" thick polished steel and cooking surface
- Manually controlled independent cooking zones
- Large and robust dial controls
- Stainless steel burners
- Burner manual valves
- Removable full width waste tray
- Heavy-duty adjustable feet
- 3/4" rear gas connection
- Propane conversion kit (42968) included

SPECIFICATION

NUMBER OF BURNERS	1 BURNER
B.T.U.	30,000
COOKING AREA (WD)	15" X 20" / 380 X 510 MM
GAS TYPE	NATURAL GAS
TEMPERATURE CONTROL	MANUAL
DIMENSION (WDH)	15" X 32.7" X 16.7" / 380 X 830 X 425 MM
PACKAGING DIMENSIONS (WDH)	17" X 32" X 18.5" / 430 X 820 X 470 MM
WEIGHT	102.5 LBS/ 46.50 KG
PACKAGE WEIGHT	127 LBS/ 57.65 KG

TECHNICAL DRAWINGS WITH DETAILED DIMENSIONS



GAS CONVERSION TO BE COMPLETED BY AN APPROVED GAS FIELD TECHNICIAN



WWW.NELLAONLINE.COM
HELP@NELLAONLINE.COM

LOCATIONS

**148 NORFINCH DR
NORTH YORK, ON,
M3N 1X8
416-740-2424**

**433 QUEEN ST E.
TORONTO, ON,
M5A 1T5
416-847-1112**

**1164 ELLESMERE ROAD
SCARBOROUGH, ON,
M3N 1X8
416-292-0828**

**COUNTERTOP STAINLESS STEEL GAS GRIDDLE WITH
MANUAL CONTROL**

WITH 2 BURNERS

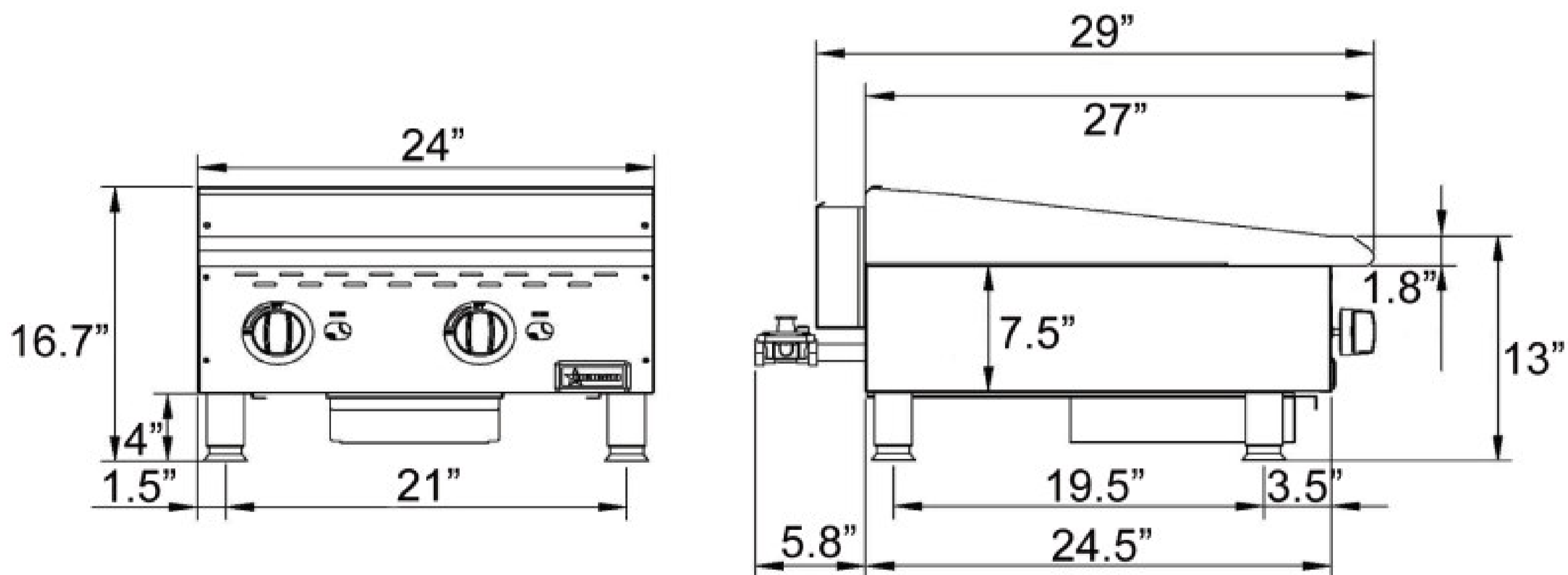


- Stainless steel construction and finish
- 3/4" thick polished steel and cooking surface
- Manually controlled independent cooking zones
- Large and robust dial controls
- Stainless steel burners
- Burner manual valves
- Removable full width waste tray
- Heavy-duty adjustable feet
- 3/4" rear gas connection
- Propane conversion kit (42969) included

SPECIFICATION

NUMBER OF BURNERS	2 BURNERS
B.T.U.	60,000
COOKING AREA (WD)	24" X 20" / 610 X 510 MM
GAS TYPE	NATURAL GAS
TEMPERATURE CONTROL	MANUAL
DIMENSION (WDH)	24" X 32.7" X 16.7" / 610 X 830 X 425 MM
PACKAGING DIMENSIONS (WDH)	26" X 32" X 18.5" / 660 X 820 X 470 MM
WEIGHT	153.6 LBS/ 69.65 KG
PACKAGE WEIGHT	186.6 LBS/ 84.65 KG

TECHNICAL DRAWINGS WITH DETAILED DIMENSIONS



GAS CONVERSION TO BE COMPLETED BY AN APPROVED GAS FIELD TECHNICIAN



WWW.NELLAONLINE.COM
HELP@NELLAONLINE.COM

LOCATIONS

**148 NORFINCH DR
NORTH YORK, ON,
M3N 1X8
416-740-2424**

**433 QUEEN ST E.
TORONTO, ON,
M5A 1T5
416-847-1112**

**1164 ELLESMERE ROAD
SCARBOROUGH, ON,
M3N 1X8
416-292-0828**

**COUNTERTOP STAINLESS STEEL GAS GRIDDLE WITH
MANUAL CONTROL**

WITH 3 BURNERS

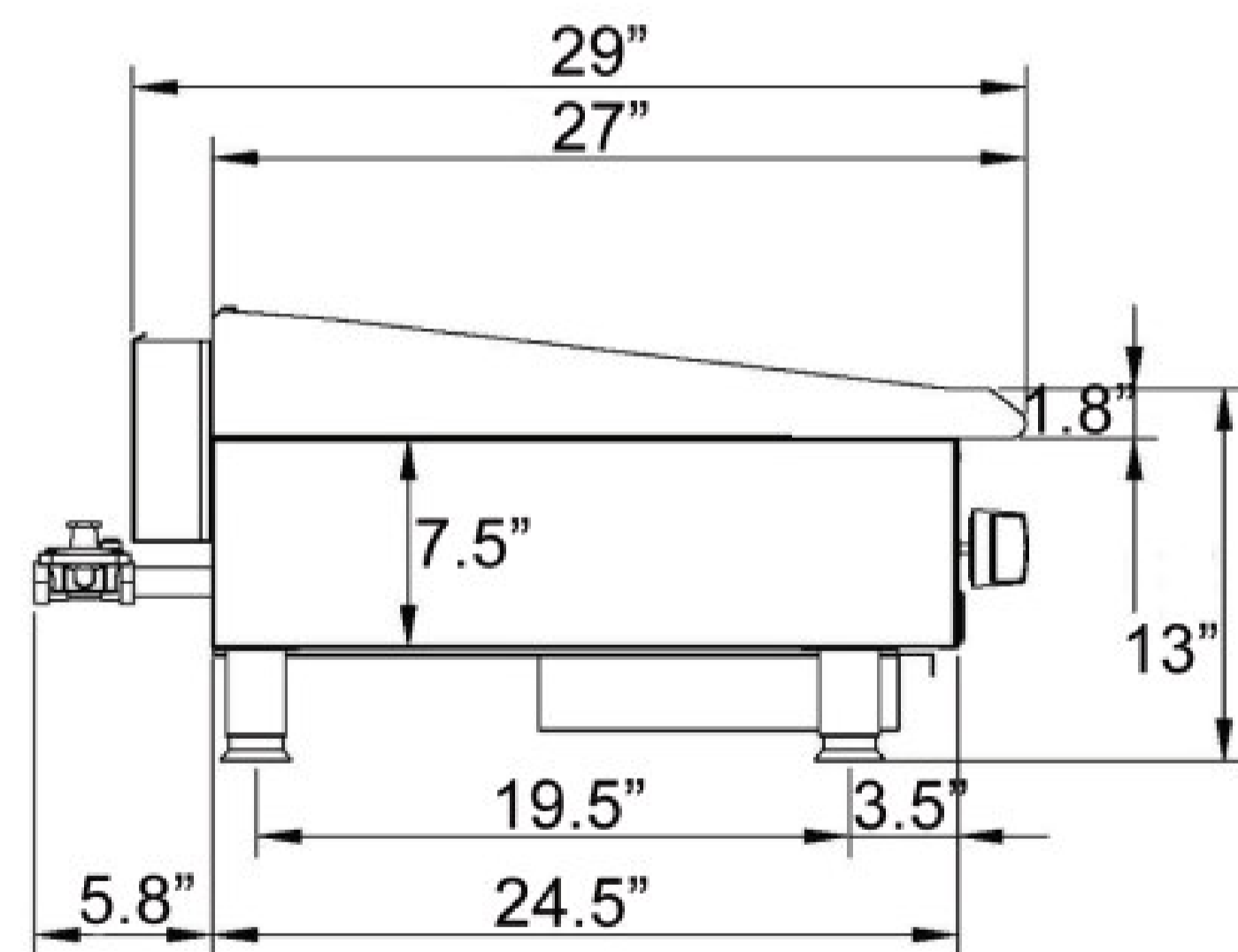
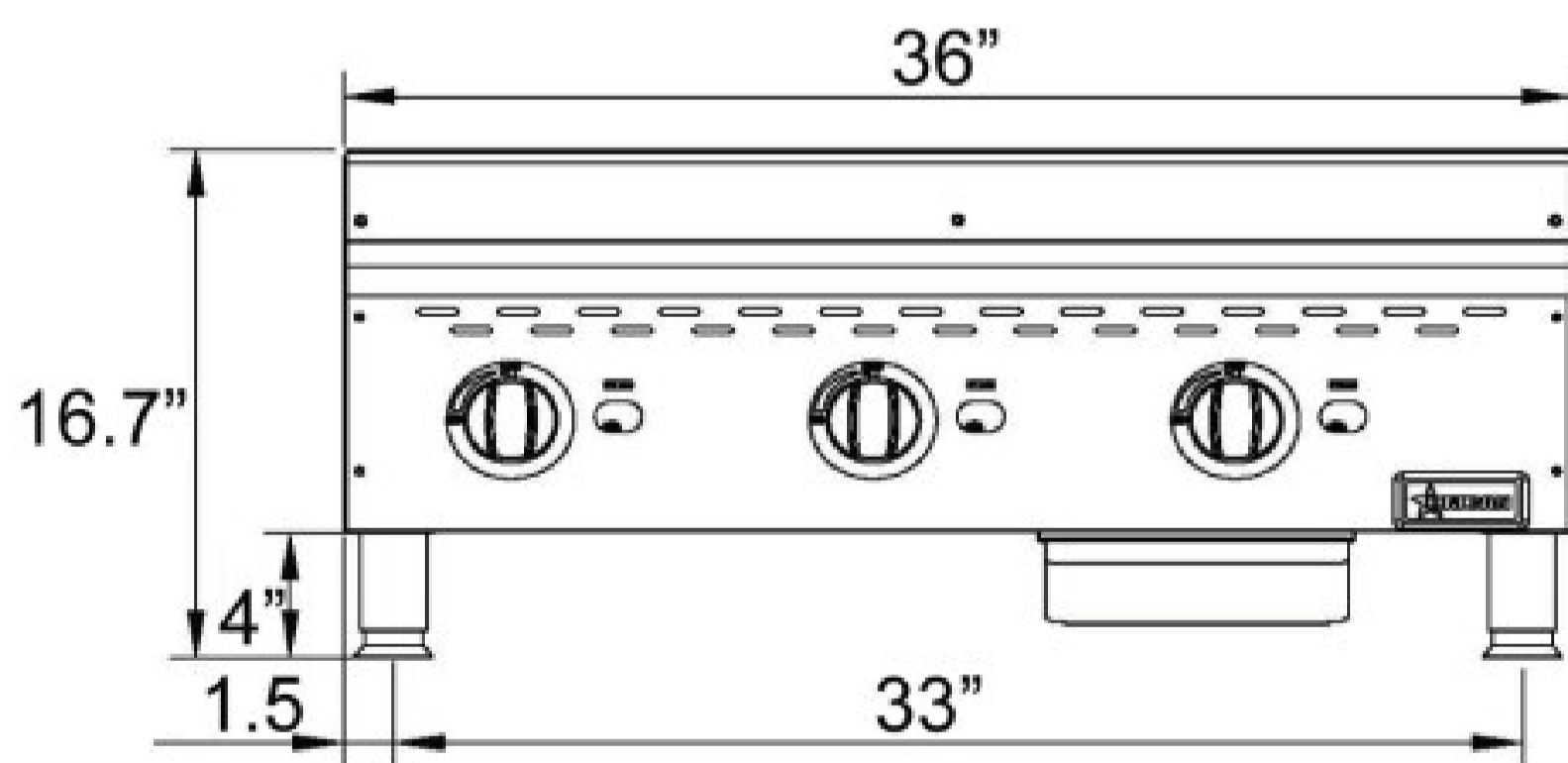


- Stainless steel construction and finish
- 3/4" thick polished steel and cooking surface
- Manually controlled independent cooking zones
- Large and robust dial controls
- Stainless steel burners
- Burner manual valves
- Removable full width waste tray
- Heavy-duty adjustable feet
- 3/4" rear gas connection
- Propane conversion kit (42970) included

SPECIFICATION

NUMBER OF BURNERS	3 BURNERS
B.T.U.	90,000
COOKING AREA (WD)	36" X 20" / 915 X 510 MM
GAS TYPE	NATURAL GAS
TEMPERATURE CONTROL	MANUAL
DIMENSION (WDH)	36" X 32.7" X 16.7" / 915 X 830 X 425 MM
PACKAGING DIMENSIONS (WDH)	38" X 32" X 18.5" / 965 X 820 X 470 MM
WEIGHT	221.6 LBS/ 100.50 KG
PACKAGE WEIGHT	268 LBS/ 121.70 KG

TECHNICAL DRAWINGS WITH DETAILED DIMENSIONS



GAS CONVERSION TO BE COMPLETED BY AN APPROVED GAS FIELD TECHNICIAN

NELLA

WWW.NELLAONLINE.COM
HELP@NELLAONLINE.COM

LOCATIONS

**148 NORFINCH DR
NORTH YORK, ON,
M3N 1X8
416-740-2424**

**433 QUEEN ST E.
TORONTO, ON,
M5A 1T5
416-847-1112**

**1164 ELLESMERE ROAD
SCARBOROUGH, ON,
M3N 1X8
416-292-0828**

**COUNTERTOP STAINLESS STEEL GAS GRIDDLE WITH
MANUAL CONTROL**

WITH 4 BURNERS

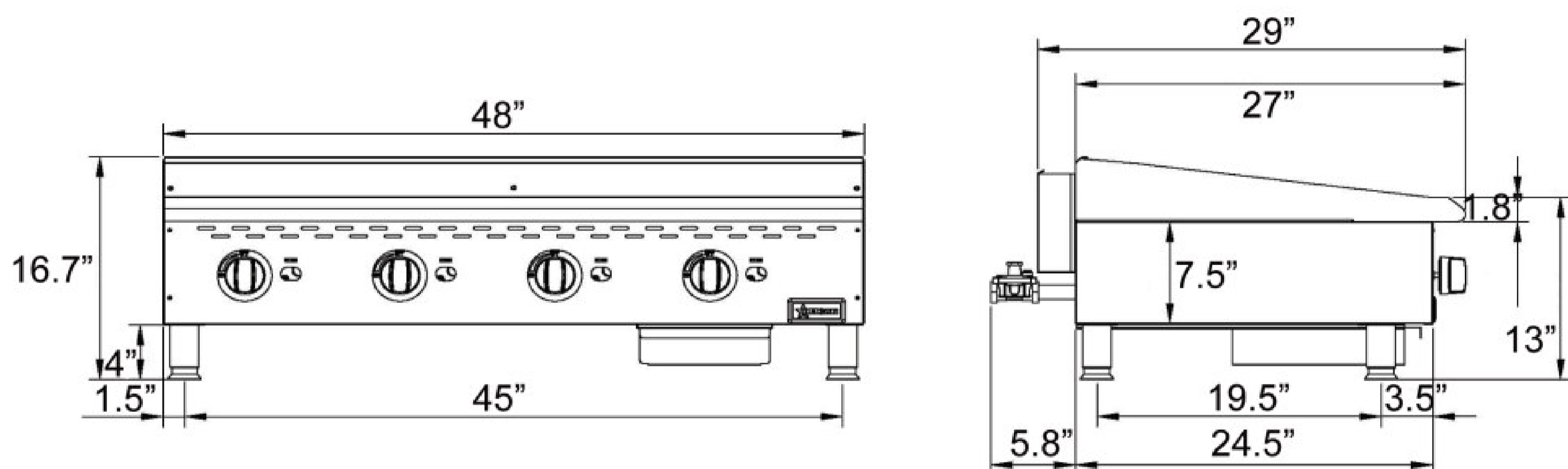


- Stainless steel construction and finish
- 3/4" thick polished steel and cooking surface
- Manually controlled independent cooking zones
- Large and robust dial controls
- Stainless steel burners
- Burner manual valves
- Removable full width waste tray
- Heavy-duty adjustable feet
- 3/4" rear gas connection
- Propane conversion kit (42971) included

SPECIFICATION

NUMBER OF BURNERS	4 BURNERS
B.T.U.	120,000
COOKING AREA (WD)	48" X 20" / 1220 X 510 MM
GAS TYPE	NATURAL GAS
TEMPERATURE CONTROL	MANUAL
DIMENSION (WDH)	48" X 32.7" X 16.7" / 1220 X 830 X 425 MM
PACKAGING DIMENSIONS (WDH)	50" X 32" X 18.5" / 1270 X 820 X 470 MM
WEIGHT	288 LBS/ 130.55 KG
PACKAGE WEIGHT	346.5 LBS/ 157.15 KG

TECHNICAL DRAWINGS WITH DETAILED DIMENSIONS



GAS CONVERSION TO BE COMPLETED BY AN APPROVED GAS FIELD TECHNICIAN



WWW.NELLAONLINE.COM
HELP@NELLAONLINE.COM

LOCATIONS

**148 NORFINCH DR
NORTH YORK, ON,
M3N 1X8
416-740-2424**

**433 QUEEN ST E.
TORONTO, ON,
M5A 1T5
416-847-1112**

**1164 ELLESMERE ROAD
SCARBOROUGH, ON,
M3N 1X8
416-292-0828**