



Electrolux

**Plug In
SpeedLight with flexible plate,
ribbed removable Teflon plate**

ITEM # _____

MODEL # _____

NAME # _____

SIS # _____

AIA # _____



Electrolux

SpeedLight with flexible plate, ribbed removable Teflon plate

Plug In



603874 (HSPP3RPFS)

SpeedLight with Flexible
Top smooth Contact Plate,
dark grey - US

Short Form Specification

Item No.

Lid, top plate, back cover and side panels constructed in 304 AISI stainless steel, bottom in AISI 430 stainless steel, external high-grade composite material paneling and handle. Self-adjusting upper plate adapting to food thickness or blockable in fixed position to avoid contact with food. Possibility to manually adjust the maximum movement of the upper plate. Smooth top contact plate 8 7/16" x 8 7/16" (215 x 215 mm) in aluminum with non-stick coating. Can accept snacks from 25/64" to 2 61/64" (10 to 75 mm) thick. Smooth 4 mm thick quartz glass bottom cooking surface 10" x 10" (250 x 250 mm). 2 probes independently control the temperature of the top and bottom plates from 212 to 536°F (100 to 250 °C). Automatic lid holding and lifting at the end of the cooking cycle via mechanical spring. Electronic control with digital 4,3" LED display, countdown display and buzzer at the end of the cycle. 800 W heating element on the top plate and 800 W electrical armored heating elements on the bottom plate. 2 x 1050 W magnetrons for microwaves. Front air inlet and back outlet for efficient cooling ventilation. Ergonomic handle in high-grade composite material for easy movement of the lid. Removable top front panel and dismountable top cooking plate for better cleanability.

8 preloaded programs (editable): P1 = 70 sec. (12 sec. MW) P2 = 80 sec. (12 sec. MW) P3 = 60 sec. (20 sec. MW) P4 = 75 sec. (20 sec. MW) P5 = 85 sec. (25 sec. MW) P6 = 85 sec. (18 sec. MW) P7 = 30 sec. (25 sec. MW) P8 = 12 sec. (no MW) With Top temperature = 249° C and bottom temperature = 220° C

Main Features

- It combines 3 cooking technologies: contact, infrared radiation and microwaves to provide perfectly cooked food, heated to the core.
- Self adjusting ribbed upper plate to heat food adapting to its thickness.
- The Energy Saving Mode automatically switches to stand-by after an amount of time settled by the operator (from 1 to 60 minutes).
- Delivered with USB port and wi-fi connection to optimize workflows allowing local and remote interaction (temperatures, countdowns, warnings).
- Electronic control with digital 4.3" LED display with adjustable brightness.
- Countdown display and buzzer with adjustable volume at the end of the cycle.
- Automatic mechanical lid holding and opening system controlled.
- IPX4 water resistance certification.
- Ergonomic handle for easy movement of the lid.
- ETL safety approved, complies with UL 923 and CAN/CSA 22.2 standards.
- ETL sanitation approved, complies with NSF/ANSI 4 standard.
- 8 pre-loaded programs (editable):
 - P1 = 70 sec. (12 sec. MW)
 - P2 = 80 sec. (12 sec. MW)
 - P3 = 60 sec. (20 sec. MW)
 - P4 = 75 sec. (20 sec. MW)
 - P5 = 85 sec. (25 sec. MW)
 - P6 = 85 sec. (18 sec. MW)
 - P7 = 30 sec. (25 sec. MW)
 - P8 = 12 sec. (no MW)
- With Top temperature = 249° C and bottom temperature = 220° C

Construction

- Smooth 4 mm thick quartz glass bottom cooking surface (250 x 250 mm).
- 2 temperature probes for an independent control of the top and bottom plate temperature.
- Independent temperature setting of the top and bottom plates from 100 to 250 °C.
- Automatic lifting of the lid at the end of the cooking cycle via mechanical spring.
- Lid, back cover and bottom all in AISI 304 S/S.
- Lid covers, handle and side panels in high-grade reinforced composite material.
- 800W heating element on the top plate.
- 800W electrical armored heating elements on the bottom plate.
- 2 x 1050W magnetrons for microwave.
- Front air inlet and back outlet for efficient cooling ventilation allows easy air filters removal and side by side installation.
- Included accessories: brush, spatula, scraper, 75mm-high stainless steel feet and degreasing liquid.
- Aluminum smooth contact plate 215 x 215 mm (8 7/16" x 8 7/16") treated with a special non-stick coating.

APPROVAL: _____

Included Accessories

- 1 of Glass saver for SpeedDelight PNC 653527
- 1 of Cleaning brush for SpeedDelight PNC 653623
- 1 of Spatula for SpeedDelight PNC 653625
- 1 of 4 stainless steel feet - Height = 76 mm for SpeedDelight PNC 653791
- 1 of SpeedDelight spacer stop kit for rear ventilation PNC 653794
- 1 of 1lt bottle of detergent grease for SpeedDelight PNC 653796

Optional Accessories

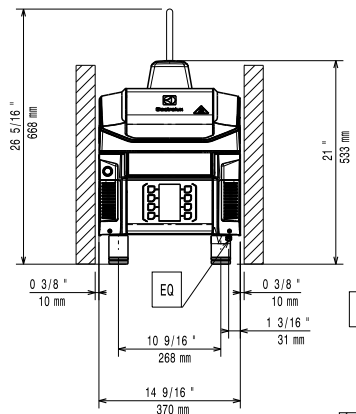
- Glass saver for SpeedDelight PNC 653527
☐
- Cleaning brush for SpeedDelight PNC 653623
☐
- 4x1lt detergent "rapid grease" - SpeedDelight PNC 653624
☐
- Spatula for SpeedDelight PNC 653625
☐
- Special scraper for SpeedDelight PNC 653690
☐
- Spray bottle (0,5lt) for detergent - SpeedDelight PNC 653695
☐
- Removable flat teflon plate for SpeedDelight PNC 653790
☐
- 4 rubber feet - Height = 26 mm for SpeedDelight PNC 653792
☐
- 4 rubber feet - Height = 40 mm for SpeedDelight PNC 653793
☐
- SpeedDelight spacer stop kit for rear ventilation PNC 653794
☐



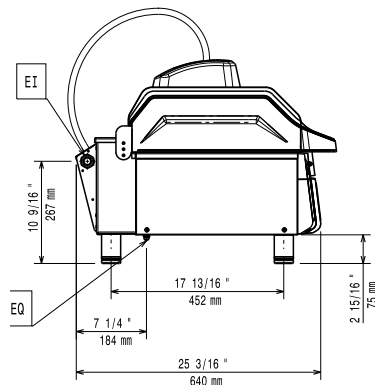
Electrolux

Plug In SpeedLight with flexible plate, ribbed removable Teflon plate

Front

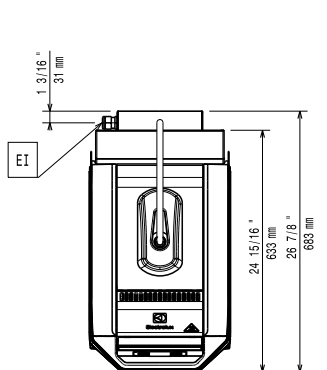


Side



EI = Electrical inlet (power)
EO = Electrical Outlet

Top



Electric

Supply voltage: 208 V/1 ph/60 Hz
Rated amps: 26 A
Total Watts: 5 kW

Installation:

Clearance: 190mm from rear vertical panel

Key Information:

External dimensions, Width: 361 mm
External dimensions, Height: 630 mm
External dimensions, Depth: 675 mm
Net weight: 36 kg
Shipping weight: 54 kg
Shipping height: 690 mm
Shipping width: 450 mm
Shipping depth: 780 mm
Shipping volume: 0.24 m³

Plug In
SpeedLight with flexible plate, ribbed removable Teflon plate

The company reserves the right to make modifications to the products without prior notice. All information correct at time of printing.

2018.02.22