



**JA4**

(Shown with optional stand)



**JA4SC**

## JET AIR OVEN (JA4 & JA4SC)

The JA Series from DOYON is known worldwide for its unique and patented JET AIR SYSTEM (the air moves in one direction for 2.5 minutes, stops for 25 seconds then moves the other way for 2.5 minutes) resulting in a gentle velocity air flow for exceptional baking results. This system will help you bake faster and more evenly without having to turn your pans at half of the baking time. (Ex: Competitors units will bake only one side or unevenly : muffins blow over, bakes only the outside, etc). Our competitors ovens allow the air to move in one direction only. DOYON ovens will bake better and your employees will continue preparations without worrying about turning pans.

DOYON's outstanding uniform steam injection system includes an electronic timer which will give you a precise mist everytime for a better quality product (crusty breads, bagels, french baguettes, etc.). This superior steam system will allow inexperienced employees to produce quality products with a minimum of training.

### VERSATILITY:

Bread, rolls, buns, crusty breads, pastries, muffins, cookies, cakes, pies, bagels, croissants, sours and ryes, pizzas, hamburgers, bacon, game hens, chicken, turkey, multimeal prep, bulk vegetables/casseroles, slow cook/retherm.

## JA4 & JA4SC

*"Simply the best  
bakery oven on  
today's market !"*

## Jet Air Oven 4 pans baking capacity

### OVEN FEATURING

- Countertop oven (JA4)
- Exclusive patented reversing fan system
- Outstanding steam injection system including an electronic timer
- Compact space saving unit
- High production oven (4 pans)
- Full view heat reflective thermos glass doors (single door available)
- Brightly lit
- Digital reminder timer
- Fully insulated, completely sealed
- Digital temperature controllers and timers
- Temperature up to a maximum of 500° F
- Energy efficient electric or gas heating (baking temperature reached in 15 minutes)
- Magnetic latches
- Door switch cut-off for fan blower
- Stainless steel inside and outside
- 3/4 HP motor
- Available gas (JA4SCG) or electric (JA4 & JA4SC)
- NSF & ETL listed
- One year parts and labor limited warranty

### OPTIONAL

- Stand with locking casters (JA4B)
- Programmable controls
- Water softener system
- Auto steam
- Delay switch (electric model only)
- Gas quick disconnect kit (4' flexible hose, ball valve and securing device)

*All Jet Air ovens can  
be used to cook meat*

## OVERALL DIMENSIONS

JA4	32 1/2" W X 40" D	X 31" H
	(826 mm X 1015 mm	X 787 mm)
JA4SC	32 1/2" W X 37" D	X 71" H
	(826 mm X 940 mm	X 1805 mm)
JA4SCG	32 1/2" W X 42 1/2" D	X 71" H
	(826 mm X 1080 mm	X 1805 mm)

## OVEN INTERIOR DIMENSIONS

JA4	27 1/2" W X 20" D	X 17 1/2" H
	(699 mm X 508 mm	X 445 mm)
JA4SC	27 1/2" W X 20" D	X 17 1/2" H
	(699 mm X 508 mm	X 445 mm)
JA4SCG	27 1/2" W X 19" D	X 17 1/2" H
	(699 mm X 483 mm	X 445 mm)

Shelf spacing 3 1/2" (89 mm)

## GAS SYSTEM (JA4SCG - Propane or natural)

BTU total: 52 000

120V - 1 PH - 10 A - 1.2 kW - 2 wires - 60 Hz  
NEMA 5-15P

Gas Inlet : 1/2" NPT

Draft hood : 6" (152 mm)

Recommended gas pressure:

Propane gas : 11" W.C.

Natural gas : 7" W.C.

## ELECTRICAL SYSTEM (JA4 & JA4SC)

3 phases:

120/208V - 22A - 8 kW - 4 wires - 60 Hz

1 phase:

120/240V - 34A - 8 kW - 3 wires - 60 Hz

220V - 32A - 7 kW - 2 wires - 50 Hz

## Other voltages available

Water Inlet : 1/4" NPT

## OVEN CAPACITY

### TOTAL

Standard sheet pans 18" X 26" (46 cm X 66 cm):

Four-strapped bread pans (up to 8 1/2" long):

9" (23 cm) pies:

4 pans

16 loaves

24 pies

## FINISH

Stainless steel

## SHIPPING INFORMATION

425 lb (193 kg) approximately (JA4)

650 lb (295 kg) approximately (JA4SC)

750 lb (341 kg) approximately (JA4SCG)

Electrical service connection and water inlet are located at the back of the unit.

Specifications and design subject to change without notice.

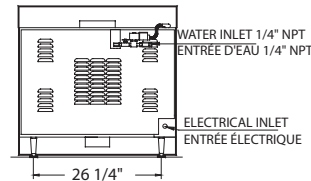
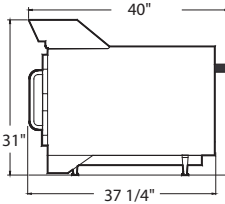
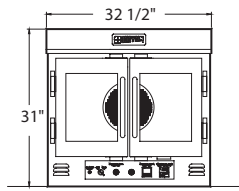


1255, rue Principale  
Linière, Beauce, Québec, Canada G0M 1J0

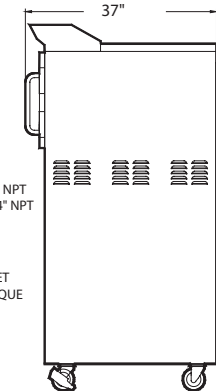
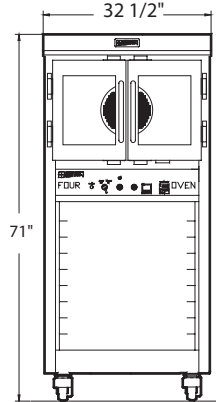
Telephone.: 418-685-3431  
Canada: 1-800-463-1636  
E-mail : doyon@doyon.qc.ca

Fax: 418-685-3948  
U.S.: 1-800-463-4273  
Internet : http://www.doyon.qc.ca

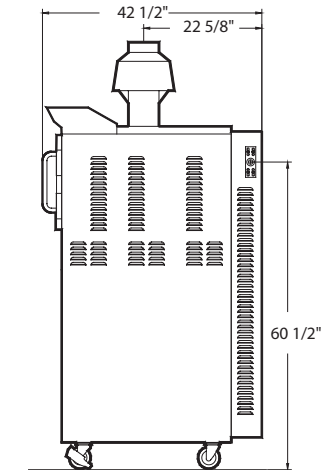
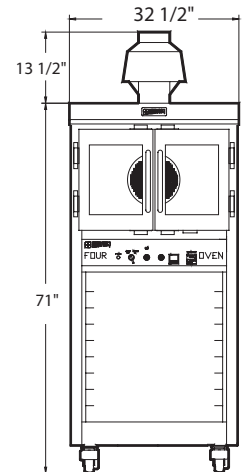
JA4



JA4SC

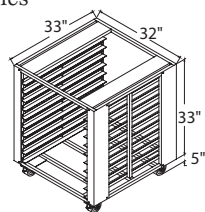


JA4SCG

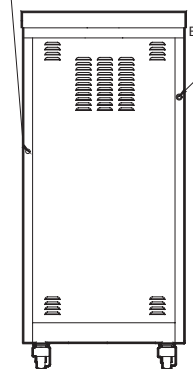


6" (15.2 cm) DRAFT HOOD  
COUPE TIRAGE 6" (15.2 cm)

JA4B



ELECTRICAL INLET  
ENTRÉE ÉLECTRIQUE



GAS INLET 1/2" NPT  
ENTRÉE DE GAZ 1/2" NPT

WATER INLET 1/4" NPT  
ENTRÉE D'EAU 1/4" NPT

ELECTRICAL INLET  
ENTRÉE ÉLECTRIQUE

WATER INLET 1/4" NPT  
ENTRÉE D'EAU 1/4" NPT

Your local distributor:

