

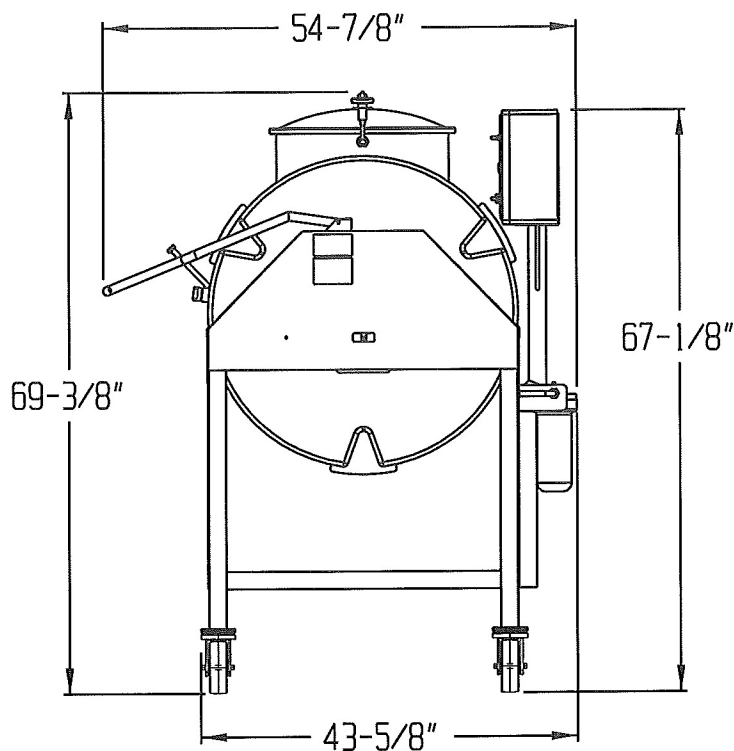
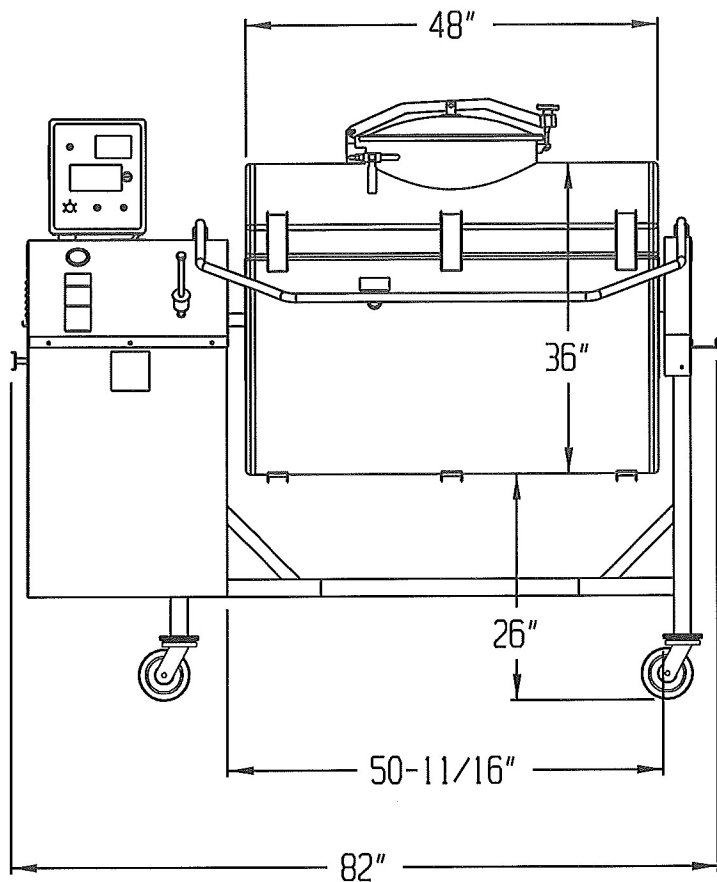
DVTS 1000 DIRECT DRIVE TUMBLER



If you're looking for a quality tumbler that can handle the big loads you found it! The DVTS 1000 Direct Drive Tumbler has variable speed control 4-12.2 rpm. Easy to clean. Safety bar and safety switch. Touch Screen Timer with hours, minutes and batch counting. Forward and reverse tumbling. With the variable speed control you can rotate the tank to where you want it for loading, unloading and cleaning. Two vacuum filters. Liquid filled vacuum gauge. Drain plug. Gain profits by tumbling, weight gain and tenderizing all in minutes.

DANIELS FOOD EQUIPMENT

DVTS 1000 DD TUMBLER



SPECIFICATIONS

TOTAL POWER INPUT:	STANDARD; 208/230 VOLT, 15.6 AMP, 3 PHASE 60 HZ
TUMBLER DRIVE:	VARIABLE SPEED 4-12.2 RPM, FWD/OFF/REV
DRIVE MOTOR:	3 HP
VACUUM PUMP:	¼ HP
TOUCH SCREEN TIMER:	HOURS, MINUTES, BATCH COUNTING
ELECTRONIC CONTROLS:	TUMBLER SPEED-ADJUSTABLE 4-12.2 RPM. "JOG"- "RUN" TOGGLE SWITCH, FWD/OFF/REV TOGGLE SWITCH, TUMBLER "START"- "STOP" TOGGLE SWITCH, VACUUM PUMP "START"- "STOP" TOGGLE SWITCH
MAXIMUM CAPACITY:	1400-LBS.
WEIGHT:	951-LBS. (NET)
SHIPPING WEIGHT:	APPROXIMATELY 1,100 LBS.

MMYB Inc. dba

DANIELS FOOD EQUIPMENT

310 NORTH CLAYBORN AVE. PARKERS PRAIRIE, MN. 56361 PHONE: (218) 338-5000 FAX (218) 338-5909.

WEB: www.danielsfood.com

E-MAIL: danielsfood@midwestinfo.net

7/19/2016