

3-HP FLOOR BAND SAW

**CUT SLABS OF MEAT
QUICKLY, EASILY, AND
PRECISELY**

FEATURES

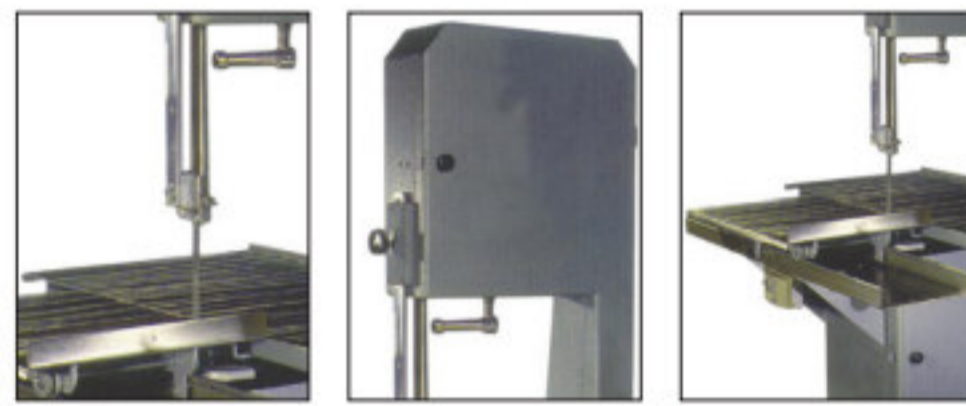
- STAINLESS STEEL FINISH WITH ELECTROSTATIC OVEN PAINT
- PERFECT FOR BUTCHER SHOPS AND GROCERIES
- EASY ACCESSIBILITY FOR OPERATION, DISASSEMBLY, AND CLEANING

Fabricated in steel with electrostatic oven paint, complete with an aluminum head. Its stainless steel table has a four-wheel base that slides on rails. Equipped with adjustable legs. Easy to disassemble for quick cleaning and maintenance.

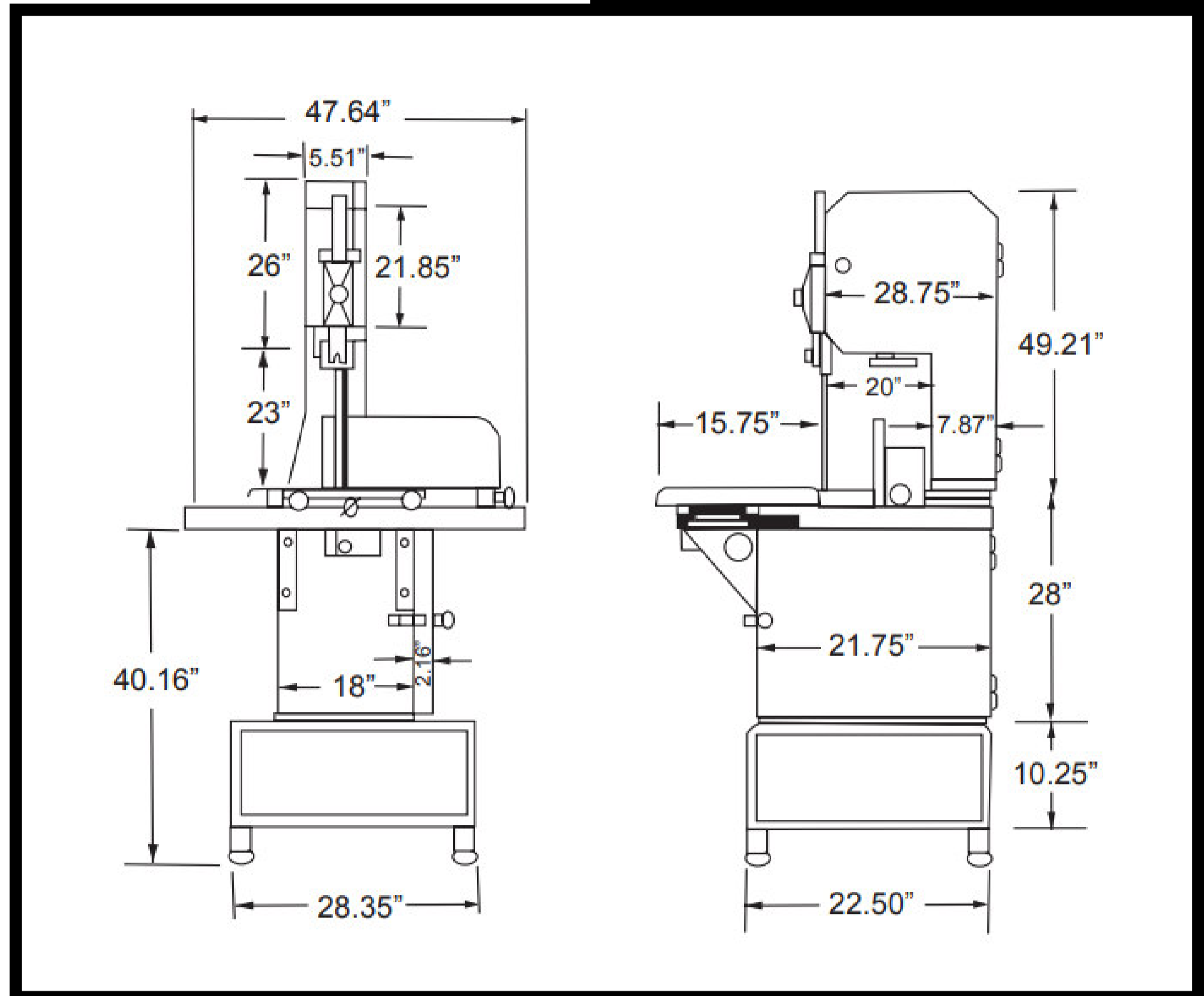


**1 YEAR
WARRANTY**
PARTS AND LABOUR

3-HP FLOOR BAND SAW



TECHNICAL DRAWINGS WITH DETAILED DIMENSIONS



SPECIFICATION

ELECTRICAL
AMP
POWER
CUTTING CAPACITY
BLADE LENGTH
BLADE SAW DIMENSIONS
WEIGHT
PACKAGING WEIGHT
PACKAGING DIMENSIONS

220V / 60 HZ / 1 PH	220V / 60 HZ / 3 PH
11A	9A
126" / 3200 MM	
15" X 18" / 381 X 457 MM	
126" / 3200 MM	
0.78" X 12.60" / 20 X 320 MM	
374 LBS. / 170 KG.	
415 LBS. / 188 KG	
40" X 54" X 96" / 1016 X 1372 X 2438 MM	



WWW.NELLAONLINE.COM
 HELP@NELLAONLINE.COM

LOCATIONS

148 NORFINCH DR
 NORTH YORK, ON,
 M3N 1X8
 416-740-2424

433 QUEEN ST E.
 TORONTO, ON,
 M5A 1T5
 416-847-1112

1164 ELLESMERE ROAD
 SCARBOROUGH, ON,
 M3N 1X8
 416-292-0828