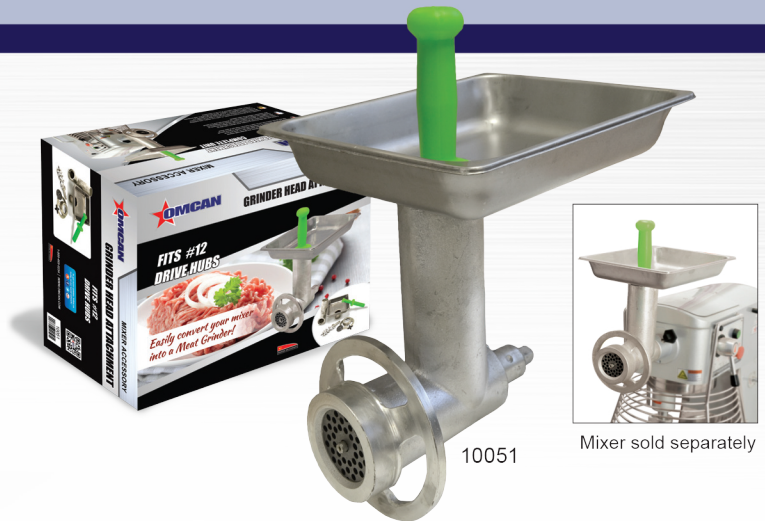


SERVING THE FOOD INDUSTRY SINCE 1951

MIXER ACCESSORIES AND ATTACHMENTS

GRINDER HEAD ATTACHMENT FOR MIXERS

With available units compatible for #12 and #22 drive hubs. Complete with a cast iron worm, ring, and cylinder, this grinder head ensures durability and efficiency, while its stainless steel feed pan, 1/4" plate and meat stomper allows for easy cleaning. With available units compatible with any number 12 take-off hub, this grinder attachment can be used to make the most out of your mixer. Also available in stainless steel.



Mixer sold separately

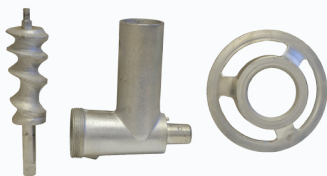


ITEM	DESCRIPTION	PACKAGING WEIGHT
*10051	#12 Grinder Head Complete Unit - Fit # 12 drive hubs	20 lbs./ 9 kgs.
27142	#12 Grinder Head Complete Unit - Stainless Steel - Fit # 12 drive hubs	22 lbs./ 10 kgs.
10058	#22 Grinder Head Complete Unit - Fit # 22 drive hubs	26 lbs./ 11.8 kgs.
21229	#12 Grinder Head Complete Unit - Stainless Steel - Fit # 12 drive hubs	28 lbs./ 12.7 kgs.



#12 Grinder Head Complete Unit (Item: 10051)

- Cast iron worm
- Ring
- Cylinder
- Feed pan
- #12 Machine plate
- #12 Machine knife
- Meat stomper



Item 10054
Grinder Head Package - Cylinder (10052), Ring (10053), Worm (10055)
 Gross Weight: 12 lbs.



Item 10056
Grinder Head Stomper
 Gross Weight: 1 lbs.

Item 10057
Grinder Head - 10" x 12" Feed Pan
 Gross Weight: 3 lbs.



Item 10052
Grinder Head Cylinder
 Gross Weight: 6 lbs.



Item 10053
Grinder Head Ring
 Gross Weight: 4 lbs.



Item 10055
Grinder Head Worm
 Gross Weight: 2 lbs.



Follow us to keep up to date with the latest news and offers



HOBART COMPATIBLE ATTACHMENTS & MIXER BOWLS

A reliable mixer attachment is not only help to improve your work performance, but also enhance productivity and efficiency in your kitchen. Our universal attachments and stainless steel mixer bowls are available in various sizes to meet your needs.

Hobart Compatible Attachments



Whip



Flat Beater



Dough Hook

(Picture is based on 20 Qt Accessories. Product may not be exactly as shown.)

ITEM	DESCRIPTION	GROSS WEIGHT
10097	20 QT Flat Beater Attachment	3 lbs./ 1.4 kgs.
10098	30 QT Flat Beater Attachment	5 lbs./ 2.3 kgs.
17606	60 QT Flat Beater Attachment	7 lbs./ 3.2 kgs.
17609	80 QT Flat Beater Attachment	10 lbs./ 4.5 kgs.
17612	140 QT Flat Beater Attachment	25 lbs./ 11 kgs.
10078	20 QT Dough Hook Attachment	4 lbs./ 2 kgs.
10079	30 QT Dough Hook Attachment	6 lbs./ 2.7 kgs.
17607	60 QT Dough Hook Attachment	10 lbs./ 4.5 kgs.
17610	80 QT Dough Hook Attachment	17 lbs./ 7.7 kgs.
17613	140 QT Dough Hook Attachment	25 lbs./ 11 kgs.
10237	20 QT Whip Attachment	4 lbs./ 2 kgs.
10238	30 QT Whip Attachment	6 lbs./ 2.7 kgs.
17605	60 QT Whip Attachment	8 lbs./ 3.6 kgs.
17608	80 QT Whip Attachment	10 lbs./ 4.5 kgs.
17611	160 QT Whip Attachment	19 lbs./ 8.6 kgs.

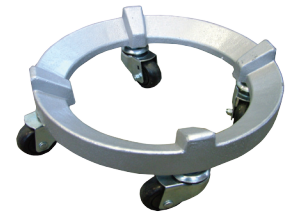
Stainless Steel Mixer Bowls



ITEM	DESCRIPTION	GROSS WEIGHT	DIMENSIONS (Dia x H)
14246	20 QT Stainless Steel Mixer Bowl	12 lbs./ 5.4 kgs.	14" x 11"/ 356 x 279 mm
23509	20 QT Stainless Steel Mixer Bowl Light Gauge	12 lbs./ 5.4 kgs.	14" x 11"/ 356 x 279 mm
14247	30 QT Stainless Steel Mixer Bowl	18 lbs./ 8 kgs.	15.5" x 13.25"/ 394 x 336.6 mm
14248	60 QT Stainless Steel Mixer Bowl	28 lbs./ 12.7 kgs.	19.25" x 16.75"/ 489 x 425.5 mm
14249	80 QT Stainless Steel Mixer Bowl	34 lbs./ 15.4 kgs.	21.5" x 18.5"/ 546 x 470 mm
18266	140 QT Stainless Steel Mixer Bowl	72 lbs./ 32.6 kgs.	25" x 26"/ 635 x 660 mm

Bowl Dolly

Steel-painted bowl dolly provides easy mobility for you perfectly mixed ingredients.



ITEM	DESCRIPTION	GROSS WEIGHT	DIMENSIONS (Dia x H)
23512	Bowl Dolly, steel-painted, fits 30 -140 QT bowls	30 lbs./ 13.6 kgs.	16.5" x 7.25"/ 419 x 184 mm

Hobart compatible universal attachments and mixer bowls are not suitable for Omcan n 20441/ 17835/ 20442 /17836/ 19999 and Legacy Series mixers