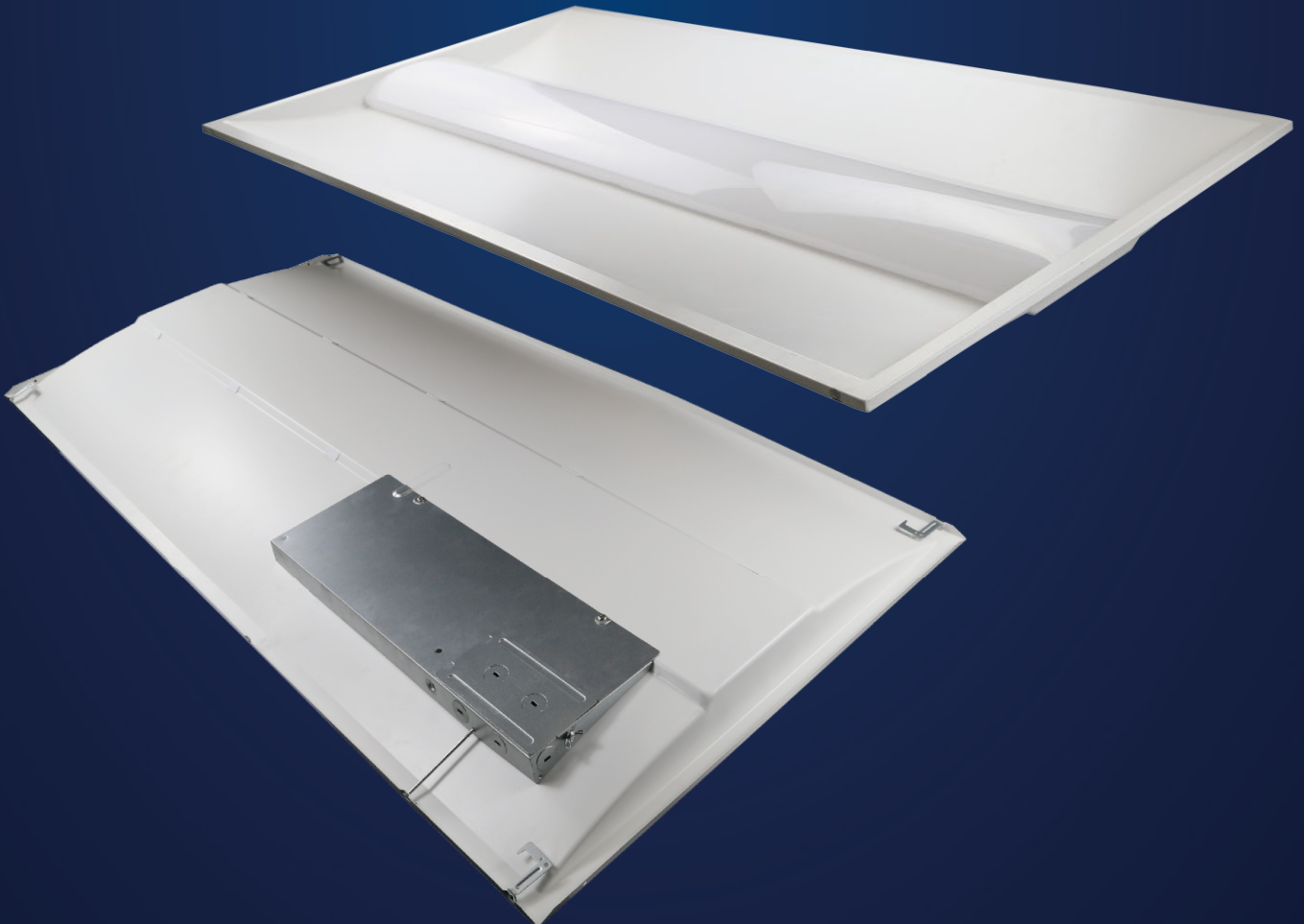


WATT & CCT SELECTABLE LED TROFFER

- 3CCTs/3 Watts Optional.
- 0-10V Dimming, Flicker Free.
- Thickness is only 50mm(1.95"), save 30% more space to ship.
- UGR<22, ETL DLC 5.1 .



LED Troffer for Hospital



WATT & CCT SELECTABLE LED TROFFER



Dimmable



3500K-4000K-5000K or 4000K-5000K-6500K



50,000 H



BEAM ANGLE 110°

Item Number	Wattage (W)	Size (inch)	CCT (Kelvin)	Luminous flux (lm)	CRI (Ra)	UGR	Beam Angle (Degree)	Pack Qty (Pcs)	Dimming
120-277V									
DYU-TRO26640-DX-TZZ-Y0W-30W-40W	20/30/40	23.7*23.7*1.95 (2*2')	4000K-5000K-6500K/3500K-4000K-5000K	5000	>80	<22	> 110°	2	0-10V
DYU-TRO261250DX-TZZ-Y30W-40W-50W	30/40/50	47.7*23.7*1.95 (2*4')	4000K-5000K-6500K/3500K-4000K-5000K	6250	>80	<22	> 110°	2	0-10V
DYU-TRO231240-DX-TZZ-Z0W-30W-40W	20/30/40	47.7*11.9*1.88 (1*4')	4000K-5000K-6500K/3500K-4000K-5000K	5000	>80	<22	> 110°	2	0-10V
DYU-TRO261272-DX-TZZ-50W-60W-72W	50/60/72	47.7*23.7*1.95 (2*4')	4000K-5000K-6500K/3500K-4000K-5000K	9000	>80	<22	> 110°	2	0-10V

* For more technical information, please contact our sales representative.

Item Number: DYU-TRO26640-DX-TZZ-Y					
Wattage (W)	CCT (Kelvin)	flux (lm)	Wattage (W)	CCT (Kelvin)	flux (lm)
20W	3500K	2500	30W	3500K	3750
	4000K	2700		4000K	4050
	5000K	2500		5000K	3750
40W	4000K	5400	40W	4000K	5400
	5000K	5000		5000K	5000

Item Number: DYU-TRO261250-DX-TZZ-Y					
Wattage (W)	CCT (Kelvin)	flux (lm)	Wattage (W)	CCT (Kelvin)	flux (lm)
30W	3500K	3750	40W	3500K	5000
	4000K	4050		4000K	5400
	5000K	3750		5000K	5000
50W	4000K	6750	50W	4000K	6750
	5000K	6250		5000K	6250

Item Number: DYU-TRO231240-DX-TZZ-Y					
Wattage (W)	CCT (Kelvin)	flux (lm)	Wattage (W)	CCT (Kelvin)	flux (lm)
20W	3500K	2500	30W	3500K	3750
	4000K	2700		4000K	4050
	5000K	2500		5000K	3750
40W	4000K	5400	40W	4000K	5400
	5000K	5000		5000K	5000

Item Number: DYU-TRO261272-DX-TZZ-Y					
Wattage (W)	CCT (Kelvin)	flux (lm)	Wattage (W)	CCT (Kelvin)	flux (lm)
50W	3500K	6250	60W	3500K	7500
	4000K	6450		4000K	7700
	5000K	6250		5000K	7500
72W	4000K	9200	72W	4000K	9200
	5000K	9000		5000K	9000

Model Instructions

DYU-TRO26640-DX-TZZ-Y

Company Code	Category	series	Size	Wattage	Dimming	Sensor	CCT Options	CCT	Version
DYU	TRO	2	66/612/312	40/50/72	D	X	T	ZZ	Y
	TRO= Troffer	2= the 2 nd Generation	66=603mm*603mm =23.7inch*23.7inch 612=1212mm*603mm =47.7inch*23.7inch 312= 1212mm*303mm =47.7inch*11.9inch	40=20W-30W-40W 50=30W-40W-50W 72=50W-60W-72W	D=Dimming	F=Sensor N=No Sensor	T=3 CCTs Options	ZZ=3500K-4000K-5000K 65=4000K-5000K-6500K	It can be A, B, C, D

* All data are related to the entire product

Due to the special conditions of the manufacturing processes of LED, the typical data of technical parameters can only reflect statistical data and do not necessarily correspond to the actual parameters of each single product which could differ from the typical value.

For technical information of other CCT, please contact our sales representative.

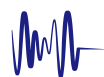
Electrical and Photometric Characteristics



Nominal Voltage
120V-277V



IP Rating
IP20



Power Factor
>0.9



Dimmable



CRI
>80



Starting Time
<1.0 s



Lumen Maintenance
50,000Hours



Operating Temp.
-20°C ~ +45°C

*Data is based upon tests performed in a controlled environment. Actual performance can vary depending on operating conditions. All products are subject to change or may be discontinued any time without notice.
*Not all products are qualified on the DLC QPL. To view our DLC qualified products, please consult the DLC Qualified Products List at www.designlights.org/search.



LED Troffer for Office

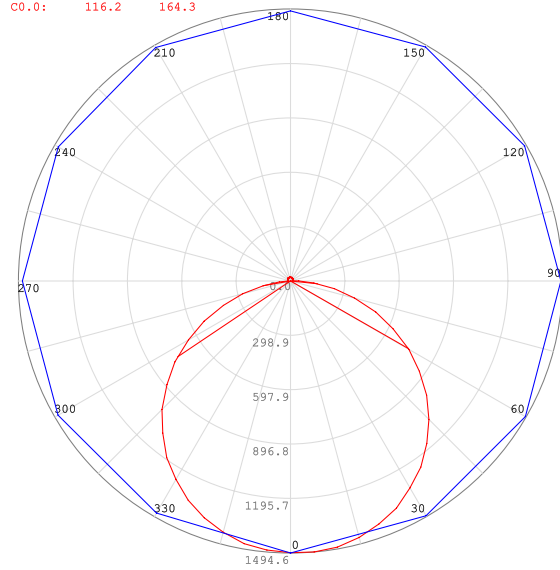


Luminous Intensity Distribution Diagram

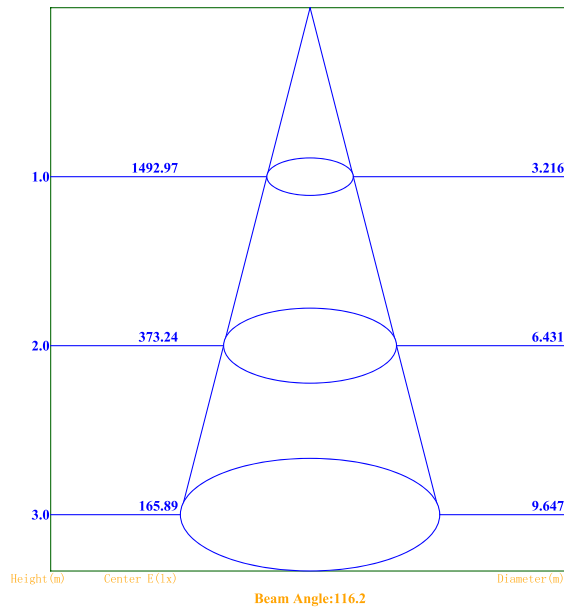


603X603Troffer 40WIES

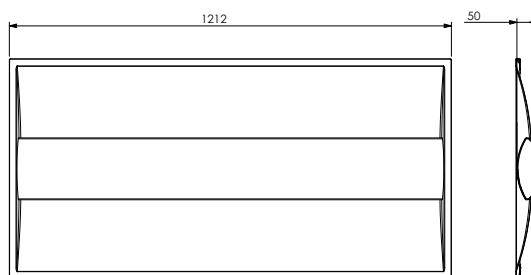
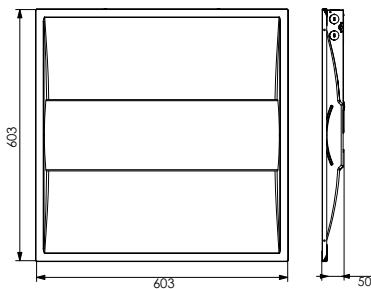
Plane [50%Ang.] [10%Ang.] Polar Graph
 CO.0: 116.2 164.3



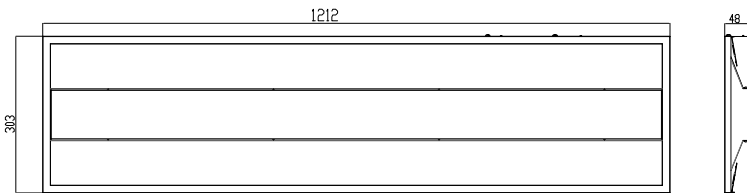
C Plane: CO.0
 y Cone: y5.0



Dimension Diagram



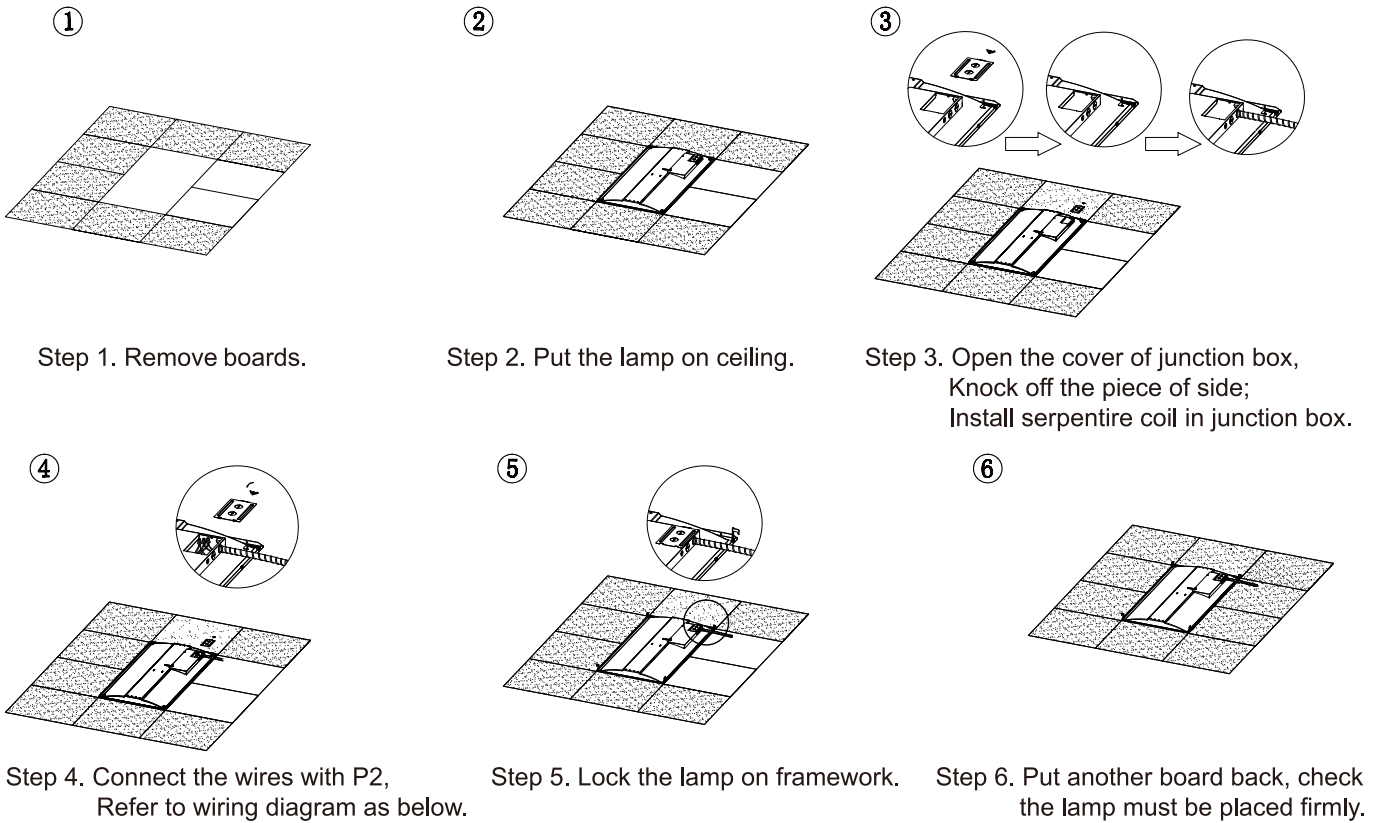
LED Troffer for Corridor



Item Number	L (inch)	W (inch)	H (inch)
2ft*2ft	23.7	23.7	1.95
2ft*4ft	47.7	23.7	1.95
1ft*4ft	47.7	11.9	1.88

Installation Diagram

Please read the instructions carefully before installation



Power&CCT Adjustable



CCT changeable
 Left-3500K; Middle-4000K; Right-5000K
PS: The defaults switch setting is set to 4000K on the fixture.

Wattage changeable
 2X2: Left-20W; Middle-30W; Right-40W
 2X4: Left-30W; Middle-40W; Right-50W
PS: The defaults switch setting is set to 40W(2X2) / 50W(2X4) on the fixture.

Wiring Diagram

