

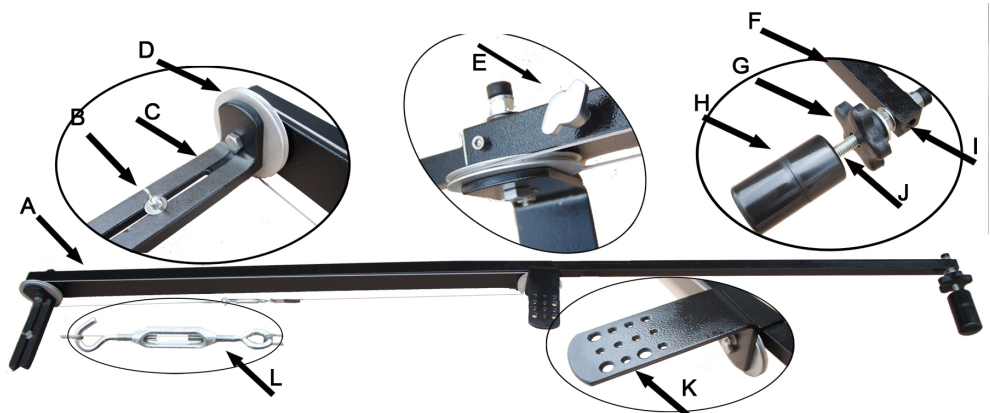
BackPacker + Extension

CCBPX
Installation Guide
2015



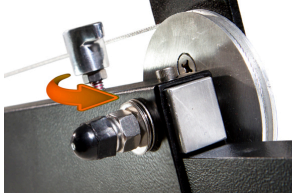
BackPacker Installation Guide

- A BackPacker Chassis
- B Camera Screw
- C Camera Bracket
- D Pulley
- E Weight bar knob
- F Weight Bar
- G Weight knob
- H Weight handle
- I Alternate weight screw hole
- J Tripod screw
- K Tripod Bracket
- L Turnbuckle



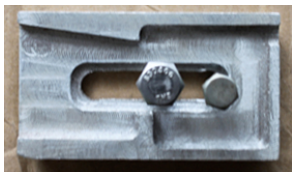
***If using the Extension Bar, first complete steps 1X-2X on page 3**

Step 1 - Release Weight Bar



Carefully unpack the BackPacker. Do not lift, push, pull, or carry by the wire. Loosen the bottom Weight Bar Knob, thus allowing the Weight Bar to be gently pulled from the chassis. Slide the bar out of the chassis until it stops. Retighten the Knob back down securing the camera bar and the weight bar into the chassis at its longest length.

Step 2 - Mount your release plate to Tripod Bracket



The BackPacker's tripod bracket has a number of bolt holes for connecting to your tripod's release plate. Whenever possible, use the thickest available bolts. Remove the release plate from the tripod head, secure two screws from the release plate through the plate and onto the Tripod Bracket. (Release plates are NOT included. You must use the release plate that came with your tripod, or purchase an optional plate. Most tripods have their own, unique plate. We do sell a version compatible with Manfrotto 50x and Benro KH25.)

Step 3 - Mount on Tripod



Make sure your tripod is going to be able to hold the weight of the camera, crane, weights and other devices you will have mounted. Slide the release plate now connected to the crane into the tripod head. Tighten the release plate tightening knob that secures the plate into the tripod head. Make sure the plate is held in securely, so the crane will not slip out. Test by tilting the head all the way forward and back.



Step 4 - Mount Camera

Remove thumb screw from Camera Mount Bracket. Save the washers and the wingnut for later. Insert thumb screw into camera's tripod mount hole with one of the washers, just a little so that there is space between the washer and the camera. Slide camera into the camera bracket. Carefully tighten thumb screw so camera will not move on bracket. Set this end of the crane on a nearby chair or table.

Step 5 - Mount Weights (Approximately 2 - 2.5x camera weight)



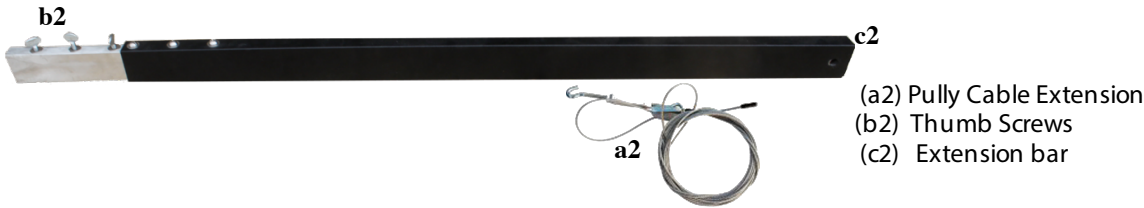
Add some weights to the Weight bolt, until the camera just raises up off the table. Use the washer and nut to hold weights safely. Run the star knob against weight to lock it on. You can adjust the length of the weight bar, by loosening the Weight Bar Wing Nut, and sliding the weight bar forward and back until you get the unit balanced. ** Optionally, Figure 7, there is a threaded hole at the bottom of the weight bar, which would allow you to screw the weight bolt, star nut and handle into the Weight Bar, thus allowing you to push the weight further back which allows you to use a bit less weight to counter your DSLR.

Step 6 - Install Optional cables for remote and external video



If using wired remote control and/or external video, you should add your optional remote control extension and video extension output cables at this time. Use tape or tiewraps to secure the cable to the Camera Bar and Chassis and connect to controller and or video monitor. Avoid loose cables. Make sure the cable is free from wire cable and pulley, and does not prevent free boom, sweep and tilt motion. SteadyTracker Company offers a variety of extension cables for your remote control and for your video and audio monitoring

Extension Kit Installation Guide 2015



Setup instructions

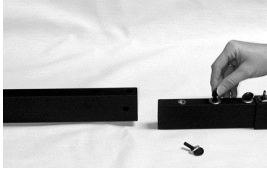
Step 1X Add Extension



Remove plastic ends from both sides of the extension.

Remove all thumb screws (b2) from both sides of the extension and then slide extension into ends of CobraCrane2X steel bars. Replace the Thumb screws.

***Tighten carefully. Do not over-tighten.**



Step 2X Attach Pulley Cable



Attach pulley cable (a2) around pulleys.

When tightening the cable. Open the turnbuckles most of the way. Do not let them come apart. When the cable is on the pulley, tighten the cable at the wire clamp first, then use the turnbuckle to do micro adjustment. To loosen, tighten or reposition the wire clamp, Loosen the thumb screw, pull the wire loop end of the cable, then retighten the Thumb Screw. Always keep the cable terminator against the clamping cylinder. This allows you to easily adjust the loop of the cable without concerning yourself with the end of the cable.



Now you can turn the turnbuckle to tighten the cable for your requirements. You want the cables as tight as a guitar string, just taut and straight. This allows very smooth tilts.

Using the BackPacker

Still shooting - Photos

For shooting still photos, we recommend you purchase a remote monitor and shutter controller for your camera. Most BackPacker dealers also offer remote controls for focus and shutter release. We offer a 6 or 12 foot extension cable for those purchasing wired remote controls. An optional monitor is an excellent method for remote framing of your stills before releasing the shutter. Without the remote, you will have to press your shutter button manually, which may be a challenge when the camera is at the high end of the crane's arc, plus it will cause the crane to move. Either way, Change from viewfinder to Live View so you can see the image either on your camera's LCD or on the optional external monitor. Once the desired framing is set, simply press the shutter release on the remote control to expose.

Shooting video

There are three basic moves of the BackPacker when shooting video with your camera. These moves done in combination will meet virtually any shooting requirement. The moves are Boom, Swing and Tilt. A boom is when you change the elevation of the camera. This is done to offer shots that show vertical up and down movement. A swing, which happens when you move the crane left to right or right to left, is done to show a panoramic landscape or following talent as they move by the crane. Finally a tilt is done to tilt the camera relative to the boom.



Booming

To boom the crane, stand behind or to the side and simply lift the weight bar to lower the camera. Lower the weight bar to increase the height of the camera. If your tripod's tilt is locked or you hold the tilt handle stationary while booming, the camera will remain framed on the subject depending on how far away from the focal point the camera is. To keep exactly framed, hold the tilt handle and make minor adjustments as you are booming the crane. This move will allow you to show talent from various height perspectives. With the tilt free, so that the camera tilts with the boom, you can boom the crane and camera moves with the boom.

Some Boom moves to practice.

Boom from high to low.

Station the crane so that the camera is in a high position.

Slowly raise the weight bar as you hold the tilt handle stationary. This will allow you to keep the talent in frame.

Boom from low to high.

Station the crane so that the camera is in a low position.

Slowly lower the weight bar as you hold the tilt handle stationary. This will allow you to keep the talent in frame.

Boom from high to low. Showing high to low

Station the crane so that the camera is in a high position.

Loosen drag on tilt to least drag, so that it tilts with the boom movement. Raise weight bar slowly, allowing you to see talent head to toe.

Boom from low to high. Showing low to high

Station the crane so that the camera is in a low position.

Loosen drag on tilt to least drag, so that it tilts with the boom movement. Lower weight bar slowly, allowing you to see talent toe to head.

Boom with low perspective Showing how big someone is

Station the crane so that the camera is in a low position

Position camera very close to talents legs, Tilt camera, pointing up lower the weight bar slowly, keeping camera tilted up

Boom High to Low See a coin, pick it up

Station the crane so that the camera is in a high position.

Set camera angle for almost straight ahead,

Tilt camera down framing coin in center of camera

Slowly raise the weight bar, keeping the coin in center of the frame

Swinging

A Swing move is used to get a Panoramic shot, ideal for an opening or title sequence. Also used to follow talent as they go by. Swinging the BackPacker is very simple. Loosen the Panning drag on your tripod, and then simply move the weight bar left to right, or right to left.



Here are some swinging moves to practice:

- Panoramic Swing** Station Crane so that the arms are parallel to the ground
Swing right to left (or left to right). Initially point camera all the way to end of the image
- Dogs point of view** Boom the camera low. Tilt camera up. Now perform swing move
- Periscope** Boom the camera high. Tilt camera down, slowly swing crane

NOTE: Be careful of hitting the tripod with the weights or end of crane. Practice!!

Slider Move

Set camera out of frame to the left or right of the subject. Lock tripod head tilt, loosen pan. Very slowly swing the crane bringing subject into frame and then continue until subject drops back out of frame. Slow and steady. Practice this shot shooting names on signs.

Tilting: Dynamic Tilting



Tilting the camera relative to the Boom offers some interesting shots. Usually used in combination with other moves, Tilting can also be used on its own. Loosen the tilt drag on your tripod head. To tilt the camera, hold the weight bar in one hand and tilt the Pan/tilt handle on the tripod with the other hand. This allows you to change the tilt without changing the boom.



Shoot from above Station the crane so that the arms are parallel to the ground. While holding the weight bar, push the pan/tilt handle up, this will tilt the camera down. This move allows you to shoot something like a face, then Slowly tilt down, showing the rest of the body

Tilt up from below

Station the crane so that the camera is low to ground pointing forward. While holding the weight bar, push the pan/tilt handle down. This will tilt the camera up. This move allows you to shoot something like a shoe, then slowly tilt up, showing the rest of the body. Ideal for showing how big something is, like a tree.

Tilting straight down

Position crane about 45 degree angle. Point camera down. This allows you to get shots from above. For example, looking in the moon roof of a car. Showing food or products from above shooting straight down. This is one of the best methods to get the top down shot of a wedding cake.

Tilting: Static Tilting

Used to keep camera pointed at the subject (or in any angle), while booming the crane. Lock down the Tilt Drag control by tightening down the tilt drag control of the Tripod. Now Boom. While the drag is locked down, the camera will stay pointed in the same direction, throughout the arc of the Boom.



Practice makes perfect. Use a combination of these moves to create beautiful cinematic content of your own. Watch cool movies and TV shows to see how some of the experts do these moves and then adjust to your liking.

Have fun – and be creative.

The SteadyTracker Company

Orange County, California

www.CobraCrane.com

Getting Started

The SteadyTracker is shipped from the factory in the most appropriate packaging available. Please inspect the contents of the package and make sure to call or email us directly if there is any shipping damage or missing components. We can be reached at 949-510-7249. Our email is info@steadytracker.com. Please store all original containers. The SteadyTracker Company will not take responsibility for any products shipped to us without original shipping material. Please make sure to keep the packaging safe for future use.

The Conditions of The Warranty are as Follows:

The SteadyTracker Company reserves the right to determine if a repair is subject to the warranty agreement. Damage caused by products being dropped or mishandled is not covered by the warranty. Suitable packaging may be purchased from The SteadyTracker Company at a nominal cost. All products are to be shipped prepaid to The SteadyTracker Company. For insurance reasons, The SteadyTracker Company cannot accept any product that is returned via the U.S. Postal Service. Returns will be accepted from UPS, Federal Express, or a comparable freight carrier. The SteadyTracker Company will return the repaired product via a like carrier, in the continental United States, only if the product is under warranty and subsequently found to be faulty. Out-of-warranty repaired products are shipped at the customer's expense. Turnaround time for warranty repairs will not exceed 4 days (not including shipping time), unless extraordinary fault conditions exist. For our international customers, please coordinate with your dealer for repairs.

Limited Warranty:

Labor and defects are covered for one (1) year from the original date of purchase. Only the original purchaser of the product is covered under this warranty. The warranty is not transferable. If you discover a defect, please refer to our Return Merchandise Authority Policy. The Warranty covers all SteadyTracker hardware defective in materials or workmanship. During this warranty period, The SteadyTracker Company, at its option, will repair or replace product or product components, which in its opinion prove defective. Parts and components used in the repair process may be recycled or repaired, at The SteadyTracker Company's discretion. This warranty service will be performed at no charge to the registered owner, provided the product is shipped prepaid to The SteadyTracker Company in the original packaging. The SteadyTracker Company reserves the right to determine whether a needed repair is subject to the warranty as per its provisions stated herein. Transit damage caused by inadequate packing invalidates this warranty. This warranty will be void if, in the opinion of The SteadyTracker Company, the product in question has been damaged through accident, misuse, misapplication, or as a result of service or modification performed not authorized in writing by The SteadyTracker Company.

REPAIR OR REPLACEMENT AS PROVIDED UNDER THIS WARRANTY IS THE EXCLUSIVE REMEDY FOR THE CONSUMER. THE STEADYTRACKER COMPANY SHALL NOT BE LIABLE FOR ANY INCIDENTAL OR CONSEQUENTIAL DAMAGES FOR BREACH OF ANY EXPRESS OR IMPLIED WARRANTY ON THIS PRODUCT. EXCEPT TO THE EXTENT PROHIBITED BY APPLICABLE LAW, ANY IMPLIED WARRANTY OF MERCHANTABILITY OR FITNESS FOR A PARTICULAR PURPOSE ON THIS PRODUCT IS LIMITED TO THE DURATION OF THIS WARRANTY.

Return Merchandise Authorization Policy:

Damaged or defective SteadyTracker Company products that are purchased from The SteadyTracker Company or its authorized dealers may be returned for replacement only. The SteadyTracker Company will not accept returns for any other reason. All eligible returns require a Return Merchandise Authorization (RMA) number. EMAIL info@SteadyTracker.com, +63 32 236-7284 to obtain an RMA number. Items must be returned within 10 days of receiving your RMA number. Returned product must be in its original packaging with all contents included and must have the RMA number clearly marked on the outside of the package. Incomplete or unauthorized returns will be refused. RMA numbers and the address to return product may be obtained from The SteadyTracker Company by emailing info@SteadyTracker.com

Phone: 949-510-7249



FotoCrane™, SteadyTracker™, CobraCrane™ and logo are Trademarks of SteadyTracker LLC • Copyright ©

Thank you for your purchase. The SteadyTracker Company is a family owned and operated business. We appreciate any questions, comments, or concerns. Please feel free to contact us directly at dana.smith@steadytracker.com.