



Hand-Held Control Guns O&M Manual



- | | | |
|-------------------------------|---|------------------|
| HG-15K Dump Style 3/8" Barrel | - | Part #60-010-052 |
| HG-15K Dump Style 1/2" Barrel | - | Part #60-010-051 |
| HGDD-15K Double Dump | - | Part #60-050-006 |
| HGZT-15K Zero Thrust | - | Part #60-010-035 |
| HG-20K Dump Style | - | Part #60-020-006 |
| HGDD-20K Double Dump | - | Part #60-055-001 |
| HGZT-20K Zero Thrust | - | Part #60-020-013 |
| HG-40K Dump Style | - | Part #60-040-007 |
| HGDD-40K Double Dump | - | Part #60-040-015 |
| HG-40K Cobra 36" Barrel | - | Part #60-072-001 |
| HG-40K Cobra 48" Barrel | - | Part #60-072-062 |
| HGL-15K Lever Style | - | Part #60-030-004 |
| HGAC-40K Air Handle | - | Part #60-073-010 |
| HGAC-40K Air Controlled Gun | - | Part #60-073-028 |
| HGAC-40K Dual Air Control Gun | - | Part #60-073-027 |
| HGDS-15K Dry Shut Off Gun | - | Part #60-010-305 |
| HGDS-20K Dry Shut Off Gun | - | Part #60-020-307 |

ADVANCED PRESSURE SYSTEMS

701 S. Persimmon St., Suite 85 - Tomball, TX 77375

Toll Free in North America: (877) 290-4277

Phone: (281) 290-9950 Fax: (281) 290-9952

E-mail orders: sales-team@waterblast.pro

WWW.ADVANCEDPRESSURESYSTEMS.COM

WWW.WATERBLAST.PRO

High Quality Control Guns

Best Features in the Industry!



The new standard and are built tough for the demands of today's contracting environment.

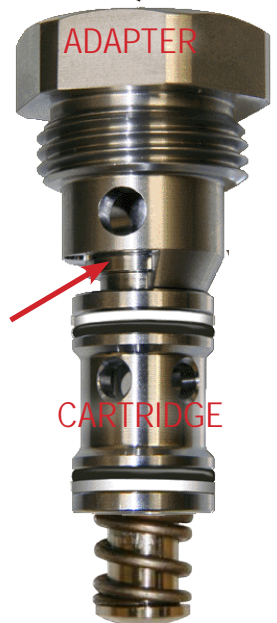
These control guns incorporate many superior features that are in demand today.

Easy-Change Cartridge overhaul in field in 30 seconds with common tools. Cartridge is interchangeable with Jetstream guns of the same pressure rating.

Dump tube port is positionable.

The shoulder stock and handgrip are both adjustable and the trigger has a safety lock to prevent accidental discharge.

Front barrels are 48" long and can be ordered in 3/8" or 1/2" pipe sizes.



Easy-Change Cartridge Assembly

Slides into cartridge adapter then screws into top of gun in 30 seconds or less!

Safety Trigger Lock



Safety lock must be disengaged to squeeze trigger

Hand-Held Control Gun Operating Instructions

PREPARE THE WATER BLASTING AREA: All personnel involved in the water jetting operation must take care to remove all foreign objects from the blast area. Small pebbles can become powerful projectiles. All people who are not directly involved in the blasting operation must be cleared away. Barriers must be provided to prevent traffic into the blasting area.

DRESS FOR SAFETY: The required dress for industrial shotgun cleaning operations includes a rubber waterblast suit, neoprene waterblasting gloves with textured grips, safety goggles, hard hat with face shield, hearing protection, steel-toed safety boots, and ideally, Kevlar® water-armor to shield the operator's body from dangerous blasts.

Most of the time the water used in water-blasting is not potable. Water splashed back from the water jets can easily penetrate unprotected skin, carrying with it a number of diseases that may not become evident for several days after exposure. Direct waterblast injuries are particularly bad not just because of the injury itself, and the contaminants in the water, but also the introduction of contaminated air to the bloodstream.

NEVER AIM WATERJET GUNS AT ANY BODY PART OR THE BODIES OF OTHER PEOPLE.

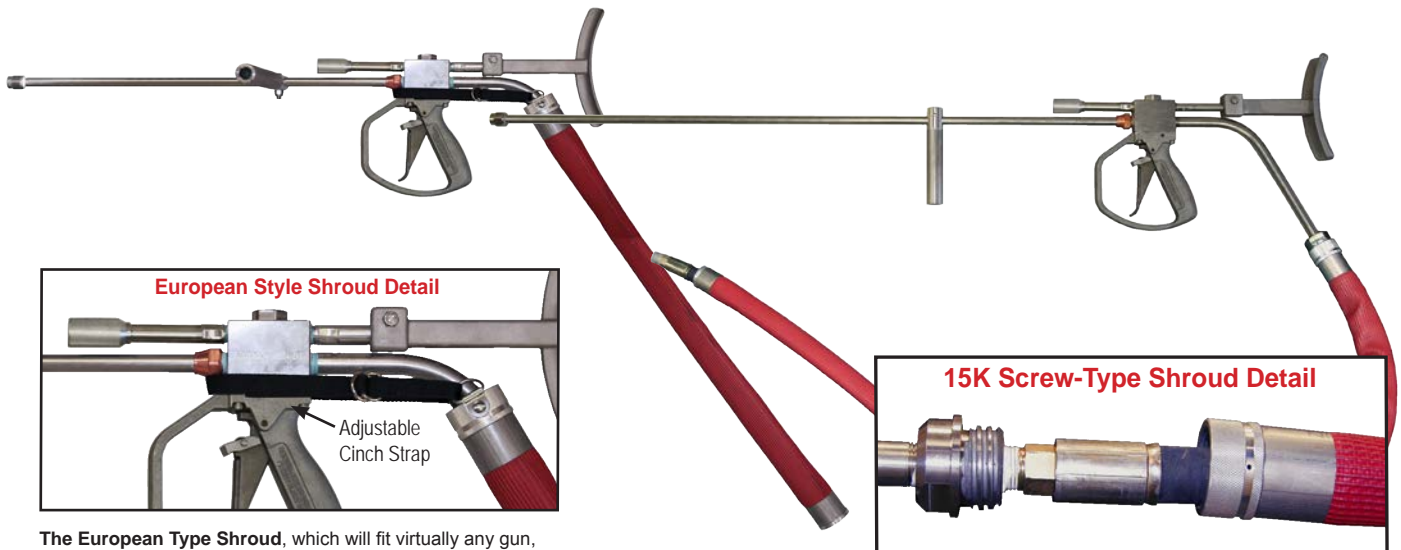


In the event of a waterblast injury, the patient must be taken to the hospital immediately and the medical personnel informed of the specific nature of the injury, including water conditions. The right information can save limbs and lives.

CONNECTIONS: The hose from the high pressure pump discharge end may either be connected directly to the whip hose and safety shroud assembly and then to the inlet nipple at the back of the gun, or to a flow divider (FDV) with another hose leading from the FDV to the whip hose and then to the inlet nipple at the back of the control gun.

We highly recommend the use of a safety whip hose with a safety shroud to protect from dangerous hose failures near the operator. APS offers several models to fit most operations and pressure ratings. A whip hose with safety shroud assembly is attached between the gun and supply hose by a shroud adapter and quick-disconnect coupler... all of these components are available from Advanced Pressure Systems.

NEVER USE A CONTROL GUN WITHOUT A SAFETY SHROUD.



The European Type Shroud, which will fit virtually any gun, and is held in place by an adjustable strap. It is light in weight, and with universal application it is a popular alternative to the Standard Screw Type Shroud.

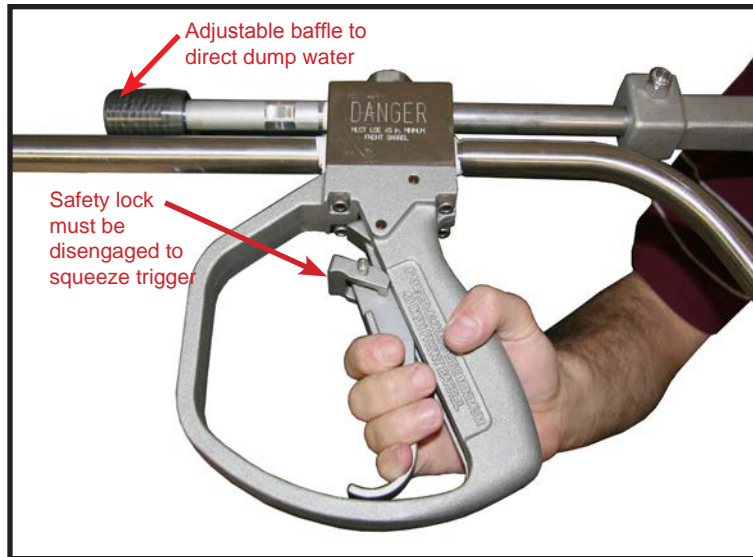


The Screw Type Shroud is held in place by a Shroud Adapter. This style is customized to fit specific guns and is very reliable and durable.

Whip Hose With Safety Shrouds Safe operation of hand held control guns requires the use of a **Safety Shroud** to guard the operator from failure of the hose fitting at the point where it is connected to the gun. Both of these shrouds have a nitrile outer cover, which resists oil, water and many solvents, and an inner layer of braided stainless steel. Safety Shrouds are essential equipment, and should be used in conjunction with a whip hose, which allows for connection to different high pressure sources, without the need to make frequent connections to the gun.

Part #	Whip Hose Shroud Assemblies
44-021-050	15-40K European Style Safety Shroud Assy. 3 Ft. Whip Hose
44-021-055	15-40K European Style Safety Shroud Assy. 6 Ft. Whip Hose
44-021-054	15-40K European Style Safety Shroud Assy. 10 Ft. Whip Hose
44-021-031	15-40K Screw Type Safety Shroud with 6 Ft. Whip Hose (6105ST x 5mm SS Type M x 9/16" MP LH SS Tube Nipple)

INSPECT THE GUN: Please check the gun thoroughly before use. The **APS** control guns incorporate a number of features intended to enhance safe operation. The dump tube has a baffle which can be adjusted to direct the dump water away from the operator. There is also a safety trigger lock that must be consciously moved up by the operator before the trigger can be activated. If this trigger lock does not stop the activation of the trigger, the gun should be removed from service until it is repaired.

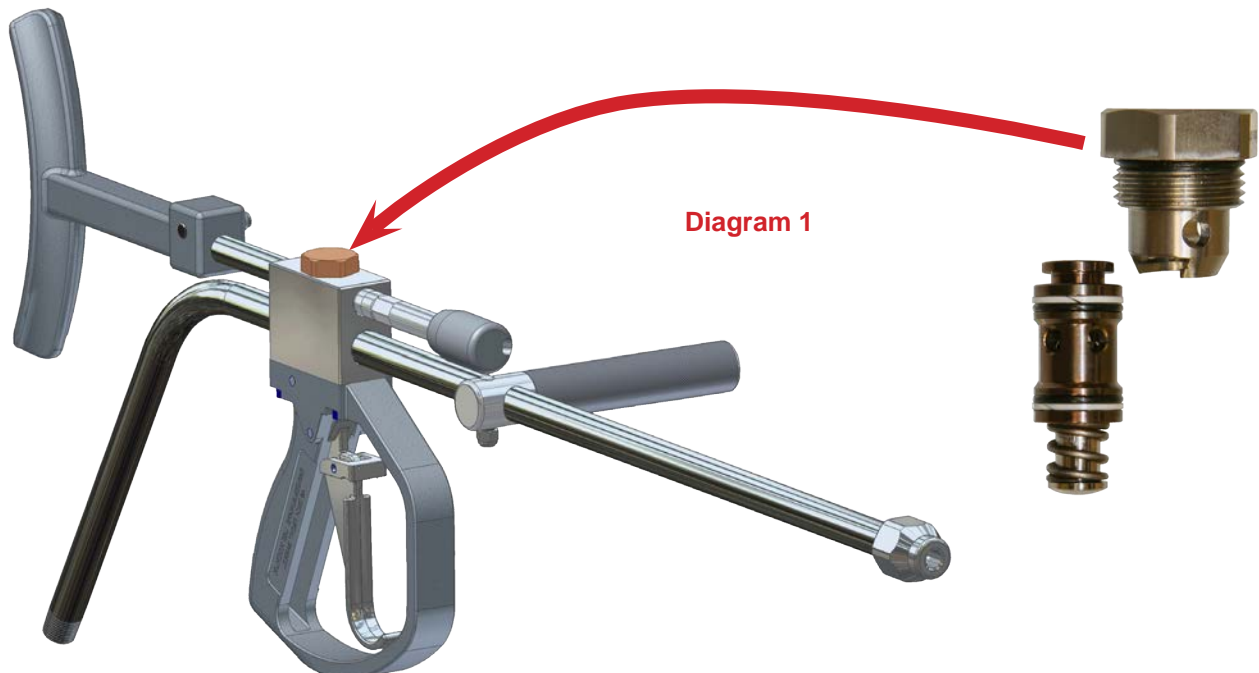


Hand-Held Control Gun Overhaul & Maintenance

These control guns are designed for ease of maintenance, quick and easy field overhaul and outstanding reliability. The most important part of the maintenance of this equipment is to keep it clean and free of corrosion and any contaminants, which could cause a malfunction. These control guns must be regularly disassembled and inspected for worn or damaged components, which must be replaced before the gun is placed back into service. Always remove any product which may have blown back onto the gun during operation.

AFTER EACH AND EVERY USE:

Remove the cartridge assembly and thoroughly wash the internal chambers of the gun with clean water. Also wash the cartridge and inspect it for signs of wear or damage, paying particular attention to the seating surface of the valve. As the valve wears it will show small cuts in the metal where the high pressure water is bypassing. If this problem is found, simply replace the whole cartridge assembly. Lightly lubricate o-rings and seals and reassemble. Wipe the outer surface of the gun to remove any signs of dirt or product blowback. Lubricate trigger and safety latch pivot points with a light oil.

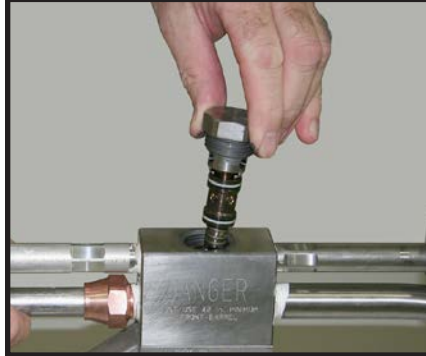


CARTRIDGE REPLACEMENT: Using an adjustable wrench, remove the cartridge nut located on the top of the gun. This will pull the cartridge assembly out of its chamber inside the gun block. The cartridge assembly can then be snapped out of the retaining groove at the lower end of the cartridge nut. Check to see that all components that will be reused are in good condition, and then snap in a new cartridge and reassemble. It is a quick and easy procedure. Always remember to keep everything as clean as possible. (see Diagram 1 below)

1. Loosen and unscrew Cartridge Holder from gun block.



2. Pull Cartridge Holder out



3. Slide old Cartridge out of Holder.



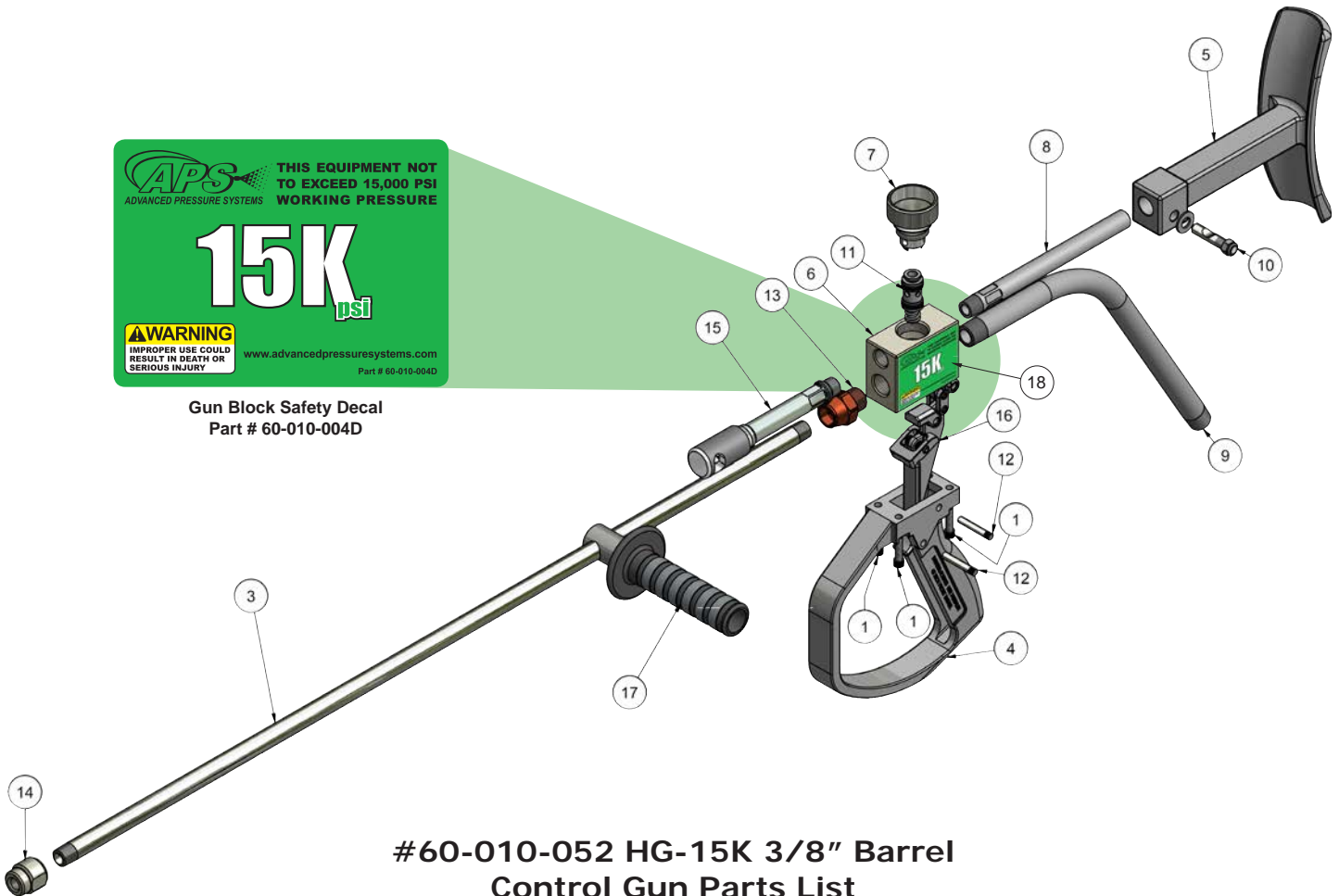
4. Slide new Cartridge into Holder, replace Holder into Gun Block.



“Handi Change” cartridge nut: Using only your hand, remove the cartridge “Handi Change” cartridge nut located on the top of the gun. This will pull the cartridge assembly out of its chamber inside the gun block. The cartridge assembly can then be snapped out of the retaining groove at the lower end of the cartridge nut. It is a quick and easy procedure.



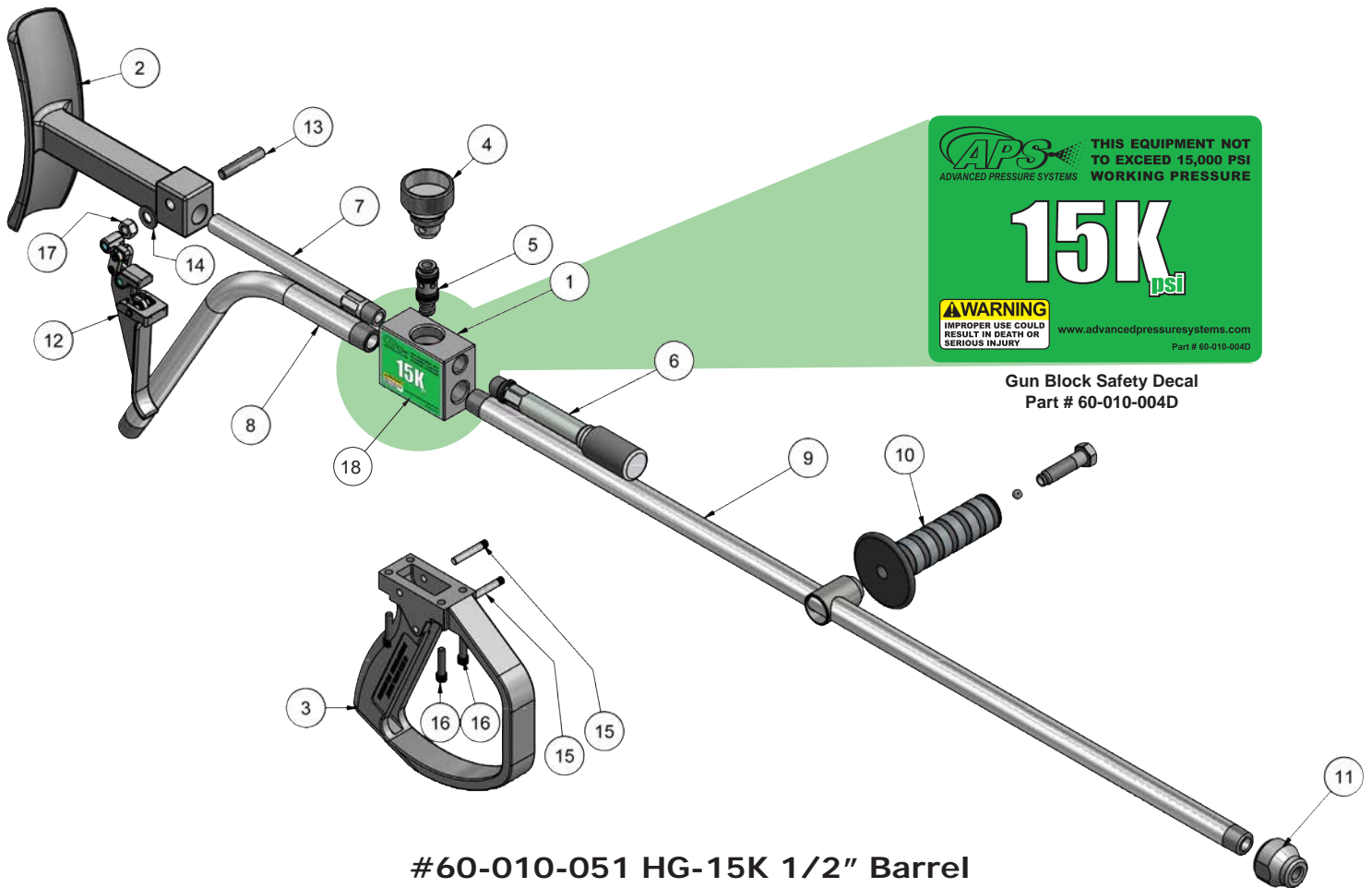
#60-010-052 HG-15K 3/8" Barrel Control Gun Exploded View



#60-010-052 HG-15K 3/8" Barrel Control Gun Parts List

ITEM	QTY	PART #	DESCRIPTION
1	4	10-001-100	1/4"-20 SS SHCS
2	1	10-010-001	Plain 375 SS Washer
3	1	20-012-048	15K Gun Barrel 48" Long
4	1	60-010-001	Gun Handle
5	1	60-010-003	Shoulder Stock
6	1	60-010-004	Gun Block 15K
7	1	60-010-005	"Handi Change" Cartridge Nut - 15K
8	1	60-010-009	Shoulder Stock Tube
9	1	60-010-012	Inlet Tube 15K
10	1	60-010-017	3/8" Barrel/Shoulder Stock Cam Stud (Incl. Locknut)
11	1	60-010-020	15K Cartridge Assembly
12	2	60-010-021	Trigger Pivot Pin
13	1	60-010-024	Barrel Bushing 1/2" to 3/8"
14	1	60-010-025	3/8" x 1/4" Nozzle Holder
15	1	60-010-057	Dump Tube Assembly
16	1	60-010-061	Trigger & Cam Assy w/Safety Latch
17	1	60-010-029	Quick Adjust Front Handle
18	2	60-010-004D	15K psi Safety Decal - Gun Block

#60-010-051 HG-15K 1/2" Barrel Control Gun Exploded View



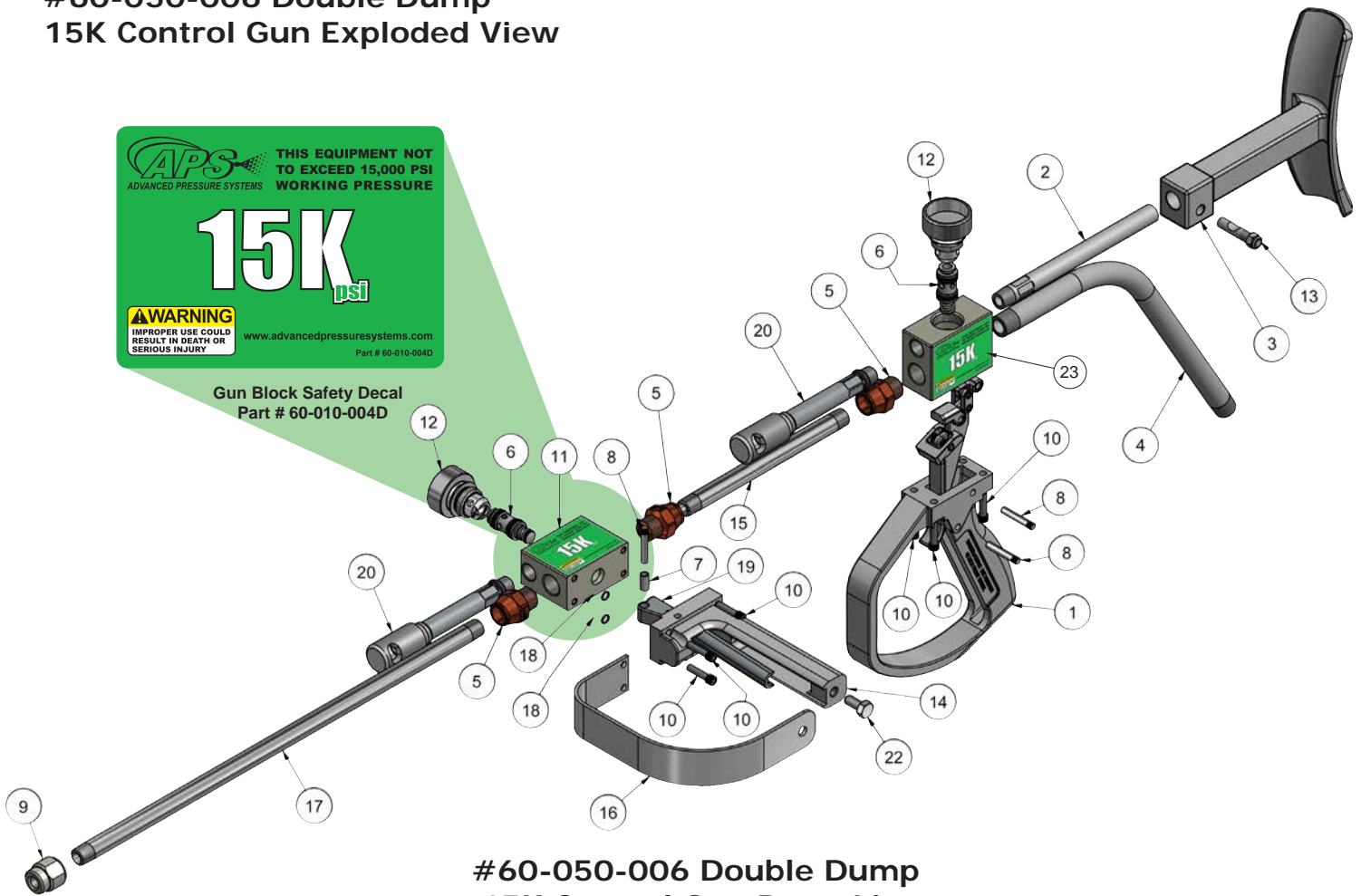
#60-010-051 HG-15K 1/2" Barrel Control Gun Parts List

ITEM	QTY	PART #	DESCRIPTION
1	1	60-010-004	Gun Block 15K
2	1	60-010-003	Shoulder Stock
3	1	60-010-001	Gun Handle
4	1	60-010-005	"Handi Change" Cartridge Nut 15K
5	1	60-010-020	15K Cartridge Assy.
6	1	60-010-057	Dump Tube Assembly
7	1	60-010-009	Shoulder Stock Tube
8	1	60-010-012	Inlet Tube
9	1	20-013-048	Front Barrel 48" long, 1/2" NPT at each end
10	1	60-010-028	Front Handle
11	1	60-010-026	Nozzle Holder 1/2" NPT x 1/4" NPT
12	1	60-010-027	Front Handle Cam Sud 1/2" Barrel
13	1	60-010-017	Shoulder Stock Cam Stud Assy.
14	2	10-010-001	3/8" Plain 3/8" Washer SS
15	2	60-010-021	Trigger Pivot Pin
16	4	10-001-100	SHCS 1/4" -20 SS
17	1	10-010-061	Trigger & Cam Assy. w/Safety Latch

#60-050-006 Double Dump 15K Control Gun Exploded View



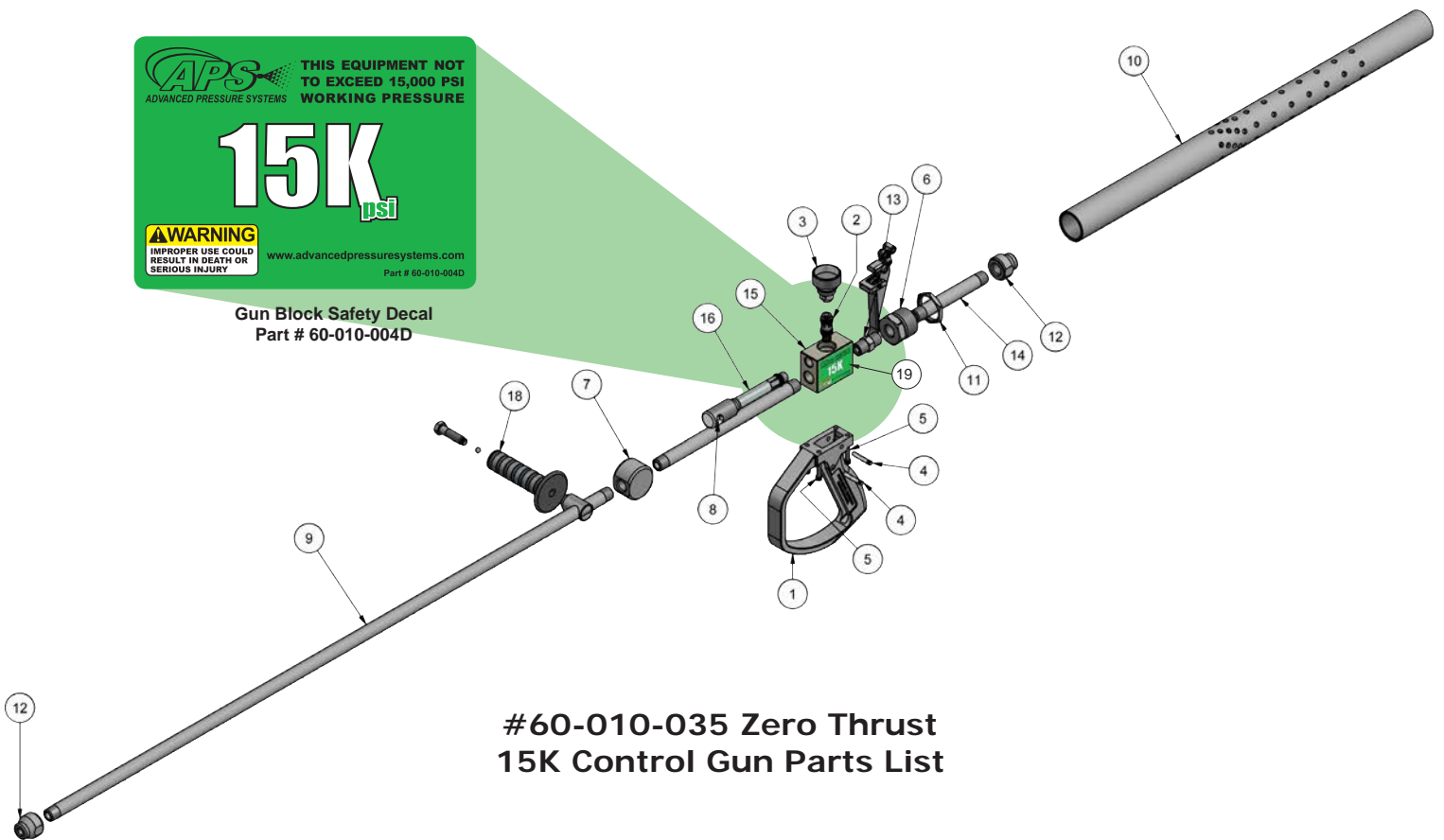
Gun Block Safety Decal
Part # 60-010-004D



#60-050-006 Double Dump 15K Control Gun Parts List

ITEM	QTY	PART #	DESCRIPTION
1	1	60-010-001	Gun Handle
2	1	60-010-009	Shoulder Stock Tube
3	1	60-010-003	Shoulder Stock
4	1	60-010-012	Inlet Tube 15K
5	3	60-010-024	Barrel Bushing 1/2" x 3/8"
6	2	60-010-020	15K Cartridge Assembly
7	1	60-010-022	Pivot Bushing
8	3	60-010-021	Trigger Pivot Pin
9	1	60-010-025	Nozzle Holder 3/8" x 1/4"NPT
10	8	10-001-100	1/4"-20 SHCS, 1" Long
11	2	60-010-004	Gun Block 15K
12	2	60-010-005	"Handi Change" Cartridge Nut - 15K
13	1	60-010-017	Shoulder Stock Cam Stud Assy.
14	1	60-050-002	Double Dump Gun Handle
15	1	20-012-008	Nipple 3/8" NPT x 8" Long
16	1	60-050-005	Double Dump Handle Trigger Guard
17	1	20-012-036	3/8" NPT Barrel 36" Long
18	2	30-001-010	O-Ring 2-010 BUNA-N, 90 Dur.
19	1	60-050-003	Double Dump Front Trigger
20	2	60-010-057	Dump Tube Assembly
21	1	60-010-061	Trigger & Cam w/Safety Latch
22	1	10-016-075	Bolt, Hex Head 3/8"-16 X 3/4" SS
23	4	60-010-004D	15K psi Safety Decal - Gun Block

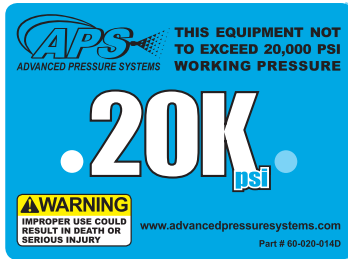
#60-010-035 Zero Thrust 15K Control Gun Exploded View



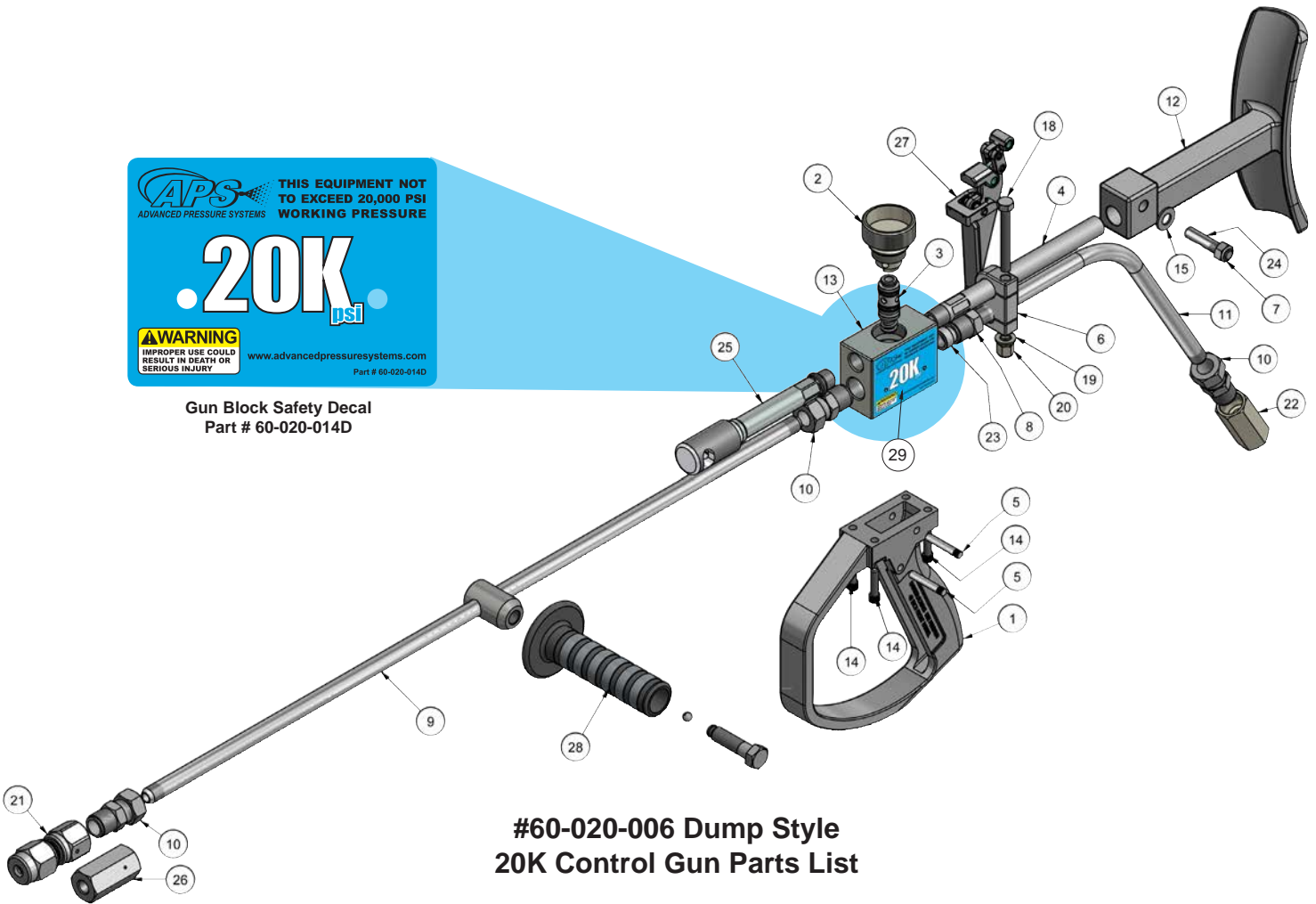
#60-010-035 Zero Thrust 15K Control Gun Parts List

ITEM	QTY	PART #	DESCRIPTION
1	1	60-010-001	GUN HANDLE
2	1	60-010-020	CARTRIDGE ASSY. 15K
3	1	60-010-005	CARTRIDGE NUT
4	1	60-010-003	TRIGGER SAFETY LATCH PIN
5	2	60-010-021	TRIGGER PIVOT PIN
6	4	10-001-100	1/4"-20 x 1" SS. SHCS
7	1	60-010-034	ADAPTER for DIFFUSER
8	1	20-004-004	WAFER TEE 1/2" NPT 15K
9	1	20-013-008	NIPPLE 8" LNG. 1/2"NPT 15K
10	1	20-013-036	NIPPLE 36" LNG. 1/2" NPT 15K
11	1	60-010-032	DIFFUSER
12	1	60-010-033	JAM NUT - DIFFUSER
13	2	60-010-026	NOZZLE HOLDER 1/2" NPT x 1/4" NPT
14	1	20-011-008	HEX. NIPPLE 1/2" x 1/2" NPT
15	1	20-013-006	NIPPLE 6" LNG 1/2"NPT 15K
16	1	60-010-028	FRONT HANDLE
17	1	60-010-027	FRONT HANDLE CAM STUD (incl. nut)
18	1	60-010-004	GUN BLOCK 15K
19	1	60-010-057	DUMP TUBE ASSEMBLY
20	1	60-010-061	Trigger & Cam w/Safety Latch

#60-020-006 Dump Style 20K Control Gun Exploded View



Gun Block Safety Decal
Part # 60-020-014D

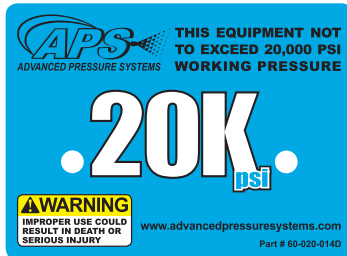


#60-020-006 Dump Style 20K Control Gun Parts List

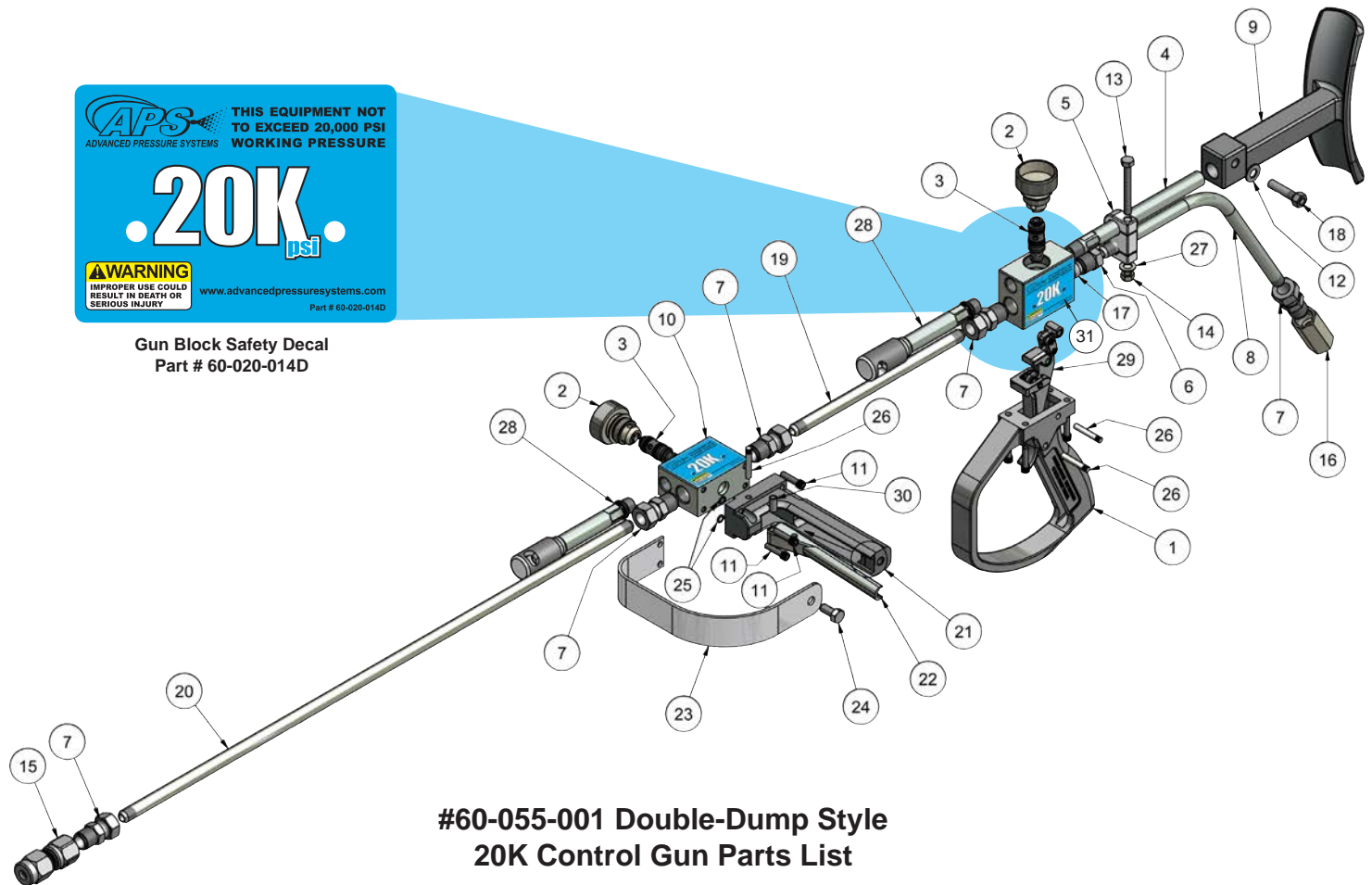
ITEM	QTY	PART NUMBER	DESCRIPTION
1	1	60-010-001	Gun Handle
2	1	60-020-005	"Handi Change" Cartridge Nut 20K
3	1	60-020-010	20K Cartridge Assembly
4	1	60-010-009	Shoulder Stock Tube
5	2	60-010-021	Trigger Pivot Pin
6	1	60-020-012	Inlet Tube Clamp
7	1	10-100-002	Nylon Lock Nut
8	1	21-002-003	Gland Nut 5625
9	1	21-022-048	MP Nipple 48" Long
10	3	21-005-003	Anti-Vibe Assy 5625
11	1	60-020-007	Gun Inlet Tube 20K
12	1	60-010-003	Shoulder Stock
13	1	60-020-014	Gun Block 20K
14	4	10-001-100	SHCS 1"

ITEM	QTY	PART NUMBER	DESCRIPTION
15	1	10-010-001	Plain 3/8" SS washer
18	1	10-017-250	Clamp Bolt SS 5/16"-18,x 2-1/2" long
19	1	10-010-002	5/16" Flat Washer
20	1	10-100-003	Nylon Lock Nut 5/16"-18
21	1	17-025-000	Nozzle Holder Assembly
22	1	21-012-103	Coupling 9/16"MP (Without Gland Nut & Collar)
23	1	21-003-003	Collar
24	1	60-010-017	Shoulder Stock Cam Stud
25	1	60-010-057	Dump Tube Assembly
26	1	20-028-101	9/16"MP x 1/4" NPT(Alternative Nozzle Holder)
27	1	60-010-061	Trigger & Cam Assembly w/Safety Latch
28	1	60-020-008	9/16" MP/HP QUICK ADJUST FRONT HANDLE ASSEMBLY
29	1	60-020-014D	20K psi Safety Decal - Gun Block

#60-055-001 Double-Dump Style 20K Control Gun Exploded View



Gun Block Safety Decal
Part # 60-020-014D

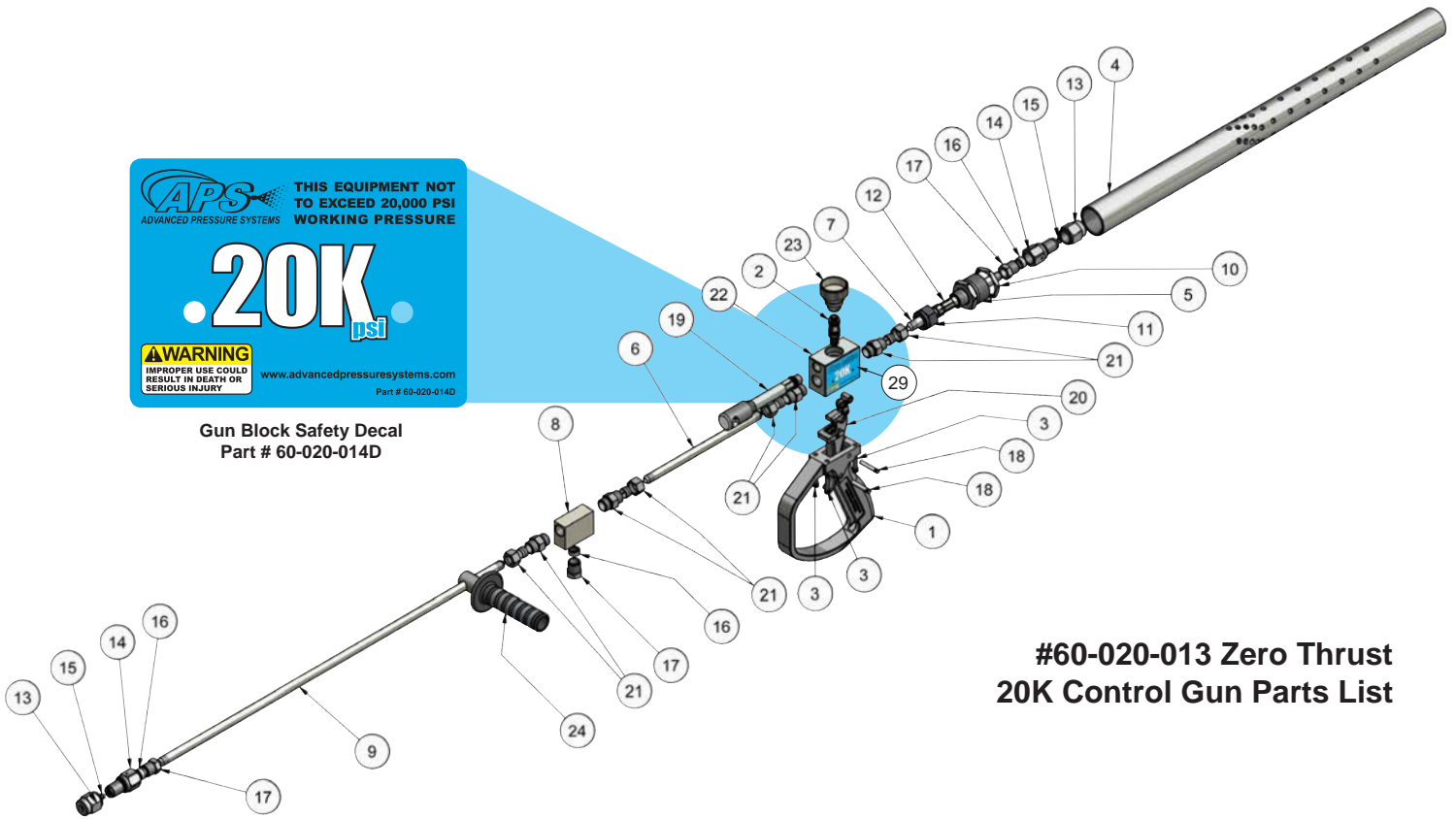


#60-055-001 Double-Dump Style 20K Control Gun Parts List

ITEM	QTY	PART #	DESCRIPTION
1	1	60-010-001	Gun Handle
2	2	60-020-005	"Handi Change" Cartridge Nut 20K
3	2	60-020-010	Cartridge Assembly 20K
4	1	60-010-009	Shoulder Stock Tube
5	1	60-020-012	Inlet Tube Clamp
6	1	21-002-003	Collar 9/16" MP
7	5	21-005-003	MP Anti-Vibe Assy.
8	1	60-020-007	Gun Inlet Tube 20K
9	1	60-010-003	Shoulder Stock
10	2	60-020-014	BLOCK, 20K CONTROL GUN (NEW)
11	8	10-001-100	SHCS 1/4"-20 1" Long
12	1	10-010-001	3/8" Plain Washer
13	1	10-017-250	Hex Head 5/16"-18 x 2-1/2" Long
14	1	10-100-003	Nylon Locknut 5/16"-18 SS
15	1	17-025-000	Nozzle Holder Assy.20K 9/16" MP (Drop In)
16	1	21-012-103	Coupler 9/16"MP 20K without Gland Nut & Collar

ITEM	QTY	PART #	DESCRIPTION
17	1	21-003-003	9/16" Gland Nut MP
18	1	60-010-017	Cam Stud for Shouldder Stock
19	1	21-022-010	NIPPLE, 9/16" MP/LH X 10" SS (20K MAWP)
20	1	21-022-036	NIPPLE, 9/16" MP/LH X 36" SS (20K MAWP)
21	1	60-050-002	Double Dump Handle
22	1	60-050-003	Double Dump Trigger
23	1	60-050-005	Double Dump Trigger Guard
24	1	10-016-075	3/8"-16 Bolt, 3/4" long
25	2	30-001-010	O-Ring 2-010
26	3	60-010-021	Trigger Pivot Pin
27	1	10-010-002	Washer. Flat 5/16"
28	2	60-010-057	Dump Tube Assembly
29	1	60-010-061	Trigger & Cam Assy. w/Safety Latch
30	1	60-010-022	Trigger Pin Pivot Bushing
31	4	60-020-014D	20K psi Safety Decal - Gun Block

#60-020-013 Zero Thrust 20K Control Gun Exploded View

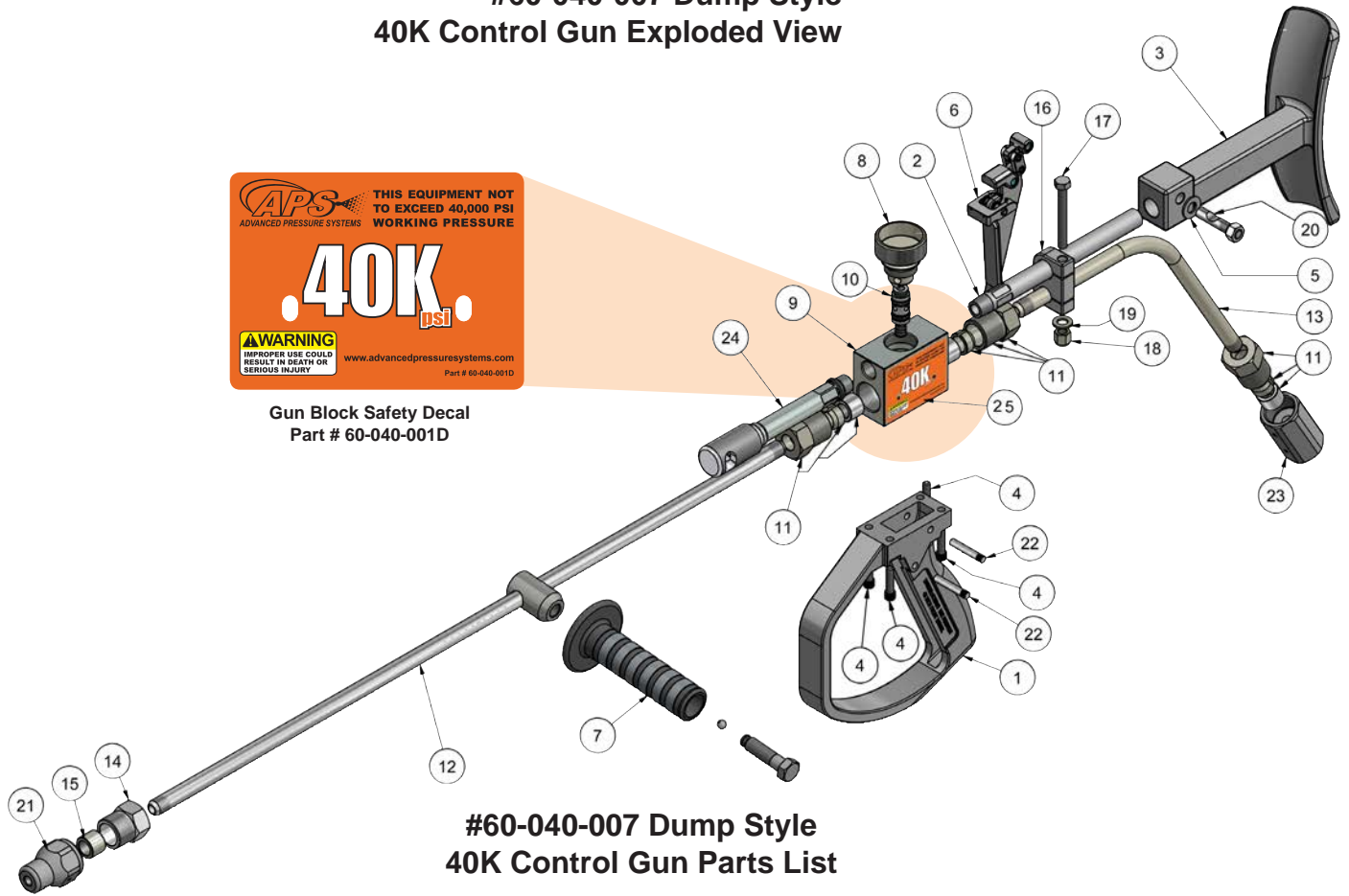


#60-020-013 Zero Thrust 20K Control Gun Parts List

ITEM	QTY	PART #	DESCRIPTION
1	1	60-010-001	Gun Handle
2	1	60-020-010	20K Cartridge Assembly
3	4	10-001-100	SHCS 1/4"-20 x 1" Long
4	1	60-010-032	Diffuser for Zero Thrust Gun
5	1	60-020-015	Diffuser Adapte - 20K Zero Thrust Gun
6	1	21-022-010	9/16" MP Nipple 10" Long
7	1	21-022-008	9/16" MP Nipple 8" Long
8	1	21-010-003	9/16" MP Tee (without Gland Nuts & Collars)
9	1	21-022-036	9/16" MP Nipple 36" Long
10	1	60-010-033	Jam Nut - Thrust Diffuser
11	1	20-002-004	Collet Nut
12	1	20-022-010	Collet 9/16"
13	2	17-025-001	Nozzle Holder Nut 20K

ITEM	QTY	PART #	DESCRIPTION
14	2	17-025-002	Nozzle Holder 20K
15	2	30-001-010	O-Ring 2-010
16	3	21-002-003	Collar, 9/16" MP
17	3	21-003-003	Gland Nut, 9/16" MP
18	2	60-010-021	Trigger Pivot Pin
19	1	60-010-057	Dump Tube Assembly
20	1	60-010-061	Trigger and Cam Assembly w/safety latch
21	4	21-005-003	Antivibration collet Assembly
22	1	60-020-013	Gun Block 20K
23	1	60-020-005	"Handi Change" Cartridge Nut 20K
24	1	60-020-008	Quick Adjust Front Handle
25	1	60-010-061	Trigger Assembly
27	2	60-020-014D	20K psi Safety Decal - Gun Block

#60-040-007 Dump Style 40K Control Gun Exploded View



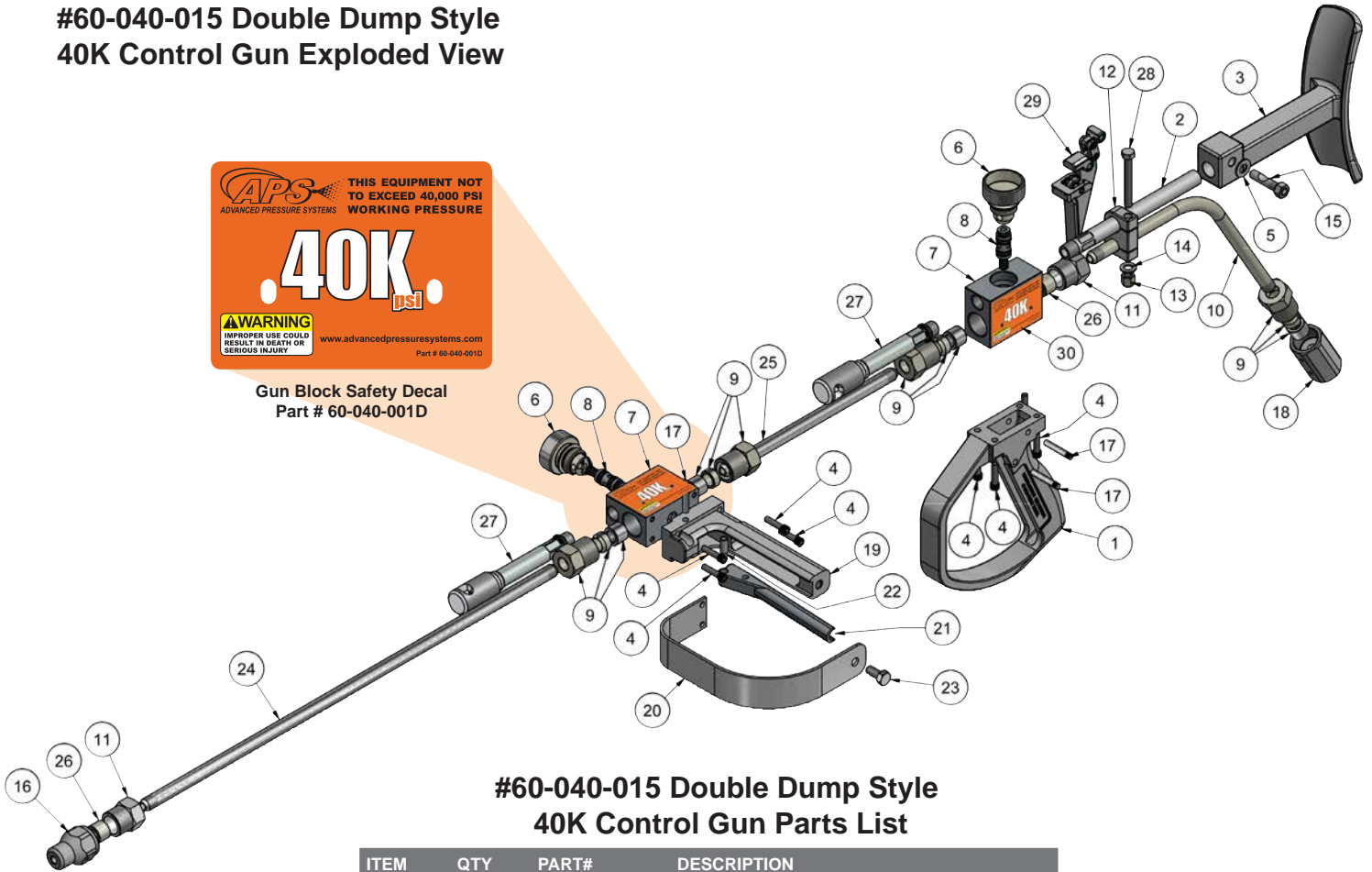
#60-040-007 Dump Style 40K Control Gun Parts List

ITE	QTY	PART #	DESCRIPTION
1	1	60-010-001	Gun Handle
2	1	60-010-009	Shoulder Stock Tube
3	1	60-010-003	Shoulder Stock
4	4	10-001-100	SHCS 1/4"-20 x 1" Long SS
5	1	10-010-001	3/8" SS Plain Washer
6	1	60-010-061	Trigger & Cam Assy. w/Safety Latch
7	1	60-020-008	9/16" MP/HP QUICK ADJUST FRONT HANDLE ASSEMBLY
8	1	60-040-006	Cartridge Nut
9	1	60-040-001	Hand Gun Block 40K
10	1	60-040-005	Cartridge Assembly 40K
11	3	22-008-003	9/16" HP Anti-Vibe Collet Assembly
12	1	22-016-048	9/16" HP Nipple 48" Long
13	1	60-040-008	Gun Inlet Tube 40K
14	1	22-003-003	Gland Nut 9/16" HP
15	1	22-002-003	Collar 9/16" HP
16	1	60-020-012	Inlet Tube Clamp
17	1	10-017-250	Clamp Bolt 5/16-18 x 2-1/2" Long
18	1	10-100-003	5/16" Nylon Lock Nut
19	1	10-010-002	Flat Washer 5/16" SS
20	1	60-010-017	Shoulder Stock Cam Stud (incl. Nylon Lock Nut)
21	1	17-027-000	Nozzle Holder 40K
22	2	60-010-021	Trigger Pivot Pin
23	1	22-011-113	9/16" HP Coupling
24	1	60-010-057	Dump Tube Assembly
25	2	60-040-001D	40K psi Safety Decal - Gun Block

#60-040-015 Double Dump Style 40K Control Gun Exploded View



Gun Block Safety Decal
Part # 60-040-001D

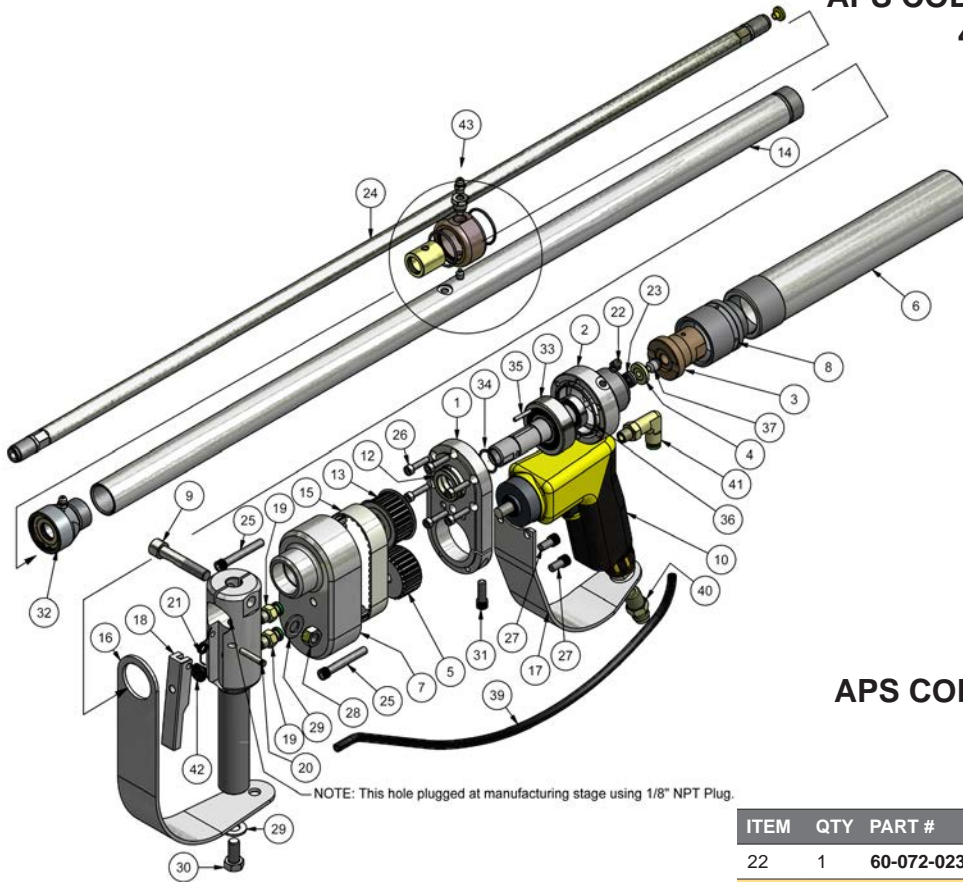


#60-040-015 Double Dump Style 40K Control Gun Parts List

ITEM	QTY	PART#	DESCRIPTION
1	1	60-010-001	Gun Handle
2	1	60-010-009	Shoulder Stock Tube
3	1	60-010-003	Shoulder Stock
4	8	10-001-100	SHCS 1/4"-20 x 1" Long
5	1	10-010-001	3/8" SS Washer
6	2	60-040-006	Handi Cartridge Nut - 40k
7	2	60-040-001	40K Gun Block
8	2	60-040-005	40K Cartridge Assembly
9	4	22-008-003	9/16" Anti-Vibe Gland Nut and Collar Assy.
10	1	60-040-008	Inlet Tube 40K
11	2	22-003-003	Gland Nut
12	1	60-020-012	Inlet Tube Clamp
13	1	10-100-003	Nylon Locknut 5/16"-18 SS
14	1	10-010-002	Flat Washer 5/16" SS
15	1	60-010-017	Shoulder Stock Cam Stud
16	1	17-027-000	Nozzle Holder, 9/16" HP x 3/8"-24 UNF
17	3	60-010-021	Trigger Pivot Pin
18	1	22-011-113	Coupler 9/16"HP 40K (w/o Gland Nut & Collar)
19	1	60-050-002	Double Dump Gun Front Handle
20	1	60-050-005	Double Dump Trigger Guard
21	1	60-050-003	Double Dump Trigger
22	1	60-010-022	Pivot Pin Bushing
23	1	10-016-075	Bolt, Hex. Head 3/8"-16 X 3/4" SS
24	1	22-016-036	Nipple 9/16" HP/LH x 36"
25	1	22-016-010	Nipple 9/16" HP/LH x 10"
26	2	22-002-003	9/16" HP Collar
27	2	60-010-057	Dump Tube Assembly
28	1	10-017-250	5/16"-18 SS Bolt 2-1/2" Long
29	1	60-010-061	Trigger & Cam Assy. w/Safety Latch
30	4	60-040-001D	40K psi Safety Decal - Gun Block

Part #	Barrel* Length	Overall Length	Rotation Speed	Weight	Air Demand		Operating Pressure	Max. Flow	Required Inlet Connection	Nozzle Connection
	In.				In.	RPM				
60-072-001	36"	46"	1700-3000	10.75	90	22	40,000	7	3/8" HP Female	9/16" HP Button
60-072-062	48"	58"	1700-3000	12.3	90	22	40,000	7	3/8" HP Female	9/16" HP Button

APS COBRA - Air operated rotating Style 40K Control Gun Exploded View



APS COBRA - Air operated rotating Style 40K Control Gun Parts List

ITEM	QTY	PART #	DESCRIPTION
1	1	60-072-002	40 K COBRA - Back plate
2	1	60-072-004	40K COBRA - Swivel bearing housing
3	1	60-072-005	40K COBRA - Swivel inlet adapter
4	1	60-072-006	40K COBRA - Swivel seal back up ring
5	1	60-072-007	40K COBRA - Pulley, drill motor. Alum. 26 pitch drive
6	1	60-072-008	40K COBRA - Hose protector
7	1	60-072-009	40K COBRA - Belt drive cover
8	1	60-072-010	40K COBRA - Bearing retaining cap
9	1	60-072-012	40K COBRA - Cam Stud/Barrel shroud
10	1	60-072-013	40K COBRA - Barrel shroud
11	1	60-072-015	40K COBRA - Front handle
12	1	60-072-016	Grease seal
13	1	60-072-020	40K COBRA - Timing/Drive sprocket
14	1	60-072-019	40K COBRA - Barrel shroud
15	1	60-072-022	Timing/Drive Belt
16	1	60-072-027	40K COBRA - Air Motor trigger guard
17	1	60-072-028	40K COBRA - Front handle trigger guard
18	1	60-072-025	40K COBRA - Trigger, Front handle
19	2	60-072-031	Connector - 1/8" NPT Prestolok
20	1	60-072-032	40K COBRA - Front handle trigger pin
21	1	60-072-033	40K COBRA - Front handle trigger pin

ITEM	QTY	PART #	DESCRIPTION
22	1	60-072-023	Grease zerk
23	1	60-072-026	Oil/Grease seal
24	1	60-072-035	40K COBRA - Barrel 9/16"-18 UHM B/E x 34-3/16" long
25	2	10-001-175	SHCS 1/4"-20 x 1-3/4" long
26	6	10-008-075	SHCS 10-32 x 3/4" long.
27	2	10-001-050	SHCS 1/4"-20 x 1/2" long
28	1	10-100-002	3/8"-16 Nylon Lock Nut
29	2	10-010-001	Flat washer 3/8" SS
30	1	10-016-075	Hex. bolt, 3/8"-16 x 3/4" long SS.
31	1	10-003-075	SHCS 1/4"-28 x 3/4" long
32	1	60-072-070	Front bearing assembly
33	1	60-072-141	40K COBRA - Shaft/Bearing assembly
34	1	60-072-037	Spiral retaining clip
35	1	60-072-038	Keyway pin
36	1	30-002-031	O-Ring, 2-013 Buna 70 Dur.
37	1	60-072-049	40K COBRA - Swivel shaft seal
38	1	60-072-041	40K Brass button seal J/S
39	1	60-072-040	1/4" air tubing
40	1	60-072-042	Fitting 3/8" JIC x 1/4" NPT
41	1	60-072-039	Swivel elbow - 1/4" x 1/8" NPT Prestolok
42	1	60-072-034	Ribber insert for front trigger
43	1	60-072-024	Center Barrel Bearing Assembly

#60-040-012 Zero-Trust Style 40K Control Gun Exploded View

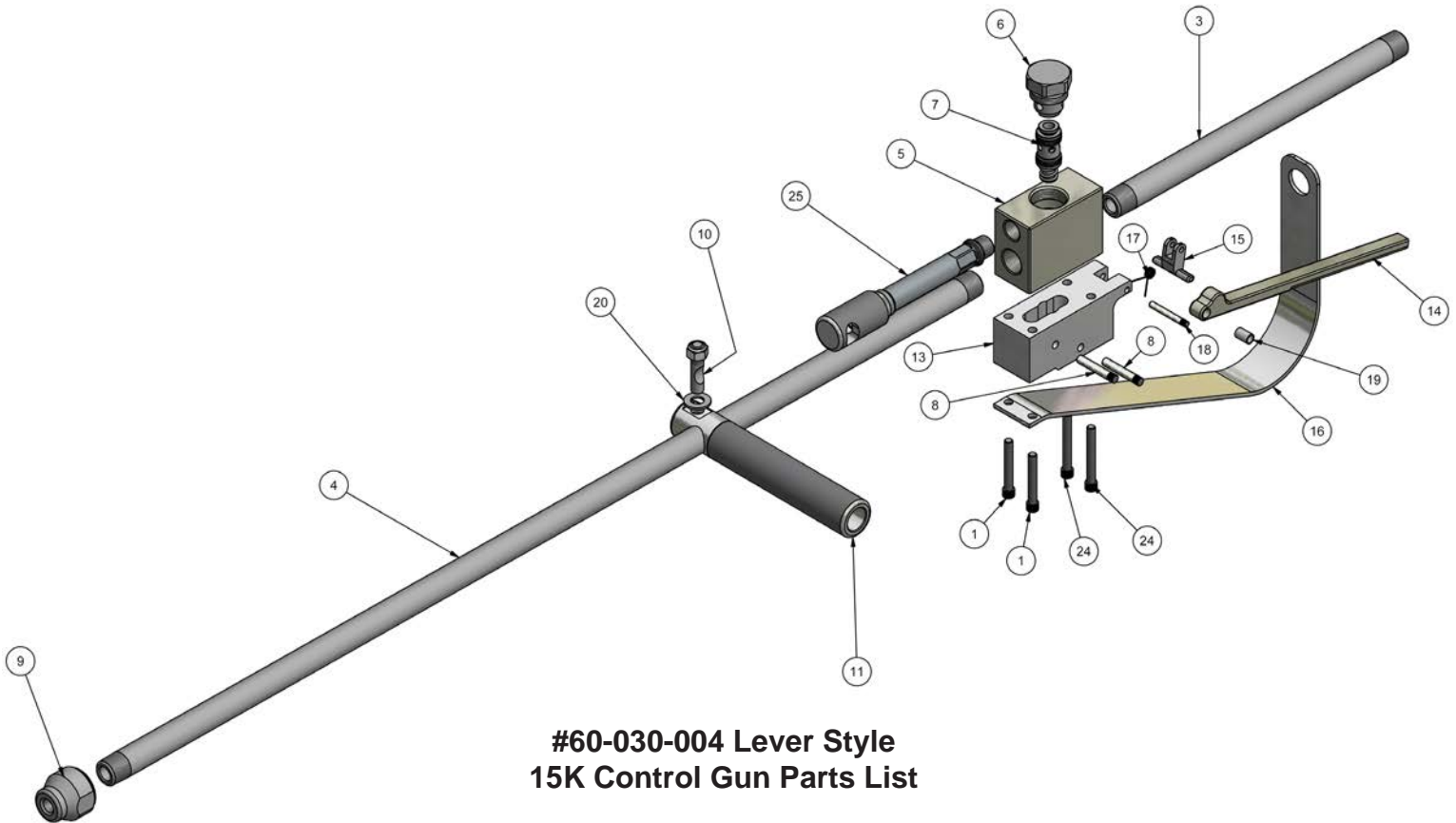


#60-040-012 Zero-Trust Style 40K Control Gun Parts List

ITEM	QTY	PART #	DESCRIPTION
1	1	60-010-001	Gun Handle
2	4	10-001-100	SHCS 1/4"-20 x 1" long
3	1	60-040-001	40K Gun Block
4	2	60-010-021	Trigger Pivot Pin
5	1	60-010-057	Dump Tube Assembly
6	1	60-010-061	Trigger & Cam Assembly w/Safety Latch
7	1	22-016-010	HP Nipple 9/16" x 10" long
8	1	22-016-008	HP Nipple 9/16" x 8" long
9	1	60-020-015	Diffuser Adapter
10	4	22-008-003	9/16" HP Anti-Vibe Collet Asseby
11	1	22-007-103	9/16"HP Tee

ITEM	QTY	PART #	DESCRIPTION
12	1	20-002-004	Collet Nut
13	1	20-022-010	Collet
14	1	60-010-033	Jam Nut
15	2	22-003-003	9/16" HP Gland Nut
16	2	22-002-003	9/16" HP Collar
17	2	17-027-000	40K Nozzle
18	1	22-016-036	9/16" HP Nipple x 36" long
19	1	60-010-032	Diffuser Tube
20	1	60-040-006	Cartridge Nut
21	1	60-040-005	40K Cartridge Assembly
22	2	60-040-001D	40K psi Safety Decal - Gun Block

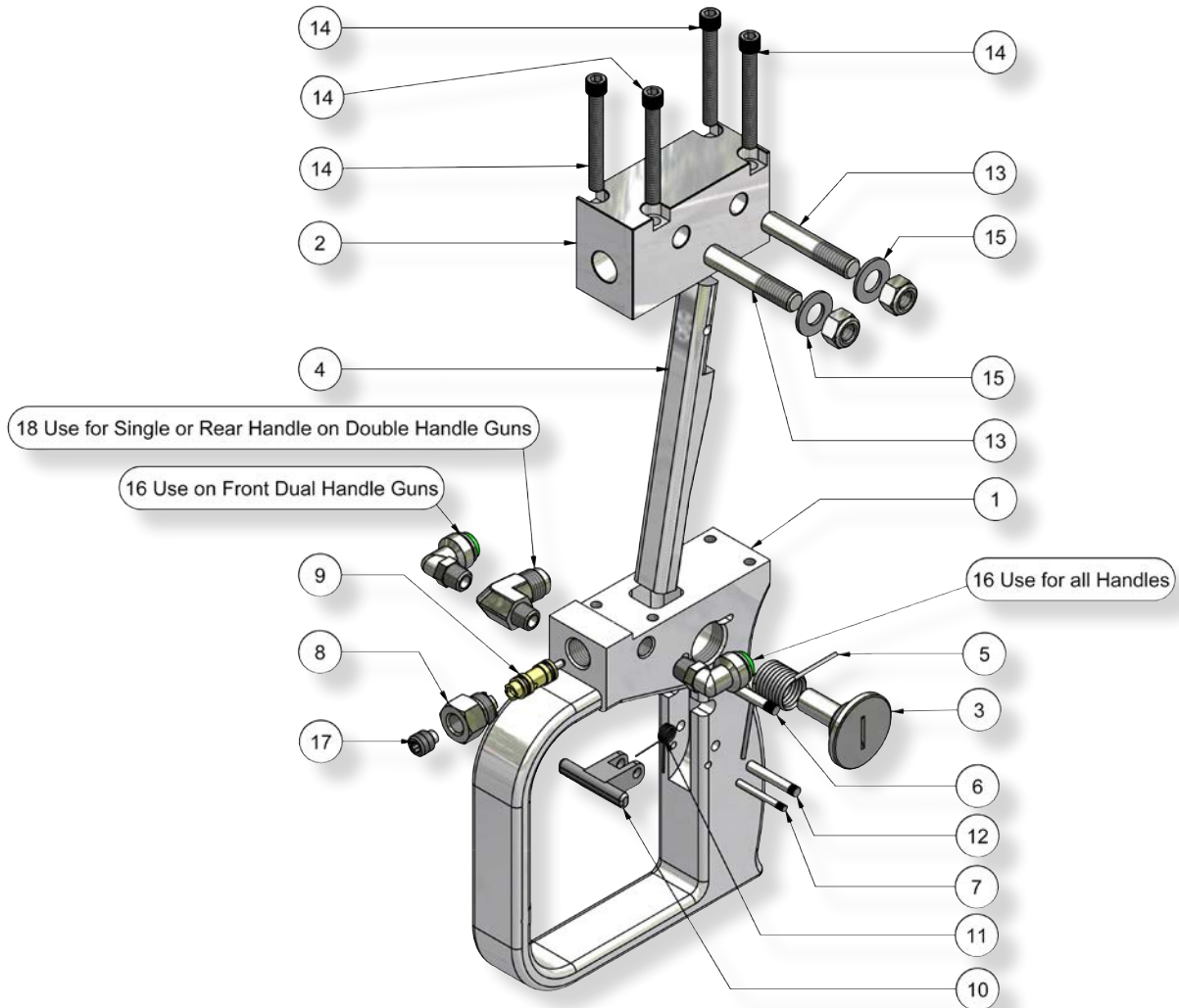
#60-030-004 Lever Style 15K Control Gun Exploded View



**#60-030-004 Lever Style
15K Control Gun Parts List**

ITEM	QTY	PART #	DESCRIPTION
1	2	10-001-175	SHCS 1/4"-20 x 1-3/4" long SS
2	1	10-100-002	3/8-16 Nylon Locknut
3	1	20-013-012	Inlet Tube 12" long
4	1	20-013-048	Front Barrel 48" long
5	1	60-010-004	15K Gun Block
6	1	60-010-005	15K Cartridge Nut
7	1	60-010-020	15K Cartridge Assembly
8	2	60-010-021	Trigger Pin
9	1	60-010-026	15K Nozzle Holder
10	1	60-010-027	Front Handle Cam Stud 1/2" Barrel (incl. Nut)
11	1	60-010-028	Front Handle
13	1	60-030-001	Lever Gun mounting block
14	1	60-030-002	Lever Gun Trigger
15	1	60-030-003	Lever Gun Safety Latch
16	1	60-030-005	Lever Gun Trigger Guard
17	1	60-030-006	Safety Latch Spring
18	1	60-030-008	Safety Latch Pivot Pin
19	1	60-030-009	Trigger Pivot Pin Bushing
20	1	10-010-001	3/8" Plain washer SS
24	2	10-001-200	SHCS 1/4"-20 x 2" long SS
25	1	60-010-057	Dump Tube Assembly Complete

#60-073-010 and 60-073-015 Air Controlled 40K Control Gun Exploded View

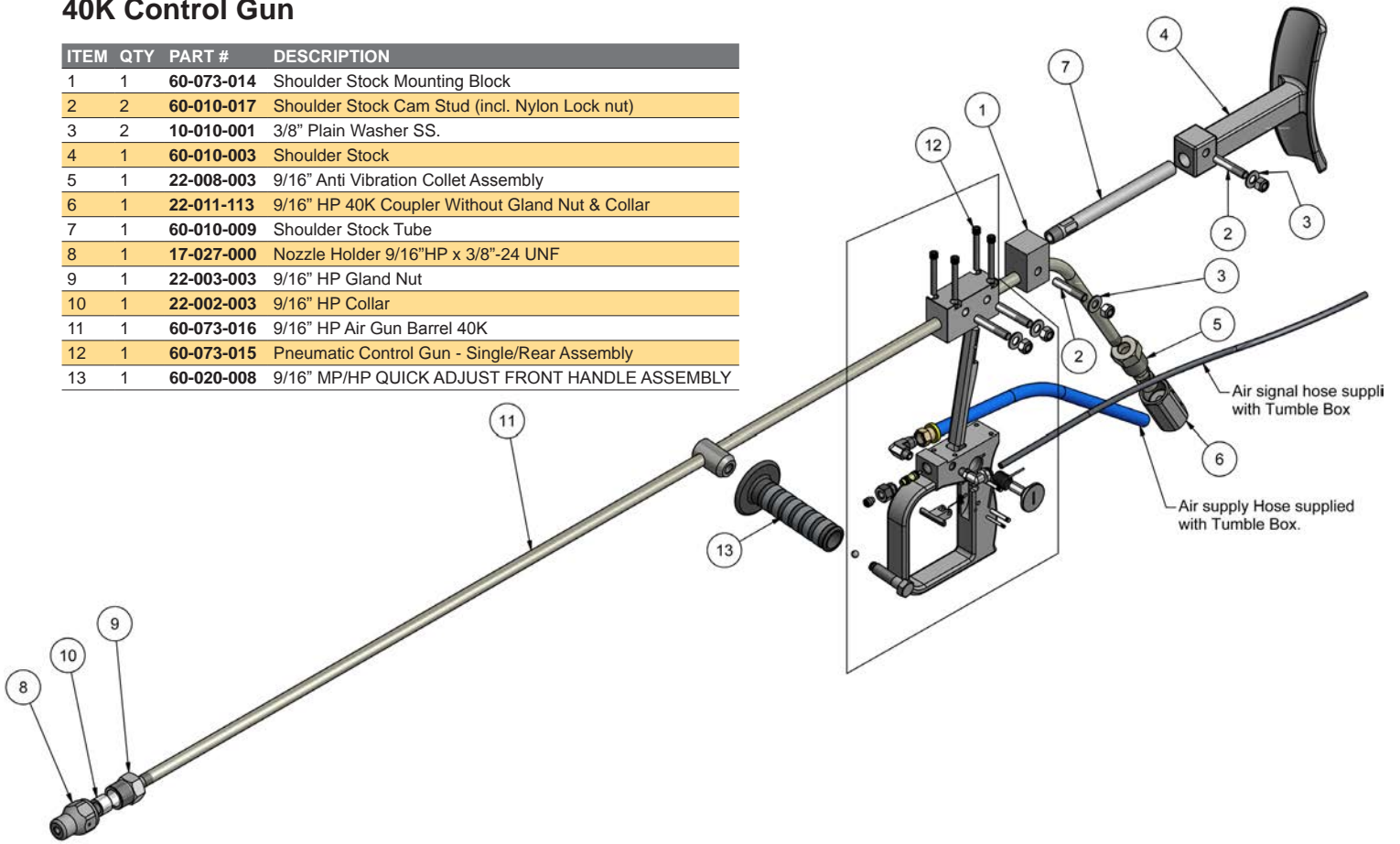


#60-073-010 Air Controlled 40K ITEM QTY PART NUMBER DESCRIPTION 1 1 60-073-015 Pneumatic Gun Handle (Rear)

ITEM	QTY	PART #	DESCRIPTION
1	1	60-073-001	Air Control Gun Handle
2	1	60-073-002	Air Control Gun - Barrel block
3	1	60-073-003	Trigger Spring Mandrel
4	1	60-073-004	Trigger
5	1	60-073-005	Trigger Spring
6	1	60-073-006	Trigger Pivot Pin
7	1	60-073-007	Safety Latch Stop
8	1	60-073-008	Cartridge valve Retainer Nut
9	1	60-073-009	Poppet Cartridge Valve
10	1	60-030-003	Safety Latch
11	1	60-030-006	Safety Latch Spring
12	1	60-073-011	Safety Latch Pivot Pin
13	2	60-073-012	Cam Stud - 9/16" Barrel (incl. Nylon Lock Nut)
14	4	10-001-200	1/4"-20 SHCS x 2" long
15	2	10-010-001	3/8" Plain washer SS
16	2	60-073-013	Prestolok Compact Elbow
17	2	15-118-000	1/8"NPT x socket head plug.
18	1	60-073-018	1/8"NPT x 3/8" JIC Prestolok Compact Elbow

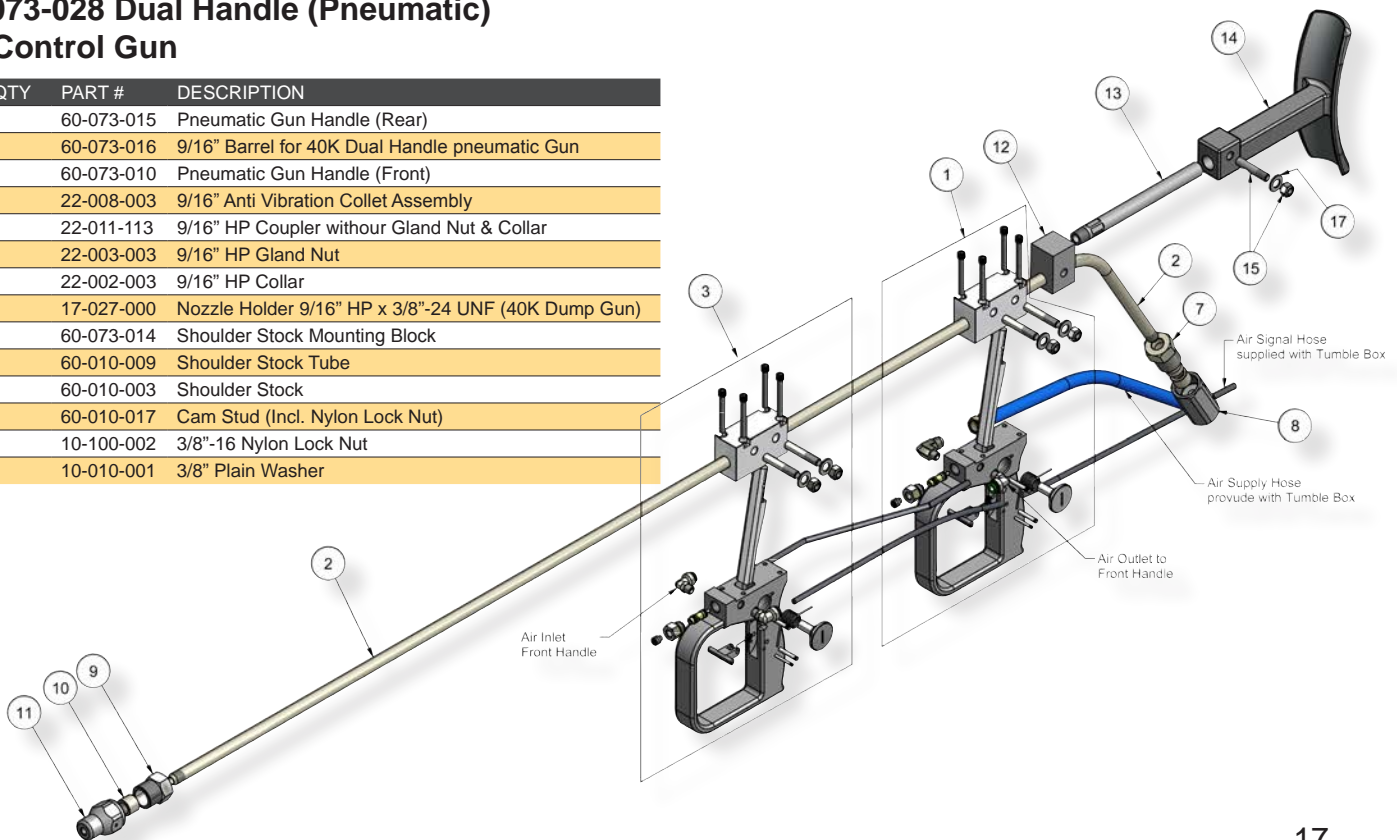
#60-073-027 Single Handle (Pneumatic) 40K Control Gun

ITEM	QTY	PART #	DESCRIPTION
1	1	60-073-014	Shoulder Stock Mounting Block
2	2	60-010-017	Shoulder Stock Cam Stud (incl. Nylon Lock nut)
3	2	10-010-001	3/8" Plain Washer SS.
4	1	60-010-003	Shoulder Stock
5	1	22-008-003	9/16" Anti Vibration Collet Assembly
6	1	22-011-113	9/16" HP 40K Coupler Without Gland Nut & Collar
7	1	60-010-009	Shoulder Stock Tube
8	1	17-027-000	Nozzle Holder 9/16" HP x 3/8"-24 UNF
9	1	22-003-003	9/16" HP Gland Nut
10	1	22-002-003	9/16" HP Collar
11	1	60-073-016	9/16" HP Air Gun Barrel 40K
12	1	60-073-015	Pneumatic Control Gun - Single/Rear Assembly
13	1	60-020-008	9/16" MP/HP QUICK ADJUST FRONT HANDLE ASSEMBLY



#60-073-028 Dual Handle (Pneumatic) 40K Control Gun

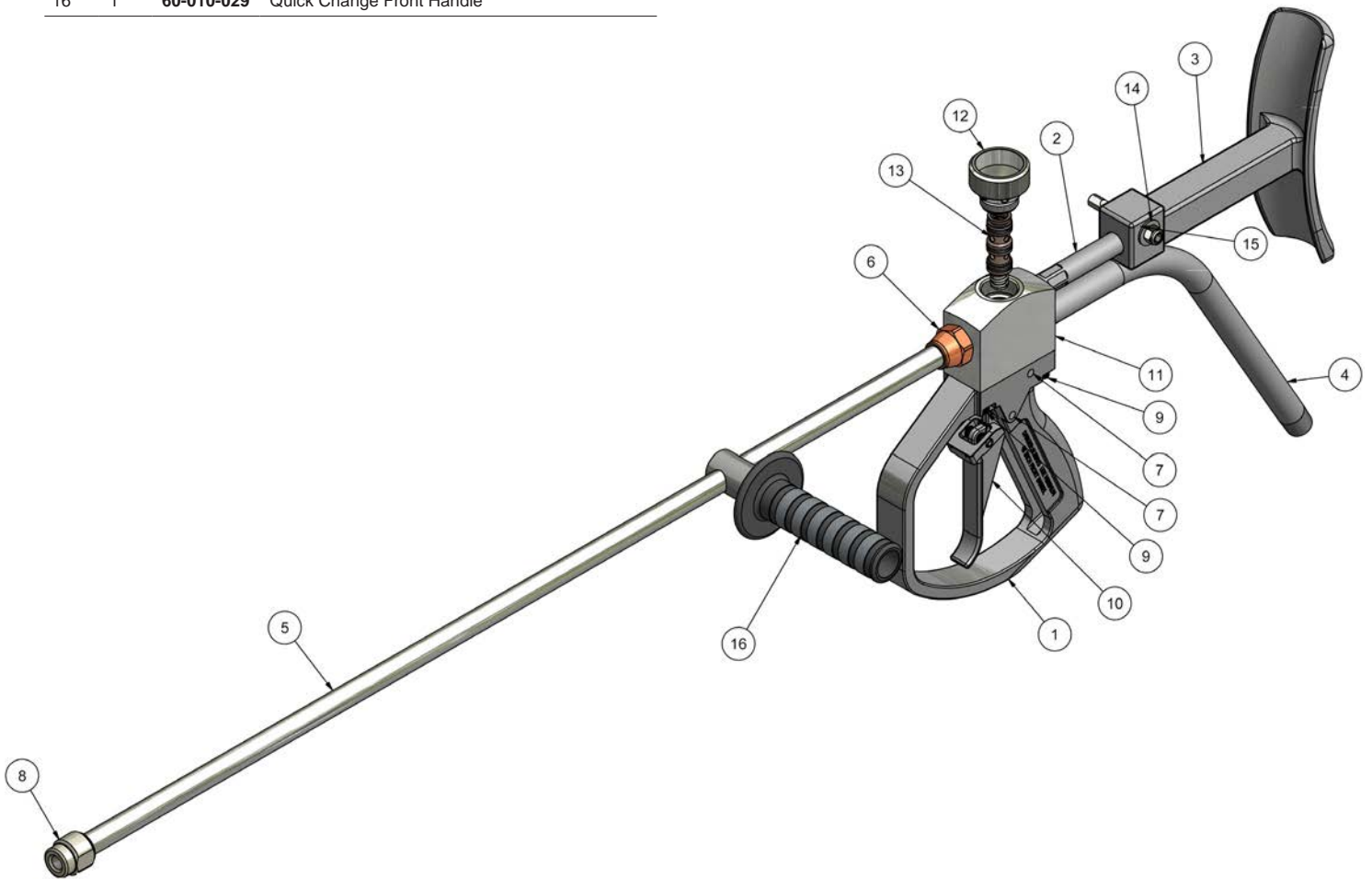
ITEM	QTY	PART #	DESCRIPTION
1	1	60-073-015	Pneumatic Gun Handle (Rear)
2	1	60-073-016	9/16" Barrel for 40K Dual Handle pneumatic Gun
3	1	60-073-010	Pneumatic Gun Handle (Front)
7	1	22-008-003	9/16" Anti Vibration Collet Assembly
8	1	22-011-113	9/16" HP Coupler without Gland Nut & Collar
9	1	22-003-003	9/16" HP Gland Nut
1	1	22-002-003	9/16" HP Collar
11	1	17-027-000	Nozzle Holder 9/16" HP x 3/8"-24 UNF (40K Dump Gun)
12	1	60-073-014	Shoulder Stock Mounting Block
13	1	60-010-009	Shoulder Stock Tube
14	1	60-010-003	Shoulder Stock
15	1	60-010-017	Cam Stud (Incl. Nylon Lock Nut)
16	1	10-100-002	3/8"-16 Nylon Lock Nut
17	1	10-010-001	3/8" Plain Washer



15K DRY SHUTOFF GUN - COMPLETE ASSEMBLY

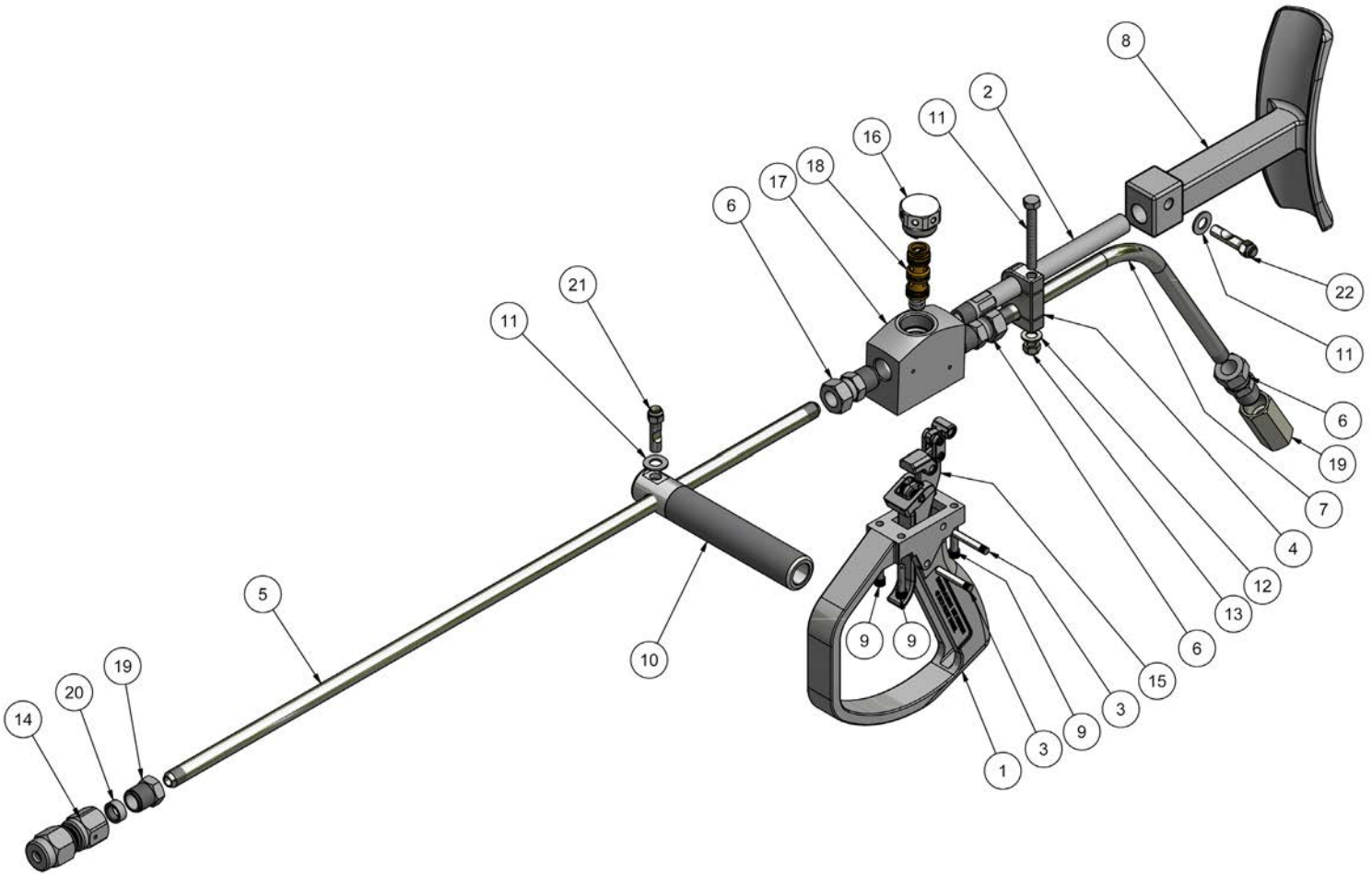
Part #60-010-305

ITEM	QTY	PART #	DESCRIPTION
1	1	60-010-001	Gun Handle
2	1	60-010-009	Shoulder Stock Tube
3	1	60-010-003	Shoulder Stock
4	1	60-010-012	Inlet Tube 15K
5	1	20-012-048	Nipple 48" long 3/8" NPT
6	1	60-010-024	Barrel Bushing - 1/2"NPT to 3/8" NPT
7	2	60-010-021	Trigger Pivot Pin
8	1	60-010-025	Nozzle Holder - 3/8"NPT x 1/4"NPT
9	4	10-001-100	1/4"-20 SHCS 1" long
10	1	60-010-061	Trigger Assembly with Linkage & Safety Latch
11	1	60-010-301	15K Dry Shutoff Gun Block
12	1	60-020-306	Cartridge Nut
13	1	60-010-304	15K Dry Shutoff Cartridge Assembly
14	1	10-010-001	3/8" SS Plain Washer
15	1	60-010-017	3/8" Barrel/Shoulder Stock Cam Stud
16	1	60-010-029	Quick Change Front Handle



20K DRY SHUTOFF GUN - COMPLETE ASSEMBLY

Part #60-020-307



ITEM	QTY	PART #	DESCRIPTION
1	1	60-010-001	Gun Handle
2	1	60-010-009	Shoulder Stock Tube
3	2	60-010-021	Trigger Pivot Pin
4	1	60-020-012	Inlet Tube Clamp
5	1	21-022-048	Nipple 48" long MP
6	3	21-005-003	Anti-Vibe collet Assy. 9/16"
7	1	60-020-007	Gun Inlet Tube 9/16" MP
8	1	60-010-003	Shoulder Stock
9	4	10-001-100	1/4"-20 SHCS 1" long
10	1	60-020-008	Front Handle 9/16" Barrel
11	1	10-017-250	Clamp Bolt 5/16"-18 x 2-1/2" long
12	1	10-010-002	5/16" Plain Washer SS
13	1	10-100-003	Nylon Lock Nut SS 5/16"-18
14	1	17-025-000	Nozzle Holder Assembly
15	1	60-010-061	Trigger Assembly with Linkage and Safety Latch
16	1	60-020-306	Cartridge Nut for 20K Dry Shutoff Gun
17	1	60-020-305	20K Dry Shutoff Gun Block
18	1	60-020-302	20K Dry Shutoff Cartridge Assembly
19	1	21-003-003	Gland Nut, 9/16" MP 20K SS
20	1	21-002-003	Collar, 9/16" MP 20K SS
21	1	60-020-009	Cam Stud Assy.- 9/16" tube for 20K & 40K handguns
22	1	60-010-017	Cam Stud - 3/8" Barrel/Shoulder Stock

YOU ARE RESPONSIBLE FOR SAFETY!

Advanced Pressure Systems publishes guides for the safe use of Water Blasting Equipment.

Please READ them!

We also strongly advise that all personnel are fully conversant with:

"Recommended Practices for the Use of Manually Operated High Pressure Water Jetting Equipment"

published by the Water Jet Technology Association.



These may be obtained free of charge by contacting:
ADVANCED PRESSURE SYSTEMS, L.P. (877) 290-4277

Conditions of Sale & Warranty

General - These terms and conditions and warranty provisions are applicable to all products contained in this catalog, and may not be varied, except in writing by a partner of APS Pressure Systems L.P.

Terms of Sale –

- 1) All sales are FOB manufacturers plant, Houston, Texas, and are priced and must be paid for in US dollars.
- 2) The purchaser agrees to hold APS Pressure Systems (DBA: Advanced Pressure Systems) harmless for any and all claims arising from the misuse or misapplication of any product manufactured or supplied by Advanced Pressure Systems.
- 3) Products returned for credit will be subject to 15% restocking charge. Only standard products will be accepted for restocking. All sales of non-standard items are final.
- 4) Payment may be made by credit cards issued by VISA or MASTERCARD. Payment by credit cards issued by AMERICAN EXPRESS will be subject to 3% service charge.

Warranty - The following classes of products carry the warranty indicated. Any component included in an assembled product which is subject to wear is not warranted. Products which have been subject to abuse including misapplication, corrosion, excessive pressure, over-tightening and galling of screw threads will not be accepted for replacement under warranty. Products not manufactured by Advanced Pressure Systems will carry the warranty by of the respective manufacturer

Hose - Not warranted. Coupling may be warranted by manufacturer.

Rigid Lances - Ninety days from date of shipment.

Plungers and Pump Packing - Not warranted.

Control Guns, Flow Divider Valves, Flow Control Valves - Ninety days from date of shipment.

Relief Valves - 180 days from date of shipment.

Nozzles and nozzle inserts / orifices - Not warranted

Fittings, Connectors and Couplings - 180 days from date of shipment.

Shipping Costs - Orders may be shipped prepaid by any regularly available means, and the cost will be paid by the customer. Other shipping costs including but not limited to: insurance for the full retail value of the products, packaging, crating and any other handling costs will be billed to the customer. If the customer collects the products from the Houston plant there will not be any shipping charges.

Payment - All invoices are due net 30 days from date of shipment. Any invoices which are more than 30 days past due will result in the account of the customer concerned to be placed on hold.



ADVANCED PRESSURE SYSTEMS
701 S. Persimmon St., Suite 85 - Tomball, TX 77375
Toll Free in North America: (877) 290-4277
Phone: (281) 290-9950 Fax: (281) 290-9952
E-mail orders: sales-team@waterblast.pro
WWW.ADVANCEDPRESSURESYSTEMS.COM
WWW.WATERBLAST.PRO